

Tuberous sclerosis complex–associated CNS abnormalities depend on hyperactivation of mTORC1 and Akt

Paola Zordan, ... , Pietro L. Poliani, Rossella Galli

J Clin Invest. 2018. <https://doi.org/10.1172/JCI96342>.

Research Article In-Press Preview Neuroscience Stem cells

Tuberous sclerosis complex (TSC) is a dominantly inherited disease, caused by hyperactivation of the mTORC1 pathway and characterized by the development of hamartomas and benign tumors, also in the brain. Among the neurological manifestations associated with TSC, the tumor progression of static subependymal nodules (SENs) into subependymal giant cell astrocytomas (SEGAs) is one of the major causes of morbidity and shortened life expectancy. To date, mouse modeling has failed in reproducing these two lesions. Here we report that simultaneous hyperactivation of mTORC1 and Akt pathways by codeletion of *Tsc1* and *Pten*, selectively in postnatal neural stem cells (pNSCs), is required for the formation of bona fide SENs and SEGAs. Notably, both lesions closely recapitulate the pathognomonic morphological and molecular features of the corresponding human abnormalities. The establishment of long-term expanding pNSC lines from mouse SENs and SEGAs made possible the identification of mTORC2 as one of the mediators conferring tumorigenic potential to SEGA pNSCs. Of note, in spite of concurrent Akt hyperactivation in mouse brain lesions, single mTOR inhibition by rapamycin was sufficient to strongly impair mouse SEGA growth. This study provides the first evidence that, concomitant with mTORC1 hyperactivation, sustained activation of Akt and mTORC2 in pNSCs is a mandatory step for the induction of SENs and SEGAs and, at the same time, makes available an unprecedented NSC-based in [...]

Find the latest version:

<https://jci.me/96342/pdf>



Submitted to Journal of Clinical Investigation

Tuberous sclerosis complex-associated CNS abnormalities depend on hyperactivation of mTORC1 and Akt

Paola Zordan¹, Manuela Cominelli², Federica Cascino¹, Elisa Tratta², Pietro L. Poliani² and Rossella Galli^{1*}

¹ Neural Stem Cell Biology Unit, Division of Regenerative Medicine, Stem Cells and Gene Therapy, San Raffaele Scientific Institute, Via Olgettina 58, Milan, Italy, 20132.

² Pathology Unit, Molecular and Translational Medicine Dept., University of Brescia, Brescia, Italy, 25124

* Corresponding author:

Rossella Galli, PhD
Neural Stem Cell Biology Unit, Division of Neuroscience,
San Raffaele Scientific Institute, Via Olgettina 58, 20132 Milan, Italy
Phone: +39 02 2643 4626/Fax: +39 02 2643 4621

E-mail: galli.rossella@hsr.it

The authors have declared that no conflict of interest exists.

Abstract

Tuberous sclerosis complex (TSC) is a dominantly inherited disease, caused by hyperactivation of the mTORC1 pathway and characterized by the development of hamartomas and benign tumors, also in the brain. Among the neurological manifestations associated with TSC, the tumor progression of static subependymal nodules (SENs) into subependymal giant cell astrocytomas (SEGAs) is one of the major causes of morbidity and shortened life expectancy. To date, mouse modeling has failed in reproducing these two lesions. Here we report that simultaneous hyperactivation of mTORC1 and Akt pathways by co-deletion of *Tsc1* and *Pten*, selectively in postnatal neural stem cells (pNSCs), is required for the formation of *bona fide* SENs and SEGAs. Notably, both lesions closely recapitulate the pathognomonic morphological and molecular features of the corresponding human abnormalities. The establishment of long-term expanding pNSC lines from mouse SENs and SEGAs made possible the identification of mTORC2 as one of the mediators conferring tumorigenic potential to SEGA pNSCs. Of note, in spite of concurrent Akt hyperactivation in mouse brain lesions, single mTOR inhibition by rapamycin was sufficient to strongly impair mouse SEGA growth. This study provides the first evidence that, concomitant with mTORC1 hyperactivation, sustained activation of Akt and mTORC2 in pNSCs is a mandatory step for the induction of SENs and SEGAs and, at the same time, makes available an unprecedented NSC-based *in vivo/in vitro* model to be exploited for identifying actionable targets in TSC.

Introduction

Tuberous Sclerosis Complex (TSC) is a multisystem autosomal dominant disorder, resulting from mutations either in *TSC1* or in *TSC2* genes that lead to mTORC1 pathway hyperactivation (1). TSC is characterized by benign hamartomas and tumors in multiple body organs. The manifestations in the central nervous system (CNS), *i.e.* cortical tubers (CTs), subependymal nodules (SENs) and subependymal giant cell astrocytomas (SEGAs), are the leading cause of morbidity and mortality (1-4).

SENs are asymptomatic periventricular nodular lesions, which may evolve postnatally and throughout early adulthood into benign tumors, known as SEGAs. The latter lesions grow within the ventricles, leading to hydrocephalus, increased intracranial pressure, and even death (1).

Both types of lesions comprise aberrantly differentiated cells, which are often giant and dysplastic. The abnormal cells found in TSC brain lesions express the same markers detected in progenitors within the ventricular/subventricular zone (VZ/SVZ), thus implying that the brain-associated TSC manifestations may arise pathogenically from a stem/progenitor cell undergoing abnormal differentiation. As such, others and we previously set out to ablate either *Tsc1* or *Tsc2* in neural stem cells (NSCs) (5-9). NSC-targeted conditional conventional mouse models were very proficient in developing defects in cortical lamination as well as SVZ abnormalities that resembled SENs, as reviewed in (10). Likewise, conditional inducible mice, targeting *Tsc1* deletion to Nestin-positive pNSCs, induced focal aberrations, reminiscent of SENs, as well as heterotopias (7, 11). However, well defined, cell heterogeneous SENs and, most importantly, full-blown SEGAs were never detected in any mouse model.

Therefore, we reasoned that, in addition to the inactivation of *Tsc1* or *Tsc2* genes, other molecular events might be required to induce discrete TSC lesions in genetically modified animals. A classical activator of mTOR is Akt, a downstream effector of PI3K. Notably, increased AKT phosphorylation has been described in human SENs and SEGAs with respect to control brain (12, 13).

As such, to enhance Akt activation, we took advantage of a strategy relying on the inactivation of *Pten*, *i.e.* the major negative regulator of PI3K activation, which promotes cell proliferation and growth (14). In line with this hypothesis, *Pten* deletion in Nestin-expressing pNSCs resulted in the formation of an aberrantly expanded SVZ (15), which reminded of the periventricular SEN-like lesions observed upon *Tsc1* deletion in embryonic NSC-targeted mouse models (6, 9).

Thus, we exploited inducible conditional transgenesis to delete not only *Tsc1* but also *Pten* in distinct subset of pNSCs, thus leading to hyperactivation of both mTOR and Akt. We generated *Tsc1^{c/c}Pten^{c/c}/Nestin-CreER^{T2}* (TPN) mice that, following gene deletion at different time points, harbored brain lesions that, for the very first time, closely resembled human SENs and SEGAs, in terms of histology, cellular composition and molecular pattern. From these lesions, we successfully isolated long-term expanding pNSCs, which were endowed with a distinctive cellular and molecular phenotype. Notably, SEGA-derived pNSCs were also capable to give rise to SEGA-like lesions upon transplantation, thus indicating that these pNSCs may represent a valuable preclinical model of TSC brain abnormalities.

Results

Early post-natal targeted inactivation of *Tsc1* and *Pten* in subventricular zone (SVZ) postnatal (p) neural stem cells (NSCs) induces the formation of periventricular focal nodular lesions.

Patients' subependymal nodules (SENs) and subependymal giant cell astrocytomas (SEGAs) arise in SVZ, which surrounds the lateral ventricles and comprise NSCs that persist postnatally (16). To test whether *Tsc1* and *Pten* loss-of-function in this compartment might lead to the development of the periventricular lesions typical of TSC, we interbred *Nestin-CreER^{T2}* mice (17), in which the *CreER^{T2}* transgene is expressed in Nestin-positive SVZ NSCs, with compound *Tsc1^{c/c}Pten^{c/c}* mice. After single or double Tamoxifen (TMX) administration at early postnatal stages (*i.e.* P10 and P10-11), we obtained *Tsc1^{c/c}Pten^{c/c}/Nestin-CreER^{T2+}* (*TPN*) mutant mice ($n=21$), which were indistinguishable from their *Tsc1^{c/c}Pten^{c/c}* control littermates up to 4 days after TMX activation. From this time point, mutant mice showed a decrease in size (Supplemental Figure 1A) and displayed humped posture, dorsiflexion of the tail and posterior limb-clasping behavior. They also showed a progressive decline in activity, hampered gait with limited mobility and were easily identifiable from controls for the presence of disheveled fur and epithelial hamartomas. The brain of mutant mice was larger than controls (Supplemental Figure 1A). Mutant mice eventually died 37-45 days after birth (Supplemental Figure 1B), likely as a consequence of cerebellar defects due to *Tsc1/Pten* inactivation in Nestin-expressing progenitor cells found in the early postnatal cerebellum (Supplemental Figure 1A) (18).

Firstly, we traced the fate of mutant pNSCs by interbreeding *TPN* mice with *tdT* reporter mice (*TPN-tdT* mice) (Supplemental Figure 1C). Forty-eight hours after TMX administration, *tdT^{pos}* cells were found all along the SVZ (Supplemental Figure 1C). Most of these cells were immunoreactive (IR) for Nestin and were interposed among *tdT*-positive S100 β -IR ependymal cells (Supplemental Figure 1D). Some of the *tdT*-IR cells were positive for GFAP, one of the markers of *bona fide* SVZ NSCs (Supplemental Figure 1E).

Interestingly, 27-32 days after TMX administration both *TPN* and *TPN-tdT* mice showed the presence of multiple alterations distributed along the SVZ bilaterally (Figure 1A and Supplemental Figure 2A). Such abnormalities, which were *tdT*-positive (Supplemental Figure 2A), included an aberrant expansion of the upper SVZ as well as several circumscribed nodules, protruding in the lateral ventricles that were also significantly enlarged. Ectopic bulb-like ventral structures, located in the proximity of the interventricular foramen and similar to those described in single *Tsc1^{c/c}/Nestin-*

CreER^{T2+} mice (7) (11) and *Pten^{c/c}/Nestin-CreER^{T2+}* mice (15), were also found (Supplemental Figure 2A). Most of the tdT-positive cells within all nodules hyperactivated mTORC1, as shown by pS6 staining, and were GFAP-IR (Supplemental Figure 2B and 2C).

Hematoxylin and eosin (H&E) indicated that the lesions retrieved along the ventricular walls of mutant mice, including those located ventrally, were made up by small cells dispersed within a gliofibrillary matrix, with only few large cells observed (Figure 1A). Most cells in the lesions were pS6-IR. Interestingly, GFAP expression was retrieved in the reactive astrocytes contributing to the gliofibrillary matrix as well as in the pS6-IR small cells within the lesions (Figure 1A and Supplemental Figure 2C). The nodules comprised also ectopic NeuN-IR mature neuronal cells that were pS6-IR as well as a high frequency of DCX-IR neuroblasts. Co-labeling of neuronal and glial markers (*i.e.* DCX and GFAP) was never retrieved in the same cell.

As opposed to the ventrally located nodules described in the single *Tsc1* mutant mouse model (7), both dorsal and ventral lesions in P10 *TPN* mice comprised cells that expressed stem cell markers such as Pax6, and, to a lower extent, Sox2, suggesting that a fraction of cells within these lesions retained an immature phenotype (Figure 1B). Accordingly, most cells expressed the early neuronal marker Tuj1, while being negative for the mature oligodendroglial marker MBP (Figure 1B).

S100 β expression was present in the ependymal layer that lined the ventricles but not in the nodules, which comprised activated inflammatory Iba1-IR cells and few Vimentin-positive reactive astrocytes (Figure 1C). Notably, the proliferation index of the lesions by Ki67 was negligible, further underlining their benign and static nature (Figure 1C).

To be noted, all lesions did show increased pAkt_{T308} activation, as expected by the relief of the negative feedback after *Pten* loss (Figure 2A). Only modest activation of pErk was retrieved in the nodules, which was mostly restricted to cells within the SVZ (Figure 2A and Supplemental Figure 2D). Activation of mTORC2, as measured by pNdr γ 1, was never observed (Figure 2A).

To assess whether treatment with mTORi could revert the mutant phenotype in terms of overall survival, behavior and development of periventricular lesions, we administered rapamycin intraperitoneally to P10 *TPN* mice ($n=8$) every 48h from P19, when some of the SVZ alterations were already detectable (Supplemental Figure 2E), up to P75. All mutant mice treated by this regimen increased in size and were alive and healthy at the latest time points assessed (*i.e.* two times the lifespan of vehicle treated-mutant mice), whereas all vehicle-treated mutant mice died at the expected

time points. Accordingly, mTORi-treated mutant mice did not show any clear periventricular alteration and their brain cyto-architecture was identical to that of controls, also in terms of signaling pathway activation (Figure 2B).

All together, these findings suggest that the intraventricular lesions forming after deletion of both *Tsc1* and *Pten* in NSCs at P10 might resemble the benign and static SEN-like lesions found in TSC patients.

The nodular lesions developing in early postnatally activated *TPN* mice closely resemble the corresponding human SENs.

To assess whether the lesions in *TPN* mice activated early postnatally were reminiscent of the human counterpart, we performed an unprecedented immunohistochemistry (IHC)-based comparative analysis with human TSC patients' specimens (Figure 3 and Table 1). Remarkably, many morphological and molecular features, displayed by the lesions developing in *TPN* mice activated at P10 or P10-11 (not shown), were the same observed in human SENs (post-mortem specimens, $n=3$).

Indeed, human SENs comprised many small cells interspersed within a gliofibrillary matrix with only very few large and multinucleated cells retrieved (Figure 3A). Many cells within the human lesions showed hyperactivation of pS6 and, unexpectedly, pAKT_{T308}, suggesting that the mTORC1-dependent negative feedback might not be in place in human SENs (Figure 3B). Some small cells within human SENs expressed GFAP that was more abundant in cells of the gliofibrillary matrix; few cells were positive for NeuN (Figure 3C). Small cells were also positive for the stem cell markers PAX6 and SOX2. Many cells expressed the early neuronal marker Tuj1. Similar to GFAP expression, Vimentin was mostly retrieved in reactive glial cells, with only rare few small non-glial cells being positive (Figure 3D). Some Iba1-IR microglial cells were found, whereas S100 β -IR cells were never retrieved (not shown). Most interestingly, only occasional cells in human SENs did activate pERK, as previously reported (13) (Figure 3D). Activation of pNDRG1 was never detected (not shown).

Thus, the aberrant structures developing in early-activated *TPN* mice are endowed with the very same traits retrieved in human SENs and do qualify as SENs.

Late post-natal targeted inactivation of *Tsc1* and *Pten* in SVZ pNSCs promotes the development of expansive intraventricular lesions.

To test whether late activation of *Tsc1/Pten* deletion in SVZ pNSCs might allow the formation of lesions displaying features of SEGAs, we administered TMX to *TPN* mice in two distinct time windows, *i.e.* P15-17 ($n=10$) and P24-26 ($n=7$). *TPN* mice treated at P15-17 showed only minor defects in body growth, while displaying a highly enlarged brain (Supplemental Figure 3A). Conversely, P24-26 treated mice did not show any macroscopic pathological phenotype (not shown). Accordingly, *TPN* mice treated at P15-17 mice survived for up to 90 days, with the majority of mutant mice dying around 60 days (Supplemental Figure 3B), due to a general deterioration of the clinical conditions that reminded those observed in P10 *TPN* mice and was again likely dependent on the onset of cerebellar defects (Supplemental Figure 3A). *TPN* mice activated at very late time points, when cerebellar neurogenesis is over, were still alive and in good health 175 days after birth (Supplemental Figure 3B).

Lineage tracing in P15-17 *TPN-tdT* mice 48h after TMX activation indicated that many tdT^{pos} cells were retrieved in the SVZ, whereas in P24-26 *TPN* mice they were reduced in number (Supplemental Figure 3C-E). In both types of mice, tdT^{pos} cells were Nestin- and GFAP-IR and were still located among $tdT^{pos}/S100\beta$ -IR ependymal cells (Supplemental Figure 3D-E).

When analyzed 80 days after birth, P15-17 *TPN* and *TPN-tdT* mice developed bilateral bulgy structures (Figure 4A and Supplemental Figure 4A), located in the upper portion of the ventricles and gradually erupting ventrally when moving antero-posteriorly (Supplemental Figure 4A), with pS6- (Supplemental Figure 4B) and GFAP-IR (Supplemental Figure 4C) tdT^{pos} cells found all throughout the lesions.

By H&E, P15-17 *TPN* lesions, which presented as well-demarcated intraventricular masses and did not invade the periventricular parenchyma, comprised two main morphologically distinct cell populations, *i.e.* some small astrocyte-like cellular elements and many pS6-IR SEGAtypical giant cells, containing nuclei showing fine granular chromatin, distinct nucleoli and glassy cytoplasm (Figure 4A). Both cell types were comprised within a gliofibrillary matrix, which was predominantly composed by GFAP-IR reactive glial cells, with very few clusters of GFAP-IR cells being also pS6-IR (Figure 4A). This was at odd with SENs, in which many GFAP-IR cells in the nodular lesion were also pS6-IR. Only scant cells expressing the mature neuronal marker NeuN were present in P15-17 *TPN* lesions, with few of them being pS6-IR (Figure 4A). DCX-IR cells, which did not co-label with GFAP, were also detected and, as opposed to pS6-IR cells, were mostly small in size and restricted to the lesion

boundary (Figure 4A). To be noted, their frequency and staining intensity in the lesions was lower than in mouse SENs.

The expression of the stem cell markers Pax6, Sox2 and Tuj1 was found at the same frequency observed in SENs, with Pax6 staining in P15-17 *TPN* lesions being restricted to giant cells (Figure 4B). As opposed to SENs, several MBP-IR cells were scattered throughout P15-17 *TPN* lesions (Figure 4B).

Interestingly, the S100 β -IR ependymal layer in P15-17 *TPN* lesions was intact, as in human SEGAs, in which ependymal integrity is known to limit the dissemination of tumor cells in the liquor. In contrast with SENs, many S100 β -IR cells that were not ependymal were also found in the lesions (Figure 4C). Iba1-IR activated microglial cells as well as Vimentin-IR reactive glial cells were detected at higher frequency in these lesions than in SENs, suggesting the activation of a general inflammatory response (Figure 4C). As in SENs, low mitotic activity was observed (Figure 4C).

As in SENs, pAkt_{T308} hyperactivation was again observed, in particular in the SEGA-typical large cells (Figure 5A). Most notably, a significantly higher phosphorylation of Erk (Figure 5A and Supplemental Figure 4D) and Ndr β 1 (Figure 5A), mainly confined to small cells, was retrieved in these lesions than in SENs.

The same bulb-like ventral abnormalities observed in P10 *TPN* mice were retrieved also in P15-17 *TPN* mice (Figure 5B), but in this case they did acquire very clear features of SEGA, *e.g.* the presence of giant cells and the activation of pErk and pNdr β 1, as opposed to SEN-like lesions previously detected in single *Tsc1* mutant mice (7) (not shown).

As done for SEN-bearing mice, we subjected *TPN* mice activated at P15-17 ($n=8$) to rapamycin treatment from P24 to P185 and, again, observed full recovery of mutant mice and absence of any periventricular lesion (Figure 5B).

Most remarkably, very late TMX activation of *tdT-TPN* and *TPN* mice at P24-26 induced the formation of focal and discrete SEGA-like lesions (Supplemental Figure 4E-F) that were characterized by a strong enhancement of the SEGA phenotype. Indeed, in addition to the two populations of small and giant cells observed in P15-17 *TPN* lesions, a third cell population made up by spindle-shaped fascicular cells was also detected (Supplemental Figure 4F). Hyperactivation of pErk and pNdr β 1 was observed not only in the small cell component, but also in large cells (Supplemental Figure 4F). Immunofluorescence (IF) on *tdT-TPN* mice activated at P24-26 confirmed the same pattern retrieved

by IHC for pS6 and pERK and highlighted the presence of few tdT-positive cells being GFAP (Supplemental Figure 4G).

Overall, the lesions forming in P15-17 and P24-26 *TPN* mice showed benign tumor-like features, such as enlarged cellular mass, reduced cell differentiation, enhanced growth pathway activation and increased inflammation, thus potentially qualifying as SEGAs.

The abnormal structures developing in late postnatally activated *TPN* mice display the same pathognomonic features of human SEGAs.

To confirm the SEGA nature of the above-described lesions, we compared them with human specimens by IHC and found that the mouse lesions developing in *TPN* mice activated at P15-17 and P24-26 (Figure 4, 5 and Supplemental Figure 4) did share many morphological features and marker expression with patients' SEGAs (Figure 6 and Table 1). These specimens, all obtained after surgical resection ($n=15$; Supplemental Table 1), were heterogeneous in terms of cell composition. The common morphological trait among different patients' samples was the abundant gliofibrillary matrix, again made up mostly by reactive astrocytes (Figure 6A), in which distinct cell populations were intermixed, although in variable proportions in different patient's samples. Three main cell types were reported: *a*) cells with ganglionic, balloon-like morphology, very large soma, peripheral nucleus and eosinophilic glassy cytoplasm, in some cases also bi- or multi-nucleated (Figure 6B), *b*) small cells with glial appearance (Figure 6B), and *c*) small/normal-sized cells with a central nucleus, spindle morphology and long processes intersecting as fascicles (Figure 6C). To be noted, both human and mouse lesions did comprise several multinucleated cells (Figure 6B).

All human SEGA samples hyperactivated pS6 and, very interestingly, pAKT_{T308}, again underlying the unexpected lack of activation of the negative feedback loop in patients' tumors (Figure 7A). GFAP expression was found mostly in reactive astrocytes and rarely in cells with giant morphology, whereas DCX was expressed only in few clusters of cells (Figure 7A). Human SEGAs expressed SOX2 and PAX6 as well as Tuj1 at very high level in the majority of cells (Figure 7B). NeuN expression was never detected (not shown). Interestingly, S100 β and Vimentin expression was retrieved not only in small reactive astrocytes but also in giant and spindle-shaped cells (Figure 7C). The inflammatory response in human SEGAs was very high, as indicated by the frequency of Iba-1-IR activated

microglia (Figure 7C). Most significantly, the majority of human SEGAs hyperactivated pNDRG1 and pERK (Figure 7D).

As such, the lesions forming after deletion of both *Tsc1* and *Pten* in NSCs at late postnatal stages faithfully reproduced the SEGAs developing in TSC patients.

Postnatal NSCs isolated from SENs and SEGAs developing in *TPN* mice retain molecular and cellular features of their lesion of origin.

To determine whether *TPN*-derived abnormalities did comprise NSCs, we subjected distinct mouse SENs and SEGAs to the NeuroSphere Assay (NSA) (6, 9). We successfully established long term expanding pNSC lines from both types of mutant lesions ($n=6$ from SENs and $n=4$ from SEGAs); these pNSC lines underwent efficient ablation of *Tsc1* and *Pten*, as shown by genomic DNA PCR analysis (Supplemental Figure 5A).

Under proliferative culture conditions, SEN and SEGA pNSCs were more adhesive than controls, with SEGA pNSCs being multinucleated and showing a highly aberrant morphology (Figure 8A).

To test whether mTORC1 hyperactivation in pNSCs affected their multi-lineage differentiation potential, we analyzed them before and after differentiation by IF (Figure 8B). As expected, pS6 was more highly phosphorylated in SEN and SEGA pNSCs than in controls, even when triggered to terminal differentiation (Figure 8B and Supplemental Table 2). Similarly, whereas control and mutant pNSCs did express the undifferentiated progenitor marker Nestin when proliferating, only mutant pNSCs continued to express Nestin upon differentiation, suggesting that mutant pNSCs remained immature (Figure 8B). Accordingly, while control pNSCs properly matured into Tuj1-IR neurons, GFAP-IR astrocytes and GalC-IR oligodendrocytes, mutant pNSC-derived progeny contained many aberrant GFAP-IR cells and few Tuj1-IR, which were often abnormally colabeled with GFAP (Figure 8B and Supplemental Table 3), with no GalC-IR oligodendrocytes detected (Figure 8B).

When analyzed in comparison with their matched controls for the activation of selected molecular pathways by WB (Figure 8C), both SEN and SEGA pNSCs showed lack of *Tsc1* and *Pten*, as well as downregulation of *Tsc2*. In line with *in vivo* results, hyperactivation of pS6 and of its upstream activator pS6K was found in mutant pNSCs. Hyperphosphorylation of pAkt_{T308} was retrieved in mutant pNSCs as compared to controls, confirming that the negative feedback active on Akt was relieved upon *Pten* deletion. Similarly, higher phosphorylation of the mTORC2 regulatory subunit mSin1_{T86} as well

of mTORC2 downstream effectors such as pAkt_{S473} and pNdrG1 was observed in mutant than in control pNSCs, indicating increased signaling through mTORC2. The Akt downstream target pGsk3 β was also hyperphosphorylated in mutant pNSCs.

Interestingly, when we compared the activation level of the different signaling pathways in SEN vs. SEGA pNSCs, we found that pNdrG1, pErk and pGsk3 β were more highly hyperactivated in SEGA than in SEN pNSCs (Figure 8C), thus proposing them as potential SEGA-specific markers.

Quantitative analysis by WB indicated that, even upon differentiation, pAkt (Figure 9A and Supplemental Table 2) remained hyperactivated in both SEN and SEGA pNSC-derived progeny, with pNdrG1 and pErk being also more highly phosphorylated in SEGA than in SEN progeny (Figure 9A-B and Supplemental Table 2). Overall, these data suggest that the persistent activation of these pathways was likely involved in the impaired differentiation of mutant pNSCs.

Of note, exposure of mutant pNSCs to 100 nM rapamycin under proliferating conditions (48 hours) and during differentiation strongly inhibited pS6 hyperphosphorylation, reduced aberrant Nestin expression and decreased pErk and pNdrG1 activation (Supplemental Figure 5C and Supplemental Table 4), while only occasionally restoring proper differentiation into astrocytes and oligodendrocytes (Supplemental Figure 5C).

Thus, mTORC1 and Akt hyperactivation in SEN and SEGA pNSCs impairs their multipotency and differentiation potential by promoting the differential hyperactivation of growth signaling pathways. In particular, mTORC2 and pErk were significantly hyperactivated in SEGA pNSCs, as observed in the corresponding lesions in vivo.

The ability of SEGA pNSCs to give rise to tumors upon transplantation is sustained by mTORC2 activation.

Next, we asked whether SEN and SEGA pNSCs could give rise to the original parental lesion once implanted in vivo. Sixty days after subcutaneous injection into nude mice, whereas SEN pNSCs ($n=5$ cell lines tested) failed in generating any kind of lesion, SEGA pNSC lines ($n=3$ cell lines tested) induced the formation of tumors ($n=4$ for each line) that histologically resembled both mouse and human SEGAs (Figure 10A and Table 1). Tumors from distinct SEGA pNSC lines were morphologically very different (Figure 10A), as described for human SEGAs from distinct patients. Tumors derived from *TPN* pNSC line L3 showed large regions made up by spindle-shaped cells with

processes running in intersecting fascicles, as in the SEGA of patient #3 (Figure 10A). Differently, tumors from *TPN* pNSC line L90 comprised many areas containing giant and pleomorphic cells, which were often multinucleated, interspersed within a lower number of spindle-shaped cells, as retrieved in the patients' samples #5 and #6 (Figure 10A). Lastly, tumors from line L1 contained both large and spindle-shaped cells in similar proportions, as in patients #10 and #13. All types of subcutaneous lesions activated pS6, pAkt, pErk, and pNdrG1 (Figure 10B and Supplemental Figure 6) and expressed several SEGA-specific markers (Supplemental Figure 6), thus implying that pNSCs did preserve their SEGA-like features even in vivo.

To corroborate these findings from a molecular standpoint, we subjected subcutaneous SEGAs to transcriptional profiling by RNA sequencing (RNA-seq). Interestingly, many genes that were upregulated in pNSC-derived mouse SEGAs vs. control pNSCs (with Log2 FC ranging from 5 to 8) (Figure 10C) were highly expressed also in the corresponding human TSC lesions, *e.g.* *Gpmnb* (6, 19, 20), *Mpeg1* (20), *Ltf* and *Sln* (19) (Supplemental List 1 and Supplemental Figure 7). Notably, the expression of *Gpmnb*, one of the 10 top ranking upregulated genes in mouse SEGAs (Figure 10C), was confirmed as being overexpressed more than 200 times in mouse SEGAs over control pNSCs by quantitative (q) polymerase chain reaction (PCR) analysis (Figure 10C).

Then, we formally assessed whether the gene signatures qualifying mouse SEGAs correlated with the gene expression profiles of human SEGAs (20) by Gene Set Enrichment Analysis (GSEA). To this end, we selected all the genes expressed in mouse SEGAs as compared to control pNSCs and queried this list with the genes that were upregulated in the comparison between 13 human SEGA samples and control brain tissues (20). Remarkably, almost all genes overexpressed in human SEGAs positively correlated with those upregulated in mouse SEGAs (Fig. 10D and Supplementary List 2).

Next, to further test the degree of molecular commonality between mouse and human brain lesions, we exploited mutational data derived from human SEN/SEGA specimens (20) and assessed whether somatic mutations could be retrieved in the human *PTEN* locus or in protein known to interact with *PTEN* (21). Notably, no mutations were retrieved either in *PTEN* or in members of its interactome (data not shown). However, in line with the hyperactivation of AKT in human SENs and SEGAs that we described above, AKT-related pathways and their associated genes were significantly enriched within the transcripts upregulated in human SEGAs by EnrichR-based analysis (Supplementary Table 5).

To pinpoint the mechanism(s) responsible for the evolution of SENs into SEGAs, as recapitulated *ex-vivo* by the exclusive tumorigenic ability of SEGA-derived pNSCs, we interfered with the expression of one of the pathways that were hyperactive in SEGA *vs* SEN lesions as well as in SEGA *vs* SEN pNSCs, *i.e.* mTORC2. To this end, we silenced *Rictor*, the mTORC2-specific subunit, in *TPN* SEGA pNSC line L1 by RNAi. Significant knockdown of *Rictor* and reduced activation of the mTORC2 subunit pmSin1_{T86} as well as of the mTORC2 downstream effectors pNdr_{g1} and pAkt_{S473} were achieved by means of lentiviral shRNAs (Figure 11A). Remarkably, shRNA *Rictor*-transduced pNSCs gave rise to tumors that were significantly reduced in size as compared to empty vector-infected lesions (Figure 11B). Accordingly, *Rictor*-silenced tumors retained a significant decrease in mTORC2 activation (Figure 11C) and displayed a strong reduction in SEGA-like features, as large and giant cells were not found (Figure 11D).

Single mTOR inhibition is a more effective strategy than dual PI3K-mTOR blockade in hampering mouse SEGA growth.

To assess whether single mTOR or dual PI3K-mTOR inhibition could elicit distinct responses on SEGA growth by differentially inhibiting Pten loss-induced Akt activation, SEGA pNSCs were implanted subcutaneously into nude mice and, when tumor volume reached 10-20 mm³ 42 days after transplant, animals were randomized and treated for 5 days a week with either rapamycin (6 mg/kg) or with the dual PI3K-mTOR inhibitor PI-103 (5 mg/kg) (22) up to 4 weeks. Mice treated with either drug did not show any sign of toxicity based on body weight, food/water intake, and activity. Overall, both rapamycin and PI-103 showed inhibitory activity up 63 days after transplant *in vivo* (Figure 12A). However, a significant and persistent reduction in average tumor size by more than 5-fold was observed at 71 days only in mice treated with rapamycin as compared with those treated with vehicle and PI-103 (Figure 12B). In line with these findings, whereas both vehicle- and PI-103-treated tumors comprised atypical cells with large eosinophilic cytoplasm and spindle-shaped cells with hyperchromatic elongated nuclei and numerous mitotic figures and necrotic foci, rapamycin-treated tumors were characterized by low cellularity and by cells with large eosinophilic cytoplasm and round or oval nuclei with one or more prominent nucleoli (Figure 12C). Spindle-shaped cells were scarcely represented, mitotic figures were sporadic and no necrotic foci were found (Figure 12C). Accordingly, tumors treated with rapamycin showed a much higher extent of pS6, pAkt_{T308/S473} and pNdr_{g1}

inhibition than those treated with the dual inhibitor (Figure 12C). As opposed to rapamycin, PI-103 didn't effectively inhibited mTORC2, as shown by persistent pAkt_{S473} and pNdrG1 hyperactivation (Figure 12C), thus supporting the main role of mTORC2 activation in promoting SEGA development and growth and the requirement for its inhibition to achieve significant SEGA reduction (Figure 11A-D).

Discussion

Although the lesions developing in the brain of several TSC mouse models showed some degree of similarity to those retrieved in patients, none of these mutants did give rise to well-defined SENs and full-blown SEGAs (10). The latter lesions are thought to evolve from SENs and are a frequent cause of morbidity in TSC patients, having also a significant impact on patients' quality of life. As such, the generation of *in vivo* preclinical models reproducing these two disease manifestations is strongly needed.

To this end, we exploited a combined deletion strategy, by which we ablated in pNSCs not only the TSC disease gene *Tsc1*, as previously performed by different groups (10), but also the tumor suppressor *Pten*. By this approach, we impaired the *Pten* restraining function on the PI3K-Akt cascade, thus relieving the S6K1-dependent inhibitory feedback loop impinging on Akt. As such, we achieved the sustained hyperactivation of mTORC1 and, at the same time, of Akt in pNSCs. Interestingly, activating mutations in different components of the PI3K-Akt axis, such as PIK3CA, PI3KR and AKT3, have been associated with a variety of developmental brain disorders (4). Accordingly, AKT hyperactivation through *PTEN* loss have been recently shown to promote cell cycle re-entry and to delay neuronal differentiation in human neural progenitors (23). Most significantly, and quite unexpectedly, AKT hyperactivation has been previously reported in both human SENs and SEGAs (12, 13).

We set out to exploit the same gene inactivation strategy described in seminal prior publications (7, 11, 15), *i.e.* deleting the genes of interest in pNSCs, thus endowing mice with a longer survival than through embryonic targeting. At the same time, this strategy allows to deliver gene deletion to a small number of cells, thus ideally achieving the generation of focal abnormalities.

To be noted, the lesions induced by TMX activation at relatively close-in-time postnatal stages were very different phenotypically and molecularly. One possible reason for this might lie in the different nature of the cells targeted by gene deletion at each stage. We selected different time windows of Nestin-driven *Cre* recombination, which included distinct stages of development of the postnatal SVZ, characterized by different features and involving several types of progenitors (24). Radial glia is the prevalent glial cell population in the perinatal and early postnatal stages and expresses Nestin (24). At P10, Nestin-positive radial glia undergoes changes in shape and orientation, to eventually transform

into adult SVZ astrocytes, whereas at P15 Nestin-positive radial glial cells start to decrease in number and GFAP-IR glial cells appear, although not yet organized as glial tubes. At P24, Nestin-expressing cells are very few and glial cells consistently aggregated to form a glial meshwork homogeneously distributed in the whole SVZ area. As such, the different phenotypes of the lesions developing at different stages might be explained by different types of pNSCs being targeted and by a different SVZ niche composition.

Another explanation that might account for the variegated features of the lesions developing at distinct phases of postnatal development is the different lifespan of mutant mice. Although *TPN* mice activated at P10 and P15-17 live longer than other conditional models, they still show limited survival that we associated with the onset of cerebellar neurological signs (*e.g.* ataxic traits and motor deficits). Indeed, Nestin expression in cerebellar NSCs persists up to four postnatal weeks (25). As such, gene inactivation may take place in cerebellar pNSCs thus markedly impacting on proper cerebellar neurogenesis. Accordingly, cerebellar alterations were evident in mutant mice activated at P10, while becoming less severe in *TPN* mice activated at P15-17 and disappearing in mutant mice activated at P24-26, when Nestin expression is almost negligible (Paola Zordan and Rossella Galli, unpublished observations). The survival of the mutant mice increased accordingly. Thus, it is plausible that the extended lifespan of mutant mice activated at P15-17 might allow the development of lesions that had the time to acquire SEGA-like features. Likewise, the normal lifespan of mutant mice activated at P24-26 may promote the ‘maturation’ of early stage SEGA-like lesions, as those observed in mice activated at P15-17, into late stage SEGA lesions with a more variegated and complex phenotype.

To be noted, although the TSC neurological manifestations in patients arise during fetal developmental, postnatal targeting in mouse models is effective in promoting tissue alterations that closely reproduce the human lesions, thus making burdensome gene targeting at embryonic stages unnecessary.

Postnatal periventricular lesions have been previously described in conditional inducible mice in which *Tsc1* only was ablated in Nestin-expressing pNSCs (7). Those lesions, developing along the SVZ and in the intraventricular foramen, have been identified as showing both SEN and SEGA features. However, while clearly reproducing SENs, those lesions did not recapitulate SEGAs, as they did not contain either giant or multinucleated cells, did not show expansive growth and did not present

evident sign of pathological inflammation, which, on the contrary, were all retrieved in the tissue abnormalities developing in late postnatally activated *TPN* mice.

Most relevantly and for the very first time, the structural abnormalities developing in our *TPN* mice highlight the requirement for Akt hyperactivation to enhance the mTORC1-dependent development of TSC neurological lesions. Here we have shown that the mechanism accounting for the sustained activation of Akt observed in *TPN* mice is the impairment of the negative feedback loop driven by pS6K1 as a consequence of *Pten* loss. Based on this assumption, we might hypothesize that the same feedback mechanism may not be active in human SENs and SEGAs as well. Given that we did not find any mutation in *PTEN* or in protein interacting with it in human SENs/SEGA, other genetic events might be responsible for the negative feedback loop inactivity and/or for the increase in Akt signaling in human lesions, such as those recently described that lead to activation of the PI3K/AKT/mTOR pathway in distinct types of tumors (26). Indeed, we reported that the genes upregulated in human SEGAs were enriched in several AKT-associated pathways and genes (20).

Another interesting molecular event that emerged from our results was the hyperactivation of mTORC2, retrieved not only in *TPN* mouse and pNSC-derived SEGAs, but also in the corresponding human lesions. Loss of the Tsc1-Tsc2 complex is known to attenuate mTORC2 activation, independent of Rheb and of the mTORC1-dependent negative feedback on Akt (27). However, as in our mouse models, *Pten* loss might promote Akt signaling toward its many downstream substrates, including mTORC2. Indeed, it has been recently shown that, in a variety of tissue-specific cell lines, Akt_{T308} may work as an upstream activator of mTORC2 by phosphorylating mSin1_{T86} (28, 29). By the same extent, in our SEGA lesions, mTORC2 might be hyperactivated by increased Akt_{T308} phosphorylation, together with the contribution of other molecular players. The resulting mTORC2 hyperactivation might further promote Akt signaling, giving rise to a positive feedback loop on Akt_{S473} (29). Alternatively, the accumulation of PtdIns(3,4,5)P₃ (PIP₃) species through *Pten* loss may also activate mTORC2 by releasing SIN1-PH inhibition (30). As such, in addition to ERK hyperphosphorylation, being previously described as restricted to human SEGAs (12) (13) (19), mTORC2 hyperactivation might also be involved in the progression of SENs into SEGAs, as suggested by the impaired tumorigenicity of SEGA pNSCs following mTORC2 inactivation by *Rictor* knockdown. Importantly, since the histo-morphological features of SENs and SEGAs failed to show any correlation with the clinical course or disease severity, the activation status of mTORC2 might be exploited as a novel

biomarker to help identifying TSC patients with SENs at risk of evolution into SEGA or stratifying SEGA-bearing patients.

Here we reported that single mTOR inhibition by rapamycin is sufficient to reduce mouse SEGA burden. Rapalog-induced mTOR inhibition in cancer cell lines and in tumor models displaying mTOR hyperactivation is known to promote IRS-1 expression and to abrogate feedback inhibition of the pathway, resulting in prolonged Akt activation. To overcome this issue, dual inhibition of mTOR and Akt has been proposed as alternative strategy to rapalogs in order to treat TSC-associated lesions. In model systems displaying mTOR hyperactivation by deletion of *Tsc1* only, different studies described the effect of the combined inhibition of mTOR and Akt by co-administering either rapamycin with a single Akt inhibitor (31), or by delivering a dual PI3K-mTOR inhibitor (32). The first study indicated that the combination of rapamycin (delivered, to be noted, at unusually low doses) and single Akt inhibitor was more effective than each single agent alone in impairing the growth of *Tsc1*^{-/-}/*Tsc2*^{-/-} fibroblast-derived grafts (31). On the contrary, the second study reported that the rapalog and the dual inhibitor had indistinguishable effects on the growth of TSC-associated mouse kidney cystadenomas and tumors (32).

Differently, our experimental setting relies on the constitutive activation of not only mTOR but also Akt through Pten loss that makes the negative feedback on IRS-1 inactive and leads to basal Akt and mTORC2 hyperactivation. Indeed, in our study, we demonstrated persistent mTORC2 hyperactivation in both mouse brain lesions and human SEGA specimens and proved that it plays a central role in the regulation of SEGA growth. As such, the superior efficacy of rapamycin treatment on the growth of mouse SEGAs in comparison with the dual PI3K-mTOR kinase inhibitor PI-103 as described in our study might relate with the observation that prolonged rapamycin treatment strongly impairs Akt signaling by very efficiently interfering with the assembly of mTORC2 (33). Accordingly, although PI-103 was effective in reducing both pS6 and pAkt activation in mouse SEGAs, it performed poorly in inhibiting mTORC2, as shown by the sustained activation of the mTORC2 surrogate markers pAkt_{S473} and pNDRG1. Thus, in agreement with results from recent clinical trials (34) (35), chronic treatment with rapalogs alone seems to be sufficient for significantly reducing the burden of brain-associated TSC lesions as SEGAs.

To date, genetic and biochemical studies on TSC have been performed mostly by exploiting *Tsc1* or *Tsc2* null mouse embryonic fibroblasts or other standard cell lines, which, although being highly

proficient as in vitro model systems, do not recapitulate tissue-specific features. Very recently, iPSC-derived neural progenitors have been isolated from TSC patients' specimens. However, these cellular models only partially reproduce the neurological defects seen in TSC (36, 37). On the contrary, the mouse SEN and SEGA pNSCs described in our study make available a powerful and unprecedented in vitro model that uniquely mimics the cellular and molecular features of TSC brain abnormalities also upon transplantation, as demonstrated by IHC and RNA-seq based transcriptome profiling of pNSC-derived mouse SEGAs, and that, together with the corresponding in vivo mouse models, might be instrumental to identify lesion-specific molecular alterations and novel therapeutic vulnerabilities.

Methods

Generation of *Tsc1^{c/c}Pten^{c/c}/Nestin-CreER^{T2+}* (TPN) mice

To generate *Tsc1^{c/c}Pten^{c/c}/Nestin-CreER^{T2+}* (TPN) mutant mice, mixed background (129S4/SvJae, C57BL/6) *Tsc1^{cc}/Pten^{cc}* mice (both from Jackson Laboratories) were intercrossed with *Nestin-CreER^{T2}* heterozygous mice (17). We obtained *Tsc1^{c/w}Pten^{c/w}/Nestin-CreER^{T2}* mice in Mendelian ratios, which were then mated twice with *Tsc1^{cc}/Pten^{cc}* mice, in order to obtain *Tsc1^{c/c}/Pten^{c/c}/Nestin-CreER^{T2+}* mice. We used (c), WT and (-), to denote the conditional (floxed), WT, and null alleles of *Tsc1/Pten* mice. To monitor *Cre* activity, we intercrossed TPN mice with a Tomato (tdT) conditional reporter mouse line [from Jackson laboratory; B6.Cg-Gt(ROSA)26Sortm14(CAG-tdTomato)Hze/J]. Mutant animals were genotyped by tail-derived gDNA PCR by using the following primers: *Tsc1* F4536: AGGAGGCCTCTTCTGCTACC; *Tsc1* R6548: TGGGTCCTGACCTATCTCCTA; *Tsc1* R4830: CAGCTCCGACCATGAAGTG; *Pten* F: CAAGCACTCTGCGAACTGAG; *Pten* R: AAGTTTTTGAAGGCAAGATGC; *Cre* F: TATATCTTCAGGCGCGCGGT; *Cre* R: GCAATCCCCAGAAATGCCAG. *TdT* F oIMR9020 wt: AAGGGAGCTGCAGTGGAGTA; *TdT* R oIMR9021 wt: CCGAAAATCTGTGGGAAGTC; *TdT* F oIMR9105 mut: CTGTTTCCTGTACGGCATGG; *TdT* R oIMR9103 mut: GGCATTAAAGCAGCGTATCC.

For CreER^{T2} activation, Tamoxifen (TMX) (Sigma-Aldrich, St Louis, MO) was dissolved in Corn Oil (Sigma-Aldrich) at a final concentration of 10 mg/ml and then injected at 0.1 mg/gr, intraperitoneally at the different post-natal time points.

Immunostaining on Frozen Sections

Brains from adult mice were fixed for 24 hours in 4% PFA at 4°C, dehydrated with sucrose 30% and then frozen in OCT. Ten µm-thick frozen sections were washed with PBS, fixed with 4% PFA for 10', and incubated with 0.1% Triton/1% BSA/PBS for 30'. Unspecific sites were blocked with the blocking solution 1% BSA/10% NGS/PBS for at least 30'. Sections were incubated overnight with primary antibodies (Abs) and revealed with Alexafluor secondary Abs (see Supplemental List 3 for details). Sections were counterstained with DAPI. Images were acquired by a Nikon camera mounted on Nikon microscope using CellF imaging software (Soft Imaging System GmbH).

Immunostaining on Paraffin-Embedded sections

From paraffin-embedded mouse brains and human samples, 2 μm -thick paraffin sections were obtained, deparaffinized, rehydrated, treated for antigen retrieval, and incubated in 10% serum blocking solution prior to the incubation with primary antibodies at room temperature (RT) for 1 hr or at 4°C for 18 hr (see Supplemental List 3 for details).

Biotin-conjugated secondary antibodies (Vector Laboratories) were employed for Vectastain Elite ABC development and Dako EnVision+Dual Link System Peroxidase (Dako Cytomation). Images were acquired through an Olympus DP70 camera mounted on Olympus Bx60 microscope using CellF imaging software (Soft Imaging System GmbH).

Isolation and characterization of pNSCs from control and mutant *TPN* mice

Postnatal neural stem cell (pNSC) cultures were established by the NeuroSphere Assay (NSA) (38) under mild hypoxic (5% O_2) culture conditions from the SVZ of adult control and mutant P10 and P15-17 *TPN* mice. Tissues from single animals were dissociated by trituration after enzymatic digestion in a papain-containing mixture and used to establish single neurosphere cultures. Cells were cultured in NSA medium, *i.e.* DMEM/F12 supplemented with EGF (20 ng/ml) and FGF2 (10 ng/ml) (Peprotech) (39). Neurospheres were collected every three to five days and, after dissociation, seeded under the same culture conditions. The total number of viable cells was assessed at each passage by Trypan Blue (Sigma-Aldrich) exclusion.

To evaluate multipotency and differentiation potential, pNSCs were seeded at a density of 3×10^4 cells/ cm^2 on Matrigel-coated glass coverslips in 24-well plates. Cells were then cultured sequentially in different media to promote, respectively, the selection, expansion and differentiation of pNSCs. Briefly, pNSCs were cultured for 48 hours in proliferation medium containing both EGF and FGF2 to select for undifferentiated progenitors, followed by three days of culture in the same medium containing only FGF2, in order to promote the expansion of lineage-restricted precursors. Then, to promote terminal differentiation, cells were cultured in mitogen-free medium containing 2% FBS for additional 5 days. Cells were fixed with 4% PFA for 10 minutes after 48 hours and at the end of differentiation and then processed for the detection of lineage antigens.

Immunofluorescence on pNSCs

Cells were incubated with 0.1%Triton/1%BSA/PBS for 30'. Unspecific sites were blocked with blocking solution 1%BSA/10%NGS/PBS for at least 30'. Coverslips were incubated overnight with primary antibodies (Abs) and revealed with Alexafluor secondary Abs (see Supplemental List 3 for details). Images were acquired by Nikon camera (DS-Ri2) mounted on Nikon microscope (ECLIPSE E600) using *CellF imaging software* (NIS-Elements F 4.30.01 64bit).

Western blotting

Each frozen tissue/cell pellet was homogenized in 10x volume of RIPA lysis buffer (10mM Tris-Cl, pH 7.2, 150mM NaCl, 1mM EDTA pH 8) with 1% Triton X-10/0.1% deoxycholate, 0.1% SDS and protease and phosphatase inhibitor mixture (Roche). Samples were then diluted in Laemmli's SDS-sample buffer. Proteins were separated by electrophoresis on 10% polyacrilamide gels, as in kit TGX Stain-Free™ FastCast™ Acrylamide (BIO-RAD) protocol, and transferred as Trans-Blot® Turbo™ Transfer System (BIO-RAD) protocol, onto trans-blot nitrocellulose membranes (BIO-RAD) as Trans-Blot® Turbo™ RTA Transfer kit protocol. Ponceau staining (Sigma-Aldrich) was performed to confirm that the samples were loaded equally. The membranes were blocked in 5% nonfat dry milk in TBS-T (pH 7.4, with 0.1% Tween 20) for 1h at room temperature. Primary antibodies were diluted in 3% bovine serum albumine (BSA, Sigma-Aldrich) in TBS-T, and the membranes were incubated overnight at 4°C (see Supplemental List 3 for details). The primary antibody was removed, and the blots were washed in TBS-T and then incubated for 1 h at RT in horseradish peroxidase conjugated secondary antibodies (Amersham). Reactive proteins were visualized using Clarity™ Western ECL substrate (BIO-RAD) kit and exposure was performed by using UVItec (CAMBRIDGE MINI HD, Eppendorf). Images were acquired by NineAlliance software.

Treatment of autochthonous mouse SENS and SEGAs with rapamycin

For in vivo administration, rapamycin (LC-Labs, USA) was dissolved in 100% ethanol, stored at -20°C, and diluted in a vehicle solution containing 5% Tween 80, 5% PEG 400 (Sigma-Aldrich) immediately before injection. Mice were injected intra-peritoneally (i.p.) with either 6mg/kg of drug or vehicle every 2 days. For in vitro treatment, rapamycin was dissolved in DMSO and used at a final concentration of 100nM in medium.

Evaluation of tumorigenicity

For subcutaneous injection, 3×10^6 SEN and SEGA pNSCs, subcultured in vitro for 30-37 passages, were transferred in 200 μ l of PBS and injected into the right flank of 45-60 days old *nu/nu* female mice. Mice were sacrificed at different time points between 4-12 weeks post-injection, according to the pNSC line originally injected.

Quantitative (q) polymerase chain reaction (PCR) analysis

Total RNA was extracted using the RNeasy Mini kit (Qiagen). One microgram of total RNA was reverse transcribed by using first strand synthesis kit Superscript III RNaseH Reverse Transcriptase (Invitrogen) and OligodT primers. Quantitative real-time PCR was carried out by IQ SybrGreen technology (BioRad), following manufacturer's instructions. β -Actin was used as housekeeping gene. The sequences of mouse-specific *Gpnmb* primers were: forward CGCCTCCACCTTCAACTC; reverse CAATTGTGATGGTGGCTCTG.

RNA sequencing

RNA from mouse SEGAs and wild-type NSCs was extracted by using the RNeasy mini kit (Qiagen) according to manufacturer's protocol. The cDNA was synthesized starting from total RNA by QuantSeq 3' mRNA-Seq Library Prep Kits (Lexogen). After barcoding, the RNA libraries were pooled, denatured and diluted to 2.4 pM final concentration. RNA sequencing was performed by using NextSeq 550 (Illumina) set for 76 cycles in single end (SE), yielding an average of 15×10^6 clusters for each sample. Sequences were aligned using STAR (version 2.5.3a) on the reference genome GRCm38; association between reads and genes has been performed by feature counts, using gencode (version M13) basic annotation as reference. Analysis of count data was performed using the DESeq2 (differential gene expression analysis based on the negative binomial distribution) pipeline (version 1.0.19). The independent filtering of genes with low counts was set to a mean of 9 raw counts between all samples. The cut off imposed for differential gene expression was the one suggested by the SEquencing Quality Control consortium, which defines a gene as differentially expressed when it has an associated FDR value lower than 0.1 ($p\text{-adj} < 0.1$, Benjamini and Hochberg correction) and, at the

same time, the absolute value of its log2FC is greater than 1 ($\log_2\text{FC} > 1$ or $\log_2\text{FC} < -1$). RNA-seq data are available at NCBI GEO (GEO accession number GSE109321).

Bioinformatics analysis

Differentially expressed gene lists were analyzed using pre-ranked gene set enrichment analysis (GSEA) (40). Genes were pre-ranked using the log2FC of the expression values between mouse SEGAs vs. control samples. The human SEGA gene set included in the GSEA was obtained from (20). Pathway enrichment analysis was performed by EnrichR.

Gene silencing

Rictor silencing was performed by exploiting commercially available lentiviral vectors coding for gene-specific shRNA clones (Mission RNAi, Sigma-Aldrich). Infection of CSCs was performed according to the manufacturer's instructions.

Treatment of subcutaneous mouse SEGAs with rapamycin and dual inhibitor.

For subcutaneous injection, 3×10^6 SEGA pNSCs (L1) were injected into the right flank of 45-60 days old *nu/nu* female mice ($n=3$; one control mouse out of the originally 4 was excluded from the study because its volume value was a statistical outlier, *i.e.* greater than two standard deviations from the mean). When tumors reached 10-20 mm³ in volume, mice were treated for 5 days a week with vehicle or each of the two inhibitors. Rapamycin was prepared and delivered as outlined above; PI-103 (Selleck Laboratories, USA) was dissolved in 100% DMSO, stored at -20°C, and diluted in a vehicle solution containing 50% DMSO at a final concentration of 5 mg/kg immediately before i.p. injection. Mice were sacrificed 71 days after transplantation and tumors processed for IHC.

Statistics

For animal experiments, *n* represents the number of animals generated, treated and analyzed. For experiments involving in vitro NSC cultures, *n* represents the number of single mouse-derived NSC lines. For experiments involving transplanted NSC lines, *n* represents the number of individual animals that were transplanted with a single NSC line.

Results for continuous variables were expressed as mean \pm standard error mean (s.e.m.). Two-group comparisons were performed with the independent samples' one-tailed Student *t* test. P values <0.05 were considered statistically significant. *: $p<0.05$; **: $p<0.01$; ***: $p<0.005$; ****: $p<0.001$.

Study approval

The retrospective study on human SEN and SEGA samples ($n=3$ and $n=15$, respectively) was conducted in compliance with the Declaration of Helsinki and with policies approved by the Ethics Board of Spedali Civili di Brescia, University of Brescia. Specifically, for the retrospective and exclusively observational study on archival material obtained for diagnostic purpose, patient consent was not needed (Delibera del Garante n. 52 del 24/7/2008 and DL 193/2003).

All animal experiments were approved by and performed in accordance with the guidelines of the International Animal Care and Use Committee.

Author contributions

P. Z. designed and performed experiments, acquired and analyzed data, prepared the figures and wrote the manuscript. F. C. and E. T. performed experiments. M.C. performed experiments, acquired and analyzed data. P. L. P. analyzed data. R. G. conceived and supervised the project, designed experiments and wrote the manuscript.

Acknowledgements

We wish to thank Giulia Scotti and Ivan Molineris at Centre for Translational Genomics and Bioinformatics, Ospedale San Raffaele for RNA-seq data processing, GSEA and meta-analysis. This work was supported by Associazione Sclerosi Tuberosa (AST) to R. G. and by Telethon (grant GGP13022) to R. G. and P. L. P.

References

1. Caban C, Khan N, Hasbani DM, and Crino PB. Genetics of tuberous sclerosis complex: implications for clinical practice. *The application of clinical genetics*. 2017;10(1-8).
2. Curatolo P, Bombardieri R, and Jozwiak S. Tuberous sclerosis. *Lancet*. 2008;372(9639):657-68.
3. Crino PB. mTOR: A pathogenic signaling pathway in developmental brain malformations. *Trends Mol Med*. 2011;17(12):734-42.
4. Crino PB. The mTOR signalling cascade: paving new roads to cure neurological disease. *Nat Rev Neurol*. 2016;12(7):379-92.
5. Way SW, McKenna J, 3rd, Mietzsch U, Reith RM, Wu HC, and Gambello MJ. Loss of Tsc2 in radial glia models the brain pathology of tuberous sclerosis complex in the mouse. *Hum Mol Genet*. 2009;18(7):1252-65.
6. Magri L, Cambiaghi M, Cominelli M, Alfaro-Cervello C, Cursi M, Pala M, Bulfone A, Garcia-Verdugo JM, Leocani L, Minicucci F, et al. Sustained activation of mTOR pathway in embryonic neural stem cells leads to development of tuberous sclerosis complex-associated lesions. *Cell Stem Cell*. 2011;9(5):447-62.
7. Zhou J, Shrikhande G, Xu J, McKay RM, Burns DK, Johnson JE, and Parada LF. Tsc1 mutant neural stem/progenitor cells exhibit migration deficits and give rise to subependymal lesions in the lateral ventricle. *Genes Dev*. 2011;25(15):1595-600.
8. Carson RP, Van Nielen DL, Winzenburger PA, and Ess KC. Neuronal and glia abnormalities in Tsc1-deficient forebrain and partial rescue by rapamycin. *Neurobiol Dis*. 2012;45(1):369-80.
9. Magri L, Cominelli M, Cambiaghi M, Cursi M, Leocani L, Minicucci F, Poliani PL, and Galli R. Timing of mTOR activation affects tuberous sclerosis complex neuropathology in mouse models. *Dis Model Mech*. 2013.
10. Magri L, and Galli R. mTOR signaling in neural stem cells: from basic biology to disease. *Cell Mol Life Sci*. 2013.
11. Feliciano DM, Quon JL, Su T, Taylor MM, and Bordey A. Postnatal neurogenesis generates heterotopias, olfactory micronodules and cortical infiltration following single-cell Tsc1 deletion. *Hum Mol Genet*. 2011.
12. Jozwiak J, Grajkowska W, Kotulska K, Jozwiak S, Zalewski W, Zajackowska A, Roszkowski M, Slupianek A, and Wlodarski P. Brain tumor formation in tuberous sclerosis depends on Erk activation. *Neuromolecular Med*. 2007;9(2):117-27.
13. Siedlecka M, Szlufik S, Grajkowska W, Roszkowski M, and Jozwiak J. Erk activation as a possible mechanism of transformation of subependymal nodule into subependymal giant cell astrocytoma. *Folia Neuropathol*. 2015;53(1):8-14.
14. Manning BD, Logsdon MN, Lipovsky AI, Abbott D, Kwiatkowski DJ, and Cantley LC. Feedback inhibition of Akt signaling limits the growth of tumors lacking Tsc2. *Genes Dev*. 2005;19(15):1773-8.
15. Zhu G, Chow LM, Bayazitov IT, Tong Y, Gilbertson RJ, Zakharenko SS, Solecki DJ, and Baker SJ. Pten deletion causes mTORc1-dependent ectopic neuroblast differentiation without causing uniform migration defects. *Development*. 2012;139(18):3422-31.
16. Lim DA, and Alvarez-Buylla A. The Adult Ventricular-Subventricular Zone (V-SVZ) and Olfactory Bulb (OB) Neurogenesis. *Cold Spring Harbor perspectives in biology*. 2016;8(5).
17. Imayoshi I, Ohtsuka T, Metzger D, Chambon P, and Kageyama R. Temporal regulation of Cre recombinase activity in neural stem cells. *Genesis*. 2006;44(5):233-8.
18. Zhu G, Rankin SL, Larson JD, Zhu X, Chow LM, Qu C, Zhang J, Ellison DW, and Baker SJ. PTEN Signaling in the Postnatal Perivascular Progenitor Niche Drives Medulloblastoma Formation. *Cancer Res*. 2017;77(1):123-33.
19. Tyburczy ME, Kotulska K, Pokarowski P, Mieczkowski J, Kucharska J, Grajkowska W, Roszkowski M, Jozwiak S, and Kaminska B. Novel proteins regulated by mTOR in subependymal giant cell astrocytomas of patients with tuberous sclerosis complex and new therapeutic implications. *Am J Pathol*. 2010;176(4):1878-90.
20. Martin KR, Zhou W, Bowman MJ, Shih J, Au KS, Dittenhafer-Reed KE, Sisson KA, Koeman J, Weisenberger DJ, Cottingham SL, et al. The genomic landscape of tuberous sclerosis complex. *Nature communications*. 2017;8(15816).

21. Malaney P, Pathak RR, Xue B, Uversky VN, and Dave V. Intrinsic disorder in PTEN and its interactome confers structural plasticity and functional versatility. *Scientific reports*. 2013;3(2035).
22. Fan QW, Knight ZA, Goldenberg DD, Yu W, Mostov KE, Stokoe D, Shokat KM, and Weiss WA. A dual PI3 kinase/mTOR inhibitor reveals emergent efficacy in glioma. *Cancer Cell*. 2006;9(5):341-9.
23. Li Y, Muffat J, Omer A, Bosch I, Lancaster MA, Sur M, Gehrke L, Knoblich JA, and Jaenisch R. Induction of Expansion and Folding in Human Cerebral Organoids. *Cell Stem Cell*. 2017;20(3):385-96 e3.
24. Peretto P, Giachino C, Aimar P, Fasolo A, and Bonfanti L. Chain formation and glial tube assembly in the shift from neonatal to adult subventricular zone of the rodent forebrain. *J Comp Neurol*. 2005;487(4):407-27.
25. Chen J, Kwon CH, Lin L, Li Y, and Parada LF. Inducible site-specific recombination in neural stem/progenitor cells. *Genesis*. 2009;47(2):122-31.
26. Zhang Y, Kwok-Shing Ng P, Kucherlapati M, Chen F, Liu Y, Tsang YH, de Velasco G, Jeong KJ, Akbani R, Hadjipanayis A, et al. A Pan-Cancer Proteogenomic Atlas of PI3K/AKT/mTOR Pathway Alterations. *Cancer Cell*. 2017;31(6):820-32 e3.
27. Huang J, Dibble CC, Matsuzaki M, and Manning BD. The TSC1-TSC2 complex is required for proper activation of mTOR complex 2. *Mol Cell Biol*. 2008;28(12):4104-15.
28. Humphrey SJ, Yang G, Yang P, Fazakerley DJ, Stockli J, Yang JY, and James DE. Dynamic adipocyte phosphoproteome reveals that Akt directly regulates mTORC2. *Cell metabolism*. 2013;17(6):1009-20.
29. Yang G, Murashige DS, Humphrey SJ, and James DE. A Positive Feedback Loop between Akt and mTORC2 via SIN1 Phosphorylation. *Cell Rep*. 2015;12(6):937-43.
30. Liu P, Gan W, Chin YR, Ogura K, Guo J, Zhang J, Wang B, Blenis J, Cantley LC, Toker A, et al. PtdIns(3,4,5)P3-Dependent Activation of the mTORC2 Kinase Complex. *Cancer Discov*. 2015;5(11):1194-209.
31. Ji S, Lin W, Wang L, Ni Z, Jin F, Zha X, and Fei G. Combined Targeting of mTOR and Akt Using Rapamycin and MK-2206 in The Treatment of Tuberous Sclerosis Complex. *Journal of Cancer*. 2017;8(4):555-62.
32. Pollizzi K, Malinowska-Kolodziej I, Stumm M, Lane H, and Kwiatkowski D. Equivalent benefit of mTORC1 blockade and combined PI3K-mTOR blockade in a mouse model of tuberous sclerosis. *Mol Cancer*. 2009;8(38).
33. Sarbassov DD, Ali SM, Sengupta S, Sheen JH, Hsu PP, Bagley AF, Markhard AL, and Sabatini DM. Prolonged rapamycin treatment inhibits mTORC2 assembly and Akt/PKB. *Mol Cell*. 2006;22(2):159-68.
34. Franz DN, Agricola K, Mays M, Tudor C, Care MM, Holland-Bouley K, Berkowitz N, Miao S, Peyrard S, and Krueger DA. Everolimus for subependymal giant cell astrocytoma: 5-year final analysis. *Ann Neurol*. 2015.
35. Trelinska J, Dachowska I, Baranska D, Stawiski K, Kotulska K, Fendler W, Jozwiak S, and Mlynarski W. Maintenance therapy with everolimus for subependymal giant cell astrocytoma in patients with tuberous sclerosis (the EMINENTS study). *Pediatric blood & cancer*. 2017;64(6).
36. Costa V, Aigner S, Vukcevic M, Sauter E, Behr K, Ebeling M, Dunkley T, Friedlein A, Zoffmann S, Meyer CA, et al. mTORC1 Inhibition Corrects Neurodevelopmental and Synaptic Alterations in a Human Stem Cell Model of Tuberous Sclerosis. *Cell Rep*. 2016;15(1):86-95.
37. Li Y, Cao J, Chen M, Li J, Sun Y, Zhang Y, Zhu Y, Wang L, and Zhang C. Abnormal Neural Progenitor Cells Differentiated from Induced Pluripotent Stem Cells Partially Mimicked Development of TSC2 Neurological Abnormalities. *Stem cell reports*. 2017;8(4):883-93.
38. Reynolds BA, and Rietze RL. Neural stem cells and neurospheres--re-evaluating the relationship. *Nat Methods*. 2005;2(5):333-6.
39. Gritti A, Parati EA, Cova L, Frolichsthal P, Galli R, Wanke E, Faravelli L, Morassutti DJ, Roisen F, Nickel DD, et al. Multipotential stem cells from the adult mouse brain proliferate and self-renew in response to basic fibroblast growth factor. *Journal of Neuroscience*. 1996;16(3):1091-100.
40. Subramanian A, Tamayo P, Mootha VK, Mukherjee S, Ebert BL, Gillette MA, Paulovich A, Pomeroy SL, Golub TR, Lander ES, et al. Gene set enrichment analysis: a knowledge-based approach for interpreting genome-wide expression profiles. *Proc Natl Acad Sci U S A*. 2005;102(43):15545-50.

Figure Legends

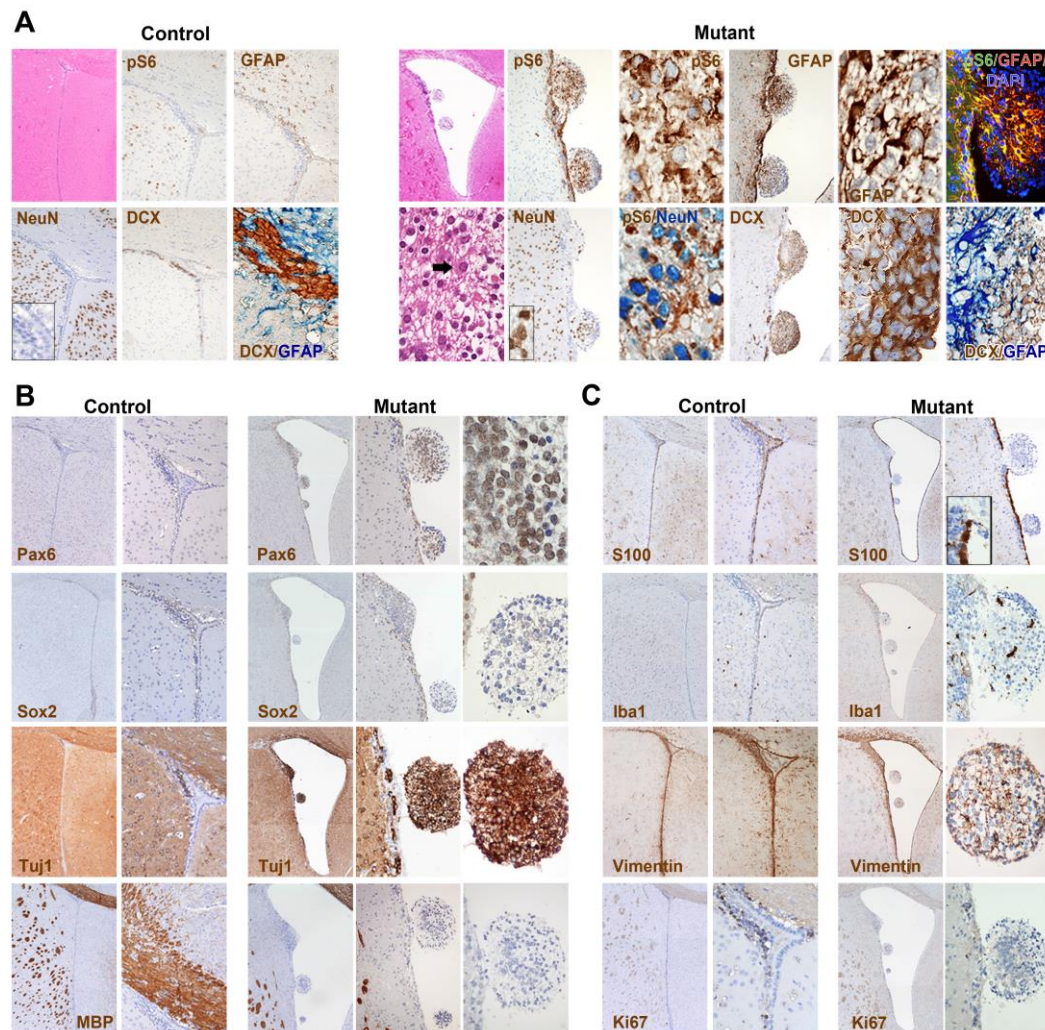


Figure 1. Targeted inactivation of *Tsc1* and *Pten* in early postnatal SVZ NSCs promotes the development of SVZ aberrant structures, reminiscent of subependymal nodules (SENs).

(A) Intraventricular nodular lesions were retrieved in the brain of *TPN* mice activated at P10 (H&E, magnification 40x and 400x) and never found in controls (H&E, 40x). The lesions comprised small cells that lied within a gliofibrillary matrix (H&E, 400x) and were pS6-, GFAP-IR, NeuN- and DCX-IR (IHC, 100x and 400x; controls, 40x, 100x, 400x for inset and DCX/GFAP staining). GFAP-IR and NeuN-IR cells were often colabeled for pS6 (IHC and IF, 400x). GFAP and DCX expression was never retrieved in the same cells (400x).

(B) The stem cells markers Pax6 and Sox2 were expressed only in the small cells of the lesions at low levels (mutant, 40x, 100x and 400x; controls, 40x and 100x), whereas the early neuronal marker Tuj1 was found in the majority of the cells (40x, 200x and 400x). The late oligodendroglial marker MBP was never expressed in the lesions (40x, 100x and 400x).

(C) S100 β immunoreactivity was restricted to ependymal cells and never found in the nodular lesions (40x and 100x; controls, 40x and 100x). Few numbers of Iba1-IR microglial cells and Vimentin-IR reactive glial cells were retrieved in the nodular lesions (40x and 200x; controls, 40x and 100x). The mitotic index of the lesions as measured by Ki67 was very low (40x and 200x).

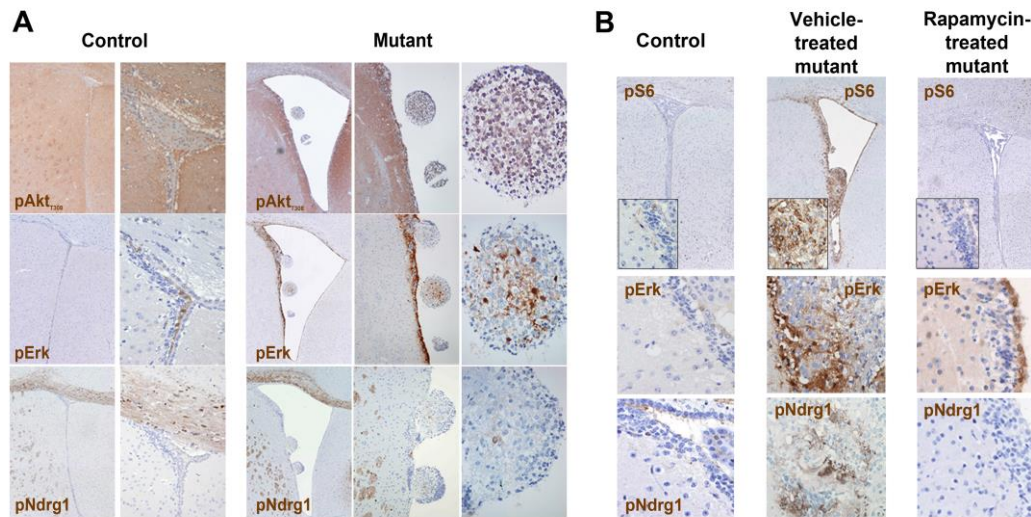


Figure 2 – The periventricular abnormalities developing in P10 *TPN* mice activate selected signaling pathways and are responsive to mTOR inhibition by rapamycin.

(A) Significant hyperactivation of pAkt_{T308} was observed in SEN-like lesions, whereas only low phosphorylation of Erk and Ndr1 was found (40x, 100x and 400x; controls, 40x and 200x for pAkt and pErk; 40x and 100x for pNdr1).

(B) Chronic rapamycin treatment from P19 to P75 reduced both hydrocephalus and the SVZ nodular lesions and restored the activation of pS6, pErk and pNdr1 to control levels (40x and 400x, insets, for pS6; 400x for pErk and pNdr1).

Representative analysis of $n=10$ pairs of control and mutant mice.

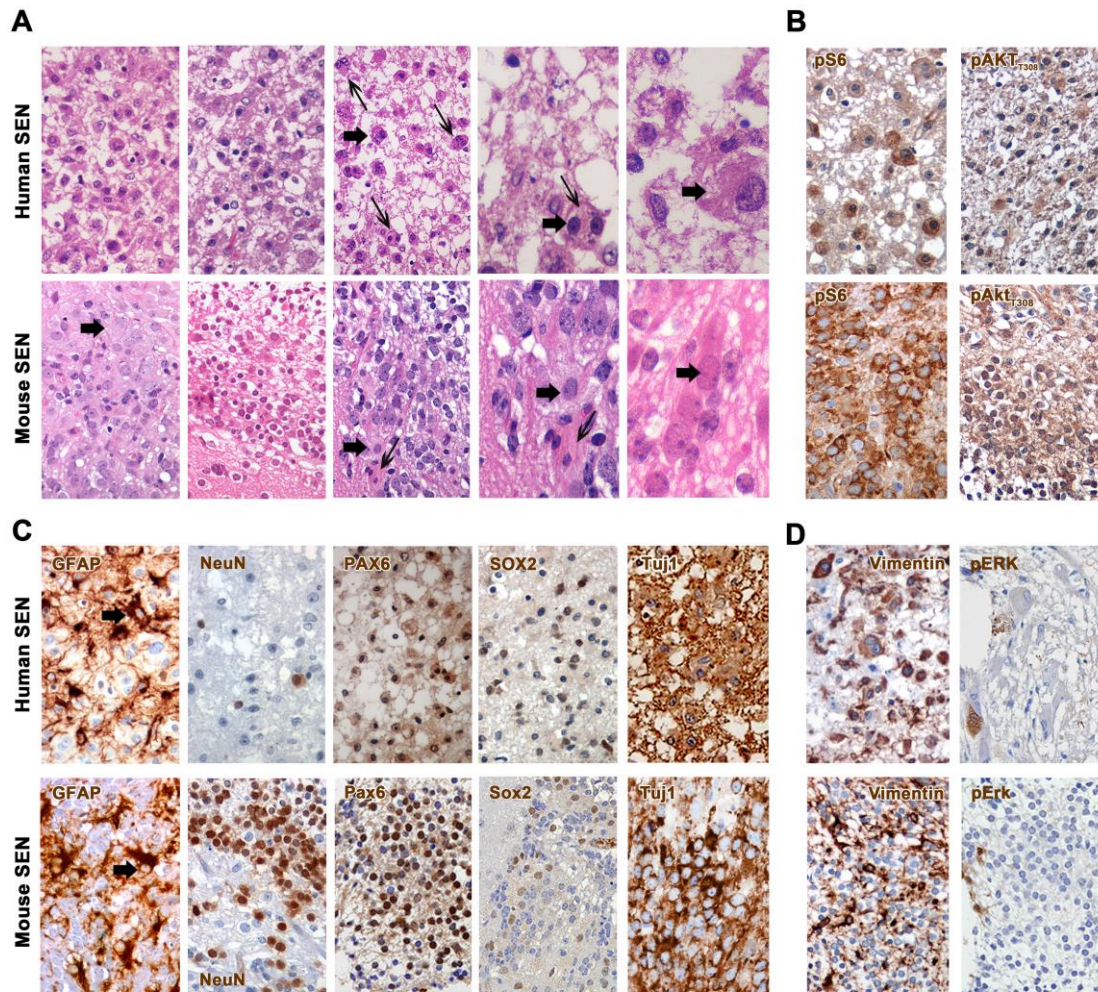


Figure 3. Mouse SENSs closely mimic the corresponding human manifestation.

(A) The morphology of human ($n=3$) and mouse SENSs ($n=3$) was characterized by the presence of a gliofibrillary mesh that contained a majority of small cells and only rare giant cells (thick arrows). Some large cells in human and mouse SENSs were also multinucleated (thin arrows; H&E, magnification 600x and 1000x).

(B) Many cells in human SENSs significantly hyperactivated pS6 and pAKT_{T308}, as observed in mouse SENSs.

(C) Only a minority of small cells within both human and mouse lesions expressed GFAP (arrows), mostly found in reactive astrocytes, and NeuN (600x). The stem cells markers Pax6 and Sox2 were expressed at low level in both human and mouse lesions, whereas the early neuronal marker Tuj1 was highly expressed in the majority of the cells.

(D) Reactive glial cells but also some giant and small cells (thin arrows) were IR for Vimentin in human and mouse SENSs. Low phosphorylation of Erk was found in both lesions (600x).

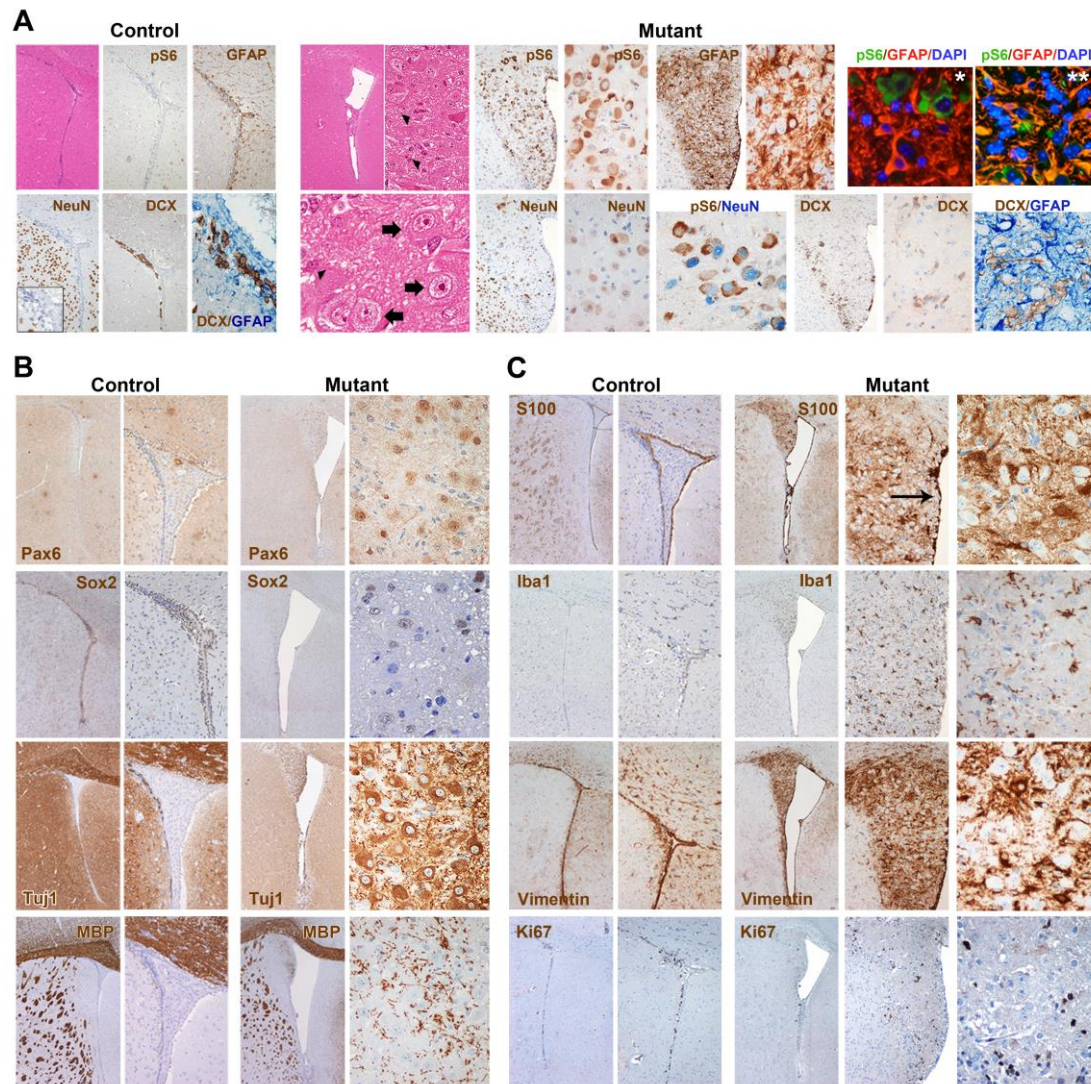


Figure 4. Targeted inactivation of *Tsc1* and *Pten* in late postnatal SVZ NSCs induces subependymal giant cell astrocytoma (SEGA)-like lesions.

(A) An aberrant expansion of the lateral ventricles was observed in *TPN* mice activated at P15-17, which were characterized by the presence of small (H&E, arrowheads) and large cells (H&E, thick arrows) intermixed within a lax fibrillary matrix (H&E, magnification 40x, 400x and 800x). These structures, which were never observed in control brains (H&E, 40x), contained many pS6-IR cells (100x and 400x). GFAP immunoreactivity was found mostly in reactive glial cells (IHC, 200x and 400x; IF, pS6 in green, GFAP in red and DAPI in light blue; 400x - panel*), and less frequently in clusters of pS6-IR cells (IF, pS6 in green, GFAP in red and DAPI in light blue; 400x - panel**). Ectopic NeuN-IR neuronal cells were scattered throughout the lesions, some of which were pS6-IR (200x and 400x). As opposed to SENs, only rare DCX-IR cells were found, which never colabeled with GFAP (200x and 400x; controls, 40x, 100x and 400x for inset and DCX/GFAP staining).

(B) Expression of Pax6 and Sox2 was restricted to large cells within the lesions, whereas Tuj1 expression was detected in most cells (mutants, 40x and 400x; controls, 40x and 100x). As opposed to SENs, several MBP-IR cells were found in the SEGA-like lesions.

(C) S100 β -IR cells were found in the intact ependymal layer (small arrow), as in controls (40x and 100x), as well as within the lesions (40x and 400x). High frequency of Iba1-IR microglial cells and Vimentin-IR reactive glial cells was observed in the lesions as compared to SENs (40x, 200x and 400x; controls, 40x and 100x). The mitotic index of the lesions as measured by Ki67 was still very low (40x, 200 and 400x).

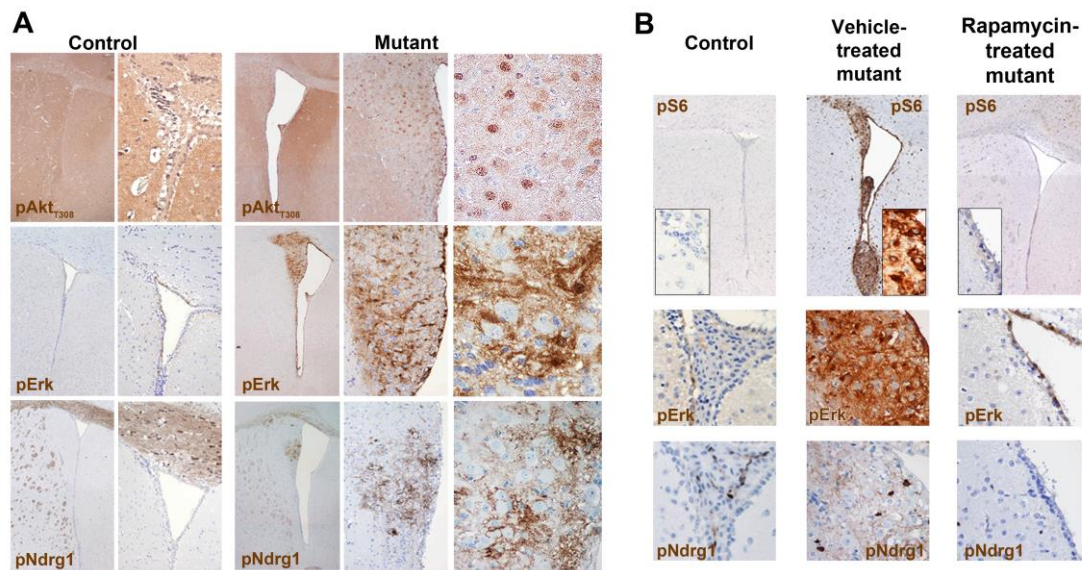


Figure 5 - The periventricular abnormalities developing in P15-17 TPN mice hyperactivate pErk and pNdr_{g1} and regress upon rapamycin treatment.

(A) SEGA-like lesions displayed strong hyperactivation of pAkt_{T308}, pErk and pNdr_{g1} (40x, 200x and 400x; controls, pAkt, 40x and 200x; pErk and pNdr_{g1}, 40x and 100x).

(B) Chronic rapamycin treatment from P24 to P185 decreased both hydrocephalus and the SVZ aberrant structures and reduced pS6, pErk and pNdr_{g1} phosphorylation to control levels (40x and 400x, insets, for pS6; 400x for pErk and pNdr_{g1}).

Representative analysis of $n=10$ pairs of control and mutant mice.

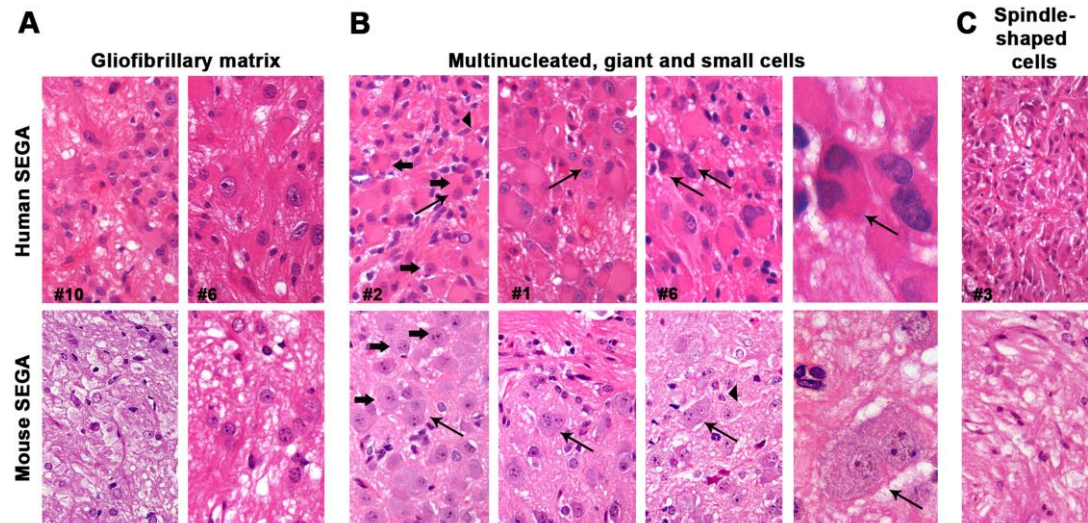


Figure 6. Mouse SEGAs reproduce the cellular heterogeneity of human SEGAs.

(A) The morphology of different specimens of human SEGAs ($n=6$) was characterized by the presence of a gliofibrillary matrix that surrounded different types of cells, a trait observed also in mouse SEGAs (P15-17 and P24-26 *TPN* mice; $n=3$) (H&E, magnification 600x).

(B) Large and giant cells (thick arrows) with balloon morphology that were also multinucleated (thin arrows), together with smaller cells (arrowheads), were found in human and, notably, also in mouse SEGAs samples (H&E, 600x and 1000x).

(C) Areas containing fascicles of spindle-shaped cells were observed in both human and mouse SEGAs (H&E, 600x).

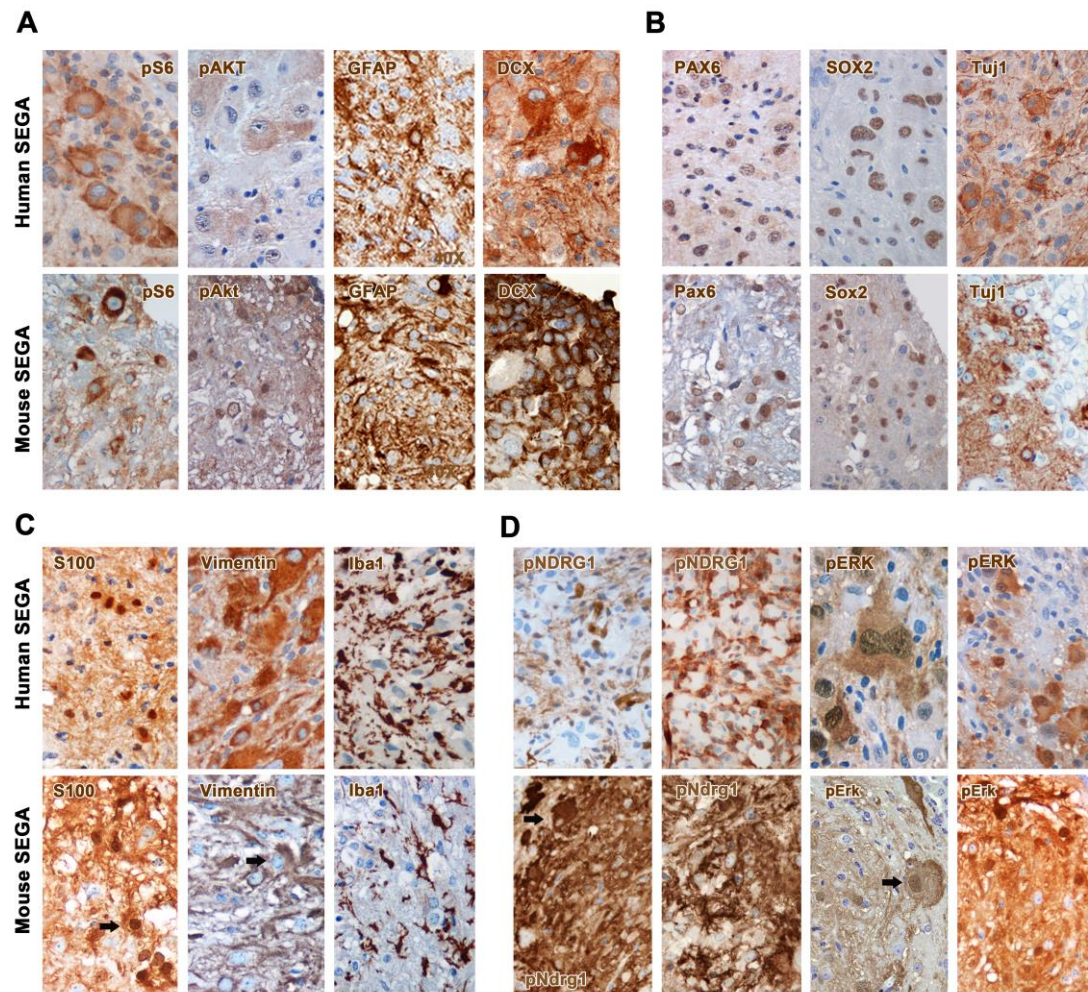


Figure 7 - Mouse SEGAs express similar markers as human SEGAs.

(A) Giant cells in human SEGAs significantly hyperactivated pS6 and pAKT_{T308}, as observed in mouse SEGAs. Many cells with variable size within both human and mouse lesions expressed GFAP and DCX (600x).

(B) Expression of the stem cells markers Pax6 and Sox2 and of early neuronal marker Tuj1 was detected in both human and mouse lesions (600x).

(C) S100 β -IR cells were retrieved in both human and mouse lesions. Many cells with different morphology were IR for Vimentin in human and mouse SEGAs. Interestingly, many Iba1-IR activated microglial cells were found in either lesion (600x).

(D) As opposed to SENs, strong hyperactivation of pNDRG1 and pERK was detected in SEGAs lesions of human and mouse origin (600x).

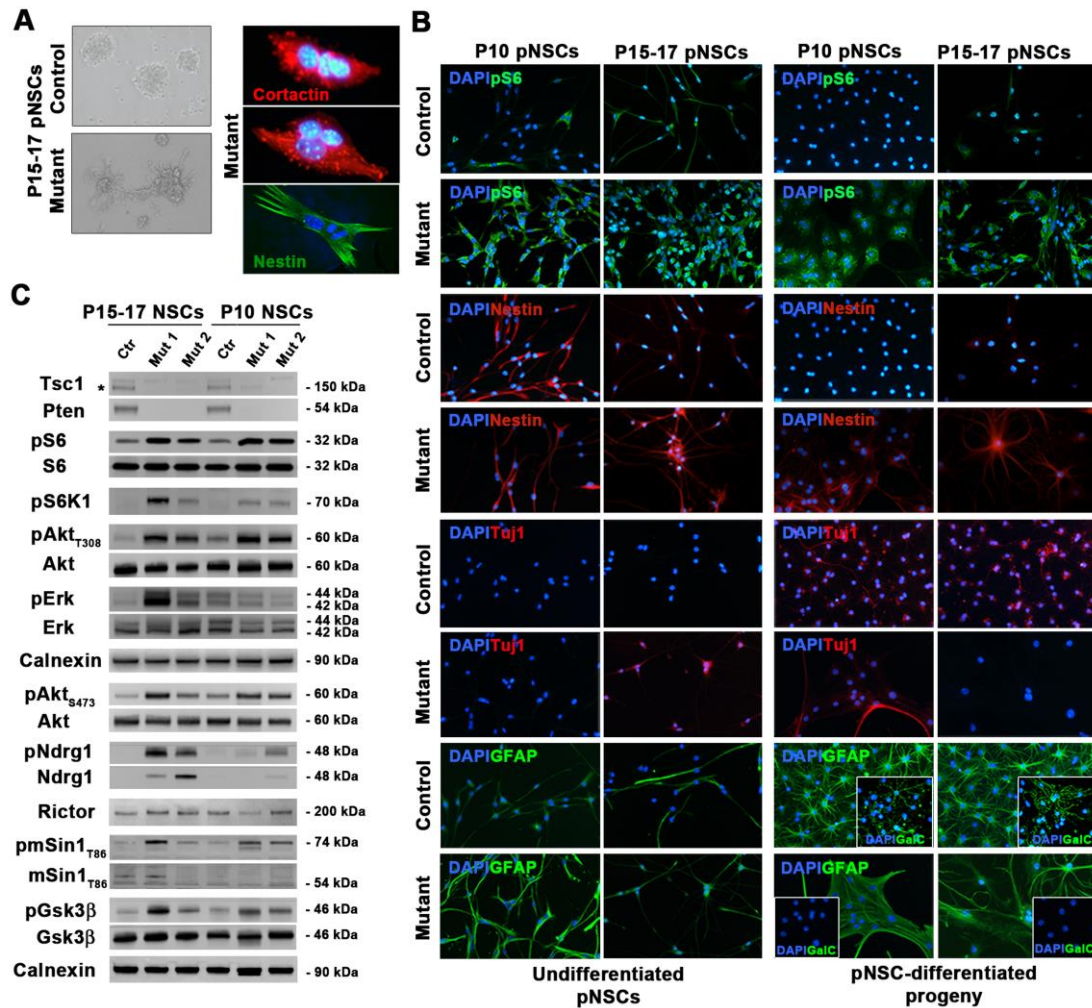


Figure 8. Postnatal NSCs isolated from SENs and SEGAs developing in *TPN* mice retain molecular and cellular features of their lesion of origin.

(A) Phase contrast microphotographs highlight the increased adhesive behavior of mutant pNSCs as compared to controls (representative P15-17 *TPN* pNSCs line L1; magnification 400x). SEGA-derived pNSC cultures contained multinucleated cells (representative P15-17 *TPN* pNSCs line L90; cortactin, red and Nestin, green; magnification 800x).

(B) Both undifferentiated and differentiated P10 and P15-17 *TPN* cultures (L22 and L1) showed higher pS6 phosphorylation and Nestin expression than controls (L26 and L4) (magnification 400x). Abnormal expression of neuronal and glial markers, such as Tuj1, GFAP and GalC-IR, was retrieved by IF in both undifferentiated and differentiated P10 and P15-17 mutant cultures as compared to controls (magnification 400x). Representative of $n=3$ pairs of pNSC lines for each activation time.

(C) WB of undifferentiated P10 and P15-17 pNSCs highlighted efficient deletion of Tsc1 (*: specific band) and Pten as well as different hyperactivation of mTORC1, Akt, ERK and mTORC2 in mutant *vs.* control pNSCs, with pERK and mTORC2 being more activated in SEGA pNSCs than in SEN pNSCs.

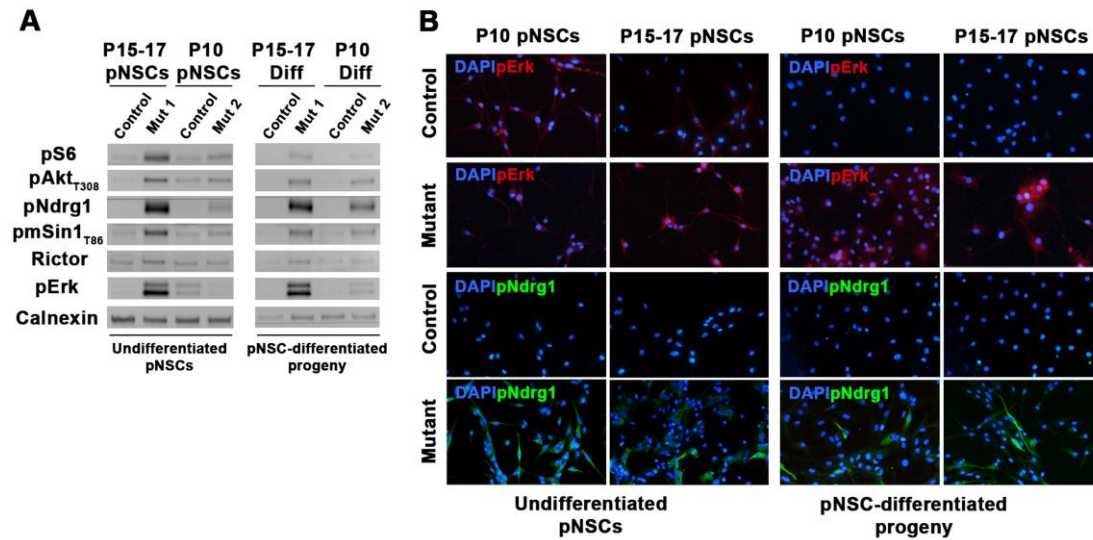


Figure 9. Postnatal NSCs isolated from SENs and SEGAs developing in *TPN* mice hyperactivate pErk and pNDRG1 upon differentiation.

(A-B) WB and IF of undifferentiated and differentiated P10 and P15-17 pNSC cultures indicated persisting hyperactivation of pErk and pNDRG1 even upon differentiation, in particular in SEGAs pNSC-derived progeny (magnification 400x). Representative P10 *TPN* pNSC line L22 and P15-17 *TPN* pNSC line L1.

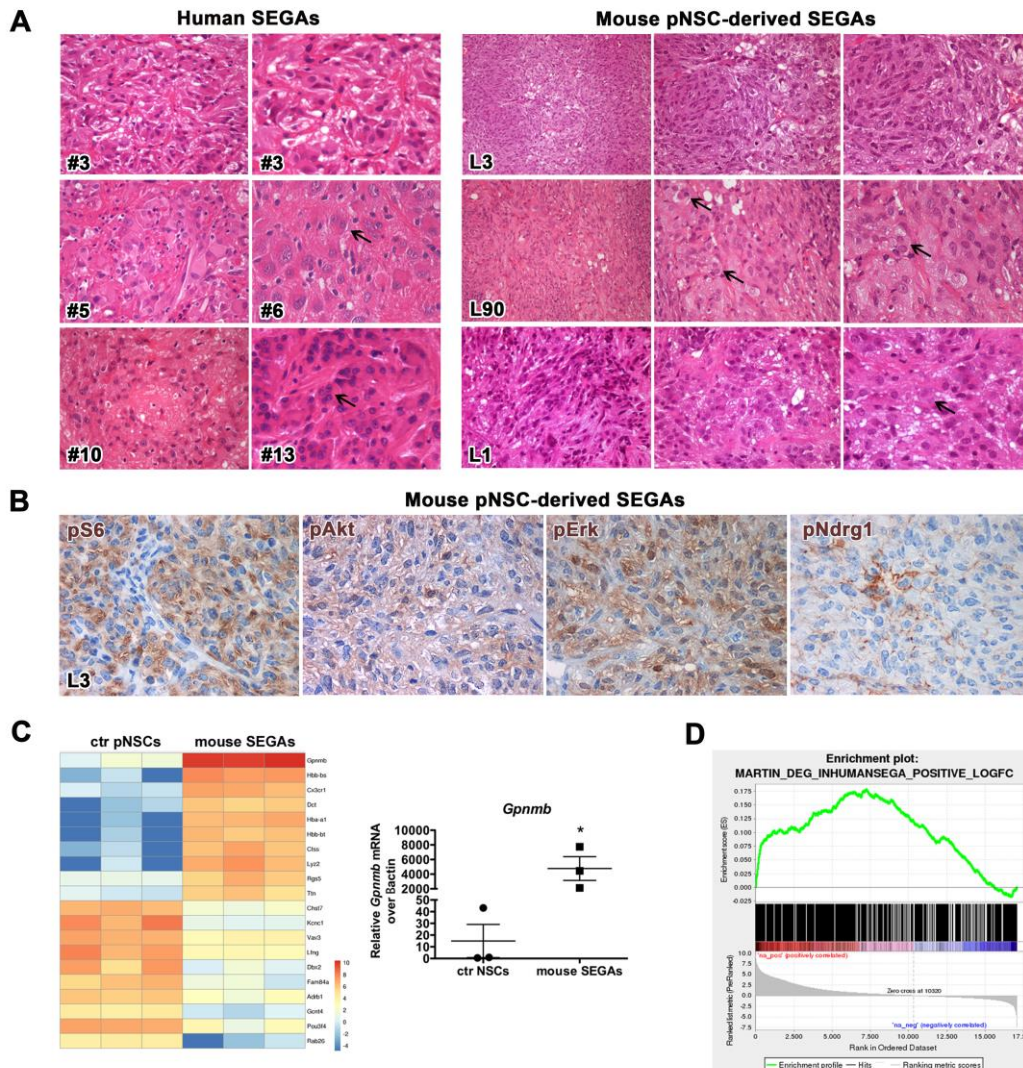


Figure 10. SEGA pNSCs are endowed with tumorigenic potential and give rise to secondary tumors that resemble the corresponding human lesions both histologically and molecularly.

(A) Tumors generated by the subcutaneous implantation of distinct pNSCs (H&E, right panels) reproduced the heterogeneity in morphology and cell composition observed in human SEGA samples (H&E, left panels). pNSC line L3-derived tumors were characterized by the prevalence of spindle-shaped cells, as in human specimen #3. Conversely, mouse SEGAs from L90 contained mostly large and giant cells, some of which were also multinucleated (thin arrows), as retrieved in patients #5 and #6. Tumors from line L1 comprised both spindle-shaped and giant cells at similar frequency, as shown in patients #10 and #13. (Magnification in human samples: 400x and 600x; magnification in mouse samples: L3 and L90 tumors, 200x, 400x and 600x; L1 tumors, 400x and 600x).

(B) Subcutaneous tumors did activate pS6, pAkt_{S473}, pErk and pNDRG1 (magnification 600x). Representative P15-17 *TPN* pNSC line L3.

(C) Heatmap showing the top 10 increased/decreased genes that were differentially expressed between control pNSCs and mouse SEGAs, ranked based on their p value ($p < 0.001$) and colored according to the scale blue=low and red=high ($n=3$ independent biological replicate for each condition). qPCR analysis confirms *Gpnmb* as the top ranking upregulated gene in mouse SEGAs ($n=3$ independent biological replicate for each condition). qPCR results were expressed as mean \pm SEM. Two-group comparisons were performed with the independent samples' *t* test. P values < 0.05 were considered statistically significant. Statistical significance of the data is indicated as follows: * $p < 0.05$ ($p = 0.0216$).

(D) Gene Set Enrichment Analysis (GSEA) enrichment plot indicating that the 809 genes, upregulated in human SEGAs vs. normal control human brain tissue, positively correlated with genes pre-ranked based on their expression in pNSC-derived mouse SEGAs vs. control pNSCs. Nominal *p* value: < 0.00001 ; FDR *q* value: < 0.00001 ; Enrichment Score (ES): 0.178; Normalized ES (NES): 5.69.

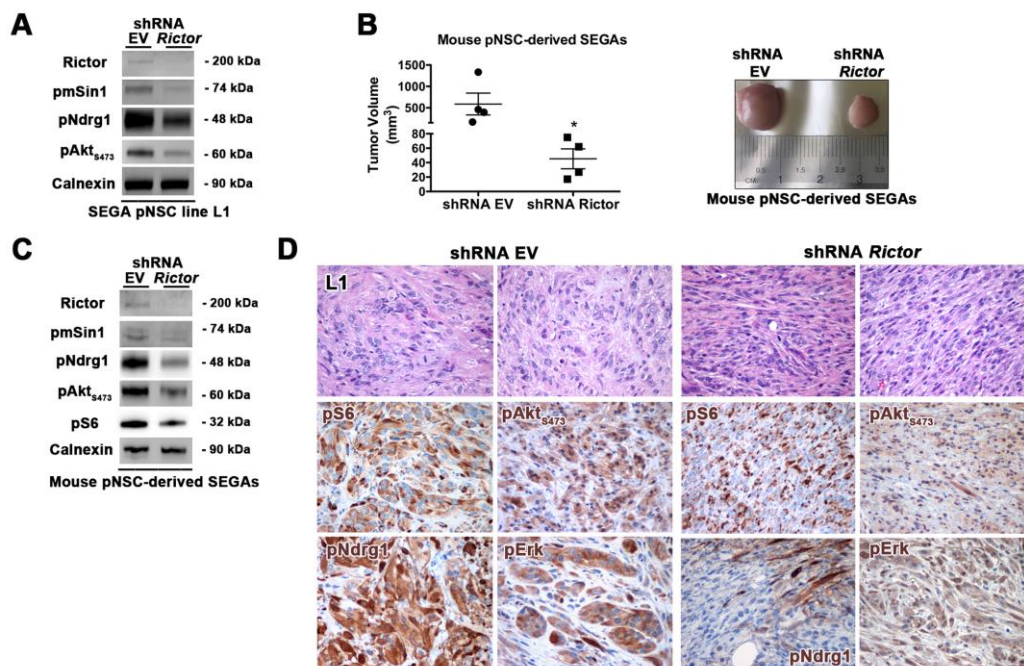


Figure 11 – The tumorigenic potential of SEGAs is modulated by mTORC2 pathway activation.

(A) *Rictor* knockdown in pNSC negatively impacted on mTORC2 activation (WB, left panel). WB contains distinct lanes coming from replicate samples run on parallel gels.

(B) *Rictor* silencing in pNSCs resulted in tumor growth impairment (histogram plot, left panel; example of tumor volumes, right panel). Results were expressed as mean \pm SEM. Two-group comparisons were performed with the independent samples' *t* test. P values <0.05 were considered statistically significant. Statistical significance of the data is indicated as follows: *: $p < 0.05$. Representative P15-17 *TPN* pNSC line L1.

(C) Tumors in which mTORC2 was inactivated showed decreased pAkt_{S473} and pNDRG1 activation (WB). WB contains distinct lanes coming from replicate samples run on parallel gels.

(D) *Rictor* silenced tumors were morphologically different from controls, as they did contain only rare giant and/or large cells, being mostly composed by spindle-shaped cells (H&E, 400x). In line with WB results, the activation of pAkt_{S473} and pNDRG1 was reduced in *Rictor* silenced tumors; no significant modifications were seen in pS6 and pERK activity (400x). Representative P15-17 *TPN* pNSC line L1.

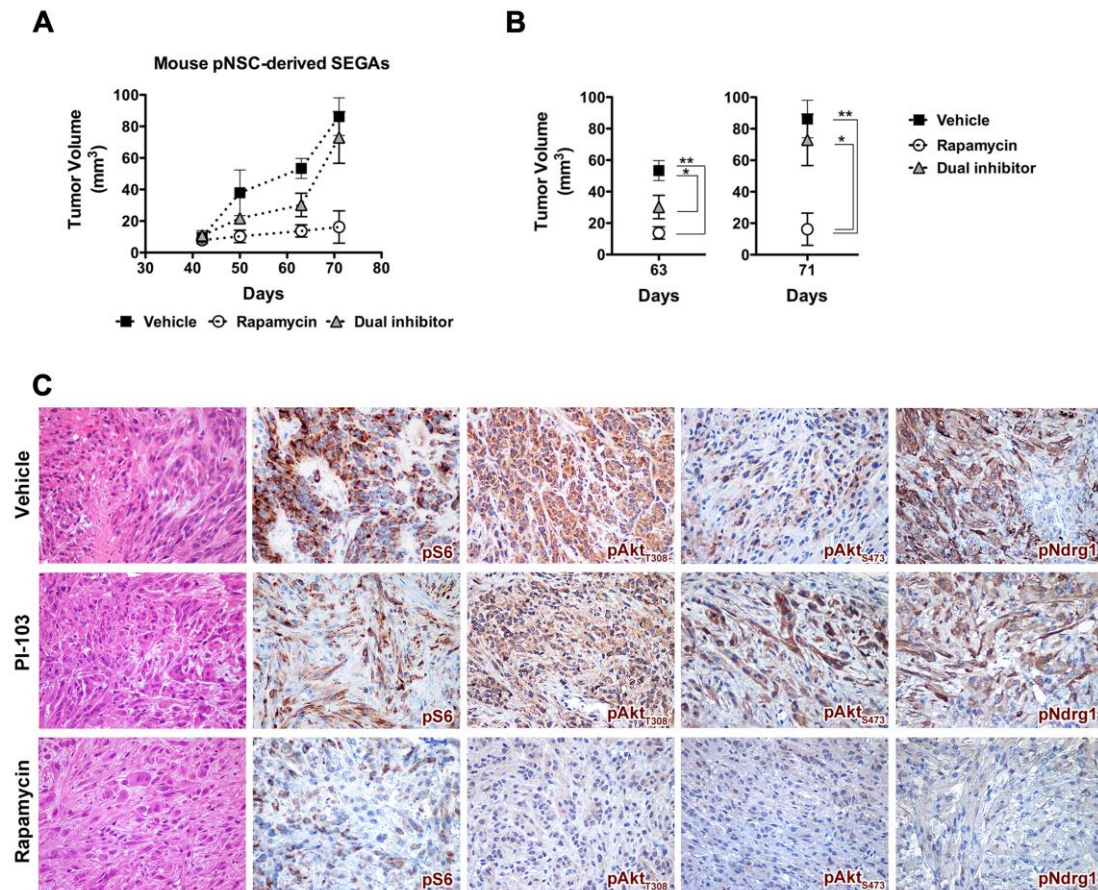


Figure 12 - Single mTOR inhibition by chronic rapamycin treatment effectively reduces SEGA growth.

(A-B) Chronic treatment with rapamycin and the dual PI3K-mTOR inhibitor PI-103 both resulted in impairment in the growth of pNSC-derived mouse SEGAs with respect to treatment with vehicle up to 63 after transplantation ($n=3$ replicates). Later, only rapamycin yielded sustained anti-tumor activity, whereas PI-103 wasn't effective any longer. Results were expressed as mean \pm SEM. Two-group comparisons were performed with the independent samples' t test. P values <0.05 were considered statistically significant. Statistical significance of the data is indicated as follows: *: $p < 0.05$; **: $p < 0.01$.

(C) When analyzed 71 days after transplantation, vehicle-treated tumors contained proliferating cells, which were atypical with either large eosinophilic cytoplasm or a spindle-shaped morphology with elongated hyperchromatic nuclei and foci of neoplastic necrosis. IHC showed strong and diffuse positivity for pS6, pAkt_{T308}, pAkt_{S473} and for pNDRG1 in most of the neoplastic cells. PI-103 treated tumors were characterized by moderate cellularity with features similar to vehicle-treated tumors. They were mainly composed of medium sized cells with eosinophilic cytoplasm and atypical nuclei with a minor component of spindle-shaped cells, sparse mitotic figures and only focal necrotic areas. Rapamycin-treated tumors did show strongly reduced cellularity as compared to vehicle- and dual inhibitor-treated tumors. They mostly comprised cells with large eosinophilic cytoplasm and round or oval nuclei with one or more prominent nucleoli. Spindle-shaped cells were rare, mitotic figures were only sporadic and no necrotic foci were found. IHC for pS6 showed heterogeneous signal with only few cells being faintly positive. pAkt_{T308}, pAkt_{S473} and pNDRG1 immunoreactive cells were barely detected and only lightly stained. Magnification, 400x.

Table 1 – Summary of morphological traits and molecular expression patterns found in autochthonous mouse SEN and SEGA, pNSC-induced mouse SEGAs, and human SENs and SEGAs.

Legend: 1+: rare (less than 10%); 2+: average (>10% - <50%); 3+: frequent (>50%); n.d.: not determined.

	Mouse SEN in P10 TPN mice	Human SEN		Mouse SEGA in P15-17 TPN mice	pNSC-derived mouse SEGAs	Human SEGA
Morphology						
Glio-fibrillary matrix (GFM)	Present	Present		Present	Present	Present
Small cells (SCs)	3+	3+		2+	1+	2+
Large cells (LCs)/ Giant cells (GCs)	1+	1+		2+	2+	2+
Multinucleated cells (MCs)	1+	1+		1+	2+	2+
Spindle-shaped cells (SpCs)	0	0		0 (1+ in P24-26 TPN mice)	2+	2+
Marker expression						
NeuN	2+	1+		1+	n.d.	0
GFAP	3+ in GFM 2+ in SCs	3+ in GFM 2+ in SCs		3+ in GFM 1+ in LCs	2+	3+ in GFM 1+ in LCs
Pax6	2+	2+		2+ in LCs/GCs	2+	2+
Sox2	1+	1+		1+	2+	2+
DCX	3+	3+		1+ in SCs	1+	1+ in LCs/GCs
Tuj1	3+	3+		3+	n.d.	3+
MBP	0	0		2+	n.d.	n.d.
S100 β	0	0		3+	2+	3+
Iba1	1+	1+		2+	n.d.	3+
Vimentin	2+	2+		3+	2+	3+
Ki67	1+	1+		1+	n.d.	1+
Signaling pathway activation						
pS6	3+	3+		3+	3+	2+
pAKT T308	3+	3+		3+	3+	2+
pERK	1+	1+		3+	3+	3+
pNDRG1	1+	0		2+	2+	2+