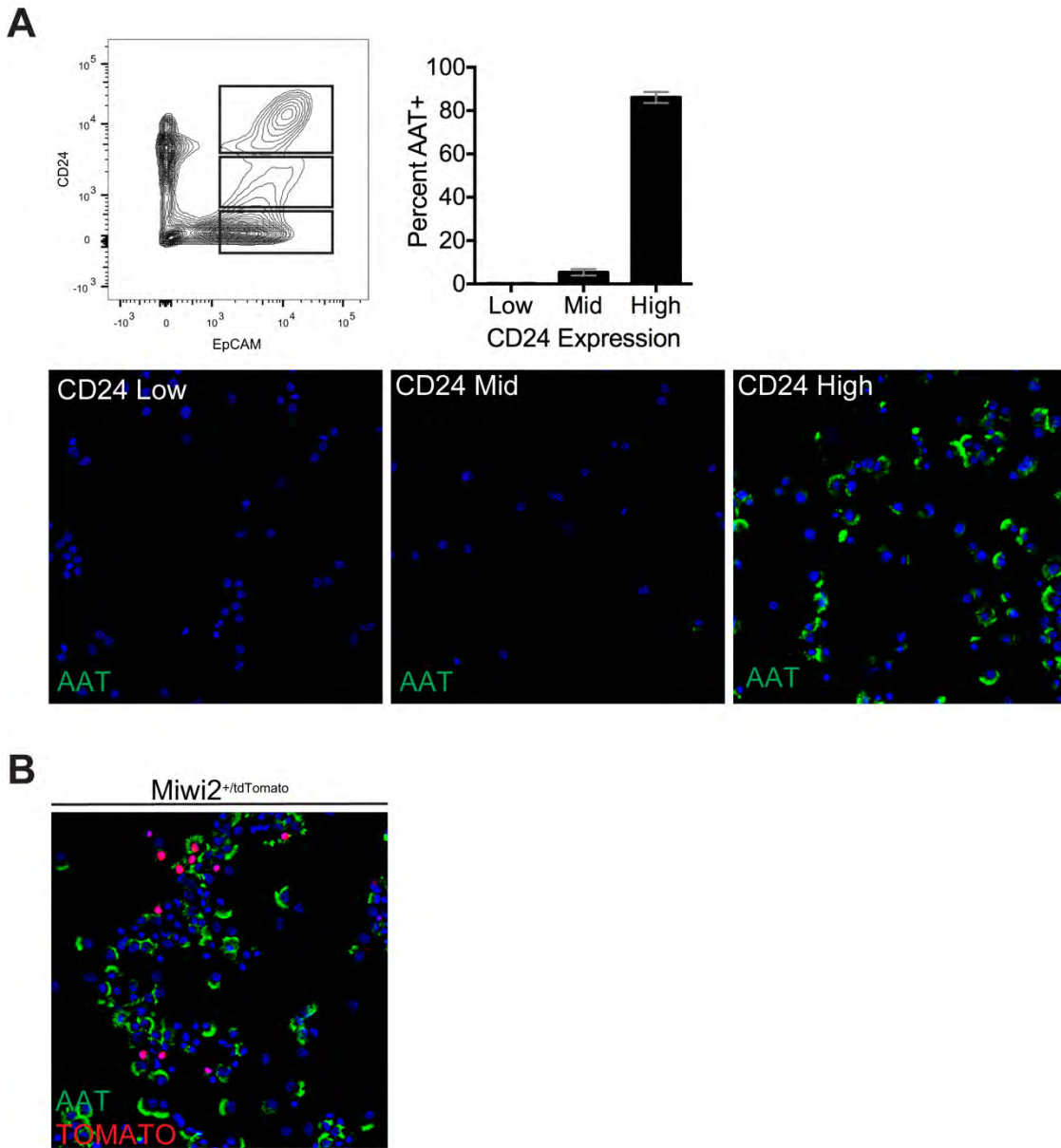


## **SUPPLEMENTARY MATERIAL**

### **MIWI2 expression defines a novel population of lung multiciliated cells**



**Figure S1: FACS sorting of EpCAM<sup>+</sup>CD24<sup>Hi</sup> isolates multiciliated cells**

**(A)** Representative figure of ciliated cell isolation from single cell lung digest of C57BL/6 mice. Three populations of EpCAM<sup>+</sup> cells were isolated based on relative expression of CD24. Cytospins of sorted cells were immunostained with acetylated alpha tubulin (green) and quantified. **(B)** replication of (A) using *Miwi2*<sup>+/tdTomato</sup> mice, and immunostained for RFP (red) and acetylated alpha tubulin (green).

# SUPPLEMENTARY TABLE 1

**Table S1: RNA-seq read statistics**

<b>File Name</b>	<b>Group</b>	<b>Total sequences</b>	<b>Quality filtered reads</b>	<b>Percent uniquely mapping</b>
Tomato1_S13_L002_R1_001	MNAC	12,893,470	12,808,488	91.53%
Tomato2_S14_L002_R1_001	MPAC	13,385,605	13,296,026	90.32%
Tomato3_S15_L002_R1_001	MNAC	13,200,798	12,992,423	91.84%
Tomato4_S16_L002_R1_001	MPAC	13,966,510	13,823,721	92.00%
Tomato5_S17_L002_R1_001	MNAC	13,571,801	13,518,920	91.78%
Tomato6_S18_L002_R1_001	MPAC	13,072,568	12,883,570	91.73%

MPAC: MIWI2- Positive Airway Cell, MNAC: MIWI2- Negative Airway Cell