

## Leptin-dependent neuronal NO signaling in the preoptic hypothalamus facilitates reproduction

Nicole Bellefontaine, Konstantina Chachlaki, Jyoti Parkash, Charlotte Vanacker, William Colledge, Xavier d'Anglemont de Tassigny, John Garthwaite, Sebastien G. Bouret, Vincent Prevot

*J Clin Invest.* 2014;**124**(8):3678-3678. <https://doi.org/10.1172/JCI77652>.

### Erratum

Original citation: *J Clin Invest.* 2014;**124**(6):2550–2559. doi:10.1172/JCI65928. Citation for this erratum: *J Clin Invest.* 2014;**124**(8):3678. doi:10.1172/JCI77652. During the preparation of this manuscript, incorrect units were entered for the y axis label of Figure 6C. The correct figure part is below. The JCI regrets the error.

**Find the latest version:**

<https://jci.me/77652/pdf>



# Erratum

## Leptin-dependent neuronal NO signaling in the preoptic hypothalamus facilitates reproduction

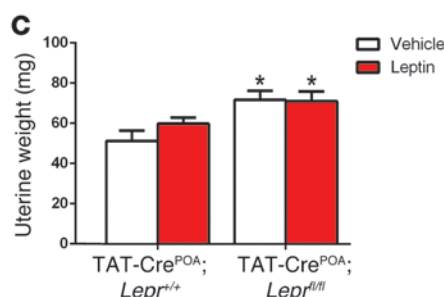
Nicole Bellefontaine, Konstantina Chachlaki, Jyoti Parkash, Charlotte Vanacker, William Colledge, Xavier d'Anglemont de Tassigny, John Garthwaite, Sebastien G. Bouret, and Vincent Prevot

Original citation: *J Clin Invest*. 2014;124(6):2550–2559. doi:10.1172/JCI65928.

Citation for this erratum: *J Clin Invest*. 2014;124(8):3678. doi:10.1172/JCI77652.

During the preparation of this manuscript, incorrect units were entered for the *y* axis label of Figure 6C. The correct figure part is below.

The *JCI* regrets the error.



## Clinical Research Scholar Career Development Training Opportunity



Clinical & Translational Science Collaborative

The CTSC KL2 seeks outstanding candidates to fill Clinical Research (CR) Scholar positions available in July 2015. The training program is a component of the Cleveland CTSC and is funded by the NIH. CR Scholars will embark on a 4-year program of intensive training in interdisciplinary team-based, patient-oriented research, combining a novel educational program with mentored research experiences.

### Qualified candidates

- Hold an M.D., a Ph.D., a D.D.S., a Pharm.D., a Psy.D. or an equivalent degree
- Have demonstrated a keen interest in clinical research
- Have expertise relevant to clinical research
- Have an appointment in one of the Departments in the University or medical centers
- Are U.S. citizens or have permanent resident status

Successful candidates will receive a CWRU appointment, with salary and benefits commensurate with prior experience and qualifications, research stipend, tuition benefits, and access to a multidisciplinary pool of highly qualified mentors who will guide their research projects.

Interested applicants should contact Beth Spyke, MPA, for information and application instructions at: [spykeb@ccf.org](mailto:spykeb@ccf.org); 216-444-2702 or visit: <http://casemed.case.edu/ctsc/education/kl2/>.

For more information about the CTSC visit <http://casemed.case.edu/ctsc/>.



Applications will be accepted between 7/1/14 - 10/27/14

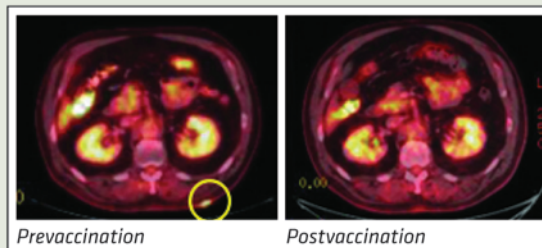


High-profile publications in:

## Clinical Medicine

Melanoma immunotherapy using mature DCs expressing the constitutive proteasome

[jci.org/articles/view/67544](http://jci.org/articles/view/67544)



Metabolic response to sodium-glucose cotransporter 2 inhibition in type 2 diabetic patients  
[jci.org/articles/view/72227](http://jci.org/articles/view/72227)

Essential amino acid supplementation in patients following total knee arthroplasty  
[jci.org/articles/view/70160](http://jci.org/articles/view/70160)