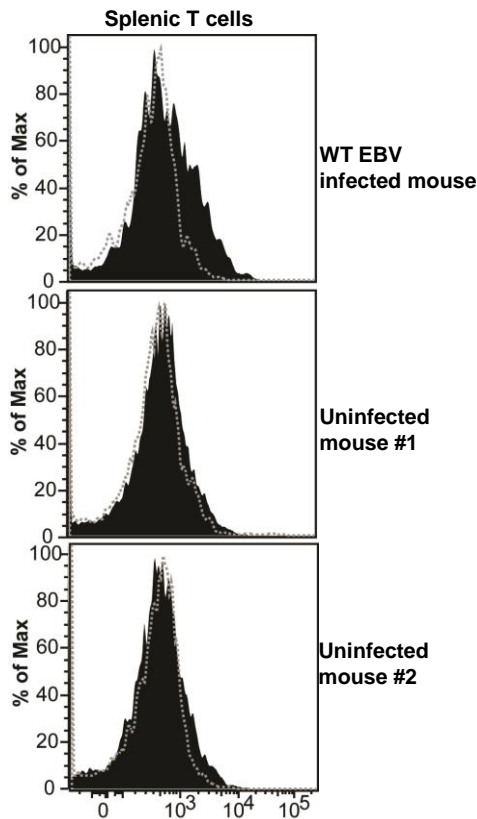
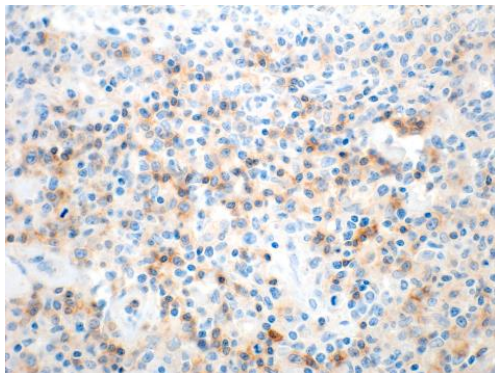


Supplemental figure 1



**Supplemental figure 1. CD40L expressed by T cells in EBV infected and uninfected cord blood injected NSG mice.** Cells isolated from spleens of mice injected with uninfected or EBV-infected cord blood were stained with antibodies specific for human CD45, CD3, CD40L or isotype matched negative controls and analyzed by flow cytometry. Samples were gated on lymphocytic cells expressing human CD45 and CD3. Filled histograms show staining for CD40L, in comparison to staining of the same population of cells by the isotype control (dashed histograms).

## Supplemental figure 2



**Supplemental figure 2. CD4+ T cells infiltrate some EBV+ human DLBCLs.** An EBV+ non-germinal center, AIDS-related human DLBCL was stained with CD4 antibody (magnification was 60X). This tumor had no detectable LMP1 staining (data not shown). Approximately 20% of the cells in the tumor stained positive for the CD4 T cell marker.

Clonality	Kappa	Lambda	Polyclonal
<b>LMP1-KO tumors</b>	6	1	9
<b>WT tumors</b>	4	1	3

**Supplemental Table 1:** 16 LMP1-KO infected tumors, and 8 WT virus-infected tumors, were stained with Kappa or lambda light chain specific antibodies. The number of tumors staining with primarily Kappa, primarily lambda or both kappa and lambda antibodies (polyclonal) is shown.