

Supplementary Figure 1:

Representative FACS plots for CD11b/CD27 or MHC class I specific inhibitory receptors stainings are shown for NK cells infiltrating RMA and RMA-S tumors.

Supplementary Figure 2: (A-B) Ratios of Tregs or MDSCs to NK cells were calculated in RMA or RMA-S derived tumors. NK cells were gated as viable-CD3⁺CD19⁻Ter119⁻NKp46⁺ cells. Tregs were gated as viable-CD3⁺CD19⁻Ter119⁻NKp46⁻CD4⁺FoxP3⁺ cells and MDSCs were gated as viable-CD3⁺CD19⁻Ter119⁻NKp46⁻CD11b⁺ cells. Several repetitions of each experiment are shown. Statistical analyses were performed with the two-tailed unpaired Student's *t*-test.

Analysis of pooled results in panel A or in panel B revealed no statistically significant differences.

Supplementary Figure 3:

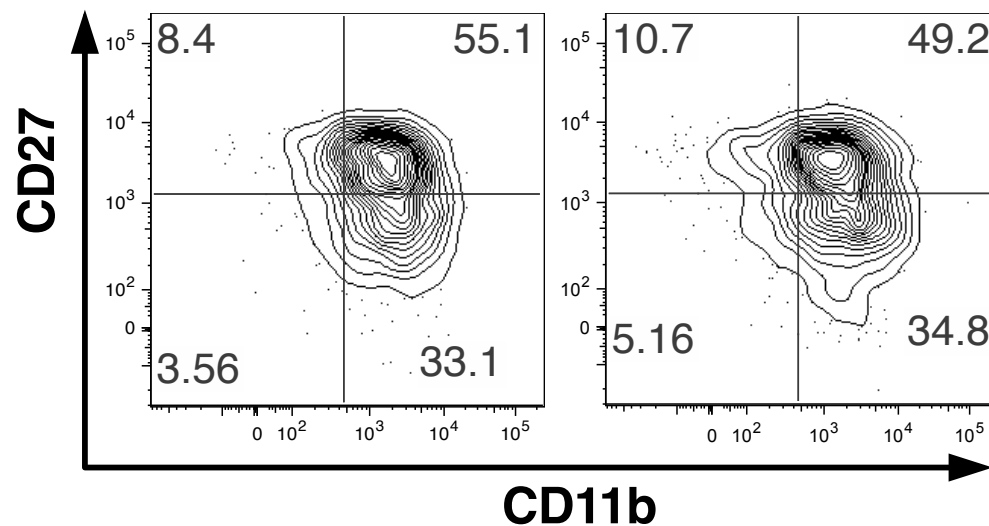
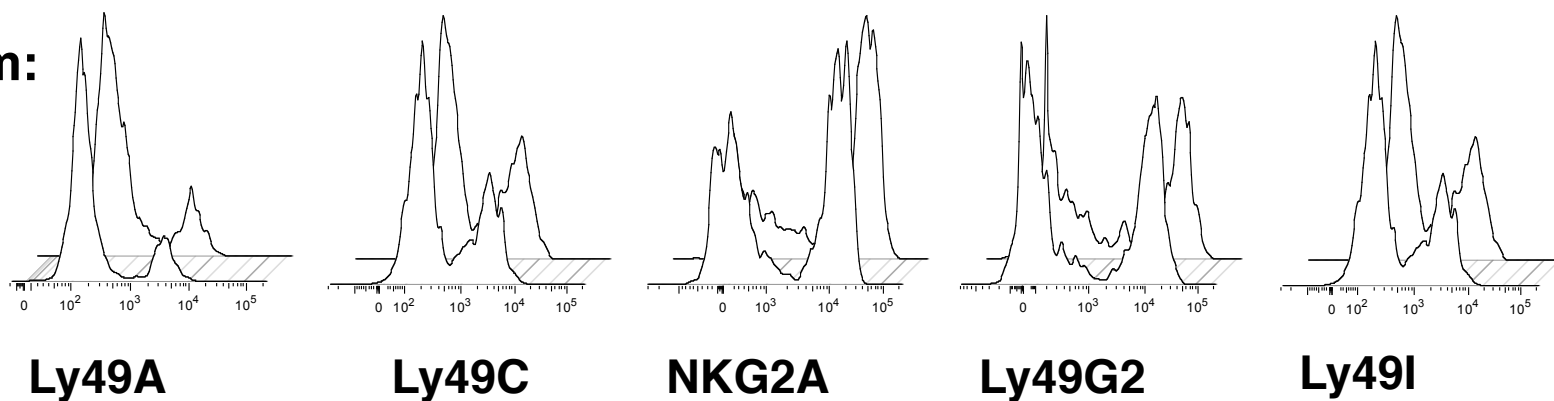
Active TGF- β 1 protein was detected by ELISA in the tumor bed (A) or in the serum (B) of RMA or RMA-S tumor bearing mice.

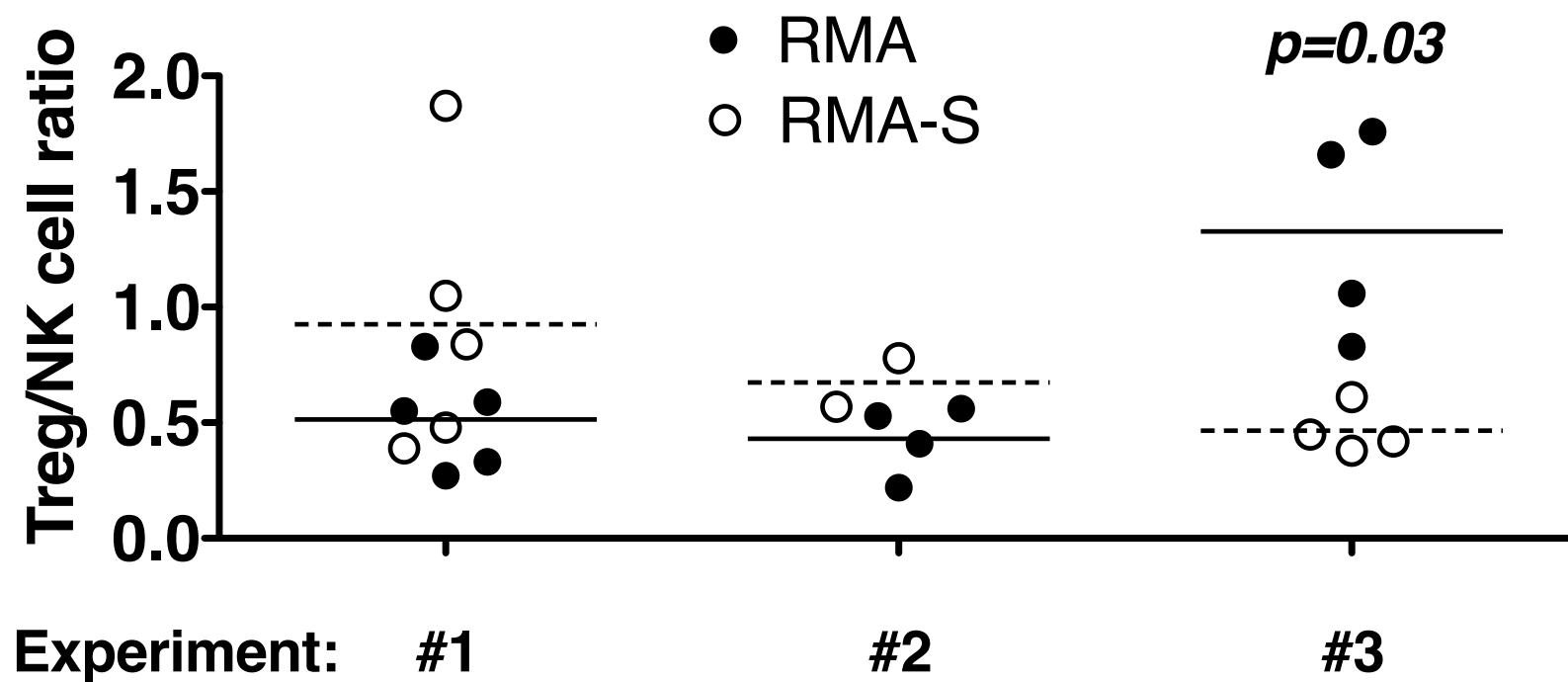
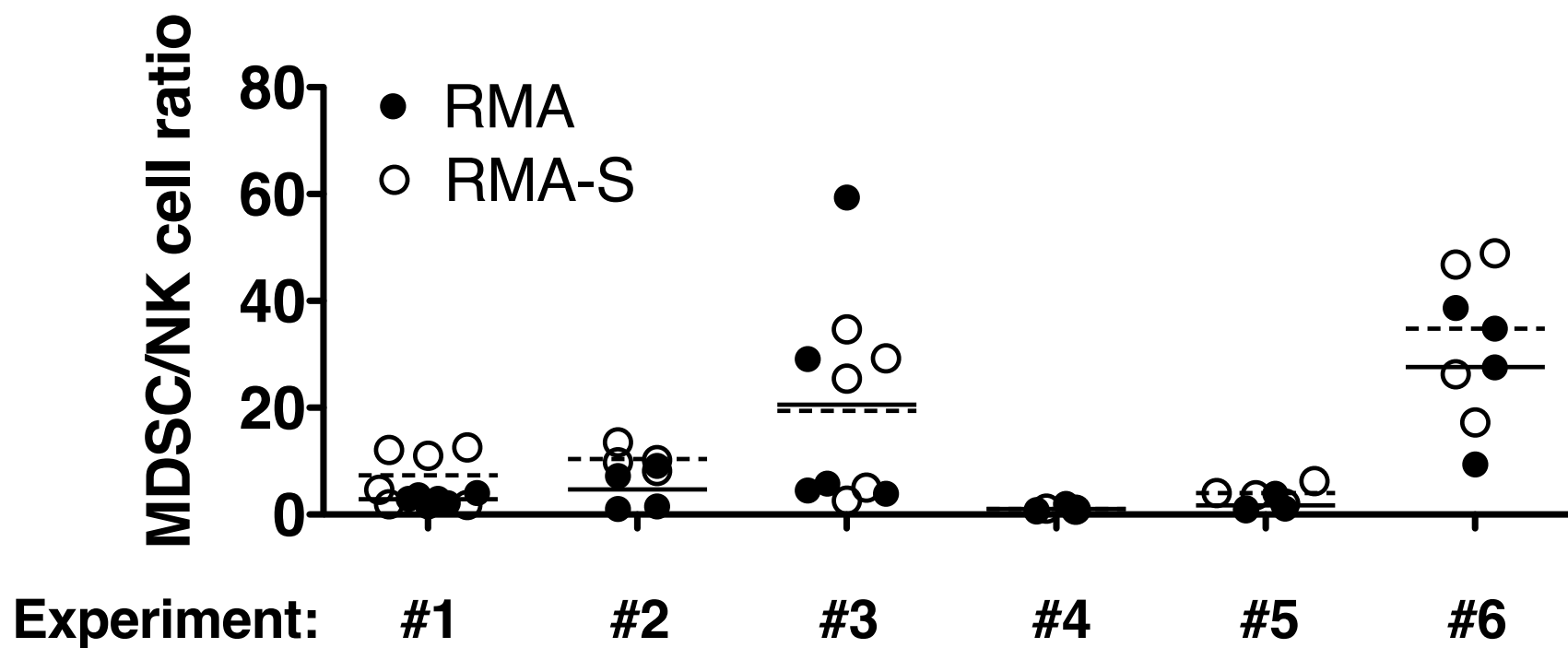
Supplementary Material

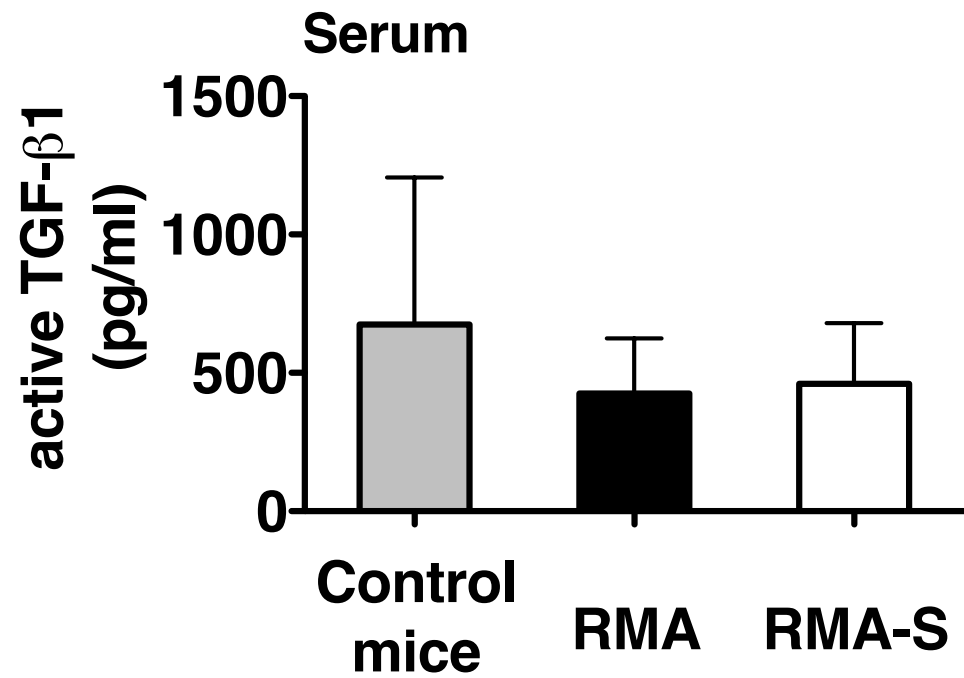
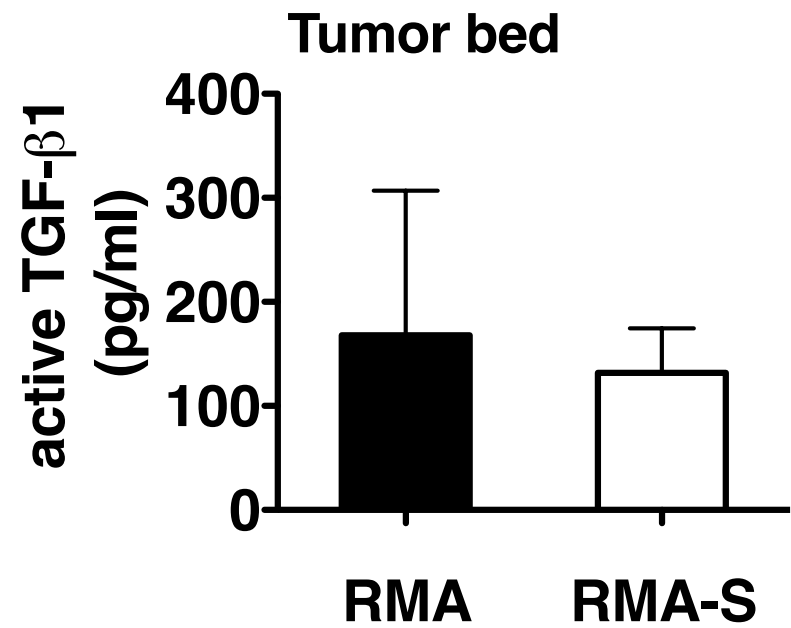
Supplementary Table 1. List of primers used for qPCR analysis

	Forward	Reverse
18S	5'- GTCTGTGATGCCCTTAG ATG-3'	5'- AGCTTATGACCCGCACTT AC-3'
β-actin	5'- AGAGGGAAATCGTGCGT GAC-3'	5'- CAATAGTGATGACCTGGC CGT-3'
GAPDH	5'- TGTGTCCGTCGTGGATC TGA-3'	5'- TTGCTGTTGAAGTCGCAG GAG-3'
IL-10	5'- CACTGCCTTGCTCTTATT TTCACA-3'	5'- CCCTGGGTGAGAAGCTG AAG-3'
IL-12p40	5'- GGAAGCACGGCAGCAG	5'- AACTTGAGGGAGAAAGTA

	AATA-3'	GGAATGG-3'
IL-18	5'- CAGGCCTGACATCTTCT GCAA-3'	5'- TCTGACATGGCAGCCATT GT-3'
TGF-β	5'- CAATTCCTGGCGTTACC T-3'	5'- GTATTCCGTCTCCTTGGT T-3'

A**NK cells from:****RMA****RMA-S****B****NK cells from:****RMA**
RMA-S**Supplementary Figure 1**

A**B**



Supplementary Figure 3