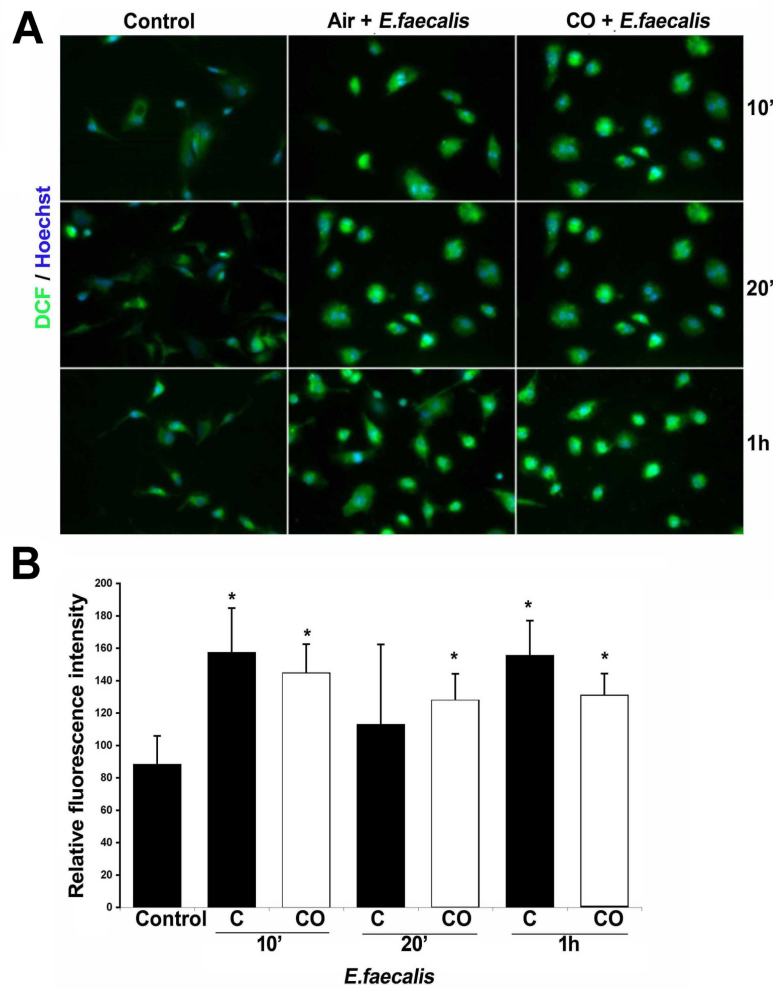


**Figure S1. IL-1β ELISA expression in bacteria treated bone marrow-derived macrophages (BMDM).**  
**(A).** IL-1β immunoblot of lysates from BMDM isolated from *Hmox1*<sup>+/+</sup> and *Hmox1*<sup>-/-</sup> mice treated with *Salmonella* typhimurium (10<sup>5</sup>cfu/ml) for 10 h. Results represent mean ± SD from 3 independent experiments in duplicate. **(B).** ELISA of IL-1β in supernatants from BMDM infected with *E. faecalis* (10<sup>6</sup>cfu/ml) for 4 hours followed by treatment with biliverdin (BV, 50μM) for 6h. Data represent 3 independent experiments in triplicate.

## Supplementary Figure 2



**Figure S2. Effects of CO on macrophage reactive oxygen species (ROS) generation (A-B).** BMDM were infected with *E. faecalis* ( $10^6$  CFU/ml) for 10h followed by treatment with CO for 10 min to 1h. Representative pictures of ROS generation measured by dichlorofluorescein (DCF) fluorescence dye in the indicated treatment groups are shown in A with quantitation of the data shown in B. Results are mean $\pm$ SD of 4-6 plates \*  $P < 0.02$  vs Control.