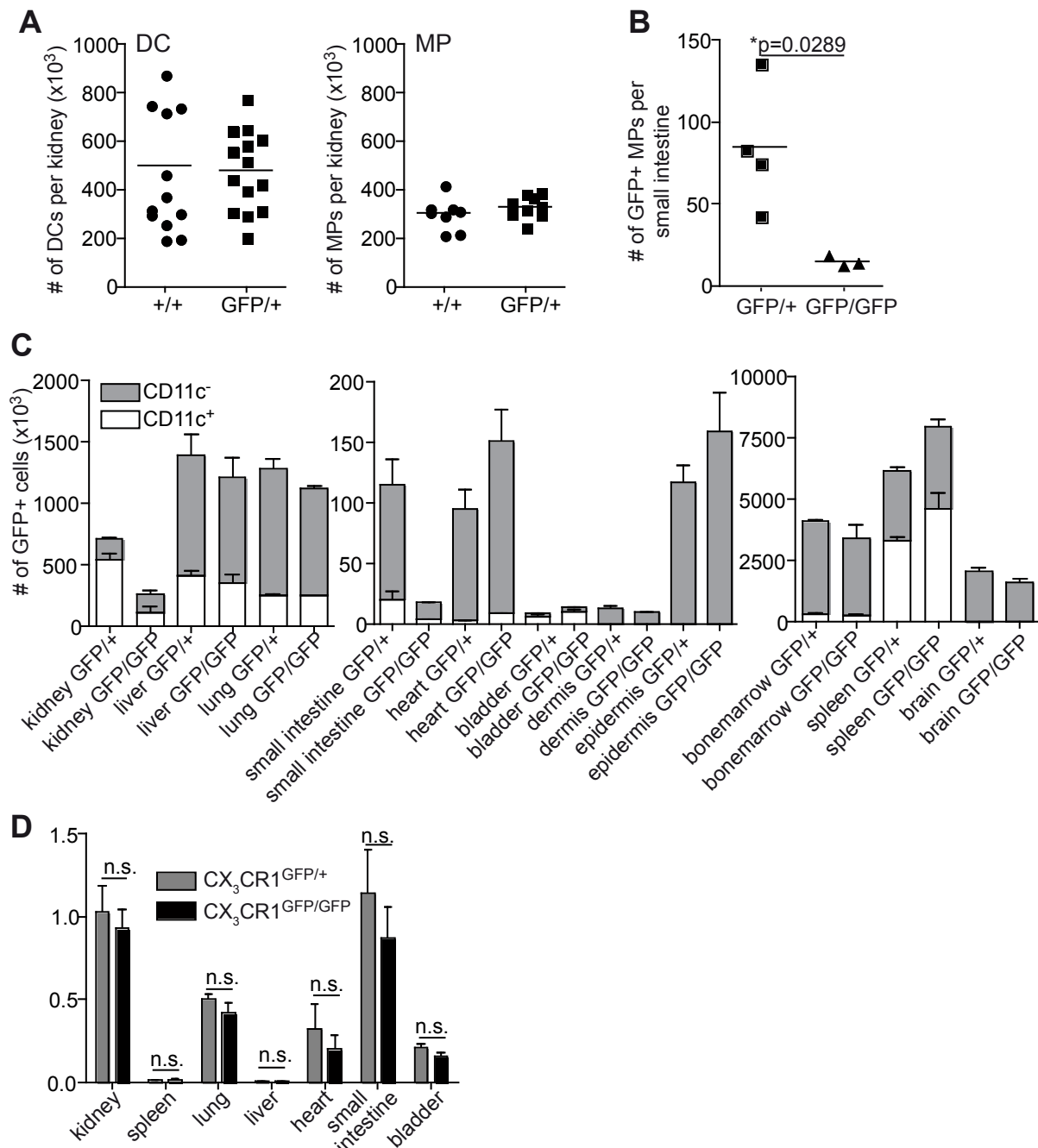
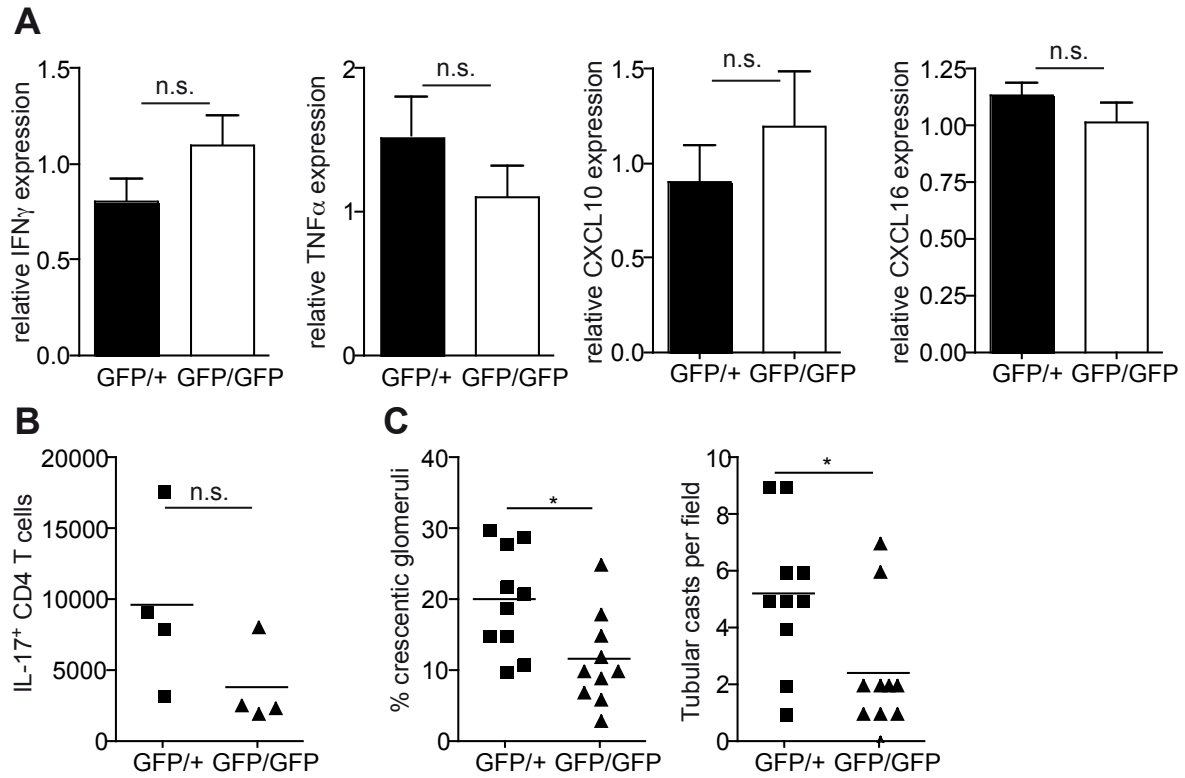


Supplemental Figure 1: (A, B) Proportions of Dendritic Cells (DCs), Macrophages (MPs), T cells, NK cells, Mast cells and other cells amongst GFP⁺ cells in healthy (A) and 10-day-nephritic (B) CX₃CR1^{GFP/+} (left panels) mice and the remaining population in CX₃CR1^{GFP/GFP} mice (right panels, normalized to cell numbers in CX₃CR1^{GFP/+} mice). **(C)** GFP expression by total CD45⁺ MHC-II⁺ CD11c⁺ cells in CX₃CR1^{GFP/+} and CX₃CR1^{GFP/GFP} mice (solid grey: wt control). **(D, E)** Gating strategy used throughout the study for GFP⁺ DCs and MPs (D) and total CD4⁺ T cells and DCs/MPs (E). **(F)** Representative FACS stainings for IFN γ ⁺ CD4⁺ T cells (right, gated on CD4⁺ T cells as in D, E) and TNF α ⁺ DCs and MPs (gated on CD45⁺ MHC-II⁺ cells) isolated from 10-day-nephritic mice.



Supplemental Figure 2: (A) Absolute numbers of DCs and MPs in CX₃CR1^{+/+} and CX₃CR1^{GFP/+} mice. Results are combined from 3 individual experiments with 4-5 mice per group. **(B)** Absolute numbers of GFP⁺ MPs in the small intestine of CX₃CR1^{GFP/+} and CX₃CR1^{GFP/GFP} mice. **(C)** Absolute numbers of GFP⁺CD11c⁻ and GFP⁺CD11c⁺ cells per organ, (bonemarrow per leg, dermis and epidermis per two ears). **(D)** Relative CX₃CL1 expression in different organs of CX₃CR1^{GFP/+} and CX₃CR1^{GFP/GFP} mice normalized to expression in the kidneys of CX₃CR1^{GFP/+}. Results are representative for 2 individual experiments with 3-4 mice per group. Statistical significance was tested with the unpaired student's t-test (A, B) or one-way analysis of variances (one-way ANOVA) with Bonferroni multiple-comparison test (D).



Supplemental Figure 3: (A) Relative expression of IFN γ , TNF α , CXCL10 and CXCL16 in the kidneys of CX₃CR1^{GFP/+} (GFP/+) and CX₃CR1^{GFP/GFP} (GFP/GFP) mice 24 hours after immunization with NTS. **(B)** Absolut number of IL-17 producing CD4 T cells per kidney in CX₃CR1^{GFP/+} (GFP/+) and CX₃CR1^{GFP/GFP} (GFP/GFP) mice 10 days after immunization with NTS **(C)** Proportion of crescentic glomeruli (left) and tubular casts (right) in CX₃CR1^{GFP/+} (GFP/+) and CX₃CR1^{GFP/GFP} (GFP/GFP) mice on day 10 after NTN induction. Statistical analysis was performed using the unpaired Student's t-test (A, B) or the Mann-Whitney test (B).