

SUPPLEMENTAL FIGURES LEGENDS:

Figure S1. Gene expression studies demonstrate differential expression of EREG, but not other EGF-like ligands in the mouse model of CAC

Differential expression analysis between mouse models of CAC and sporadic CRC was performed by high density microarrays, as described in materials and methods. Results are shown for individual EGF-like ligands.

Figure S2. Ereg^{-/-} mice show a less prominent difference in colitis after recovery from the immediate ulcerative damage.

(A and B) Experimental colitis was induced by three cycles of DSS (2.5%) in wild-type controls and *Ereg^{-/-}* mice, and inflammation was endoscopically assessed at day 60. Data are from one out of two experiments and represent mean values \pm SD ($n = 5$ per group).

Table S1.

List of differentially expressed genes per subgroup with the greatest up or down.

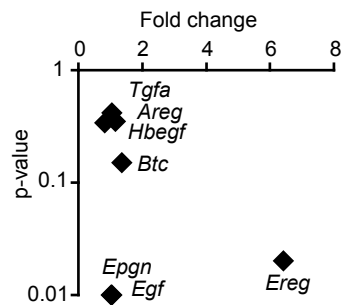


Figure S1.

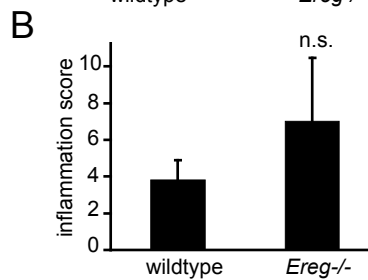
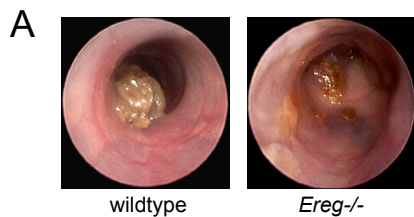


Figure S2.

Differentially expressed genes per subgroup with the greatest up or down

upregulated

downregulated

sporadic CRC vs. control		CAC vs. control		sporadic CRC vs. control		CAC vs. control	
Gene Symbol	Fold change	Gene Symbol	Fold change	Gene Symbol	Fold change	Gene Symbol	Fold change
Ptn	162,44	Igl-V1	43,0	Cyp2f2	102,09	Slco2a1	7,8
Pfn2	140,07	Krt36	40,0	Mep1b	80,11	Sectm1	7,1
Sox17	117,63	Ndg1	22,9	Atp12a	62,54	Pice1	7,1
Pycr1	111,17	Thbs1	17,8	BC018285	59,74	Sectm1	6,6
Cadps	85,85	Ereg	16,6	4631408O11Rik	51,32	D630002G06Rik	6,6
Tesc	85,76	Prss22	14,9	Sult1b1	48,72	Hba-a1	6,5
Serpina11	55,40	Tagln	11,6	Aldob	45,94	Slc4a4	5,8
Cdkn1c	44,72	Lgals2	11,1	Acta1	34,66	Slco2a1	5,8
Usp18	39,46	Ascl2	8,5	2010001M06Rik	33,19	Srr	5,6
Isl1	32,36	Ighg	8,3	Aldh1a7	26,33	Sprr2k	5,5
Bcam	31,55	Cyr61	8,1	1810010G06Rik	25,46	Cdx2	5,2
Cfi	31,01	Siva	7,8	Clca3	23,70	Al451617	4,9
Etv5	28,97	Col5a1	6,7	Cabc1	23,44	Foxo3a	4,4
Mal	28,52	Aldh1a3	6,4	Clec2h	23,17	Plekhg6	4,3
Cubn	27,10	Cyr61	6,0	Mrze	21,87	Stk17b	4,2
Mpeg1	24,68	Slc15a3	5,8	2610528A11Rik	21,85	Hoxa13	4,2
Tex15	21,49	Esam1	5,7	Saa1	20,94	Stk10	4,1
Rasl11b	21,44	Hells	5,4	Arc	20,63	2210010L05Rik	4,0
Stx1a	20,99	Mrc1	5,4	Saa1	19,40	Gpr137b	3,9
Rarb	20,74	Crem	5,4	Wfdc2	19,16	Usp53	3,9

Table S1.