

## Sequencing a mouse acute promyelocytic leukemia genome reveals genetic events relevant for disease progression

Lukas D. Wartman, David E. Larson, Zhifu Xiang, Li Ding, Ken Chen, Ling Lin, Patrick Cahan, Jeffery M. Kico, John S. Welch, Cheng Li, Jacqueline E. Payton, Geoffrey L. Uy, Nobish Varghese, Rhonda E. Ries, Mieke Hooock, Daniel C. Koboldt, Michael D. McLellan, Heather Schmidt, Robert S. Fulton, Rachel M. Abbott, Lisa Cook, Sean D. McGrath, Xian Fan, Adam F. Dukes, Tammi Vickery, Joelle Kalicki, Tamara L. Lamprecht, Timothy A. Graubert, Michael H. Tomasson, Elaine R. Mardis, Richard K. Wilson, Timothy J. Ley

*J Clin Invest.* 2011;121(4):1445-1455. <https://doi.org/10.1172/JCI45284>.

### Technical Advance

Acute promyelocytic leukemia (APL) is a subtype of acute myeloid leukemia (AML). It is characterized by the t(15;17) (q22;q11.2) chromosomal translocation that creates the promyelocytic leukemia–retinoic acid receptor  $\alpha$  (*PML-RARA*) fusion oncogene. Although this fusion oncogene is known to initiate APL in mice, other cooperating mutations, as yet ill defined, are important for disease pathogenesis. To identify these, we used a mouse model of APL, whereby *PML-RARA* expressed in myeloid cells leads to a myeloproliferative disease that ultimately evolves into APL. Sequencing of a mouse APL genome revealed 3 somatic, nonsynonymous mutations relevant to APL pathogenesis, of which 1 (*Jak1* V657F) was found to be recurrent in other affected mice. This mutation was identical to the *JAK1* V658F mutation previously found in human APL and acute lymphoblastic leukemia samples. Further analysis showed that *JAK1* V658F cooperated in vivo with *PML-RARA*, causing a rapidly fatal leukemia in mice. We also discovered a somatic 150-kb deletion involving the lysine (K)-specific demethylase 6A (*Kdm6a*, also known as *Utx*) gene, in the mouse APL genome. Similar deletions were observed in 3 out of 14 additional mouse APL samples and 1 out of 150 human AML samples. In conclusion, whole genome sequencing of mouse cancer genomes can provide an unbiased and comprehensive approach for discovering functionally relevant mutations that are also present in human leukemias.

**Find the latest version:**

<https://jci.me/45284/pdf>





# Sequencing a mouse acute promyelocytic leukemia genome reveals genetic events relevant for disease progression

Lukas D. Wartman,<sup>1</sup> David E. Larson,<sup>2</sup> Zhifu Xiang,<sup>1</sup> Li Ding,<sup>2</sup> Ken Chen,<sup>2</sup> Ling Lin,<sup>2</sup> Patrick Cahan,<sup>1</sup> Jeffery M. Klco,<sup>3</sup> John S. Welch,<sup>1</sup> Cheng Li,<sup>1</sup> Jacqueline E. Payton,<sup>3</sup> Geoffrey L. Uy,<sup>1</sup> Nobish Varghese,<sup>3</sup> Rhonda E. Ries,<sup>1</sup> Mieke Hoock,<sup>1</sup> Daniel C. Koboldt,<sup>2</sup> Michael D. McLellan,<sup>2</sup> Heather Schmidt,<sup>2</sup> Robert S. Fulton,<sup>2</sup> Rachel M. Abbott,<sup>2</sup> Lisa Cook,<sup>2</sup> Sean D. McGrath,<sup>2</sup> Xian Fan,<sup>2</sup> Adam F. Dukes,<sup>2</sup> Tammi Vickery,<sup>2</sup> Joelle Kalicki,<sup>2</sup> Tamara L. Lamprecht,<sup>1</sup> Timothy A. Graubert,<sup>1</sup> Michael H. Tomasson,<sup>1</sup> Elaine R. Mardis,<sup>2</sup> Richard K. Wilson,<sup>2</sup> and Timothy J. Ley<sup>1</sup>

<sup>1</sup>Departments of Internal Medicine and Genetics, Division of Oncology, Stem Cell Biology Section, Washington University School of Medicine, Siteman Cancer Center, St. Louis, Missouri, USA. <sup>2</sup>The Genome Institute at Washington University, Washington University School of Medicine, St. Louis, Missouri, USA. <sup>3</sup>Department of Pathology and Immunology, Washington University, St. Louis, Missouri, USA.

Acute promyelocytic leukemia (APL) is a subtype of acute myeloid leukemia (AML). It is characterized by the t(15;17)(q22;q11.2) chromosomal translocation that creates the promyelocytic leukemia-retinoic acid receptor  $\alpha$  (*PML-RARA*) fusion oncogene. Although this fusion oncogene is known to initiate APL in mice, other cooperating mutations, as yet ill defined, are important for disease pathogenesis. To identify these, we used a mouse model of APL, whereby *PML-RARA* expressed in myeloid cells leads to a myeloproliferative disease that ultimately evolves into APL. Sequencing of a mouse APL genome revealed 3 somatic, nonsynonymous mutations relevant to APL pathogenesis, of which 1 (*Jak1* V657F) was found to be recurrent in other affected mice. This mutation was identical to the *JAK1* V658F mutation previously found in human APL and acute lymphoblastic leukemia samples. Further analysis showed that *JAK1* V658F cooperated *in vivo* with *PML-RARA*, causing a rapidly fatal leukemia in mice. We also discovered a somatic 150-kb deletion involving the lysine (K)-specific demethylase 6A (*Kdm6a*, also known as *Utx*) gene, in the mouse APL genome. Similar deletions were observed in 3 out of 14 additional mouse APL samples and 1 out of 150 human AML samples. In conclusion, whole genome sequencing of mouse cancer genomes can provide an unbiased and comprehensive approach for discovering functionally relevant mutations that are also present in human leukemias.

## Introduction

Recent studies have shown that whole genome sequencing is a valid, unbiased approach that can identify novel mutations and structural variants that may be important drivers of acute myeloid leukemia (AML) (1–3). However, human genomes have 3–4 million sequence variants per individual, and because cancers, such as AML, arise from individual HSCs that probably contain a large number of background mutations, it remains a difficult task to identify the somatic variants that are relevant for disease pathogenesis (1, 2). This task could be simplified considerably by sequencing the genomes of tumors arising in inbred strains of mouse cancer models, since the coverage requirements for detecting somatic mutations are predicted to be considerably less than those for sequencing outbred genomes, and the sequencing of a paired normal sample should not be absolutely required. In this study, we used a mouse model of APL to test this idea.

Acute promyelocytic leukemia (APL) (FAB M3 AML) is a subtype of AML characterized by the t(15;17)(q22;q11.2) translocation that creates the fusion oncogene, promyelocytic leukemia-retinoic acid receptor  $\alpha$  (*PML-RARA*). Our laboratory

and others have previously modeled APL in the mouse, in an effort to understand the genetic events that lead to leukemia (4–7). In our knockin mouse model, a human *PML-RARA* cDNA was targeted to the 5' untranslated region of the mouse cathepsin G (*Ctsg*) gene on chromosome 14 (referred to as mCG-PR mice) in an embryonic stem cell line that was derived from 129/SvJ mice (6). *PML-RARA* is expressed in the myeloid progenitor cells of these mice, and they develop a myeloproliferative disease that evolves into acute leukemia, with promyelocytic features after a latent period of 7–18 months. In the present study, F1 129/SvJ  $\times$  C57BL/6 (B6) mCG-PR mice were backcrossed onto the B6/Taconic background (B6/T) for 10 generations, before establishing a large cohort of at-risk mCG-PR mice with sample banking. About 60% of the mCG-PR mice in the B6/T develop a disease that closely resembles APL after a long latent period, suggesting that additional progression mutations are required for APL development. Recurring, acquired chromosomal aberrations and distinct gene expression signatures are present in this and other mouse models of APL (8–10), but the spectrum of mutations required for progression are not yet known. To identify these mutations, we sequenced a diploid (as defined by a whole genome comparative genomic hybridization (CGH) tiling array; Supplemental Figure 1; supplemental material available online with this article; doi:10.1172/JCI45284DS1) mouse APL genome, using massively parallel DNA sequencing on the Illumina platform.

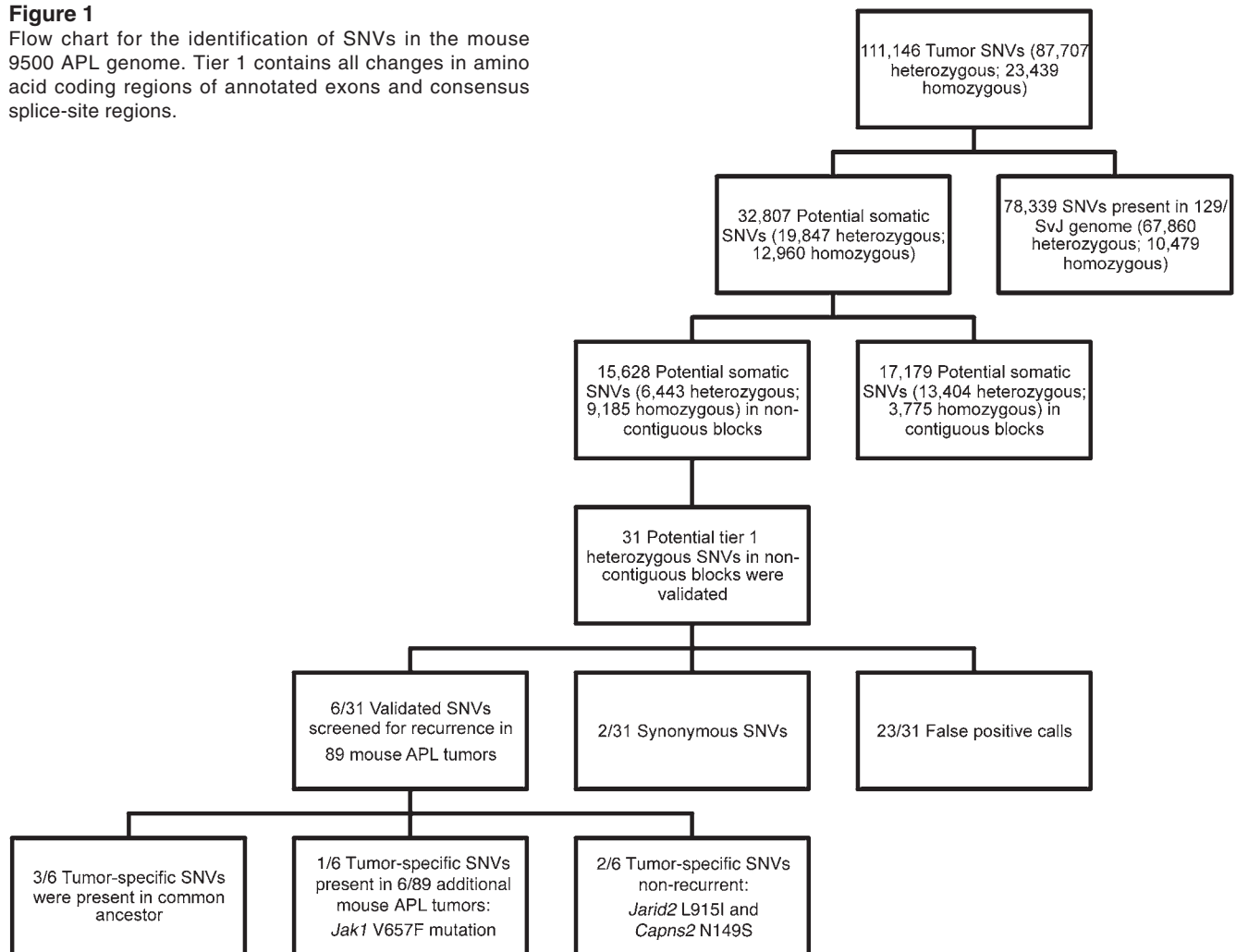
**Authorship note:** Lukas D. Wartman and David E. Larson contributed equally to this work.

**Conflict of interest:** The authors have declared that no conflict of interest exists.

**Citation for this article:** *J Clin Invest.* 2011;121(4):1445–1455. doi:10.1172/JCI45284.

**Figure 1**

Flow chart for the identification of SNVs in the mouse 9500 APL genome. Tier 1 contains all changes in amino acid coding regions of annotated exons and consensus splice-site regions.



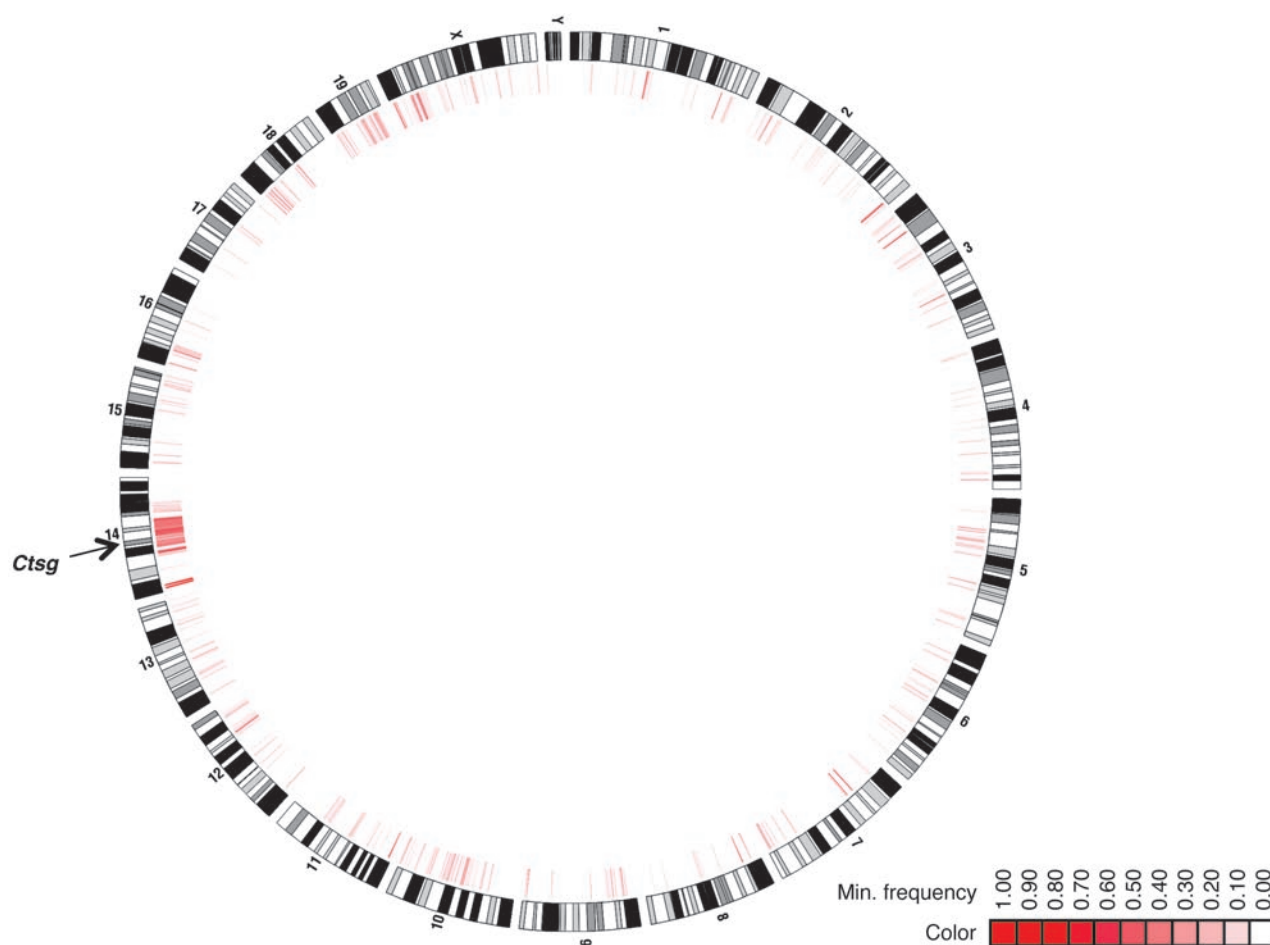
## Results

*Next-generation sequencing and identification of point mutations in a mouse APL genome.* The sequenced mouse APL genome (tumor 9500) was derived from the leukemic spleen of a male mouse (mouse 9500) that developed leukemia after 335 days; AML in this mouse was characterized by the typical leukocytosis ( $>100$  K/ $\mu$ l), splenomegaly (890 mg), and aberrant coexpression of the cell surface markers Gr-1 and c-kit on the splenic tumor cells (splenocytes were 49% Gr-1<sup>+</sup>/c-kit<sup>+</sup>). Residual 129/SvJ genome segments were predicted to account for a very small fraction of the tumor genome, based on a comparison of tumor copy number variants (defined by CGH data) to defined 129/SvJ copy number variants (Supplemental Figure 2 and ref. 11).

We created 2 Illumina paired-end libraries from tumor DNA (insert sizes of 300–350 bp and 550–600 bp) and generated 59.64 billion bp of sequence with 3 full Illumina GAII-X sequencing runs; the reads that were successfully mapped generated 15.564 $\times$  haploid coverage. Surprisingly, when compared with the mouse B6/Jackson reference genome, the tumor 9500 sequence data predicted 87,778 heterozygous single nucleotide variants (SNVs) and 23,439 homozygous SNVs (Figure 1). We did not prospectively bank germline DNA from mouse 9500, since we did not anticipate significant genetic variation from the tumor sample compared with that of the mouse reference genome. Since normal mouse 9500 DNA was

not available to definitively assign the somatic status of these SNVs, we sequenced the 129/SvJ genome on the Illumina platform, using pooled DNA derived from the spleens of 6 young WT male mice, to generate 28.9 $\times$  haploid coverage (D.E. Larson, unpublished observations). 4,951,238 SNPs were present, compared with the reference B6/Jackson genome. Using this data, we determined that 0.96% of the tumor 9500 genome was derived from residual 129/SvJ sequence after 10 backcrosses to B6/T mice (Figure 2; see Methods for calculations). After filtering out the 129/SvJ SNPs, only 32,807 potentially somatic, heterozygous SNVs remained. 17,179 of the remaining sequence variants in the tumor genome occurred in contiguous blocks of sequence that we attributed to genetic drift that occurred between the 129/SvJ-derived ES cell line used to generate the mCG-PR mouse line (created in 1994) and the cells obtained from the control 129/SvJ WT mice that were used for sequencing the 129/SvJ genome (obtained in 2009 from The Jackson Laboratory). Some blocks of variants were also probably caused by genetic drift between the B6/T mice used for the backcrossing of the mCG-PR mice and the B6/Jackson mice used to sequence the reference genome.

To remove these background variants, we excluded all blocks of 4 or more SNVs (both heterozygous and homozygous) located within 40,000 bp of each other (Supplemental Table 1). 361 of the potential tier 1 somatic SNVs (tier 1 variants are in coding sequences,

**Figure 2**

Heat map of residual 129/SvJ SNPs by chromosomal location. A heat map was generated to show the number of SvJ/129 SNPs present in the tumor 9500 genome per 1-Mb window divided by the number total SvJ/129 SNPs present in the same 1-Mb window, aligned to the mouse chromosome ideogram. The location of cathepsin G (*CtsG*) is highlighted by an arrow. The mouse 9500 breeding strategy placed selective pressure to retain the genetically modified *CtsG* locus on chromosome 14 (the PML-RARA cDNA was knocked into the 5' untranslated region of the *CtsG* gene). The experimentally derived heat map shows a skewing of retained 129/SvJ SNPs surrounding the *CtsG* locus, as expected, with a random distribution of 129/SvJ SNPs throughout the remaining chromosomes. Min., minimum.

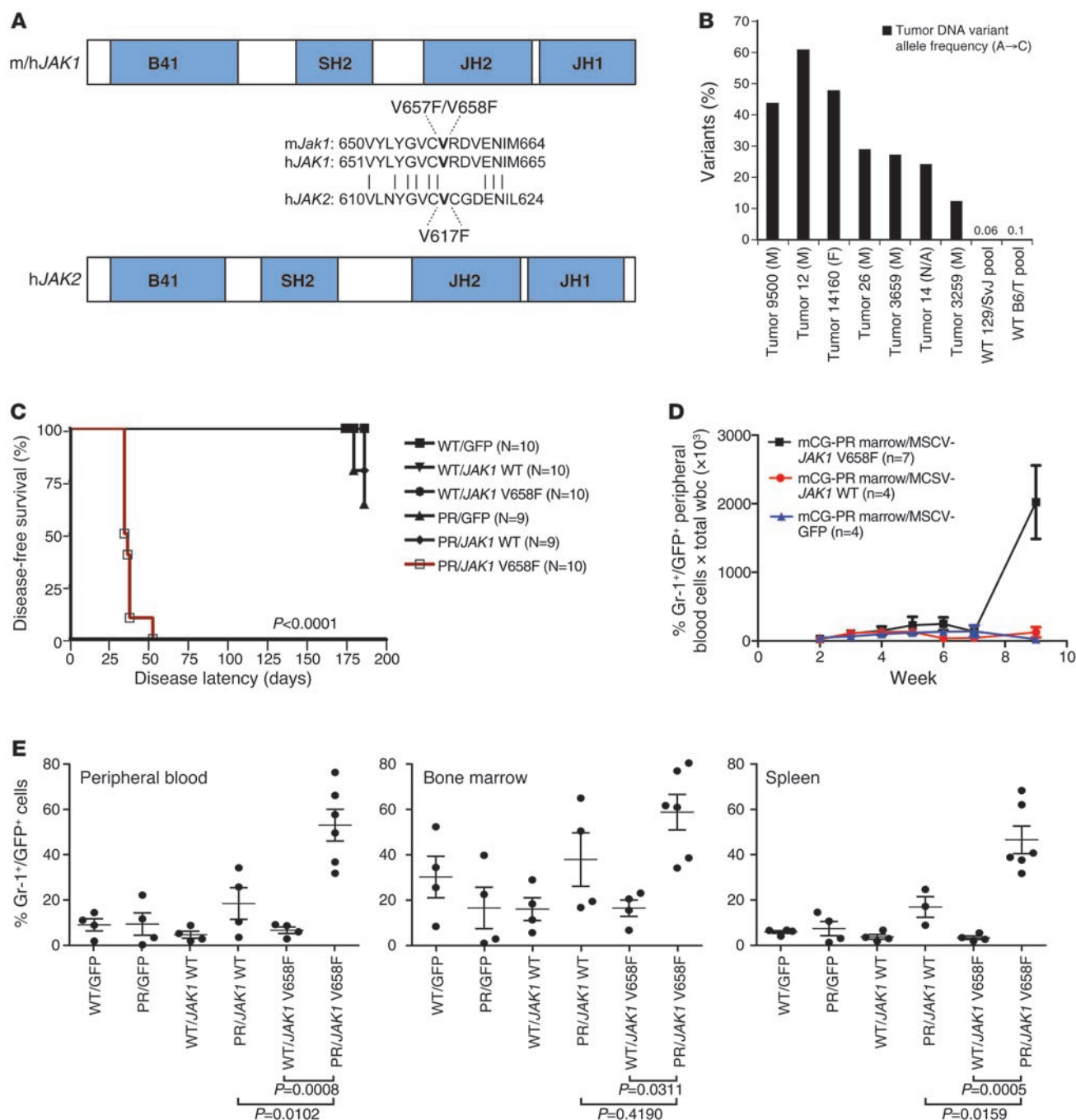
as described in ref. 2) were found in these contiguous blocks of sequence and were not considered further (Supplemental Table 2).

The remaining 31 putative tier 1 SNVs were analyzed using Sanger sequencing of PCR products made from the original tumor DNA or from B6/T spleen DNA or 129/SvJ spleen DNA as controls. Both control DNA samples were pooled from spleen DNA derived from 6 healthy young male mice. Eight out of thirty-one calls were true positives (i.e., present only in the tumor genome). Two of these mutations (*Dip2b*, C to A, A633, and *Gm6924*, G to A, G121) were synonymous and were not pursued further. The final 6 nonsynonymous mutations were screened for recurrence in 89 additional mouse APL tumor samples (all derived from the same original mouse model). Mutations in the *Jarid2* (L915I) and *Capns2* (N149S) genes occurred only in the tumor derived from mouse 9500. Four out of six of the nonsynonymous mutations were found in additional samples; 3 of these mutations (in *C6*, *Adad1*, and *Ddn1*) were found together in a tumor from a littermate of mouse 9500 and in 2 other tumors from mice that were littermates of each other and bred from the same mCG-PR father as mouse 9500. The inheritance pattern there-

fore suggests that these mutations represent spontaneous germline mutations from a common ancestor of the proband and the other affected mice and that they are unlikely to be relevant for pathogenesis. The other recurring mutation was in the pseudokinase domain of *Jak1* (V657F) and was identified in 6 other mice that were not closely related to the proband (7 out of 90 tumors = 8% of screened tumors) (Supplemental Figure 3A). We also sequenced the entire pseudokinase domain of *Jak1* in these 89 mouse APL samples and found 1 additional sample had 2 different mutations in the *Jak1* gene: G881E and N845S. Finally, we sequenced the entire *Jak1* gene in 14 out of the 89 tumors (including the sample with 2 *Jak1* mutations) and identified no additional mutations.

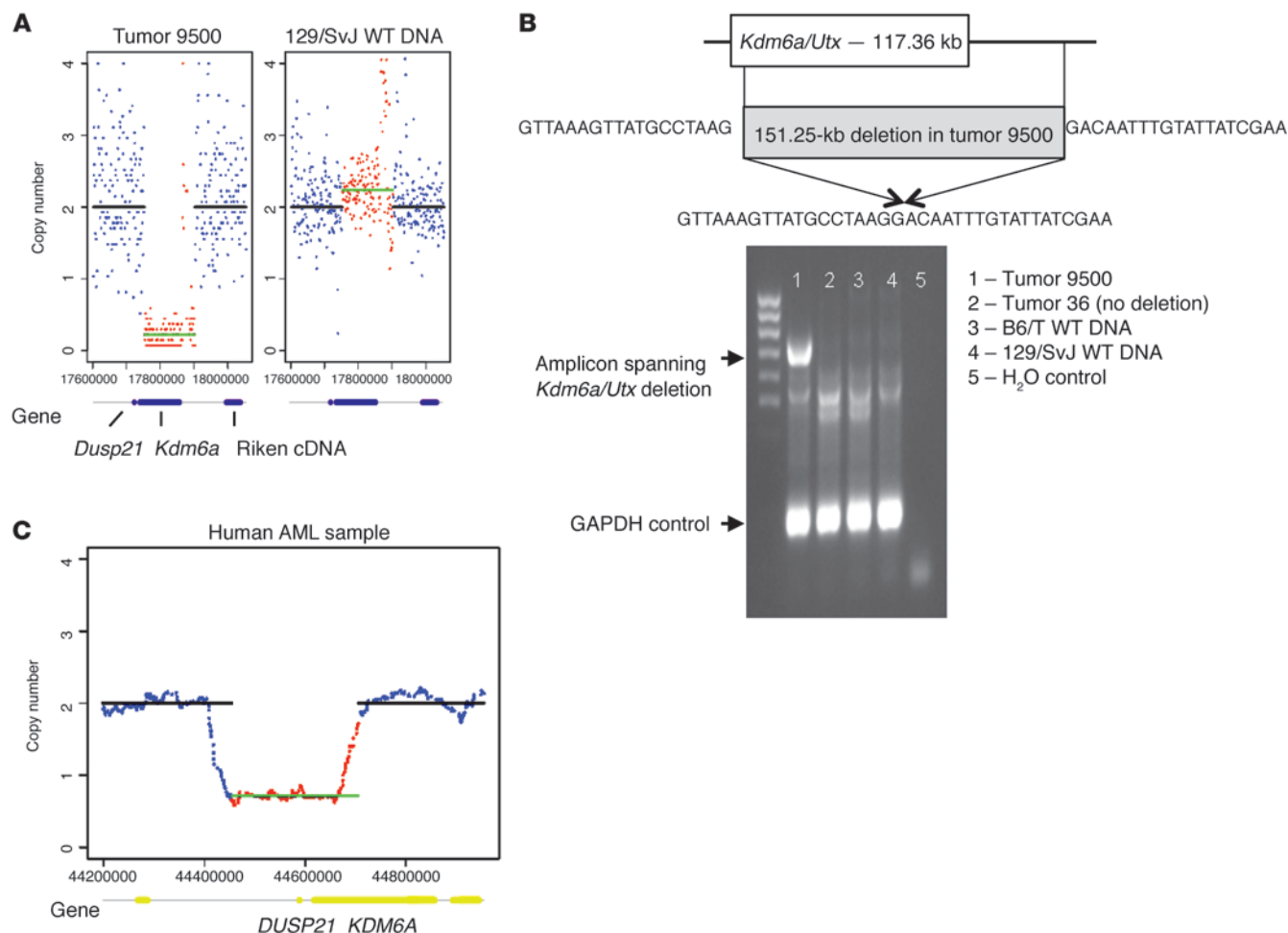
The *Jak1* V657F mutation is orthologous to the V617F mutation in human *JAK2* and is identical to a recently described activating *JAK1* pseudokinase domain mutation (V658F) found in human APL and acute lymphoblastic leukemia samples (refs. 12–15 and Figure 3A). Previous work from our group demonstrated that other gain-of-function mutations in *JAK1* (V623A and T478S) are relatively rare in human AML (16, 17).





**Figure 3**

Functional validation of the recurrent *Jak1* mutation identified in the sequenced mouse APL genome. **(A)** The mouse *Jak1* V657F (mJAK1) mutation is orthologous to the human *JAK1* V658F (hJAK1) and human *JAK2* V617F (hJAK2) mutations. B41, band 4.1 domain; SH2, src-homology domain; JH2, pseudokinase domain; JH1, kinase domain. **(B)** Mouse APL *Jak1* V657F mutation allele frequency by 454 sequencing. The variant allele frequencies of the V657F mutation from tumor 9500 and the 6 other tumors with V657F mutations are shown. On the far right are the read counts for the controls of a WT 129/SvJ DNA pool ( $n = 6$ ) and a WT B6/T DNA pool ( $n = 6$ ). F, female; M, male. **(C)** Functional validation with human *JAK1* cDNA MSCV retroviral constructs. IRES-GFP (WT/GFP) alone versus *JAK1* WT-IRES-GFP (WT/JAK1 WT) versus *JAK1* V658F (WT/JAK1 V658F) mutant-IRES-GFP retroviral constructs were transduced into WT B6/T or mCG-PR bone marrow from 6-week-old mice. The transduced marrow was transplanted into lethally irradiated WT B6/T mice. The *JAK1* V658F mutant cooperates with *PML-RARA* (PR) in a mouse model of APL and causes a fatal leukemia; a Kaplan-Meier overall survival plot is shown. This result was replicated in 2 independent experiments. **(D)** Serial flow cytometric analysis of peripheral blood shows a massive expansion of GFP<sup>+</sup>/Gr-1<sup>+</sup> cells in the mCG-PR/JAK1 V658F cohort compared with that in the other experimental cohorts and controls. Error bars are mean  $\pm$  SEM. **(E)** Flow cytometric analysis of peripheral blood, bone marrow, and spleen at the end of 1 *JAK1* functional validation experiment showed no significant expansion of GFP<sup>+</sup>/Gr-1<sup>+</sup> cells in cohorts other than mCG-PR/JAK1 V658F mice. Each symbol represents an individual mouse. Error bars are mean  $\pm$  SEM.



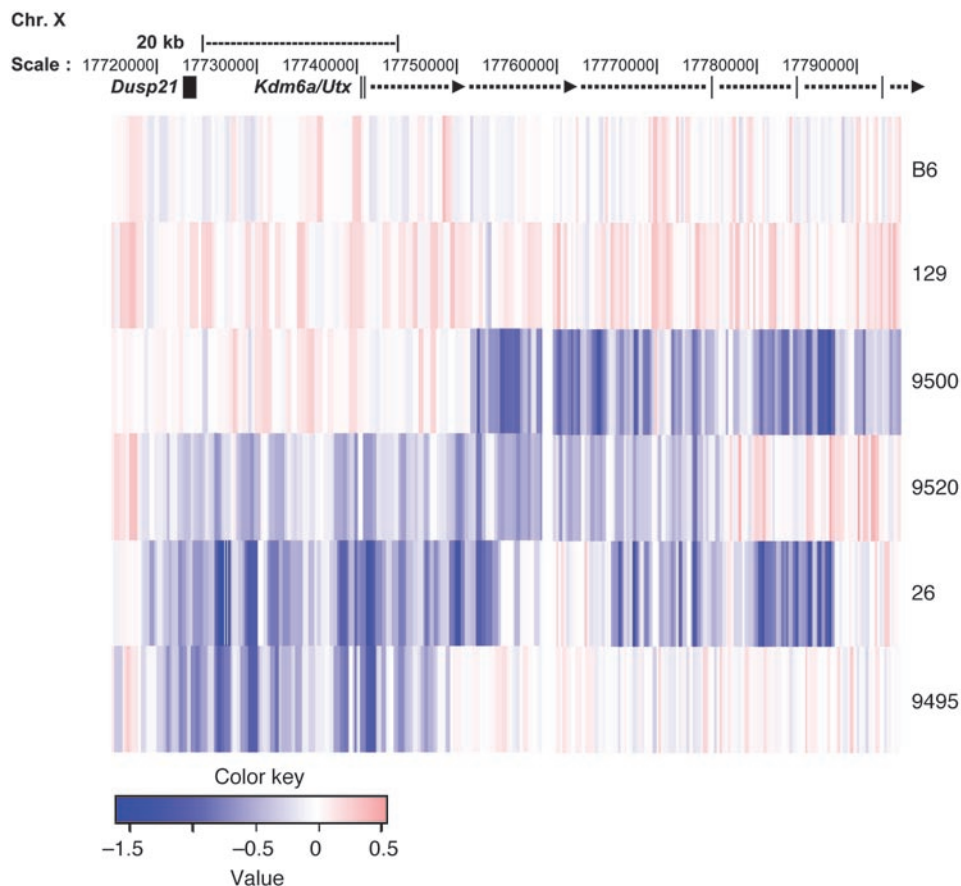
**Figure 4**

Structural variant analysis of the sequenced mouse APL genome, with discovery and validation of a somatic 150-kb deletion on chromosome X that included nearly all of the *Kdm6a* gene also somatically deleted in 1 human AML sample. **(A)** Copy number depth plot by sequence coverage for the tumor 9500 and 129/SvJ genomes in the same region on chromosome X that includes exons 3–29 of the *Kdm6a* locus. The 129/SvJ strain has no deletion in this region. **(B)** PCR validation of the tumor 9500 deletion. The PCR product was cloned and sequenced to confirm the breakpoints of the deletion. **(C)** High-resolution copy number depth plot of a human AML sample with a *KDM6A* deletion (exons 1–3 are deleted). The copy number plot compares the tumor to skin DNA array data from the same patient using the Affymetrix v6.0 SNP array platform. **(A** and **C)** The green lines represent the average copy number for the affected intervals, and the black lines represent the average copy number for the unaffected regions. Red dots represent individual copy number data points within the affected intervals, and blue dots represent individual copy number data points for the unaffected regions.

We defined the variant allele frequency of the *Jak1* V657F mutation in the 7 tumors using deep read counts on the 454/FLX platform, as previously described (ref. 1 and Figure 3B). The variant allele frequency in tumor 9500 was 43.86%, suggesting that nearly all of the cells in that tumor contained the heterozygous mutation. This was confirmed by sequencing 48 individual tumor 9500 colonies (grown in methylcellulose to assure clonality) to determine the *Jak1* V657F allele frequency: 44 colonies were heterozygous for the *Jak1* V657F mutation, 1 colony was homozygous for the *Jak1* V657F mutation, and 3 colonies were *Jak1* WT (data not shown). We also determined that the mutant *Jak1* V657F allele was expressed in tumors 9500 and 12 at 36.67% and 48.78% of the cDNA reads, respectively, using reverse-transcriptase PCR, followed by sequencing of the complementary DNA on the 454/FLX platform (data not shown). The phenotype of the 2 *Jak1*-mutated mouse APL tumors

on the B6/T (tumors 9500 and 26) was not different from 13 other well-characterized B6/T tumors (Supplemental Figure 3B). Similarly, the 2 *Jak1*-mutated tumors did not have a distinct gene expression signature in comparison with that of the 13 tumors without the mutation. An unsupervised analysis of gene expression microarray data from the 15 mouse APL tumors revealed that the 2 *Jak1*-mutated tumors were not tightly clustered (Supplemental Figure 4). Using the significance analysis of microarrays (SAM) algorithm, we found no significantly dysregulated genes between tumors with or without the *Jak1* mutation (data not shown).

We recognize that pathogenically relevant somatic mutations, in both coding and noncoding regions of the genome (and germline susceptibility loci), may have been missed using our approach. However, our studies do suggest that the total number of true mutations present in this genome is similar to or less than the total numbers

**Figure 5**

Heat map of *Kdm6a* deletions in 4 mouse APL tumors based on targeted NimbleGen custom 12 × 135 K CGH array data. *Kdm6a* deletions are not residual germline CNVs (there are 2 copies of this region in the 129/SvJ strain). Deletions of *Kdm6a* in the 4 tumors have unique breakpoints and are not consistent with a founder effect or strain variant. On the right side of the heat map, B6 and 129 represent the B6 and 129/SvJ WT samples, respectively, that were used as controls, and 9500, 9520, 26, and 9495 represent individual mouse tumor numbers.

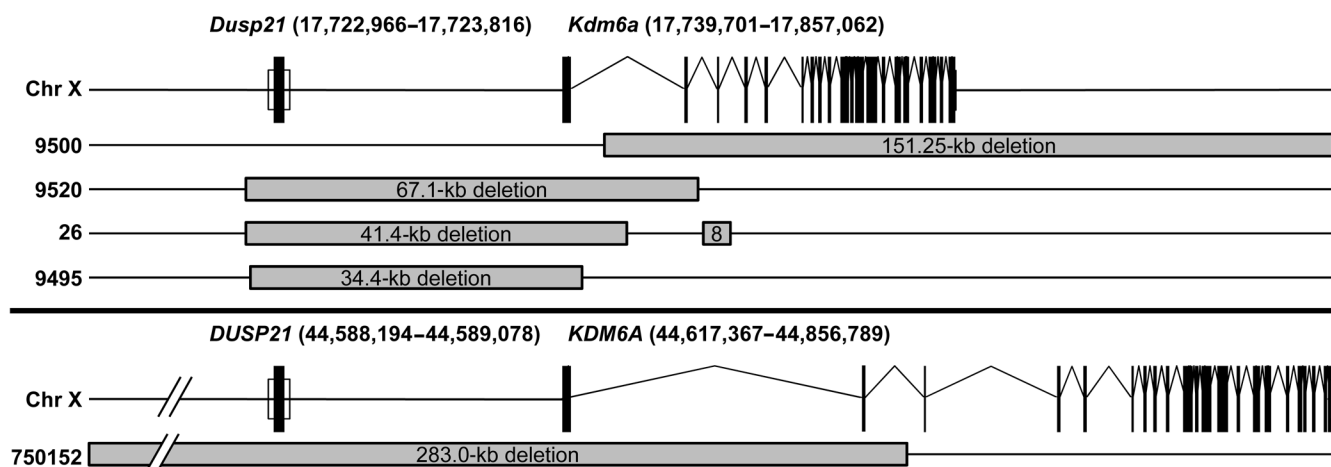
of mutations detected in sequenced human AML genomes. We parsed tumor 9500's heterozygous, nonblock-associated mutations by repetitive content (as defined by the mm9 RepeatMasker track from the University of California Santa Cruz Genome Browser). This breakdown yielded 31 tier 1 (coding sequence) variants; 1,311 nonrepetitive, non-tier 1 mutations; and 5,101 repetitive, non-tier 1 mutations. If the somatic validation rate of 6 out of 31 was constant across tiers, then we expected about 250 of the nonrepetitive variants to be true positives. Thus, the number of nonrepetitive variants in the mouse tumor genome was actually smaller than the number of variants in most of our validated human AML genomes. Those range from approximately 200 to 1,000 variants per genome from the 25 validated human AML cases studied so far (D.E. Larson and T.J. Ley, unpublished observations). The results from the CGH study, shown as a heat map in Supplemental Figure 1, also revealed that tumor 9500 has a diploid genome, with no copy number variants detected by dense whole genome CGH array. This provides orthogonal validation of our sequencing results and further supports the idea that this genome is not "unstable."

**Functional validation of a recurrent *Jak1* mutation identified in the sequenced mouse APL genome.** To test the functional significance of the *Jak1* V657F (or human V658F) mutation for leukemia development, we expressed human *JAK1* cDNA (using MSCV-based retroviral transduction) in bone marrow cells derived from healthy 6-week-old WT or mCG-PR mice in 2 independent experiments. Nine out of ten mice transplanted with mCG-PR bone marrow transduced with the *JAK1* V658F retrovirus developed a rapidly fatal leukemia, with a mean latency of 35 days

(range, 28–52 days), whereas mice transplanted with mCG-PR bone marrow expressing the *JAK1* WT or GFP constructs did not develop disease in this time frame (Figure 3C). The phenotype of the disease included splenomegaly (mean spleen weight of  $449 \pm 75$  mg,  $n = 8$ ) and leukocytosis (mean wbc count of  $17.3 \pm 12.0$ ,  $n = 4$ ). The mutant *JAK1* V658F virus did not cause a detectable phenotype when transduced into WT marrow cells (Figure 3E). Immunoblots demonstrated that the levels of *JAK1* protein were similar in splenocytes from the *JAK1* WT and *JAK1* V658F cohorts (data not shown).

The leukemia that developed in the *JAK1* V658F mCG-PR animals was transplantable to healthy secondary recipients with a short latency (30–60 days). Southern blot analysis of spleen DNA from 5 of the diseased mice in the primary cohort revealed a small number of clonal integration sites in 4 tumors (oligoclonal) and no detectable clonal integration events in 1 tumor (Supplemental Figure 5). The myeloid cells of the primary *JAK1* V658F mCG-PR tumors were more mature than those of the tumors that developed in the secondary recipients, for unclear reasons (Supplemental Figure 6).

A third retroviral transduction/transplantation experiment was performed using a lower dose of the MSCV vectors (~3% vs. 15% transduction efficiency in the prior experiments) to allow for quantitative assessment of myeloid expansion; peripheral blood samples from all mice were analyzed weekly. The mice from all cohorts in this experiment were sacrificed simultaneously at 10 weeks after transduction, when the mCG-PR/*JAK1* V658F mice became ill. We detected a marked expansion of Gr-1<sup>+</sup>/GFP<sup>+</sup> cells in the peripheral

**Figure 6**

Schematic representation of the 4 *Kdm6a* deletions found in mouse APL tumors (tumors 9500, 9520, 26, and 9495) and a *KDM6A* deletion found in a human AML patient (sample 750152). Mouse APL tumor 26 has 2 deletions involving *Kdm6a*, a 41.4-kb deletion and a smaller 8-kb deletion. Chr X, chromosome X.

blood of the mice transplanted with mCG-PR marrow transduced with the *JAK1* V658F construct (Figure 3D). By 10 weeks, these mice had also developed splenomegaly and leukocytosis (Supplemental Figure 7). None of the other cohorts of mice exhibited this phenotype; however, there was a trend for expansion of Gr-1<sup>+</sup>/GFP<sup>+</sup> cells in the cohort of mice with the *JAK1* WT virus transduced into mCG-PR marrow (Figure 3E); the *JAK1* WT mice did not develop myeloproliferation or early leukemias, demonstrating the importance of the V658F mutation for these phenotypes.

We tested the efficacy of the pan-JAK inhibitor (pyridone 6 [P6]) versus a selective JAK3 inhibitor (WHI-P131) in 10 banked mCG-PR tumors, using a methylcellulose colony-forming assay (Supplemental Figure 8). Banked mCG-PR tumors were thawed, incubated in liquid culture with or without drug for 48 hours, and then plated in methylcellulose for 5 to 7 days before colonies were counted. Although there was some variability in drug sensitivity among the 10 tumors, the pan-JAK inhibitor exhibited similar efficacy as that of ATRA in this assay ( $P = 0.6890$ ). There was no significant difference in the efficacy of P6 between the tumors with the *Jak1* V657 mutations (tumors 9500 and 26) versus those without *Jak1* mutations ( $P = 0.0674$ ). Using identical culture conditions, we showed that P6 hit its “target” in the tumor cells, because it decreased Stat5 phosphorylation (compared with DMSO-treated or JAK3 inhibitor-treated controls) in 2 mCG-PR tumors without *Jak1* mutations (Supplemental Figure 9).

**Structural variant analysis of the sequenced mouse APL genome.** We next performed structural variant analysis of the sequenced tumor genome and identified 482 putative intrachromosomal rearrangements (deletions >30 bp, inversions, small insertions, and tandem duplications) that were not present in the B6/Jackson reference genome (18). An assembly score based on the assembly quality (length of contig and number of reads supporting the contig) was assigned, and 8 high-confidence, genic deletions were identified. PCR validation of 7 out of 8 of these regions showed evidence of a copy number variation (CNV) in 129/SvJ DNA, demonstrating that these were inherited variants from the 129/SvJ strain (data not shown). However, we validated a somatic 150-kb deletion on chromosome X that included nearly all of the lysine (K)-specific

demethylase 6A (*Kdm6a*, also known as *Utx*) gene, a histone H3K27 demethylase that has recently been shown to be deleted in 2 human AML cell lines and several other cancers (refs. 19, 20, and Figure 4, A and B). We screened 14 additional mouse APL tumors using an ultra-dense Nimblegen CGH custom-tiling array and found *Kdm6a* deletions in 4 out of 15 tumors, including the proband (Figures 5 and 6 and Table 1). The expression of *Kdm6a* was reduced to background levels in the tumors containing the deletions (Supplemental Figure 10A). We screened 150 human AML samples for deletions in the *KDM6A* region of the X chromosome, using paired tumor and skin DNA samples on the Affymetrix v6.0 SNP array platform. One female patient with FAB M2 AML, whose cytogenetics and FISH analysis revealed t(8;21) and loss of X, had a ~200-Kb deletion of the remaining X chromosome (which included the *DUSP21* gene and the 5' region and first 3 exons of *KDM6A*) (Figure 4C, Figure 6, and Supplemental Figure 11). Although *KDM6A* is normally expressed in CD34 cells and in nearly all AML samples, the expression of *KDM6A* was undetectable in this AML case, validating the transcriptional consequences of the deletion plus the loss of 1 X chromosome (Supplemental Figure 10B). The role of this mutation in AML pathogenesis is not yet clear but may involve the dysregulation of Hox, Notch, or Rb signaling pathways (21–24). The 4 *Kdm6a*-deleted mouse APL tumors did not have a distinct gene expression signature in comparison with that of 11 tumors without the deletion (using unsupervised clustering analysis or a supervised analysis comparing expression of only the Hox genes; Supplemental Figures 4 and 12). The only significantly dysregulated gene between tumors with and without *Kdm6a* deletions was *Kdm6a* itself (data not shown). These data suggest that the 11 tumors without *Kdm6a* deletions may also have mutations in this gene or mutations in the pathway that this gene affects.

## Discussion

Recurring, acquired chromosomal aberrations and distinct gene expression signatures have been previously identified in mouse models of APL (8–10), but prior studies, using array-based platforms, have not been able to identify the relevant driver mutations that arise during disease progression. By sequencing a single mouse





**Table 1**  
*Kdm6a* deletions in APL tumors

Tumor	Deletion start (bp)	Deletion end (bp)	Deletion size (bp)	Exons affected
Mouse 9500	17,753,180	17,904,432	151,252	<i>Kdm6a</i> 3–29
Mouse 9520	~17,714,248	~17,781,365	~67,117	<i>Dusp21</i> 1, <i>Kdm6a</i> 1–3
Mouse 26	~17,714,999	~17,756,399	~41,400	<i>Dusp21</i> 1, <i>Kdm6a</i> 1 and 2
Mouse 26	~17,782,706	~17,790,700	~7,994	<i>Kdm6a</i> 4
Mouse 9495	~17,715,436	~17,749,804	~34,368	<i>Dusp21</i> 1, <i>Kdm6a</i> 1 and 2
Human 750152	44,433,508	44,716,476	282,968	<i>DUSP21</i> 1, <i>KDM6A</i> 1–3

The table includes the deletion breakpoints, deletion size, and exons of genes affected for the 4 deletions involving *Kdm6a* found in mouse APL tumors and corresponds to the schematic representation shown in Figure 6.

APL genome using next-generation technologies, we have identified a recurring point mutation that is relevant for APL pathogenesis (*Jak1* V657F or V658F in humans) and a recurring deletion in a histone demethylase (*Kdm6a*) that is present in both human and mouse AML genomes. *KDM6A* and other genes involved in histone methylation, such as *JARID1C* and *EZH2*, have recently been found to be mutated in a variety of human cancers, including myeloid malignancies (19, 20, 25–28). We have shown that aberrant *Jak1* signaling can play an important role in APL pathogenesis in vivo; further, APL samples with or without *Jak1* mutations are sensitive to a pan-JAK inhibitor in a colony-forming assay, which suggests that JAK-STAT signaling may be activated by additional mechanisms in this mouse model of APL.

Finally, by sequencing a mouse cancer genome derived from a mouse backcrossed 10 generations on the B6/T, we have learned that a significant amount of genetic heterogeneity is present even in inbred mouse strains; therefore, a matched normal sample will be optimal for defining the somatic status of mutations arising in mouse models of cancer. Regardless, the approach described here may allow us to rapidly identify progression mutations that are relevant for human AML and provides an important proof of concept that this mouse model of AML is functionally related to its human counterpart. Mutations in several known oncogenes, including *K-RAS* and *FLT3* (and dysregulated expression of *BCL2*), have been previously shown to cooperate with *PML-RARA* in this mouse APL model (29–33); importantly, these mutations occur in many AML subtypes, not just APL. The mutations that spontaneously arise in this mouse model of human APL can now be identified by whole genome sequencing using next-generation platforms; this provides a physiologic system for the detection of leukemia progression mutations that are also relevant for human AML pathogenesis.

## Methods

**Preliminary screen of somatic copy number alterations.** DNA from 15 mouse APL tumors on the B6/T (F10) and pooled DNA derived from spleen of 6-week-old WT, parental strain mice (B6/T,  $n = 6$ , and 129X1/SvJ,  $n = 6$ ) was hybridized to the NimbleGen Mouse CGH 3x720K WG-T arrays, as previously described (34). To systematically identify gross chromosomal gains and losses, we applied the wuHMM algorithm to the average  $\log_2$  ratios of 50 consecutive probes (35). Because segmentation algorithms assume that the test and reference DNA samples have largely the same copy number across a chromosome, gross abnormalities can confound the identification of micro-alterations. To compensate for this, we mean centered each chromosome, except for chromosomes containing gross abnormalities. For each of these chromosomes, we mean centered the called and

non-called regions separately. To identify micro-alterations, we executed wuHMM on the normalized individual probe-level data, identifying 9,897 putative CNVs. Next, we determined the extent of residual 129/SvJ CNVs in each tumor. First, we identified 140 germline CNVs in 129/SvJ versus B6/T (60 of the 140 CNVs were identified as amplifications with a gain score of  $> 1.5$ , and the remaining 80 CNVs were identified as deletions with a loss score of  $> 2.5$ ; gain and loss scores were calculated using the wuHMM algorithm, in which CNVs are scored based on  $\log_2$  ratio magnitude, number of probes, and local noise). For each CNV region, we assigned genotypes to tumor samples based on the  $\log_2$  ratio of individual probes within the region, as previously described (36). CGH array data for all samples have been deposited on the Gene Expression Omnibus (GEO; <http://www.ncbi.nlm.nih.gov/geo/>; SuperSeries accession no. GSE26131).

**Tiling-array validation of somatic copy number alterations in 15 tumors.** To prioritize candidate copy number alterations (CNAs) for validation on a custom tiling array, first we filtered calls based on visual inspection. This process resulted in 455 calls. 84 out of the 455 CNAs substantially overlapped 129X1/SvJ CNVs that we identified in this study. These were considered germline polymorphisms and were excluded from further analyses, leaving 371 candidates. It is possible that we missed real CNAs in the visualization process. Therefore, of the calls that did not pass our initial inspection, we also included 268 calls that passed stringent score thresholds: gains scoring of more than 1.25 and losses scoring of more than 1.75. Overlapping CNAs were merged into nonredundant regions, leading to a final list of 449 candidate regions for validation by custom-tiling array. Validation arrays were designed such that each region was covered by approximately 300 probes.

**Mouse gene expression arrays.** Total cellular RNA was purified using TRIzol reagent (Invitrogen), quantified using UV spectroscopy (Nanodrop Technologies), and qualitatively assessed using an Experion Bioanalyzer. Amplified cDNA was prepared from 20 ng total RNA using the whole transcript WT-Ovation RNA Amplification System and biotin-labeled using the Encore Biotin Module, both from NuGen Technologies, according to the manufacturer's instructions. Labeled targets were then hybridized to Mouse Exon 1.0 ST arrays (Affymetrix), washed, stained, and scanned using standard protocols from the Siteman Cancer Center, Molecular and Genomic Analysis Core Facility (<http://pathology.wustl.edu/research/cores/lcg/index.php>). Affymetrix Expression Console software was used to process array images, export signal data, and evaluate image and data quality relative to standard Affymetrix quality control metrics. The expression data from 3 out of the 34 probe sets for *Kdm6a* was plotted; these 3 “best” probe sets had the highest expression with the lowest variability in the tumors without the *Kdm6a* deletion. The average expression of *Kdm6a* in the 11 tumors without *Kdm6a* deletions was significantly higher than the expression of the tumors with deletions involving *Kdm6a*, if the raw expression data from all 34 probe sets was averaged for each sample ( $P < 0.0001$ ). Both the unsupervised and supervised heat map analysis of the 4 *Kdm6a*-deleted



tumors versus the remaining 11 tumors was done using Spotfire software (TIBCO). To determine significantly dysregulated genes, we removed probes with raw signal intensity of less than 200 in all samples (bringing the total number of probes in the analysis down to 142,000) and used a fold-change cutoff of less than or equal to 0.5 or more than or equal to 2 and *P* value cutoff of less than or equal to 0.05, using the ANOVA algorithm. Finally, we removed probe sets with average expression of less than 200 in both groups. The remaining probe sets were also analyzed using SAM (37); 6 probe sets were significant at an FDR of 0, and all 6 probe sets were significant for *Kdm6a*. We used the same approach for the analysis of the 2 *Jak1*-mutated tumors in comparison with the 13 tumors without a *Jak1* mutation. Exon array data for all samples have been deposited on GEO (<http://www.ncbi.nlm.nih.gov/geo/>; SuperSeries accession no. GSE26131).

**Human gene expression and SNP arrays.** The gene expression array and analysis of the human sample 750152 was done on the Affymetrix Human v133 Plus 2 array, as previously described (38). The copy number analysis of the human sample 750152 was done by Affymetrix v6.0 SNP array, as previously described (39), and analyzed by the CMDS algorithm (40). One hundred fifty human AML samples were screened by CMDS of Affymetrix v6.0 SNP array data, with a focal deletion involving the *KDM6A* gene in 1 sample, 750152. This study was approved by the Human Research Protection Office at Washington University School of Medicine, after patients and donors provided informed consent, in accordance with the Declaration of Helsinki.

**Illumina library construction.** We followed the standard library construction procedure, as previously described (16). Briefly, we started with 500 ng DNA from the mouse APL tumor 9500 and 1  $\mu$ g DNA from a pool of equal amounts of DNA isolated from the spleens of 6 young 129X1/SvJ mice. After the DNA was fragmented, end repaired, and ligated with adaptors, we amplified the products and ran them on a polyacrylamide gel. We then excised gel slices between 350 and 400 bp and 550 and 600 bp for the tumor 9500 sample and 300 and 350 bp for the 129X1/SvJ pool and eluted the DNA from each gel slice as the source for independent libraries.

**Illumina sequencing.** After diluting the libraries to a 10-nM concentration, we used the paired-end flow cell and cluster generation kits to produce flow cells with an average cluster density ranging between 115,000 to 420,000 clusters per tile. We used the standard sequencing kits (Illumina Sequencing Kit v3) and performed 36–100 cycles of nucleotide incorporation. After this first round of end sequencing, the flow cell was treated to remove the synthesized fragments, clusters were re-amplified, and the resulting fragments were linearized. We then annealed the second sequencing primer and initiated another round of sequencing by synthesis to complete the read pairs. The read length for the second sequencing round matched that of the first. After round 2, we used the Illumina sequencing pipeline, version 1.3 or version 1.6 (depending on when the sequencing was performed), to analyze the data and produced files containing high-quality ("passed filter") reads with associated quality values.

**Alignment, coverage analysis, and SNV/indel calling.** Illumina reads from both mouse strains were aligned to the mouse NCBI build 37 reference sequence using MAQ (41). Haploid coverage for each genome was estimated using MAQ's mapcheck command at 28.9X for 129/SvJ and 15.5X for tumor 9500. SNVs in tumor 9500 were detected by MAQ and further filtered using MAQ SNPfilter. Despite 10 generations of backcrossing to B6/T, we expected to find a small number of 129/SvJ variants clustered in inherited blocks. Thus, we predicted variants from our genomic reads of 129/SvJ with SAMtools and removed tumor 9500 variants sharing an allele with predictions from 129/SvJ from consideration (42). We then further removed predicted sites occurring in blocks. We defined a block as a cluster of at least 4 variants of which each variant was less than 40,000 nucleotides away from its nearest neighbor. After filtering, 31 potential tier 1 heterozygous SNVs in noncontiguous blocks were then validated by

resequencing on the 3730 DNA Analyzer platform, and 23 out of 31 sites did not validate. Of these, 1 had no coverage, and 3 had low-quality data due to simple repeat content at the site. Six were variants in our B6/T WT pool and thus represented variation from the sequenced reference in our backcross. One site was present in both the B6/T WT pool and the 129/SvJ WT control, but the 129/SvJ variant did not pass MAQ SNPfilter and hence was not identified as a 129/SvJ variant. One variant was present in the 129/SvJ sequence but did not pass MAQ SNPfilter and thus was not filtered out by our analysis. Eleven sites validated as matching the reference sequence. Of those, manual review found that 2 had low coverage, 3 looked like potential paralog mappings, 2 were near homopolymers, 2 were in regions with reads supporting the variant that were ambiguously mapped (in addition to some reads that were unambiguous), and 2 gave no indication of why they might have validated WT.

**Determination of residual 129/SvJ genomic regions.** We found 4,951,238 SNPs present in the 129/SvJ genome compared with the B6/Jackson reference genome. There were 78,339 129/SvJ SNPs present in the tumor 9500 genome (10,479 were homozygous; 55,691 were heterozygous but overlapped homozygous 129/SvJ mutations; and 12,169 were heterozygous and exactly matched heterozygous mutations in 129/SvJ). The percentage of B6/Jackson genome in the tumor 9500 genome equals  $([0.5 \times \text{number of heterozygous SNPs in tumor 9500 that were homozygous in the 129/SvJ genome}] + [0.75 \times \text{number of heterozygous SNPs in tumor 9500 that exactly matched heterozygous SNPs in 129/SvJ genome}] + [\text{number of homozygous SNPs present in both tumor 9500 and 129/SvJ genome}]) / (\text{total number of polymorphic alleles})$ . Thus, the percentage of residual 129/SvJ genome in the tumor 9500 genome was calculated to be  $([0.5 \times 55,691 \text{ SNPs}] + [0.75 \times 12,169 \text{ SNPs}] + 10,479 \text{ SNPs}) / 4,951,238 \text{ alleles}$  or 0.96%. Conversely, the percentage of the B6/Jackson genome present in the tumor 9500 genome was 99.04%. We used the Circos program (<http://mkweb.bcgsc.ca/circos/>) to generate the heat map of residual 129/SvJ SNPs by chromosomal location (Figure 2 and ref. 43).

**Determination of *Jak1* V657F allele frequency.** We thawed a vial of passaged tumor 9500 and then plated the tumor cells using serial dilution in methylcellulose plates containing SCF, IL-3, and IL-6 (MethoCult M3534, Stem Cell Technologies) for 7 days before 48 distinct, individual colonies (>50 cells) were harvested by direct visualization under light microscopy. Individual colonies were transferred to a single well of a 96-well plate, washed with PBS, and spun down. Cell pellets were then directly used as the input for whole genome DNA amplification, as described in ref. 2. Whole genome amplification DNA was then used as the input DNA for standard PCR amplification of a *Jak1* amplicon, followed by Sanger sequencing. We included 2 mouse APL tumors with known *Jak1* V657F mutations, 2 mouse APL tumors without *Jak1* mutations, and 2 blank wells as controls for this experiment.

**Sequence based copy number analysis.** We aligned the APL data with BWA and counted the number of mapped reads in consecutive nonoverlapping 1-kb intervals across the genome (44). We estimated copy numbers by dividing the read counts by the chromosomal median. Copy number altered regions (CNARs) between these 2 strains were identified by first dividing the genome into 10-kbp nonoverlapping windows. We estimated the copy number value of each window as twice (diploid) the ratio of the number of reads confidently mapped (mapping quality >35) within the window over the median of all the windows in the genome. For each genome, we used a Hidden Markov Model (HMM) to segment the copy number values and produce copy number segments. Each state in the HMM corresponds to a discrete copy number, and the distribution of the copy number values given a state was modeled as a Gaussian probability density function. We used the expectation maximization algorithm to estimate the HMM parameters and determined the segmentation using the Viterbi algorithm. We derived CNARs by comparing the segmentation of the tumor genome versus that



of the normal genome. A log likelihood ratio (LLR) score was computed for each CNAR to quantify the possibility of being a true CNAR from being the null (copy number neutral) hypothesis. All CNARs with LLRs of more than or equal to 100 were reported. We have named the above method for detecting CNARs, CNVHMM. The boundaries of the CNARs were further refined using supporting discordant read pairs identified by BreakDancer (18). PCR validation was done with primers designed upstream and downstream of the predicted deletion breakpoints. For tumor 9500, the forward primer was GACAGACCTACCTCTCATG at position 17,752,753 of chromosome X, and the reverse primer was GACAGACCTACCTCTCATG at position 17,904,755 (using build 37.1 of the mouse genome). The PCR product was cloned using the Topo TA Cloning Kit (Invitrogen) and sequenced to confirm the breakpoints of the deletion.

**Functional validation using the transduction-transplantation mouse model with human *JAK1* cDNA MSCV retroviral constructs.** The human *JAK1* cDNA was obtained from a commercial vendor (Origene) and subcloned into the retroviral expression vector *MSCV-IRES-eGFP (MIG)*. The V658F mutation was introduced into the *JAK1* coding sequence by site-directed mutagenesis using the QuikChange Site-Directed Mutagenesis Kit (Stratagene) and confirmed by full-length DNA sequencing. Retroviral supernatants were generated and viral titers determined by flow cytometry analysis of the GFP<sup>+</sup> cells in retrovirally transduced 3T3 cells, as described previously (45). GFP alone versus *JAK1* WT/IRES/GFP versus *JAK1* V658F mutant/IRES/GFP MSCV retroviral constructs were transduced into WT B6/T or mCG-PR bone marrow from 6-week-old healthy mice. The transduced marrow was then transplanted into lethally irradiated WT B6/T male mice obtained from The Jackson Laboratory, according to the method previously reported (45). Briefly, mononuclear bone marrow cells were cultured in media that contained RPMI, 20% FCS, SCF, FLT3L, IL-3, and TPO for 48 hours. 5-Fluorouracil treatment was not used for donor mice. The cells were then spininfected twice, on days -1 and 0. After a 4-hour rest period, transduced bone marrow cells ( $1 \times 10^6$  cells) were then injected intravenously via the tail vein into lethally irradiated (1,100 cGy) syngeneic B6/T mice. Secondary transplants were performed by retro-orbitally injecting  $5 \times 10^5$  to  $10 \times 10^5$  unsorted, banked mononuclear spleen cells isolated from moribund primary transplant recipients ( $n = 3$ ) into secondary syngeneic recipient healthy mice. Two mice in the mCG-PR cohort transduced with *JAK1* V658F retrovirus in the first 2 experiments did not have sustained engraftment of GFP<sup>+</sup> cells and were not included in the analysis.

**Analysis of mice.** All mouse work was in done in accordance with institutional guidelines and approved by the Animal Studies Committee at Washington University in accordance with current NIH policy. Mice were monitored 3 times per week for disease by palpation and observation. Peripheral blood was obtained by retro-orbital phlebotomy after adequate methoxyflurane (Vedco) anesthesia using heparinized capillary tubes (Fisher Scientific). Mononuclear cell suspensions of spleen or bone marrow were made by passing tissue through 70- $\mu$ m nylon mesh cell strainers (Falcon) wetted with ACK lysis buffer, spun down in appropriate volume of ACK buffer, and then resuspended in working media.

Cytospin tissue slides were stained with Wright-Giemsa (Sigma-Aldrich) and were imaged using a Nikon MICROPHOT-SA microscope equipped with an oil-immersion 50 $\times$ /0.90 or 100 $\times$ /1.30 objective lens (Nikon Corp.). Spleen differentials were done by a blinded hematopathologist who counted 200 cells per slide.

**Immunophenotyping.** One million mononuclear cells were suspended in 100  $\mu$ l flow cytometry buffer and incubated for 20 minutes on ice with CD16/32 FcR block and then appropriate antibodies, including PE-conjugated Gr-1, FITC-conjugated CD34, allophycocyanin-conjugated CD117, or isotype controls (all from eBioscience), before being

analyzed on a FACScan Flow Cytometer (BD Biosciences). Staining for phosphorylated STAT1 (pY701), STAT3 (pY705), and STAT5 (pY694) was done as described previously (all antibodies from BD Biosciences) (46).

**Methylcellulose colony-forming assay.** We tested the efficacy of a commercially available pan-JAK inhibitor, P6 or JAK Inhibitor I (final concentration 0.5  $\mu$ M, in 1,000 $\times$  DMSO stock; Calbiochem), versus doxorubicin (final concentration of 100 ng/ml, in 1,000 $\times$  water stock; Novation), ATRA (final concentration of 1  $\mu$ M, in 1000 $\times$  ethanol stock, Sigma-Aldrich), and a selective JAK3 inhibitor (WHI-P131 or JAK3 Inhibitor I, final concentration 10  $\mu$ M, in 1,000 $\times$  DMSO stock; Calbiochem) in a set of 10 banked mCG-PR tumors by a standard methylcellulose colony-forming assay. Banked mCG-PR tumors were thawed in liquid culture with K10 media with or without drug (1:1,000 dilution of DMSO used for mock controls) for 48 hours, and then plated in methylcellulose containing SCF, IL-3, and IL-6 (MethoCult M3534, Stem Cell Technologies) for 5–7 days before colonies (>50 cells) were counted. The cells were incubated throughout the experiment in a 3% oxygen incubator at 37 $^\circ$  C.

**Western blot analysis.** Protein lysate preparation and Western blots were performed following standard protocols as described previously (6). The Jak1 (6G4) rabbit mAb used was from Cell Signaling Technology. To assess protein loading, blots were probed with anti- $\beta$ -actin antibody (Sigma-Aldrich).

**DNA isolation and Southern analysis.** Genomic DNA was isolated from banked splenocytes after being lysed with a 1% Triton X-100 lysis buffer with 2 mg/ml Proteinase K added (Sigma-Aldrich), followed by standard phenol-chloroform extraction. For assay of clonality, 10  $\mu$ g genomic DNA was digested with *Eco*RI or *Hind*III (as a positive control) (both from Fisher Scientific). The hybridization probe was a 277-bp PCR fragment generated from primers targeting the cDNA of the *EGFP* gene.

**Statistics.** Statistical comparisons were made using Student's 2-sided *t* test unless otherwise noted. We performed the above calculations and the Kaplan-Meier survival analysis using the log-rank test with the GraphPad Prism 5 software. We considered  $P \leq 0.05$  to be significant, except for the analysis of the methylcellulose colony-forming assay (Supplemental Figure 8), for which we considered a cutoff of  $P \leq 0.01$  as significant.

## Acknowledgments

This work was supported by NIH grants CA083962 and CA101937 and the Barnes-Jewish Hospital Foundation grant 00335-0505-02 to T.J. Ley. The Siteman Cancer Center and High Speed Cell Sorter Core is supported in part by an NCI Cancer Center Support Grant, P30 CA91842. The Microarray Core is supported by National Center for Research Resources grant UL1 RR024992. L.D. Wartman was supported by NIH grant T32 HL007088.

Received for publication September 30, 2010, and accepted in revised form January 19, 2011.

Address correspondence to: Richard K. Wilson, The Genome Institute at Washington University, 4444 Forest Park Blvd., Box 8501, St. Louis, Missouri 63108, USA. Phone: 314.286.1814; Fax: 314.286.1810; E-mail: rwilson@wustl.edu.

Zhifu Xiang's present address is: Department of Medicine, Division of Oncology, University of Arkansas for Medical Sciences, Little Rock, Arkansas, USA.

Rhonda E. Ries's present address is: Clinical Research Division, Fred Hutchinson Cancer Research Center, Seattle, Washington, USA.

Patrick Cahan's present address is: Division of Hematology/Oncology, Children's Hospital, Boston, Massachusetts, USA.





1. Ley TJ, et al. DNA sequencing of a cytogenetically normal acute myeloid leukaemia genome. *Nature*. 2008;456(7218):66–72.
2. Mardis ER, et al. Recurring mutations found by sequencing an acute myeloid leukemia genome. *N Engl J Med*. 2009;361(11):1058–1066.
3. Walter MJ, Graubert TA, Dipersio JF, Mardis ER, Wilson RK, Ley TJ. Next-generation sequencing of cancer genomes: back to the future. *Per Med*. 2009;6(6):653.
4. Grisolan JL, Wesselschmidt RL, Pelicci PG, Ley TJ. Altered myeloid development and acute leukemia in transgenic mice expressing PML-RAR alpha under control of cathepsin G regulatory sequences. *Blood*. 1997;89(2):376–387.
5. Brown D, et al. A PMLRARalpha transgene initiates murine acute promyelocytic leukemia. *Proc Natl Acad Sci U S A*. 1997;94(6):2551–2556.
6. Westervelt P, et al. High-penetrance mouse model of acute promyelocytic leukemia with very low levels of PML-RARalpha expression. *Blood*. 2003;102(5):1857–1865.
7. Kogan SC. Mouse models of acute promyelocytic leukemia. *Curr Top Microbiol Immunol*. 2007;313:3–29.
8. Le Beau MM, Bitts S, Davis EM, Kogan SC. Recurring chromosomal abnormalities in leukemia in PML-RARA transgenic mice parallel human acute promyelocytic leukemia. *Blood*. 2002;99(8):2985–2991.
9. Le Beau MM, et al. Recurring chromosomal abnormalities in leukemia in PML-RARA transgenic mice identify cooperating events and genetic pathways to acute promyelocytic leukemia. *Blood*. 2003;102(3):1072–1074.
10. Walter MJ, et al. Expression profiling of murine acute promyelocytic leukemia cells reveals multiple model-dependent progression signatures. *Mol Cell Biol*. 2004;24(24):10882–10893.
11. Graubert TA, et al. A high-resolution map of segmental DNA copy number variation in the mouse genome. *PLoS Genet*. 2007;3(1):e3.
12. Flex E, et al. Somatic acquired JAK1 mutations in adult acute lymphoblastic leukemia. *J Exp Med*. 2008;205(4):751–758.
13. Jeong EG, et al. Somatic mutations of JAK1 and JAK3 in acute leukemias and solid cancers. *Clin Cancer Res*. 2008;14(12):3716–3721.
14. Mullighan CG, et al. JAK mutations in high-risk childhood acute lymphoblastic leukemia. *Proc Natl Acad Sci U S A*. 2009;106(23):9414–9418.
15. Mullighan CG, et al. Rearrangement of CRLF2 in B-progenitor- and Down syndrome-associated acute lymphoblastic leukemia. *Nat Genet*. 2009;41(11):1243–1246.
16. Tomasson MH, et al. Somatic mutations and germline sequence variants in the expressed tyrosine kinase genes of patients with de novo acute myeloid leukemia. *Blood*. 2008;111(9):4797–4808.
17. Xiang Z, et al. Identification of somatic JAK1 mutations in patients with acute myeloid leukemia. *Blood*. 2008;111(9):4809–4812.
18. Chen K, et al. BreakDancer: an algorithm for high-resolution mapping of genomic structural variation. *Nat Methods*. 2009;6(9):677–681.
19. Dalglish GL, et al. Systematic sequencing of renal carcinoma reveals inactivation of histone modifying genes. *Nature*. 2010;463(7279):360–363.
20. van Haaften G, et al. Somatic mutations of the histone H3K27 demethylase gene UTX in human cancer. *Nat Genet*. 2009;41(5):521–523.
21. Agger K, et al. UTX and JMJD3 are histone H3K27 demethylases involved in HOX gene regulation and development. *Nature*. 2007;449(7163):731–734.
22. Terashima M, Ishimura A, Yoshida M, Suzuki Y, Sugano S, Suzuki T. The tumor suppressor Rb and its related Rbl2 genes are regulated by Utx histone demethylase. *Biochem Biophys Res Commun*. 2010;399(2):238–244.
23. Wang JK, et al. The histone demethylase UTX enables RB-dependent cell fate control. *Genes Dev*. 2010;24(4):327–332.
24. Herz HM, et al. The H3K27me3 demethylase dUTX is a suppressor of Notch- and Rb-dependent tumors in Drosophila. *Mol Cell Biol*. 2010;30(10):2485–2497.
25. Ernst T, et al. Inactivating mutations of the histone methyltransferase gene EZH2 in myeloid disorders. *Nat Genet*. 2010;42(8):722–726.
26. Morin RD, et al. Somatic mutations altering EZH2 (Tyr641) in follicular and diffuse large B-cell lymphomas of germinal-center origin. *Nat Genet*. 2010;42(2):181–185.
27. Nikoloski G, et al. Somatic mutations of the histone methyltransferase gene EZH2 in myelodysplastic syndromes. *Nat Genet*. 2010;42(8):665–667.
28. Makishima H, et al. Novel homo- and hemizygous mutations in EZH2 in myeloid malignancies. *Leukemia*. 2010;24(10):1799–1804.
29. Kogan SC, et al. BCL-2 cooperates with promyelocytic leukemia retinoic acid receptor alpha chimeric protein (PMLRARalpha) to block neutrophil differentiation and initiate acute leukemia. *J Exp Med*. 2001;193(4):531–543.
30. Kelly LM, et al. PML/RARalpha and FLT3-ITD induce an APL-like disease in a mouse model. *Proc Natl Acad Sci U S A*. 2002;99(12):8283–8288.
31. Walter MJ, et al. Reduced PU.1 expression causes myeloid progenitor expansion and increased leukemia penetrance in mice expressing PML-RARalpha. *Proc Natl Acad Sci U S A*. 2005;102(35):12513–12518.
32. Chan IT, et al. Oncogenic K-ras cooperates with PML-RAR alpha to induce an acute promyelocytic leukemia-like disease. *Blood*. 2006;108(5):1708–1715.
33. Agrawal-Singh S, et al. Pim2 cooperates with PML-RARalpha to induce acute myeloid leukemia in a bone marrow transplantation model. *Blood*. 2010;115(22):4507–4516.
34. Selzer RR, et al. Analysis of chromosome breakpoints in neuroblastoma at sub-kilobase resolution using fine-tiling oligonucleotide array CGH. *Genes Chromosomes Cancer*. 2005;44(3):305–319.
35. Cahan P, et al. wuHMM: a robust algorithm to detect DNA copy number variation using long oligonucleotide microarray data. *Nucleic Acids Res*. 2008;36(7):e41.
36. Cahan P, Li Y, Izumi M, Graubert TA. The impact of copy number variation on local gene expression in mouse hematopoietic stem and progenitor cells. *Nat Genet*. 2009;41(4):430–437.
37. Tusher VG, Tibshirani R, Chu G. Significance analysis of microarrays applied to the ionizing radiation response. *Proc Natl Acad Sci U S A*. 2001;98(9):5116–5121.
38. Payton JE, et al. High throughput digital quantification of mRNA abundance in primary human acute myeloid leukemia samples. *J Clin Invest*. 2009;119(6):1714–1726.
39. Walter MJ, et al. Acquired copy number alterations in adult acute myeloid leukemia genomes. *Proc Natl Acad Sci U S A*. 2009;106(31):12950–12955.
40. Zhang Q, et al. CMDs: a population-based method for identifying recurrent DNA copy number aberrations in cancer from high-resolution data. *Bioinformatics*. 2010;26(4):464–469.
41. Li H, Ruan J, Durbin R. Mapping short DNA sequencing reads and calling variants using mapping quality scores. *Genome Res*. 2008;18(11):1851–1858.
42. Li H, et al. The Sequence Alignment/Map format and SAMtools. *Bioinformatics*. 2009;25(16):2078–2079.
43. Krzywinski M, et al. Circos: an information aesthetic for comparative genomics. *Genome Res*. 2009;19(9):1639–1645.
44. Li H, Durbin R. Fast and accurate short read alignment with Burrows-Wheeler transform. *Bioinformatics*. 2009;25(14):1754–1760.
45. Luo H, Li Q, O'Neal J, Kreisel F, Le Beau MM, Tomasson MH. c-Myc rapidly induces acute myeloid leukemia in mice without evidence of lymphoma-associated antiapoptotic mutations. *Blood*. 2005;106(7):2452–2461.
46. Liu F, et al. Csf3r mutations in mice confer a strong clonal HSC advantage via activation of Stat5. *J Clin Invest*. 2008;118(3):946–955.