

Supplementary Figure Legends

Supplemental Figure 1. **A.** Survival curves of $\text{Foxp3}^{\text{mut}}$, $\text{IL1R1}^{-/-}\text{Foxp3}^{\text{mut}}$, $\text{TLR2}^{-/-}\text{Foxp3}^{\text{mut}}$, $\text{TLR4}^{-/-}\text{Foxp3}^{\text{mut}}$ and $\text{TLR5}^{-/-}\text{Foxp3}^{\text{mut}}$ mice. **B.** Skin and lung inflammation in $\text{TLR2}^{-/-}\text{Foxp3}^{\text{mut}}$, $\text{TLR4}^{-/-}\text{Foxp3}^{\text{mut}}$ and $\text{IL1R1}^{-/-}\text{Foxp3}^{\text{mut}}$ mice (H & E, 200X magnification). **C.** Phenotypic characteristics of Foxp3 and TLR/IL-1R1 single and double mutant mice at 30 d of age, including weight, alopecia, skin hemorrhages and dryness. **D.** Expression of cytokine transcripts in the skin of Foxp3 and TLR/IL-1R1 single and double mutant mice, determined by real time PCR analysis. Each point represents results obtained from one individual mouse. Results in panel **A** reflect 4-21 mice/group, and in panels **B-D** of 4-10 mice/group, derived from 4-7 independent experiments. * $p < 0.05$; ** $p < 0.01$, *** $p < 0.001$.

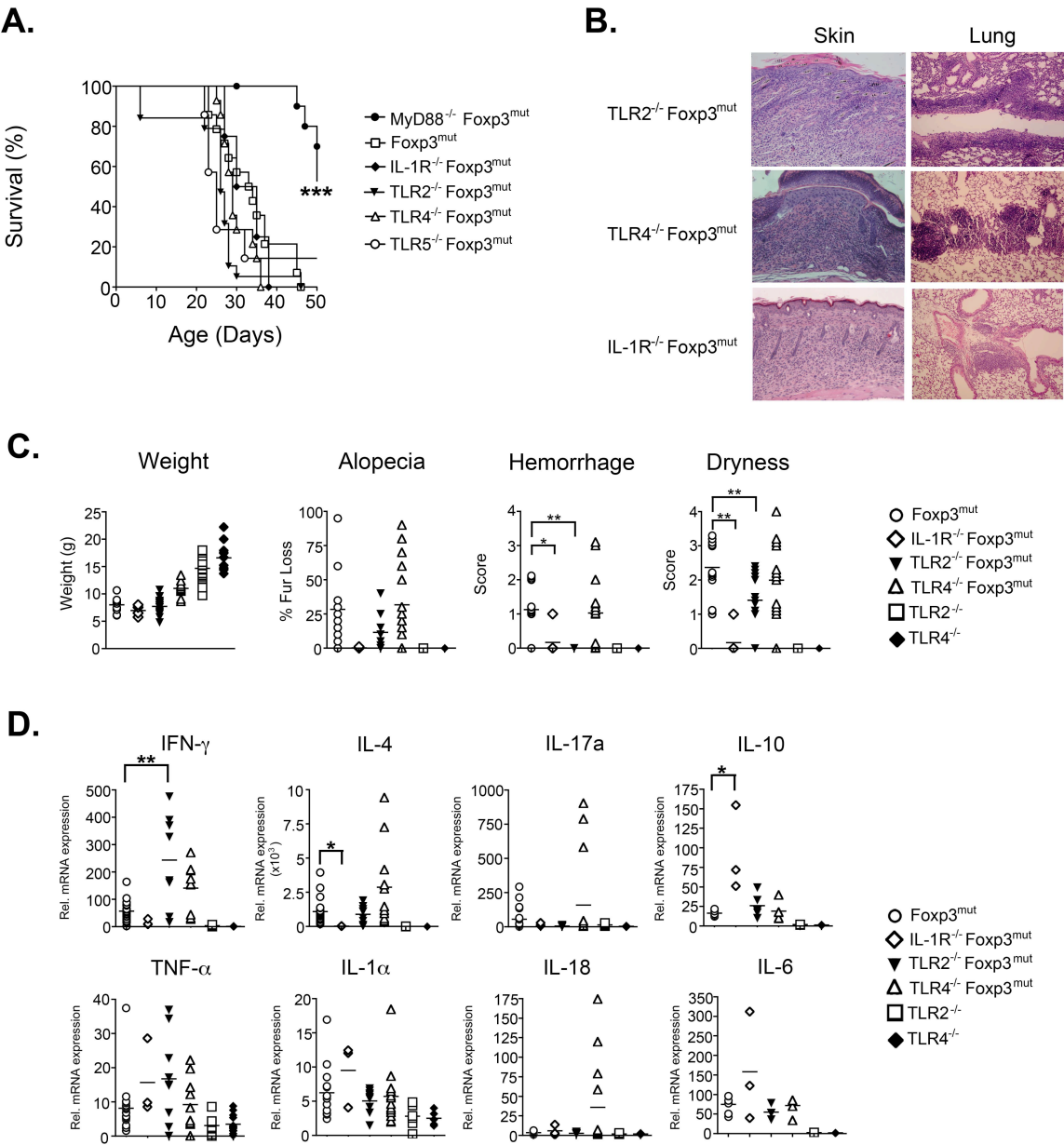
Supplemental Figure 2. Characteristics of the lymphoproliferative disease in the spleens of $\text{Foxp3}^{\text{mut}}$ versus $\text{MyD88}^{-/-}\text{Foxp3}^{\text{mut}}$ mice. **A.** Total lymphocyte counts and absolute cell numbers of CD4^{+} effector memory T cells ($\text{CD4}^{+}\text{CD62L}^{\text{low}}\text{CD44}^{\text{high}}$), CD8^{+} T cells and B220^{+} B cells in the draining lymph nodes of the respective genotype. **B.** Enumeration of IL-17-, $\text{IFN}\gamma$ - and IL-4- producing CD4^{+} T cells in the spleens of WT and mutant mice. **C.** Representative flow cytometric panels of the results shown in **B**. Results are representative of 3-5 experiments involving 5-10 mice/group.

Supplemental Figure 3. Early onset of the exaggerated autoimmune lymphoproliferation in $\text{MyD88}^{-/-}\text{Foxp3}^{\text{mut}}$ mice. Total lymphocyte counts and absolute numbers of CD4^{+} effector memory T cells ($\text{CD4}^{+}\text{CD62L}^{\text{low}}\text{CD44}^{\text{high}}$), CD8^{+} T cells and

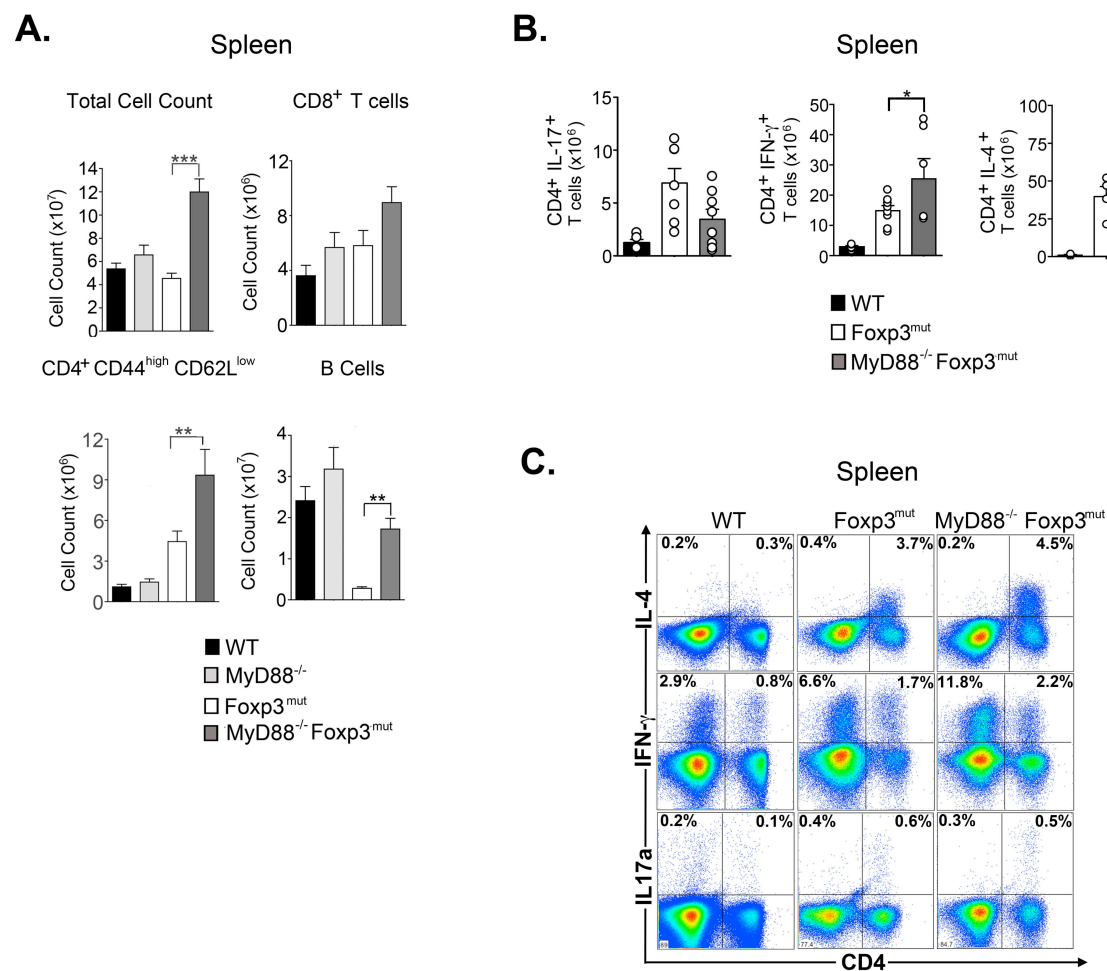
B220⁺ B cells in the draining lymph nodes of WT, MyD88^{-/-}, Foxp3^{mut} and MyD88^{-/-} Foxp3^{mut} mice were enumerated at 3 and 6 weeks of age. Results were obtained on 3-4 mice per group.

Supplemental Figure 4. Flow cytometric analysis of CD ligand (CD30L) and OX40 in T cells of WT, Foxp3^{mut} and MyD88^{-/-}Foxp3^{mut} mice. **A.** Flow cytometric profiles of OX40 and CD30L expression in CD4⁺ naïve (CD62L^{high}CD44^{low}) and effector memory (CD62L^{low}CD44^{high}) T cells isolated from the draining lymph nodes and lungs of the respective mouse strains. **B.** Percent expression of OX40 and CD30L in CD4⁺ effector memory as compared to naïve T cells in the respective mouse strains. Results were obtained on 3-9 mice per group.

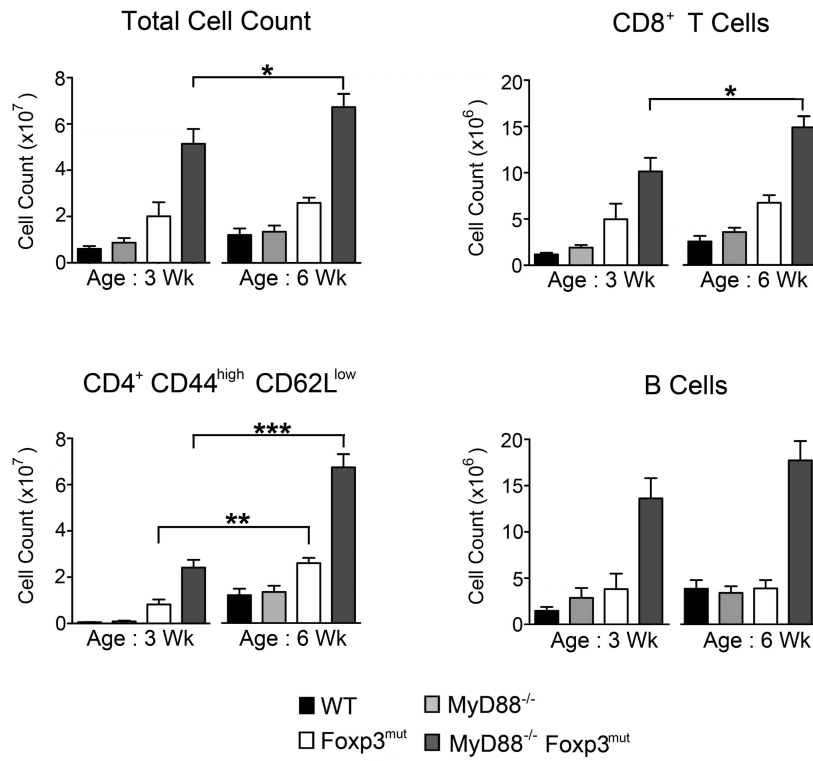
Supplemental Figure 1



Supplemental Figure 2



Supplemental Figure 3



Supplemental Figure 4

