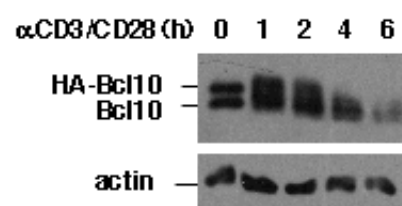
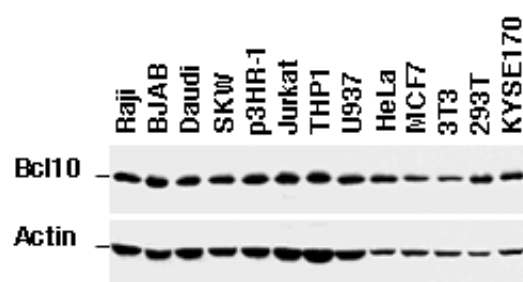


Supplementary Fig. S1 Hu



Supplementary Fig. S2 Hu



Supplementary Figure legend

Figure S1. Expression and degradation of exogenous Bcl10 in human primary T cells. 5×10^6 human primary T lymphocytes were transfected with 1 μ g of HA-Bcl10 or GFP (C) by Amaxa electroporator. 20 hr later, cells were stimulated with anti-CD3/CD28 beads for the indicated durations. Cell lysates were analyzed by Western blot with an anti-Bcl10 antibody. The transfection efficiency is around 60% based on GFP expression.

Figure S2. Expression of Bcl10 in various cell types. B cell-derived leukemia/lymphoma cell lines Raji, BJAB, Daudi, SKW6, P3HR-1, T cell leukemia cell line Jurkat, monocyte leukemia cell lines THP1 and U937, and breast carcinoma MCF7 cells were maintained in complete RPMI-1640 medium. Human embryonic kidney 293T cells, cervical carcinoma HeLa cells, esophageal squamous cell carcinoma cell line KYSE170 (a gift from Dr. Yutaka Shimada, Kyoto University, Japan), and murine fibroblast 3T3 cells were cultured in complete Dulbecco's Modified Eagle's medium. Cell extracts were probed with an anti-Bcl10 antibody. The levels of actin are also shown.