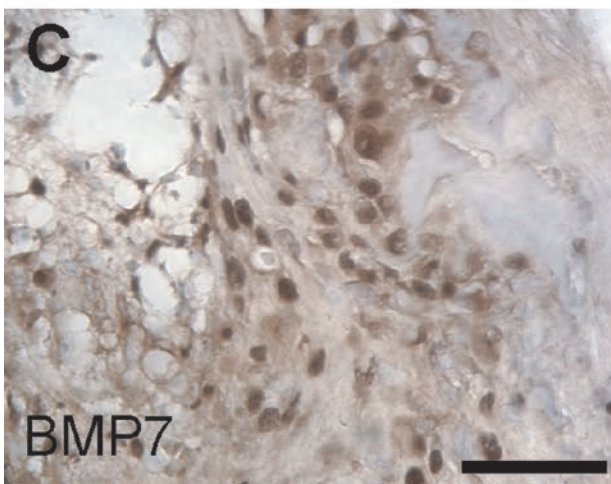
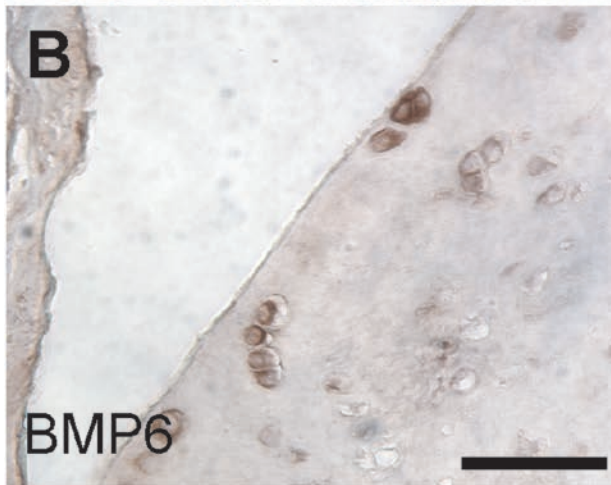
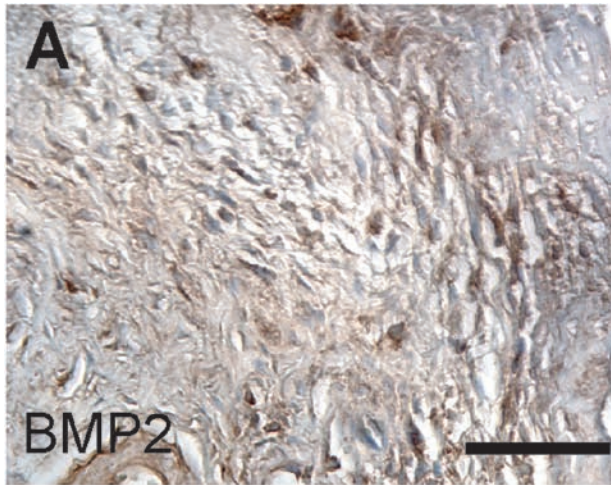


Supplemental Figure 1

Different stages of ankylosing enthesitis in DBA/1 mice. **(A)** Early proliferative/inflammatory stage with fibroblast-like cell expansion at the enthesis (arrows). Erosion of the underlying bone is also present (arrows) (T = tendon, P = phalange). **(B)** Normal enthesis. **(C)** Early stages of cartilage formation (arrows). **(D)** Normal interphalangeal joint without ectopic cartilage or bone formation. **(E)** Enthesial chondrogenesis with differentiation into hypertrophic chondrocytes (arrows). **(F)** Late stage of ankylosing enthesitis with bone formation (white arrows) leading to progressive ankylosis. The border of the normal bone is indicated (black arrows). (Bar, 400 μ m in A-D and F, Bar, 100 μ m in E).



Supplemental Figure 2

BMPs in human enthesitis in spondyloarthropathy.

(A) BMP2 positive cells are found in the proliferative reaction. (B) BMP-6 is found in differentiated chondrocytes. (C) BMP7 is found in prehypertrophic and maturing chondrocytes. (Bar, 50 μ m).