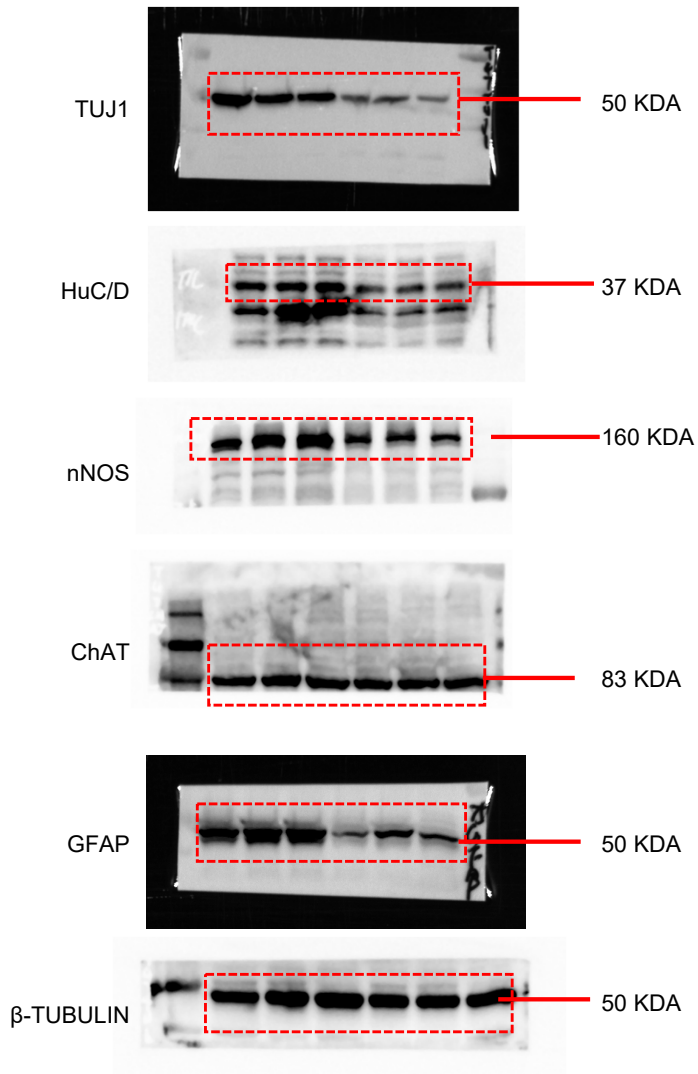
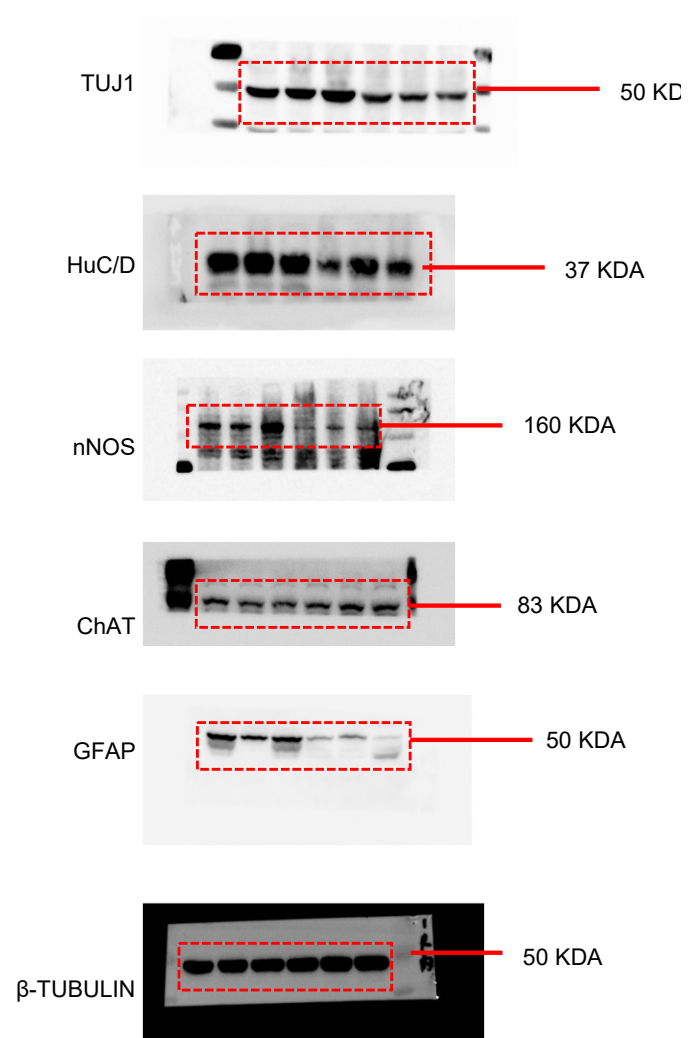


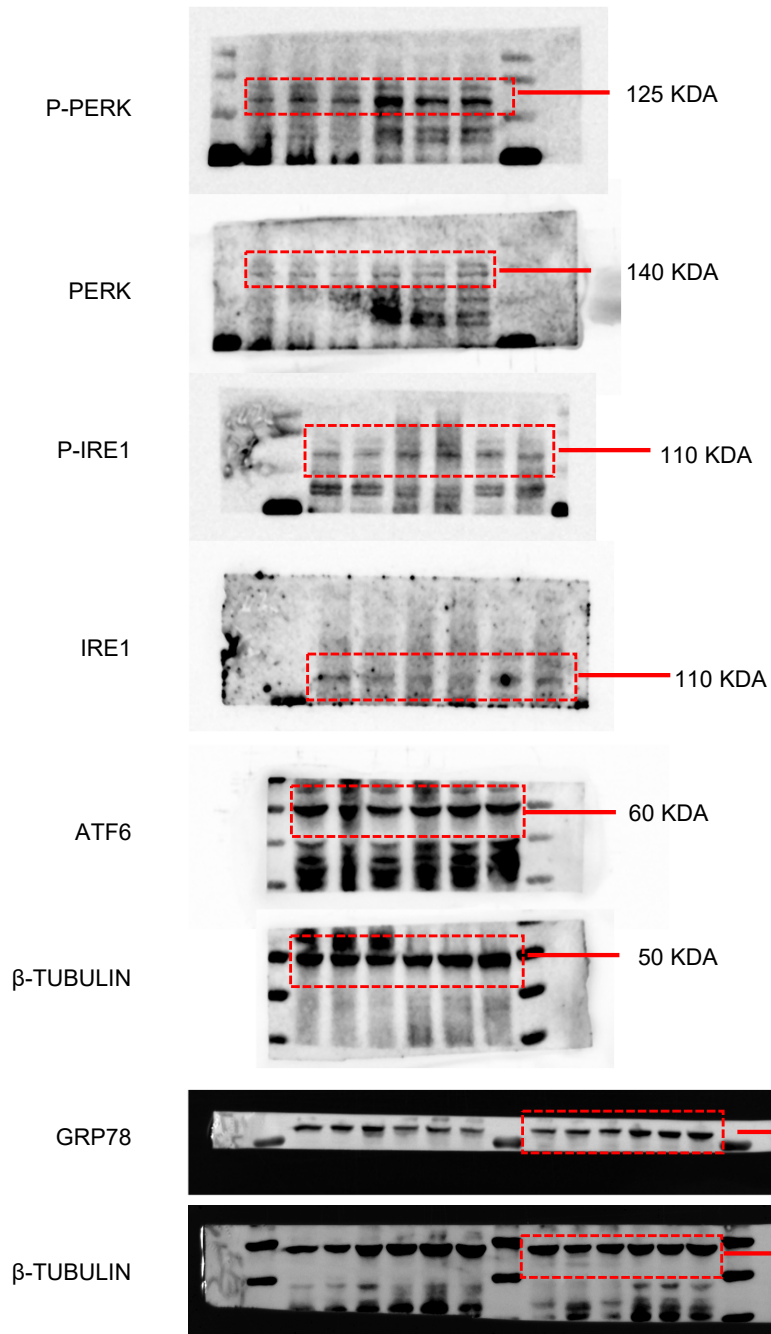
Full unedited blot for Figure 1D



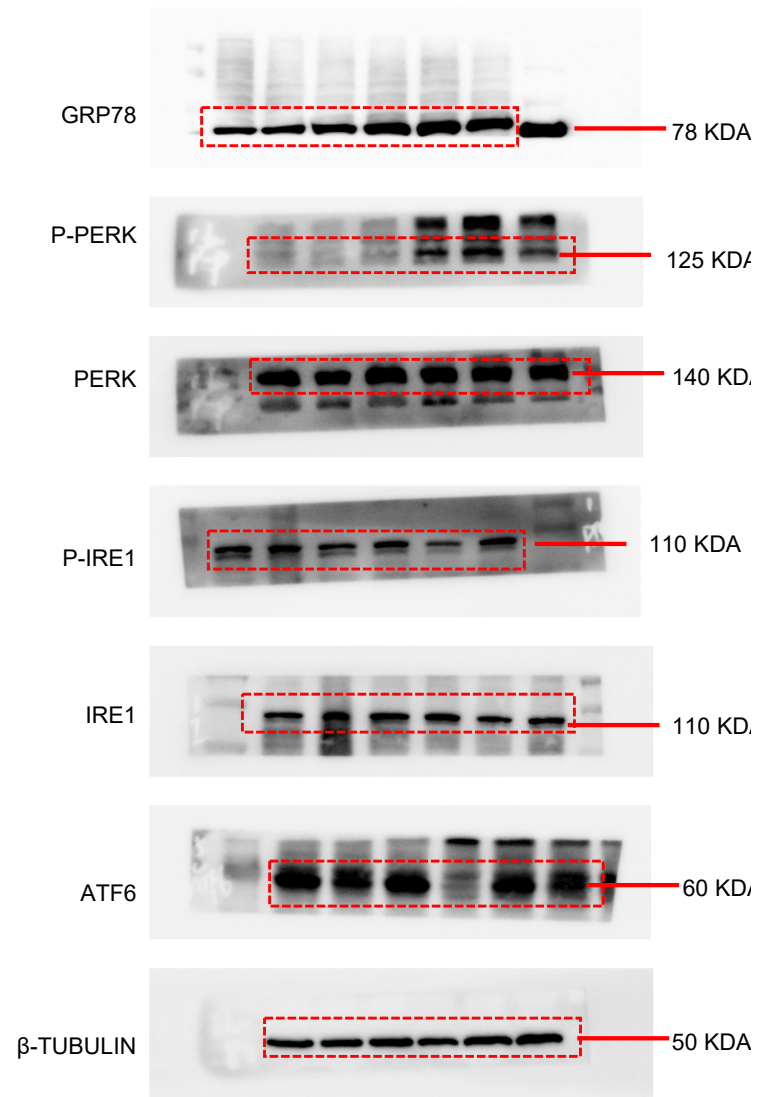
Full unedited blot for Figure 1E



Full unedited blot for Figure 2C

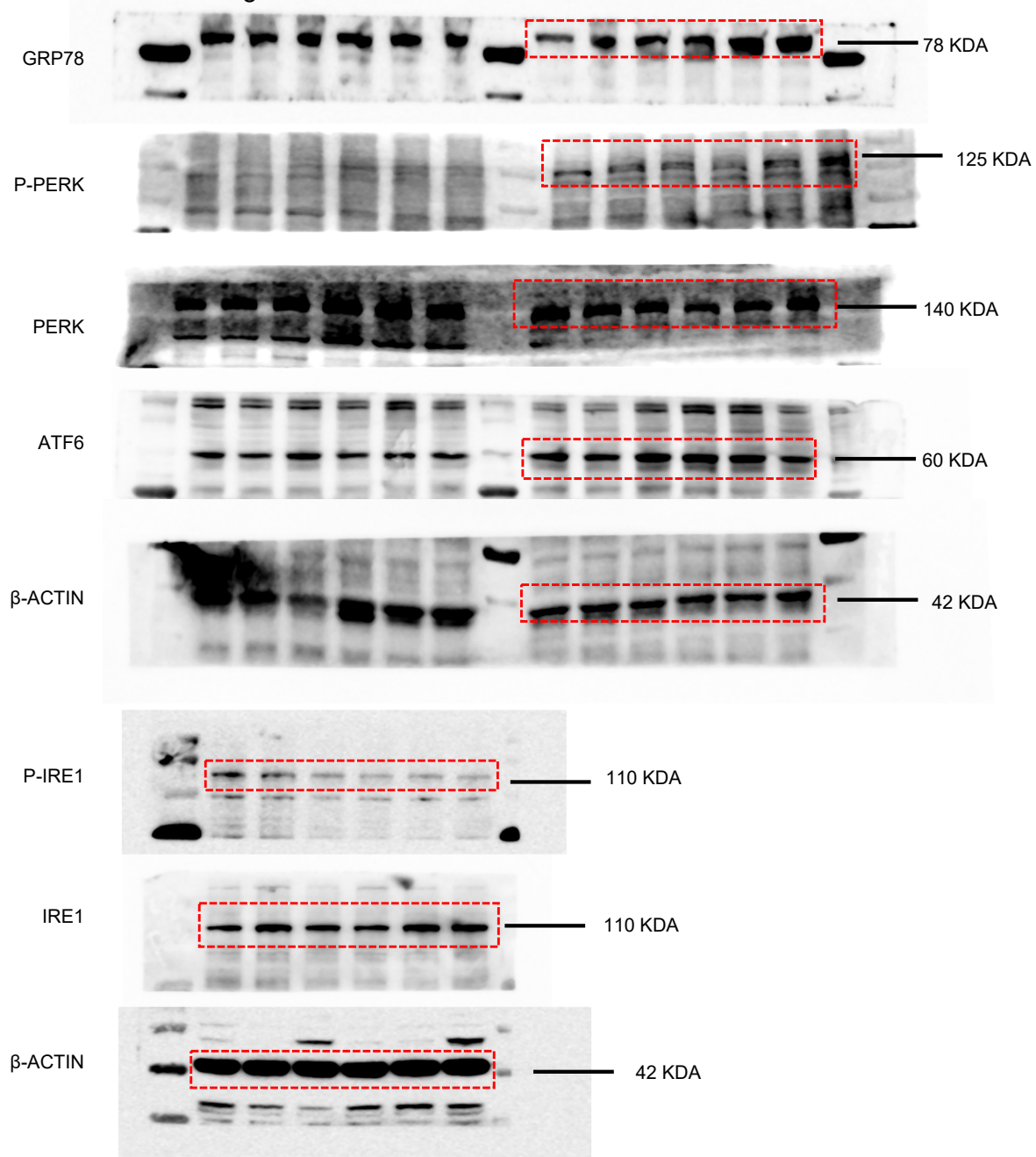


Full unedited blot for Figure 2D

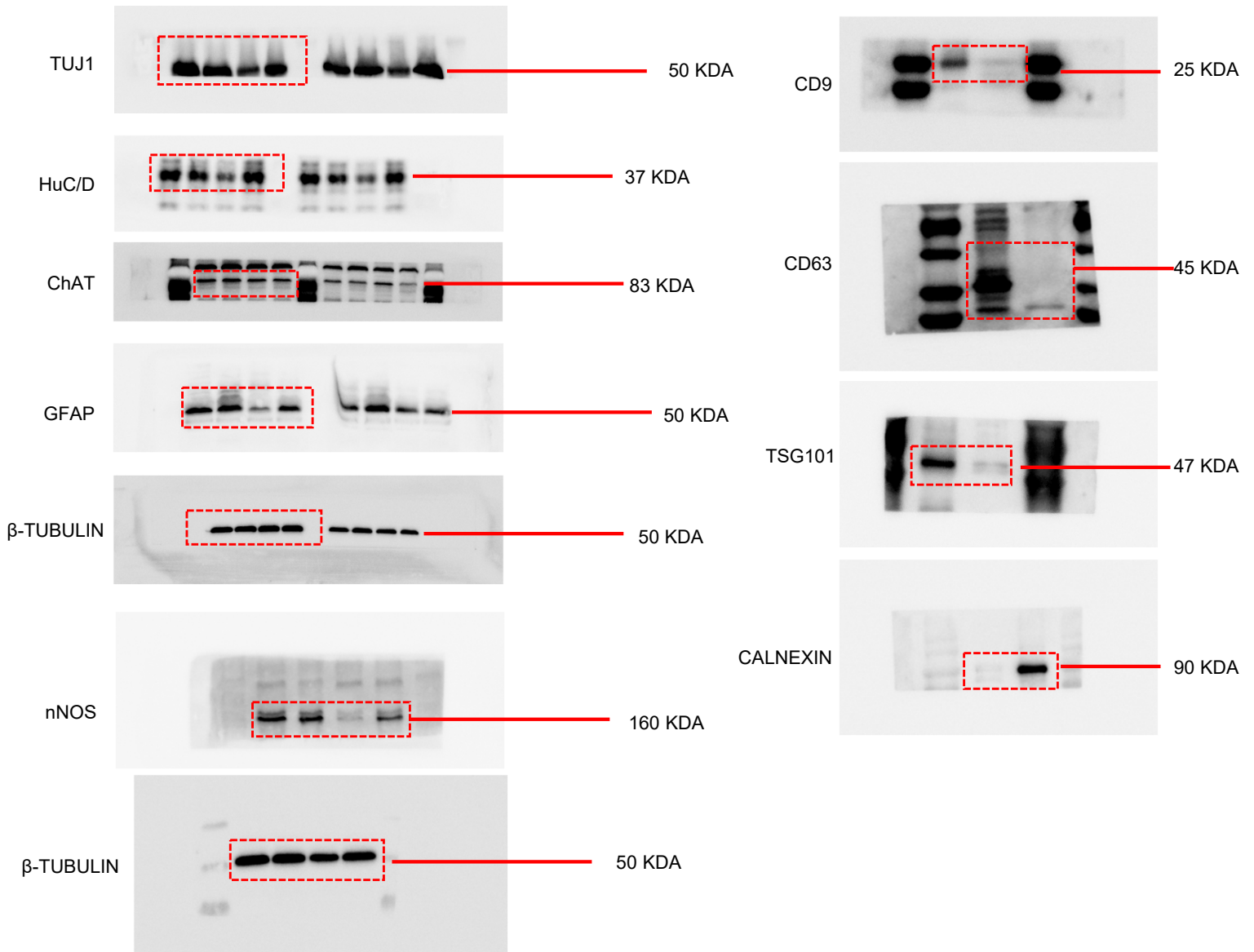


In Figure 2C, six tissue samples (control, and DM groups) were run in parallel gel on the same day for the GRP78 detection, and the loading control for it is shown below the blot.

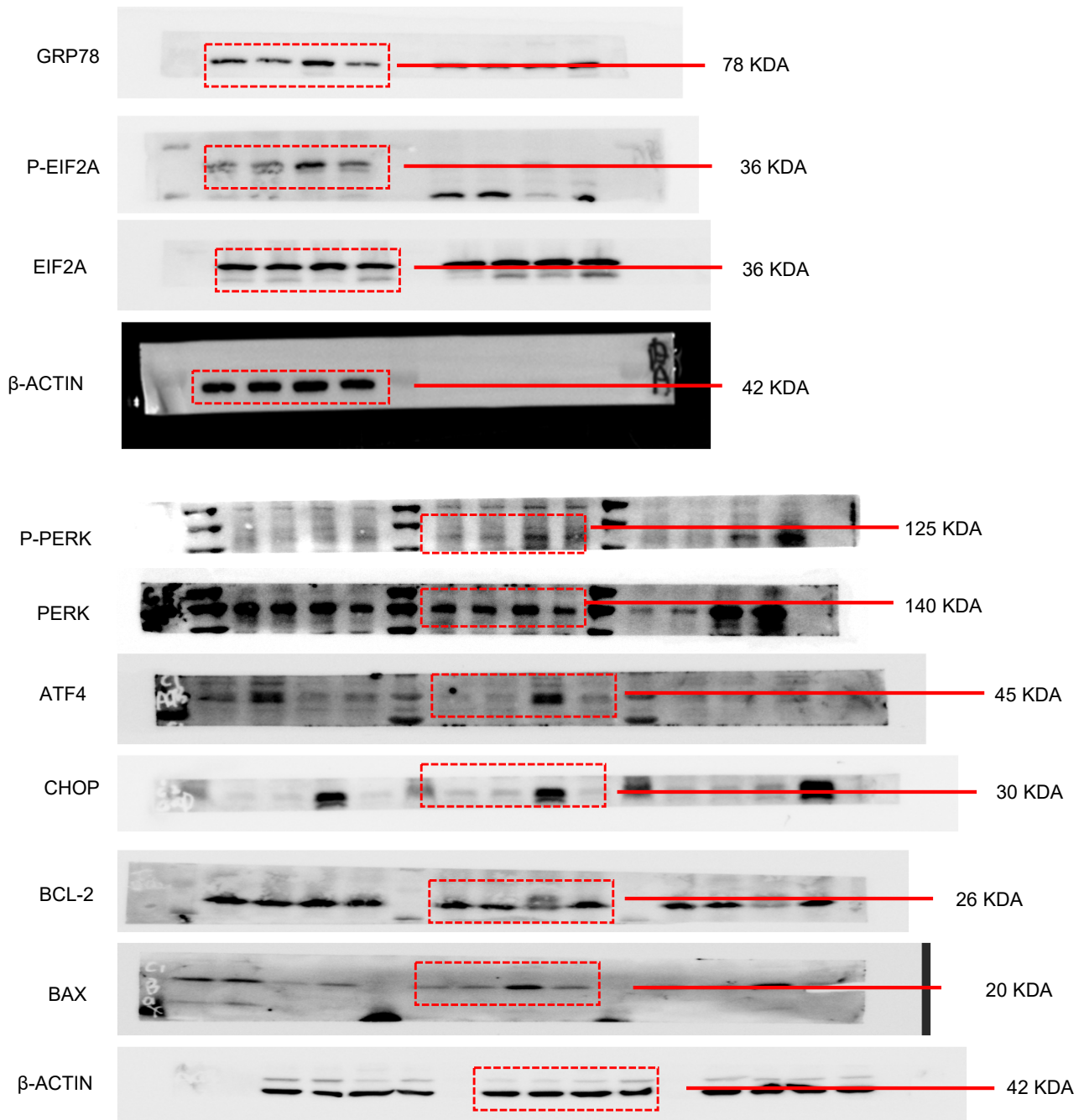
Full unedited blot for Figure 2G



In Figure 2G, six ENPCs samples (control, mannitol and high glucose groups) were run in parallel gel on the same day for the P-IRE1 and IRE1 detection, and the loading control for it is shown below the blot.

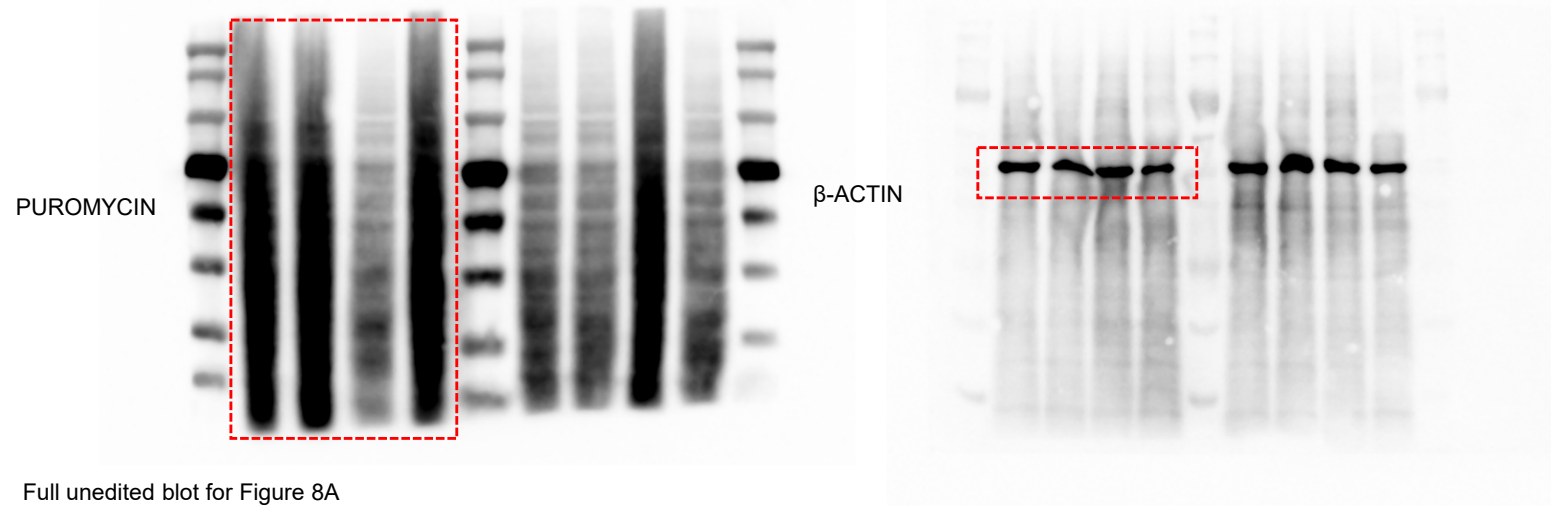


In Figure 4E, four tissue samples (Con, Con+4-PBA, DM, DM+4-PBA) were run in parallel gel on the same day for the nNOS detection, and the loading control for it is shown below the blot.

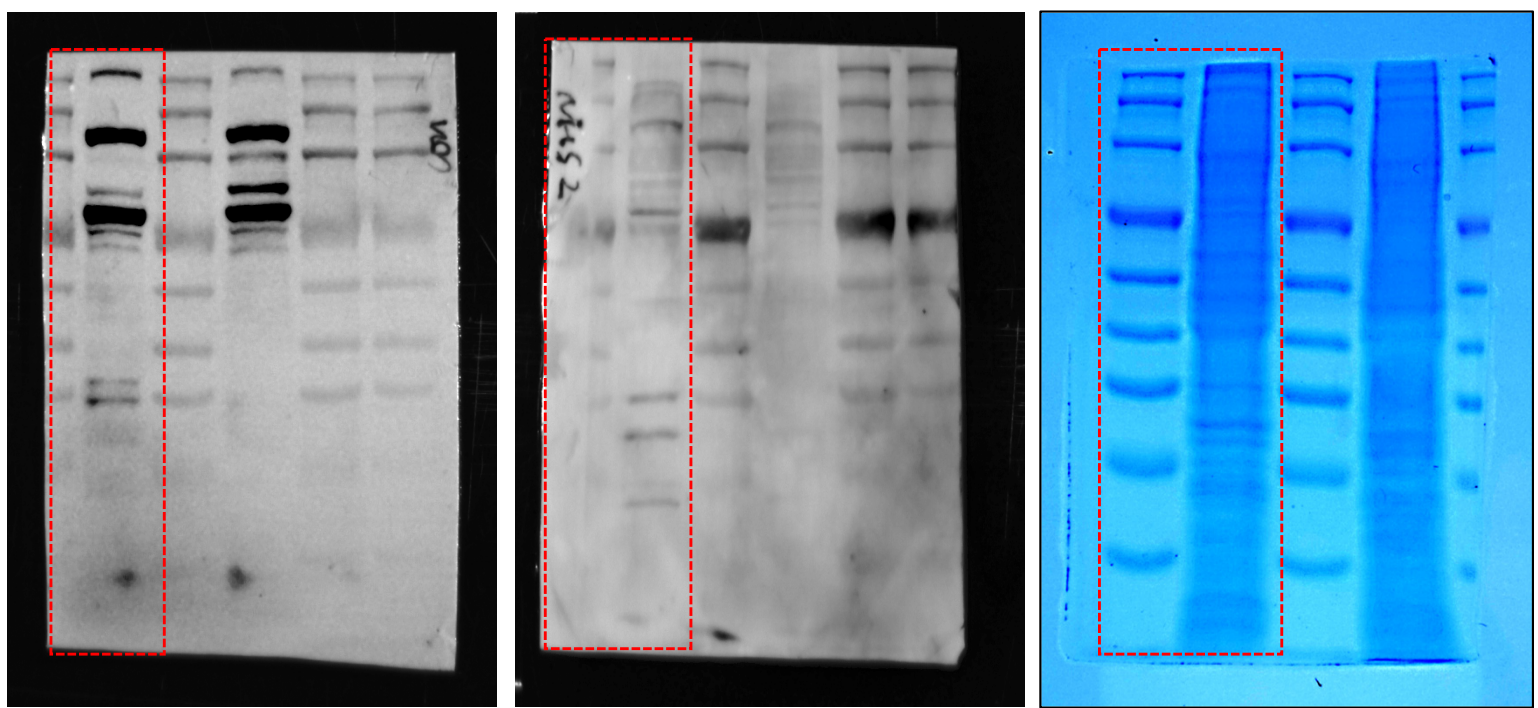


In Figure 5D, four tissue samples (Con, Con+MVs, Glu, Glu+MVs) were run in parallel gel on the same day for the GRP78, P-EIF2A, and EIF2A detection, and the loading control for it is shown below the blot.

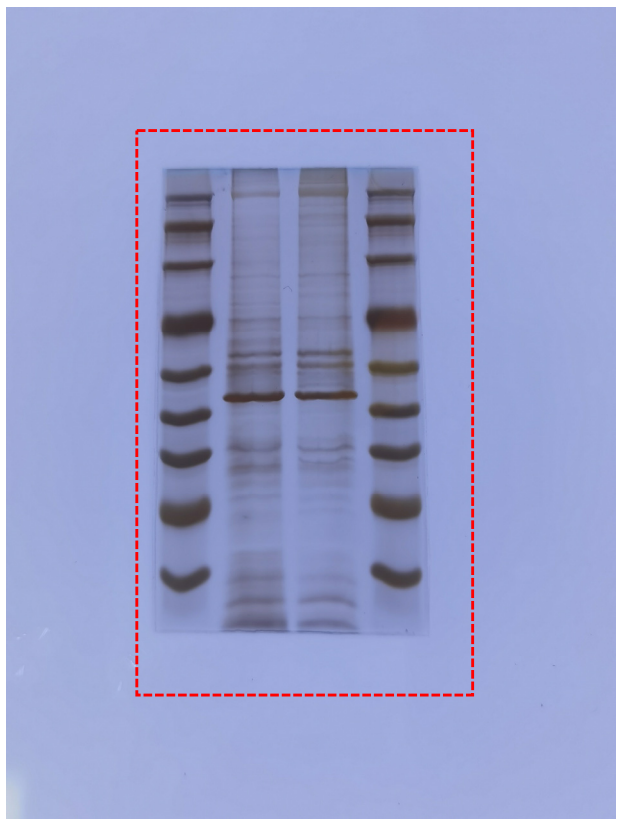
Full unedited blot for Figure 5F



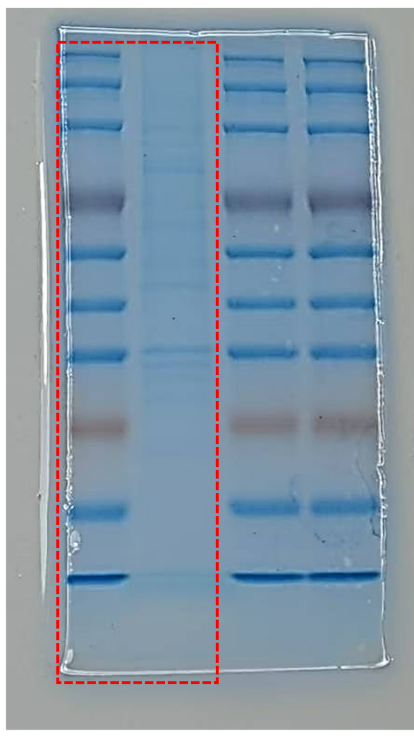
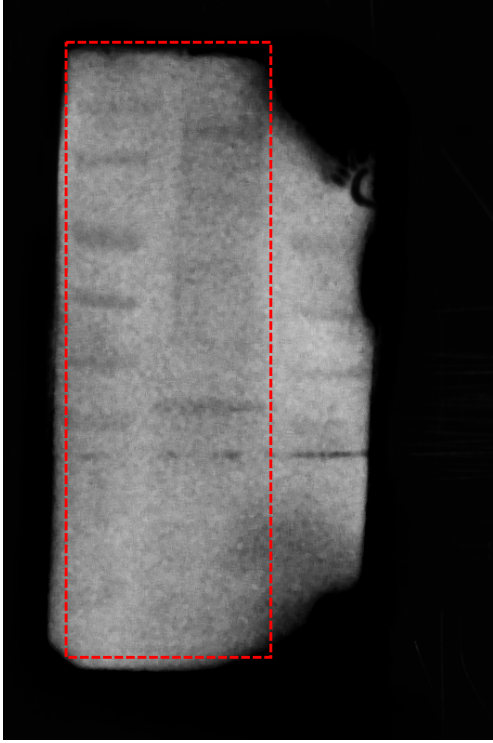
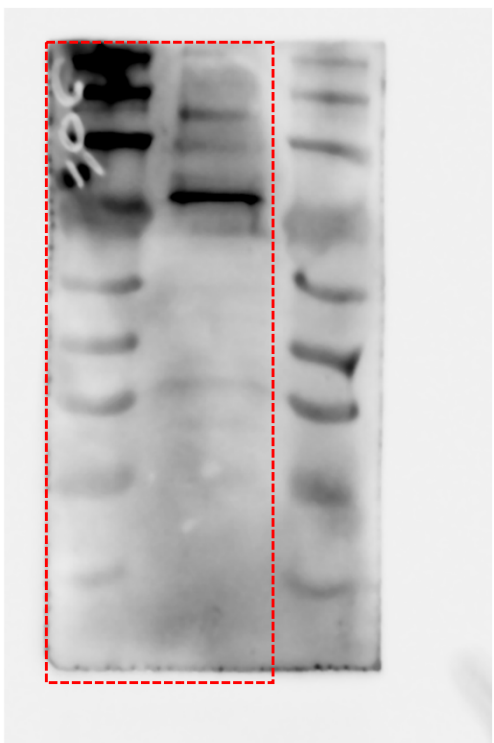
Full unedited blot for Figure 8A



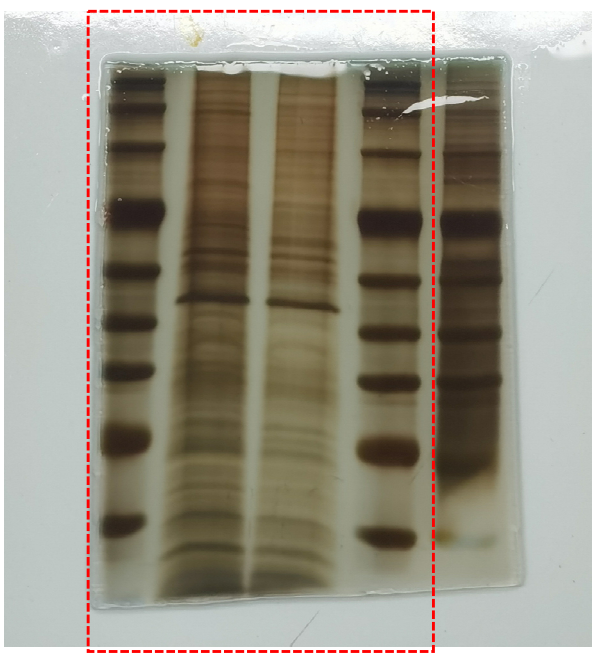
Full unedited blot for Figure 8B



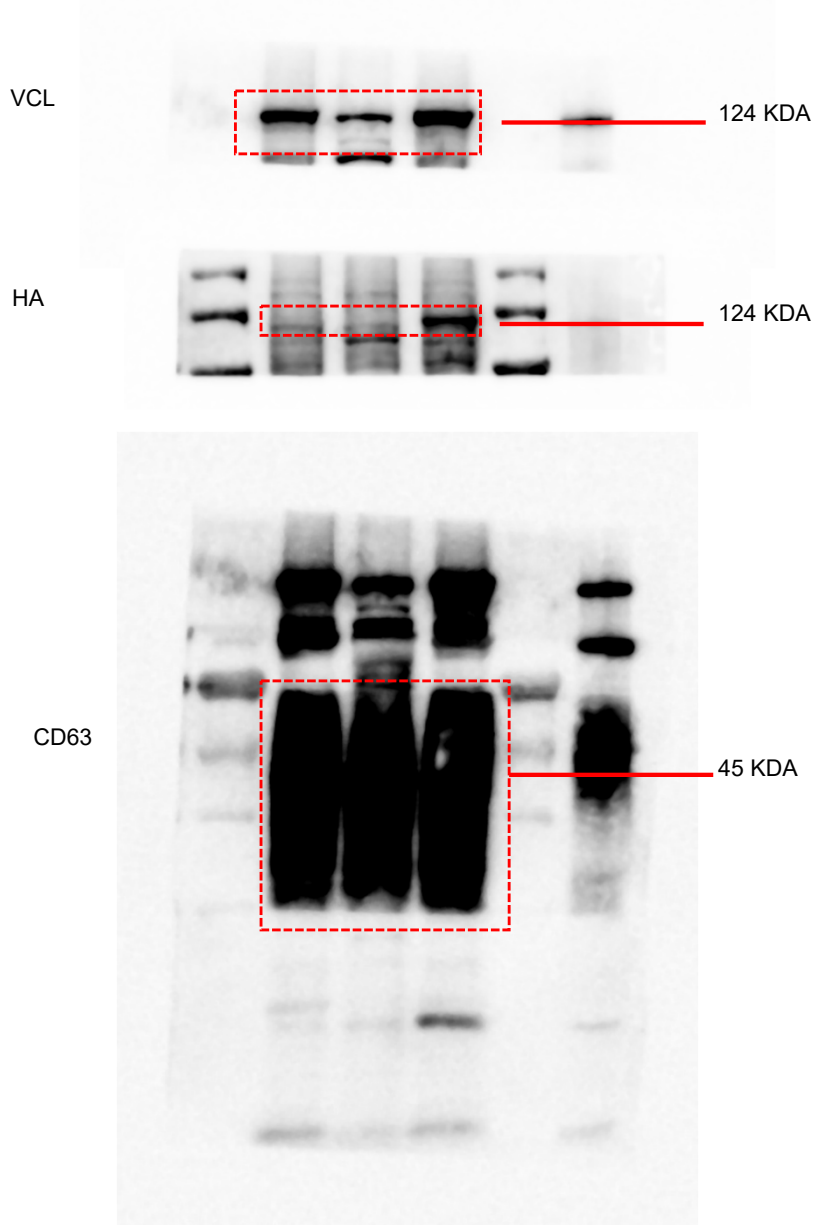
Full unedited blot for Figure 8D



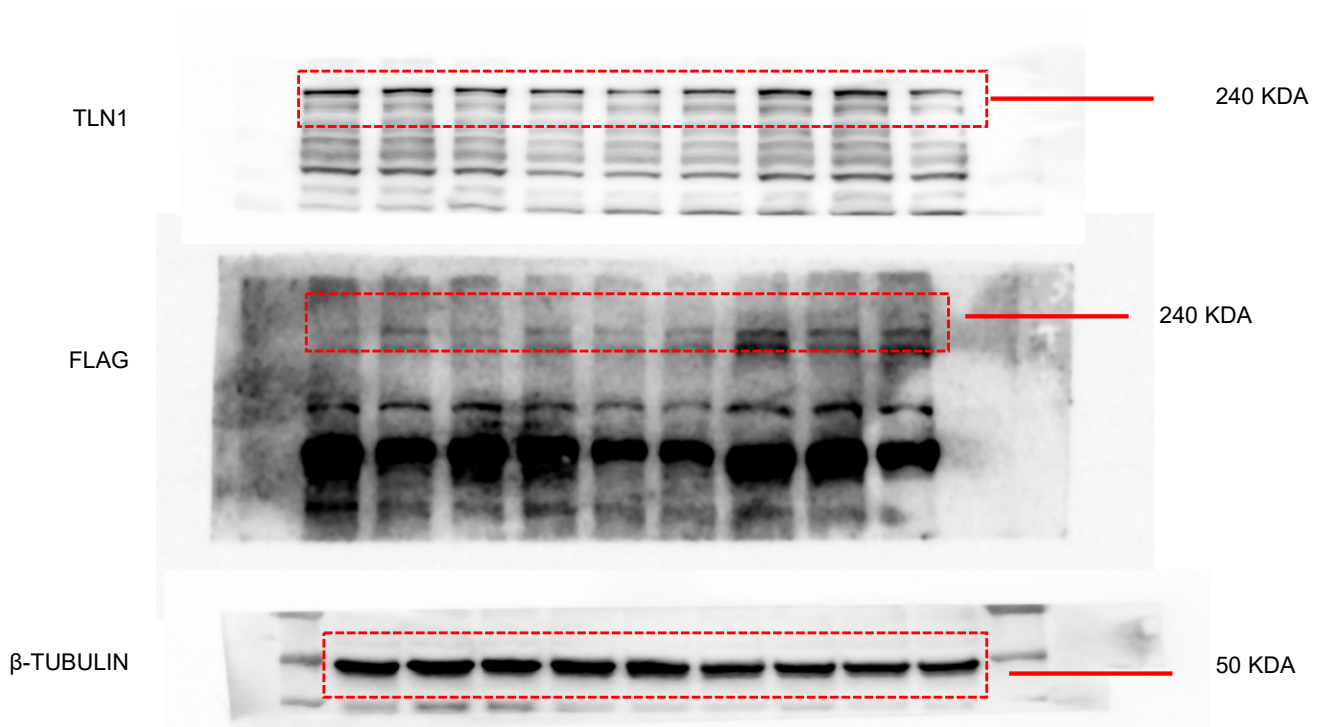
Full unedited blot for Figure 8E



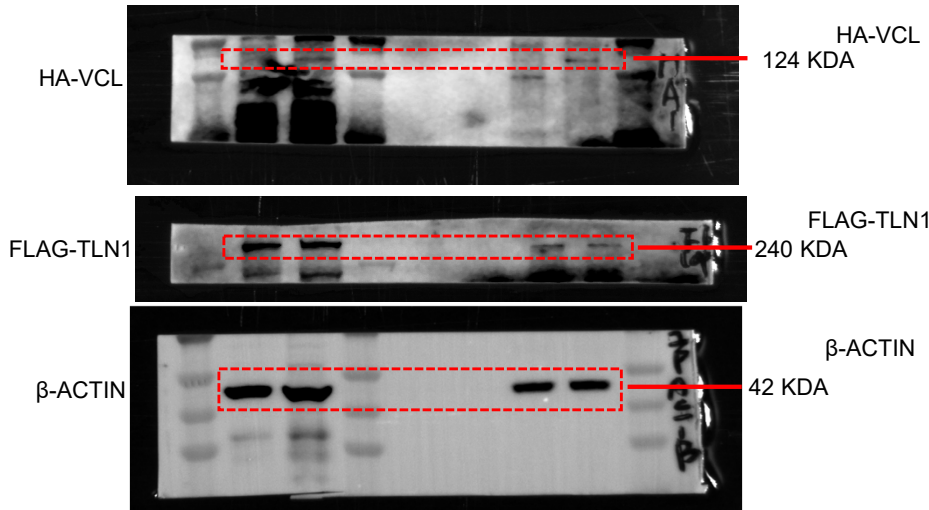
Full unedited blot for Figure 8G



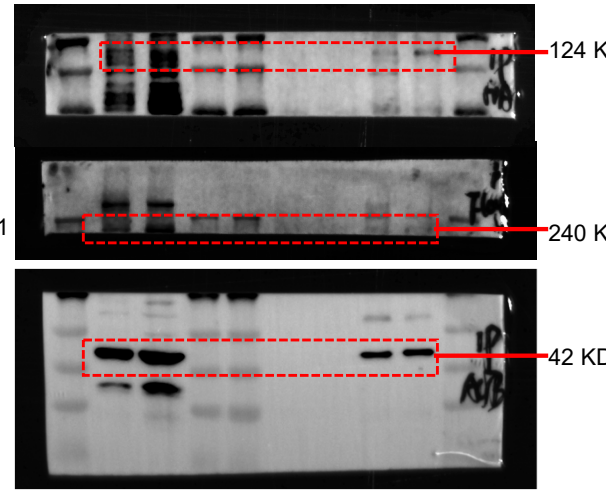
Full unedited blot for Figure 8H

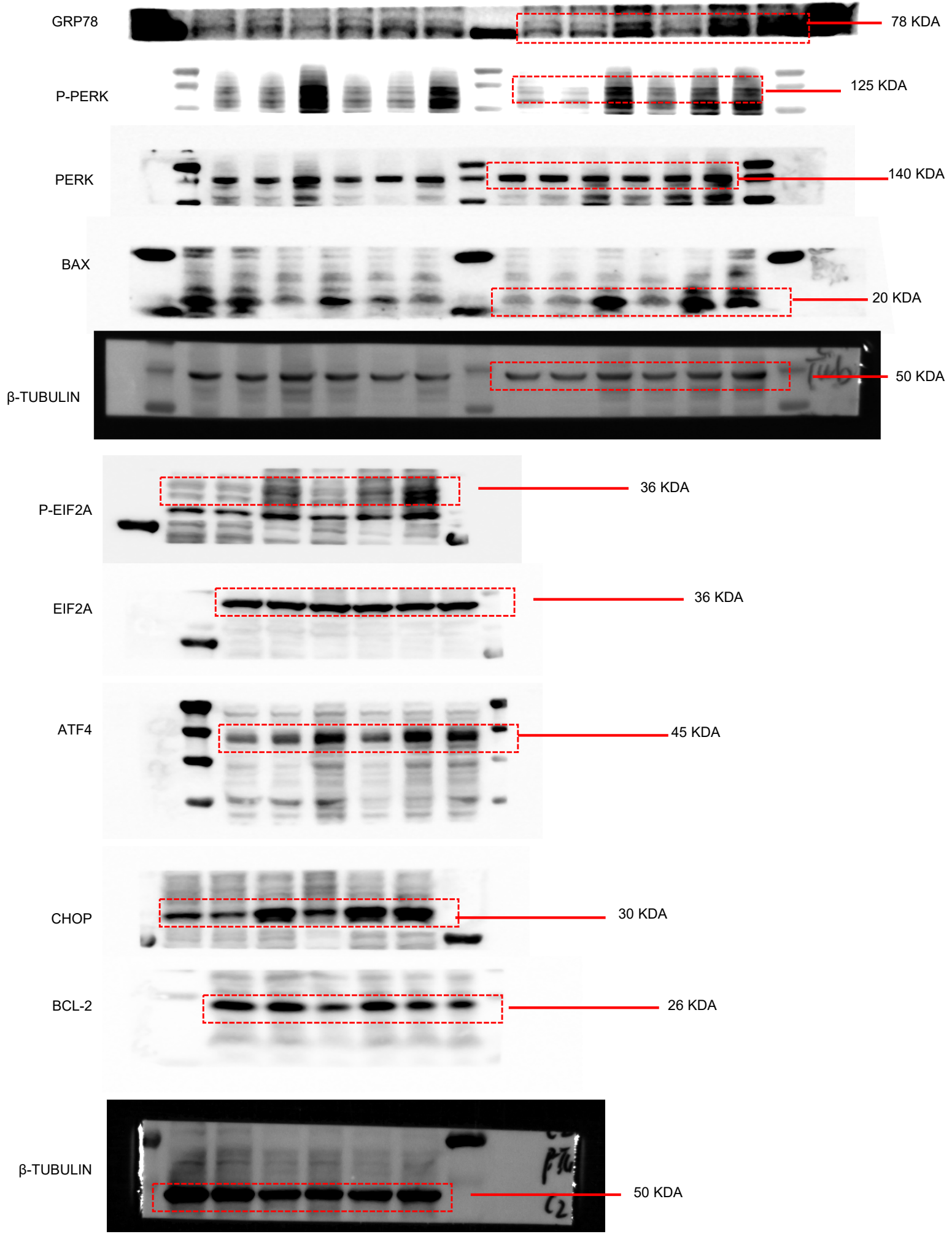


Full unedited blot for Figure 8I



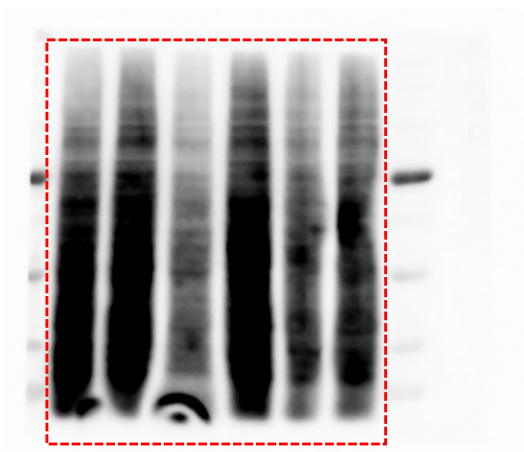
Full unedited blot for Figure 8J



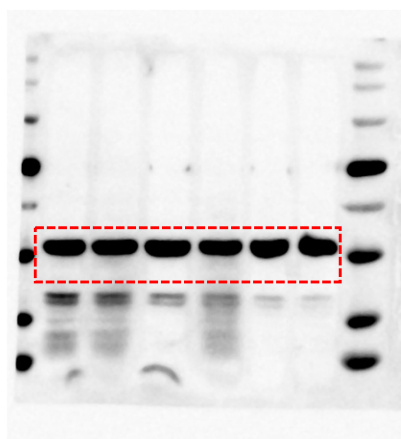


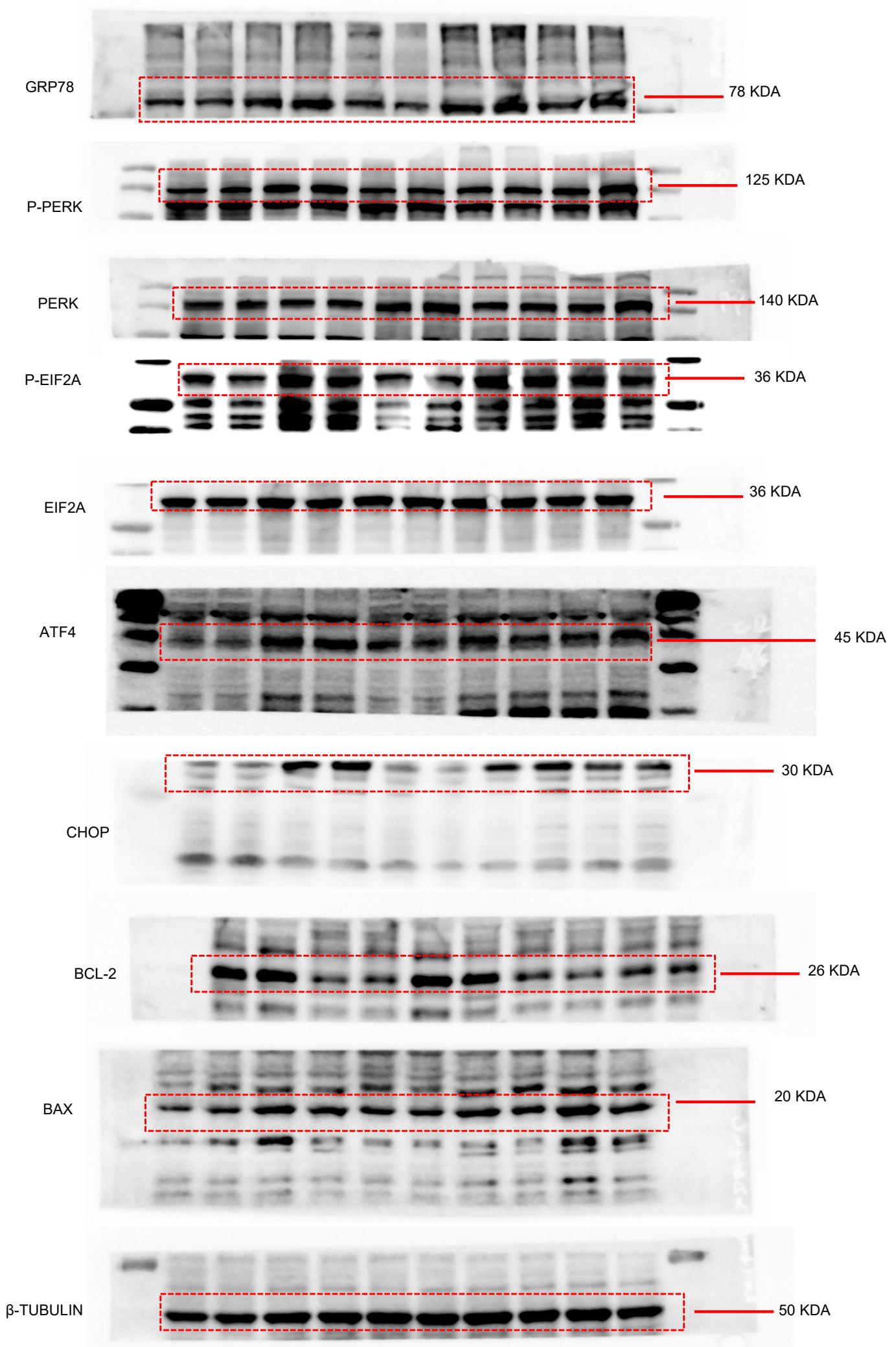
In Figure 9H, six cell samples were run in parallel gel on the same day for GRP78, P-PERK, PERK, and BAX detection, and the loading control for it is shown below the blot.

PUROMYCIN

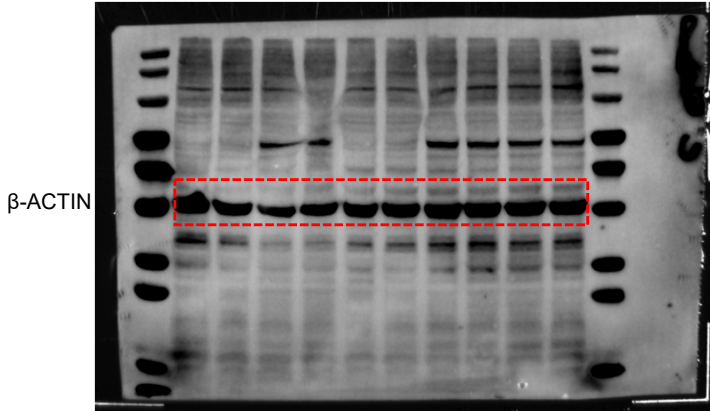
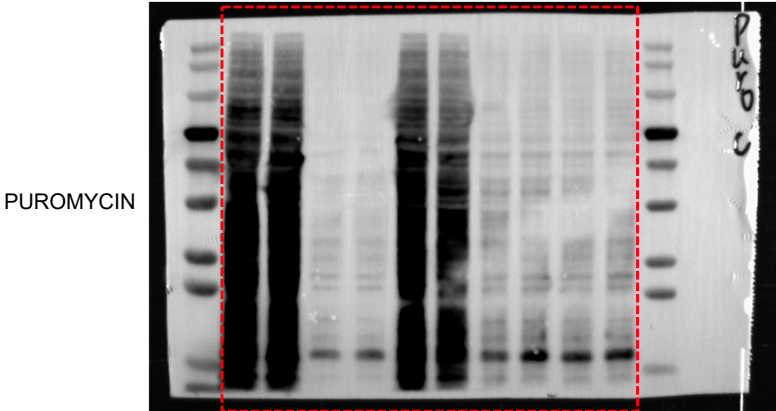


β -ACTIN

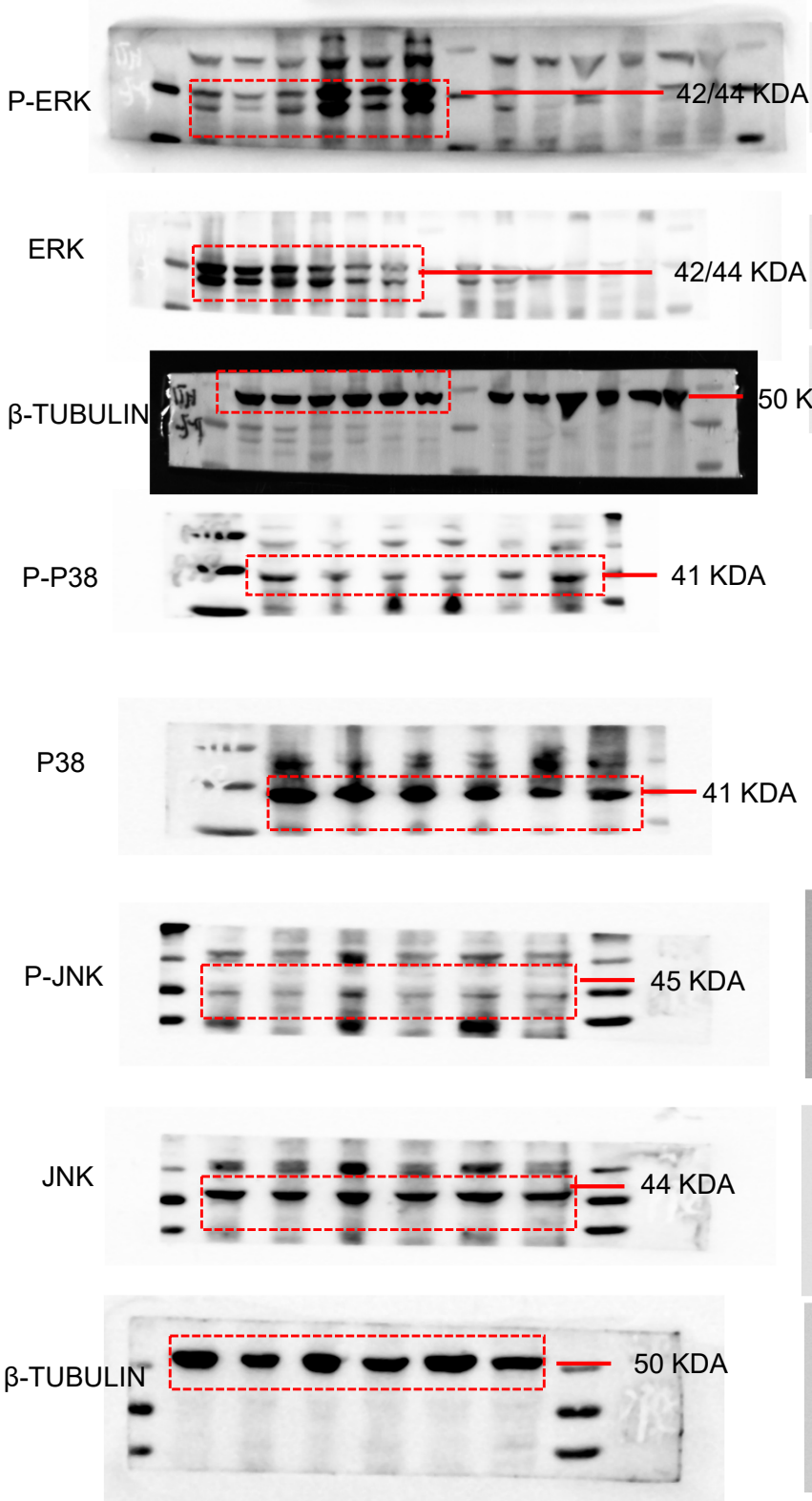




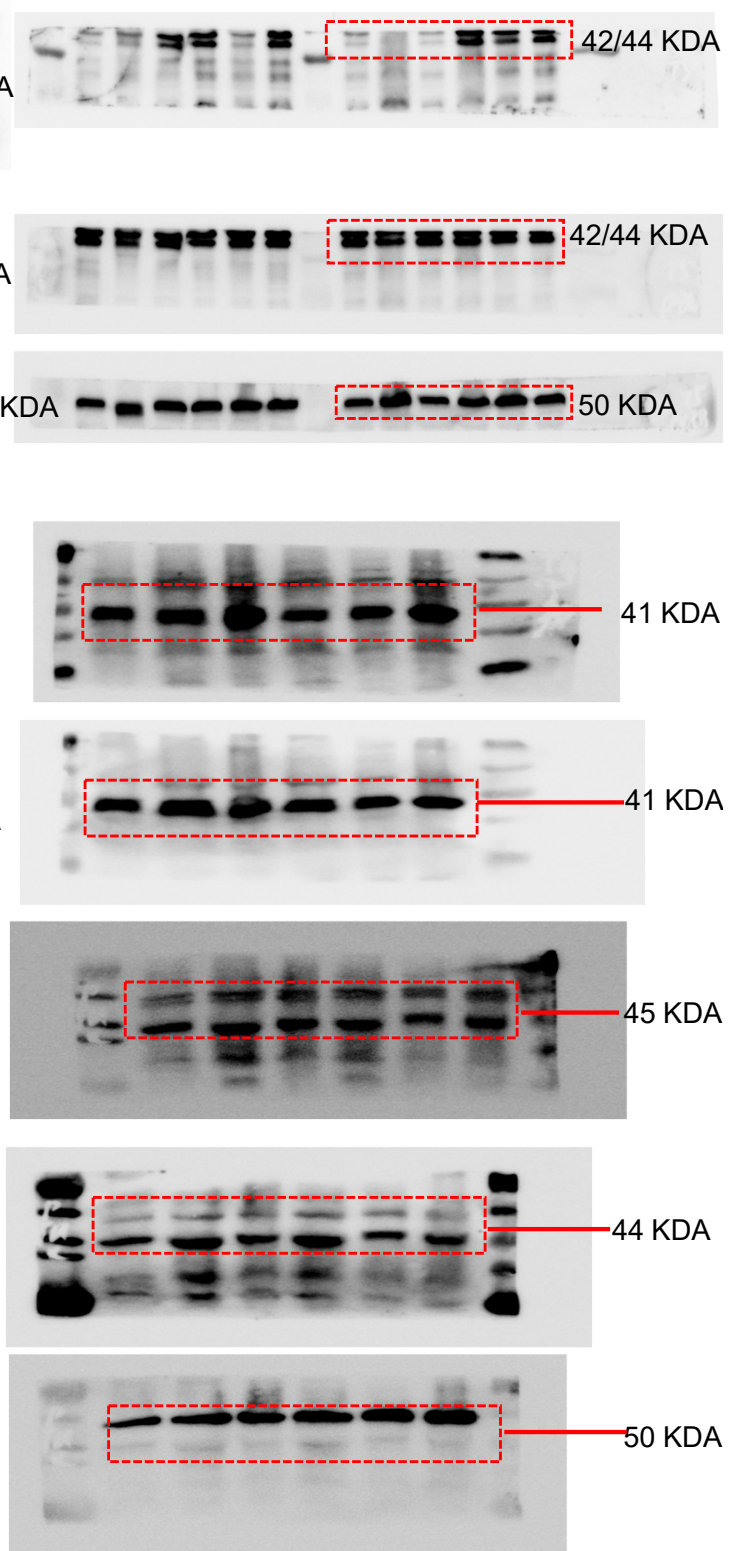
Full unedited blot for Figure 10F



Full unedited blot for Figure 11D

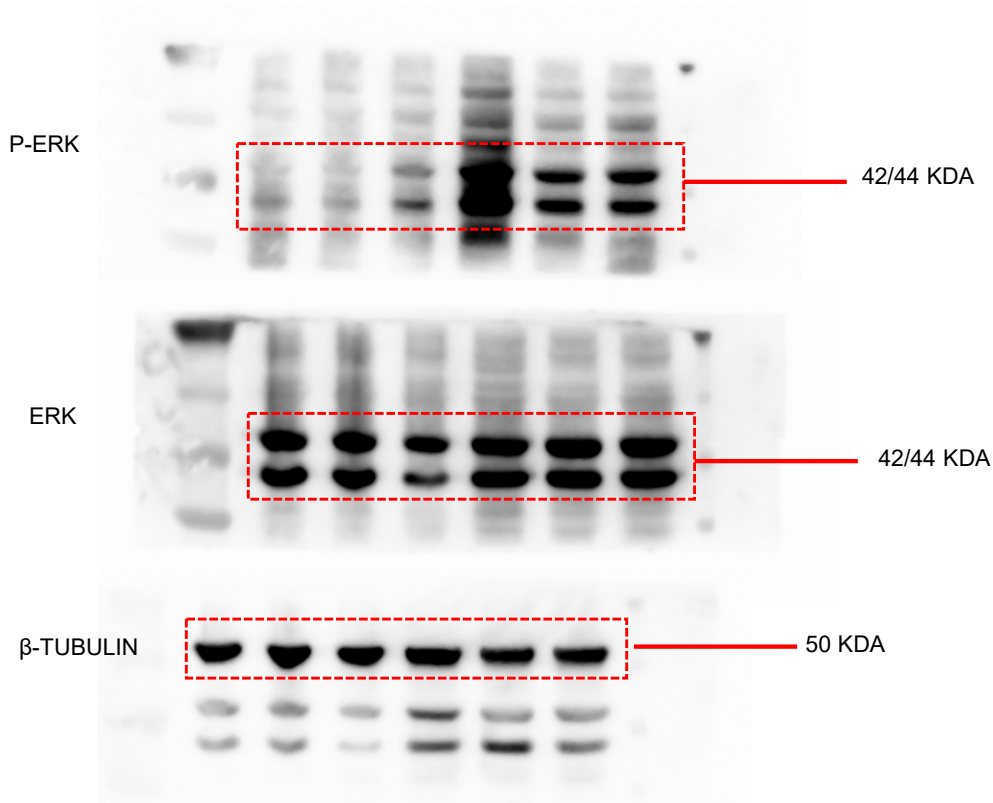


Full unedited blot for Figure 11E

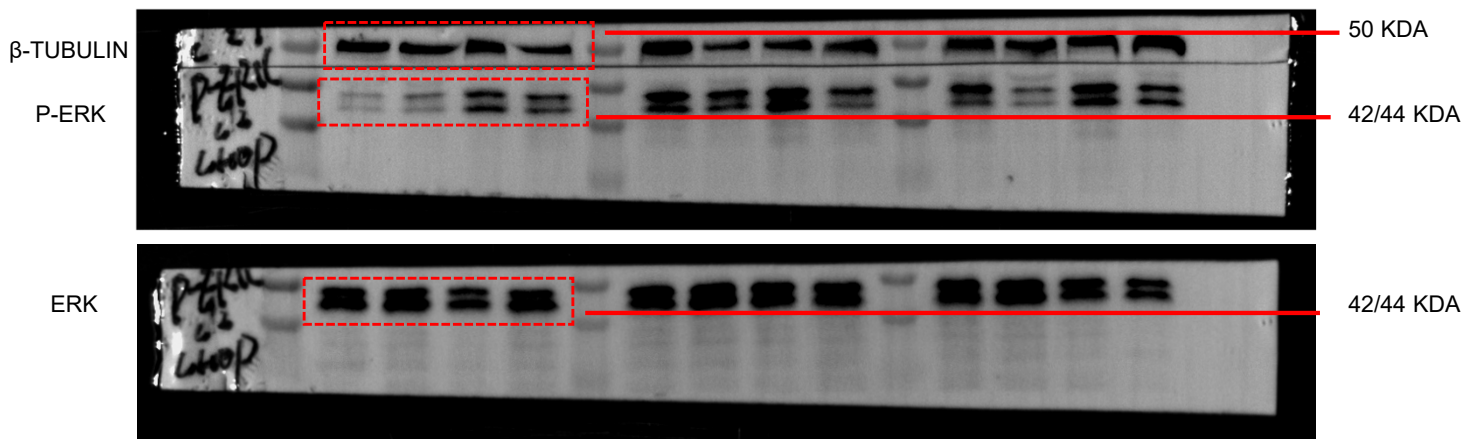


In Figure 11D and E, six samples (control and DM group) from human and mouse tissues were run in parallel gel on the same day for the P-ERK and ERK detection, and the loading control for it is shown below the blot.

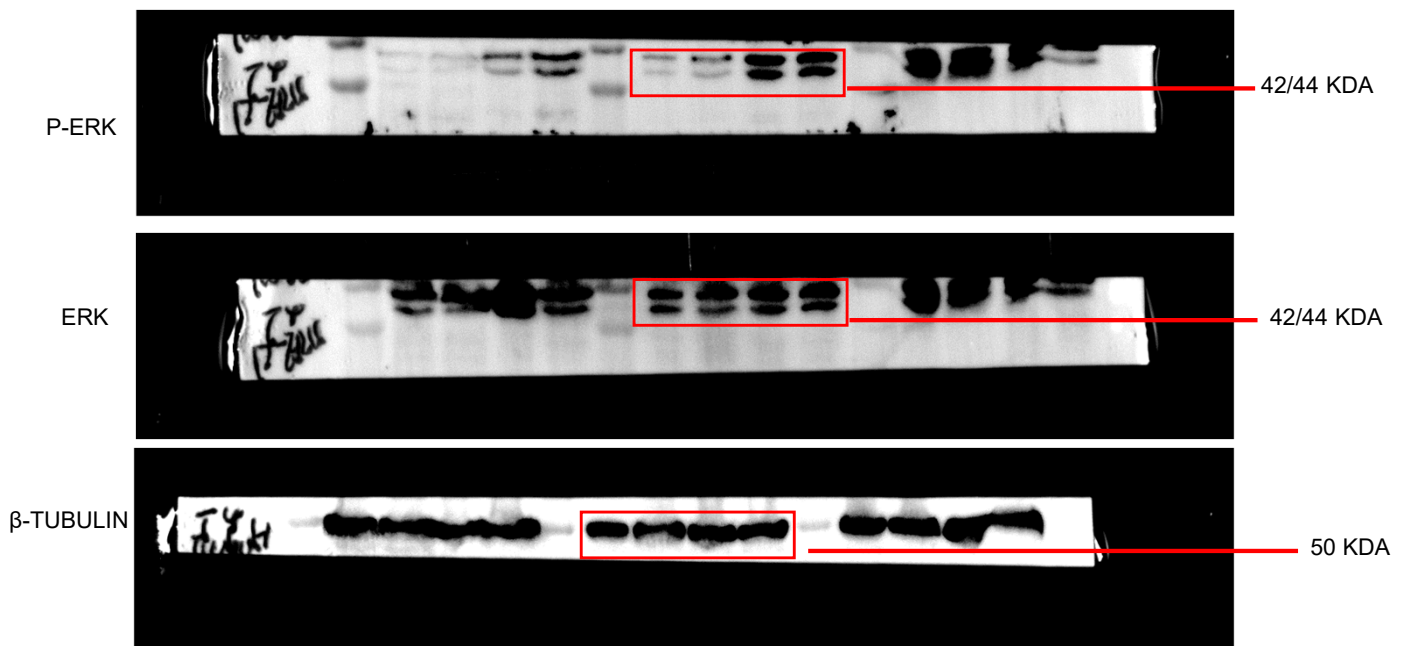
Full unedited blot for Figure 11F

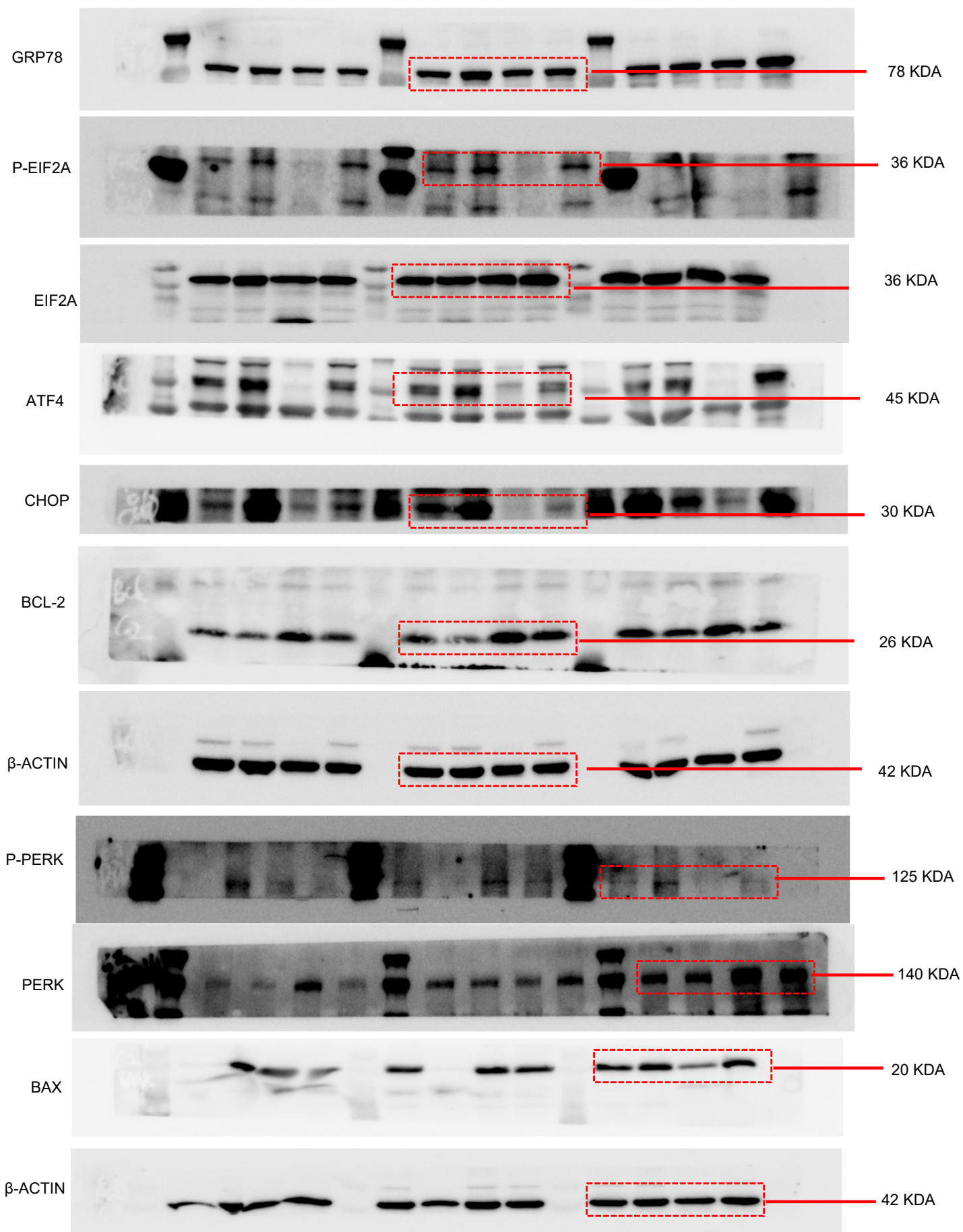


Full unedited blot for Figure 11H



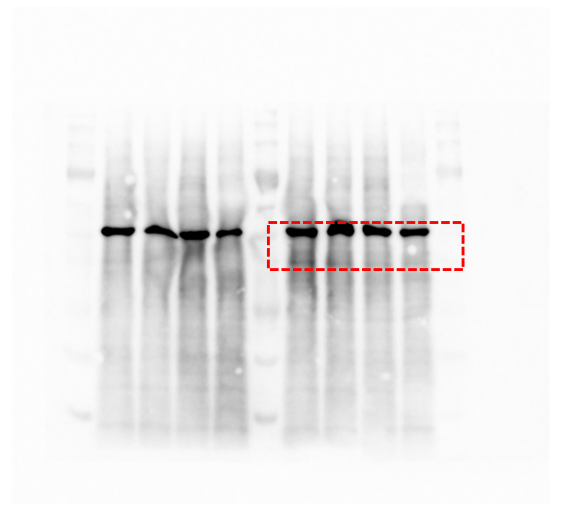
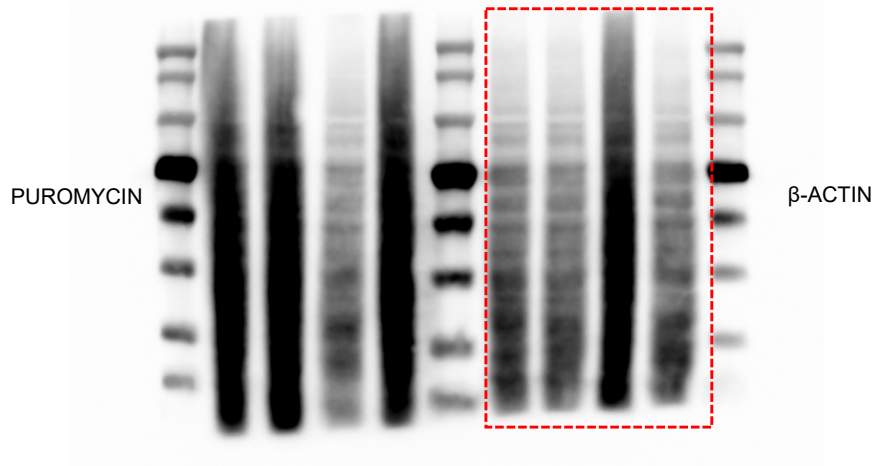
Full unedited blot for Figure 11J

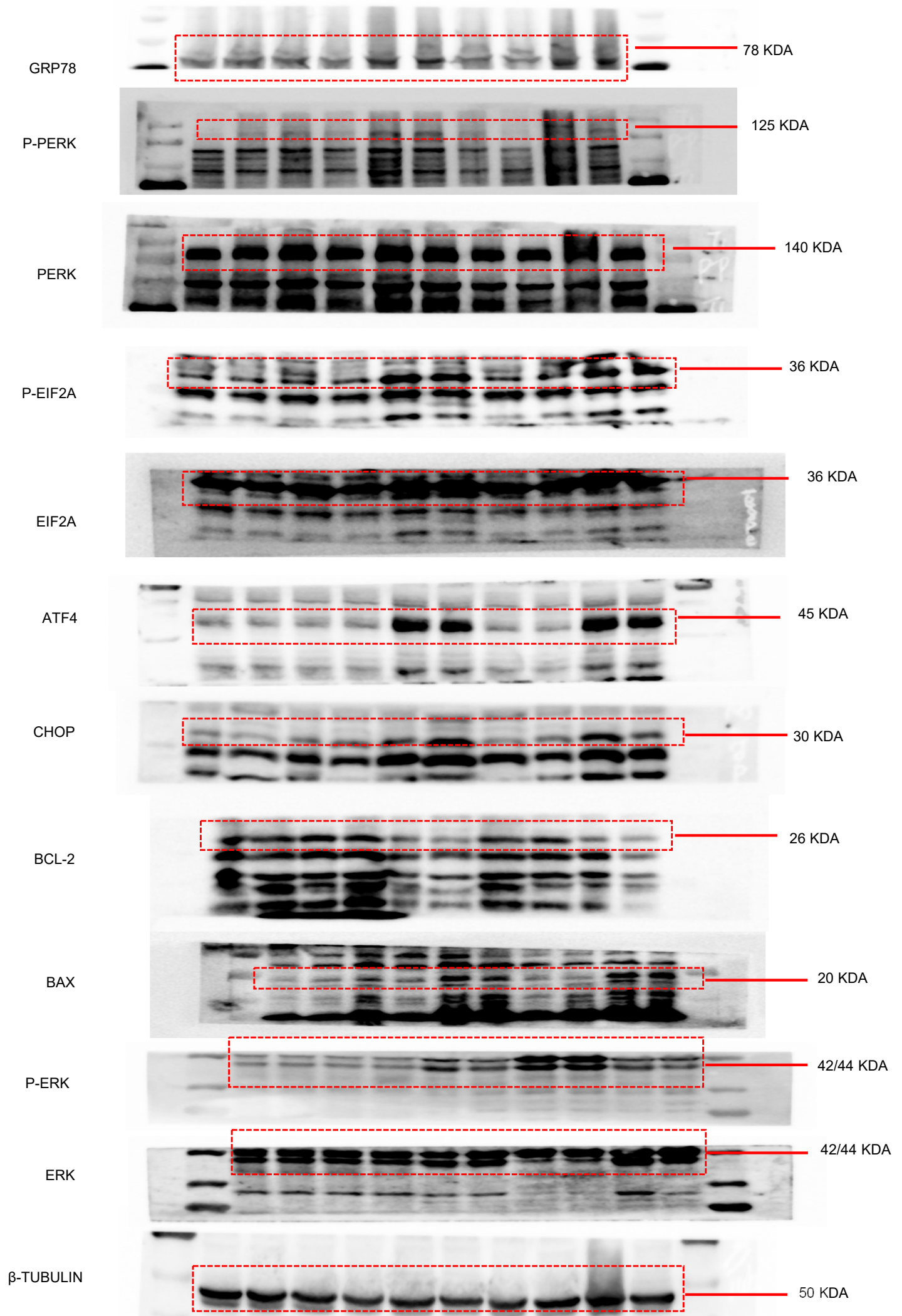


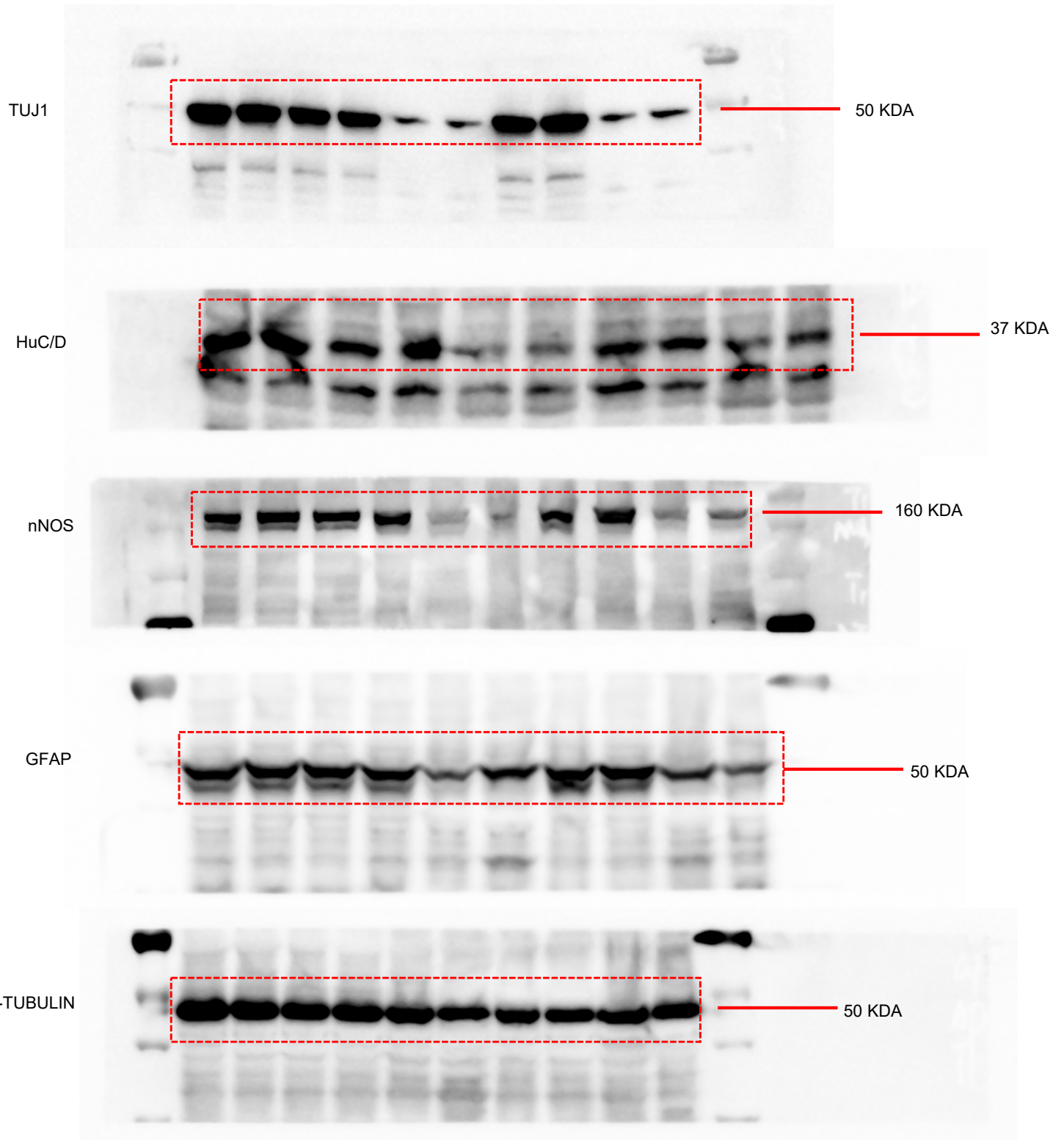


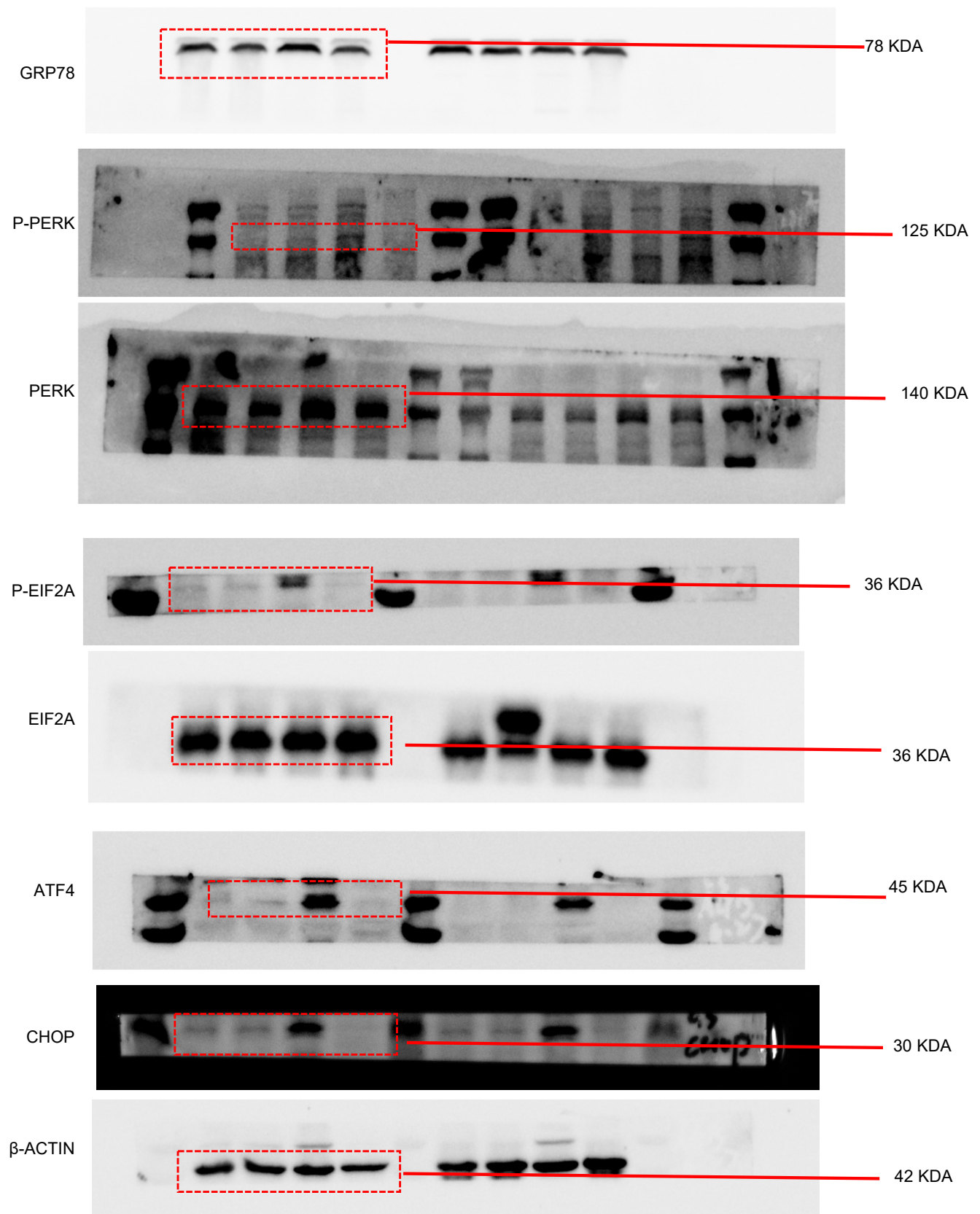
In Figure 12F, four cell samples (Glu, Glu+PD98059, Glu+MV, Glu+MV+PD98059) were run in parallel gel on the same day for the P-PERK, PERK and BAX detection, and the loading control for it is shown below the blot.

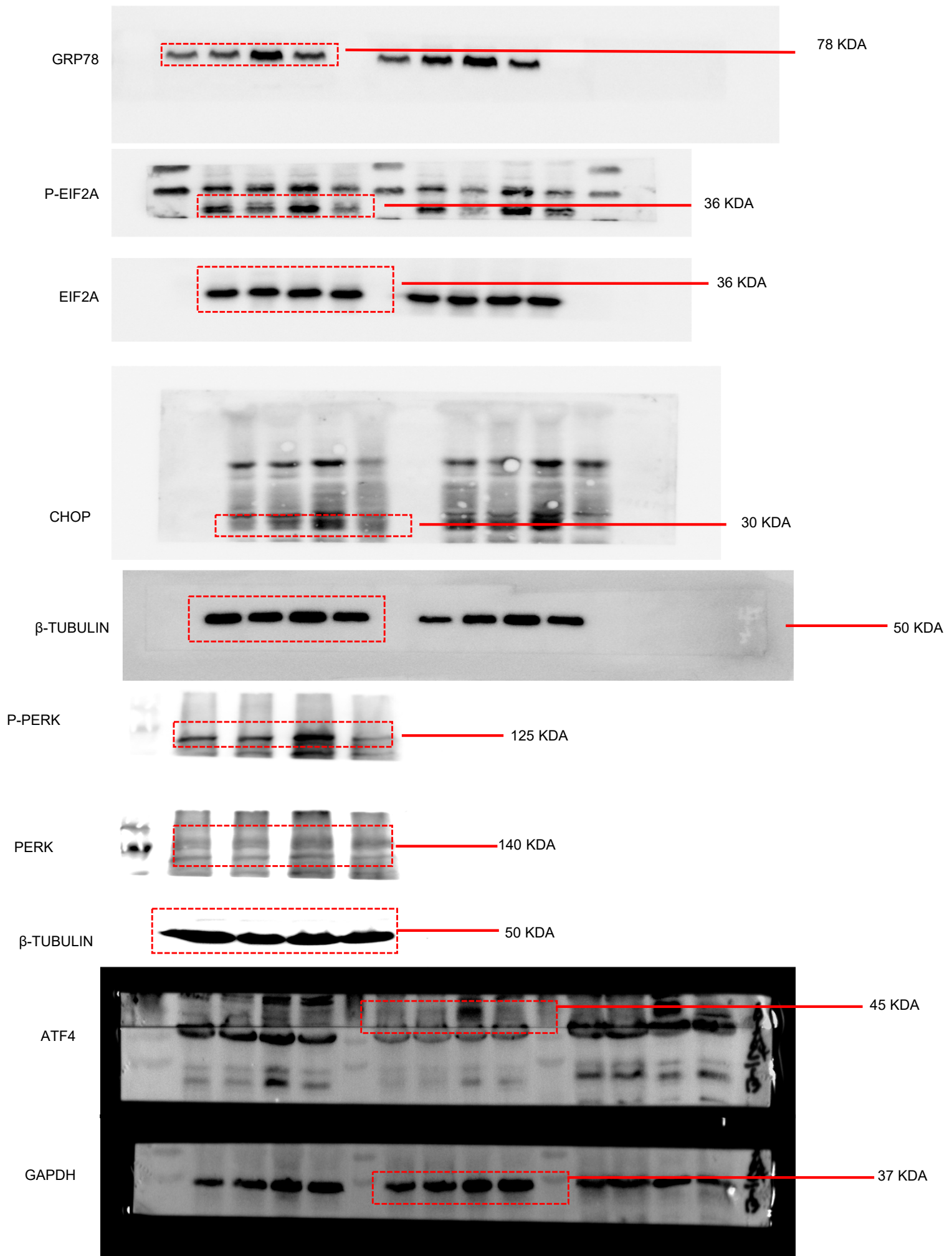
Full unedited blot for Figure 12G



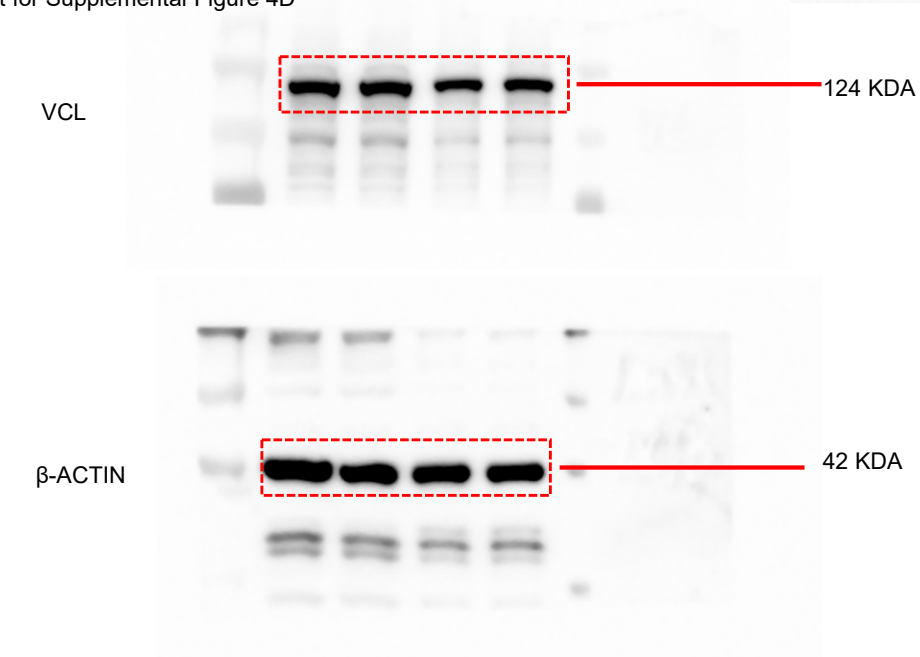
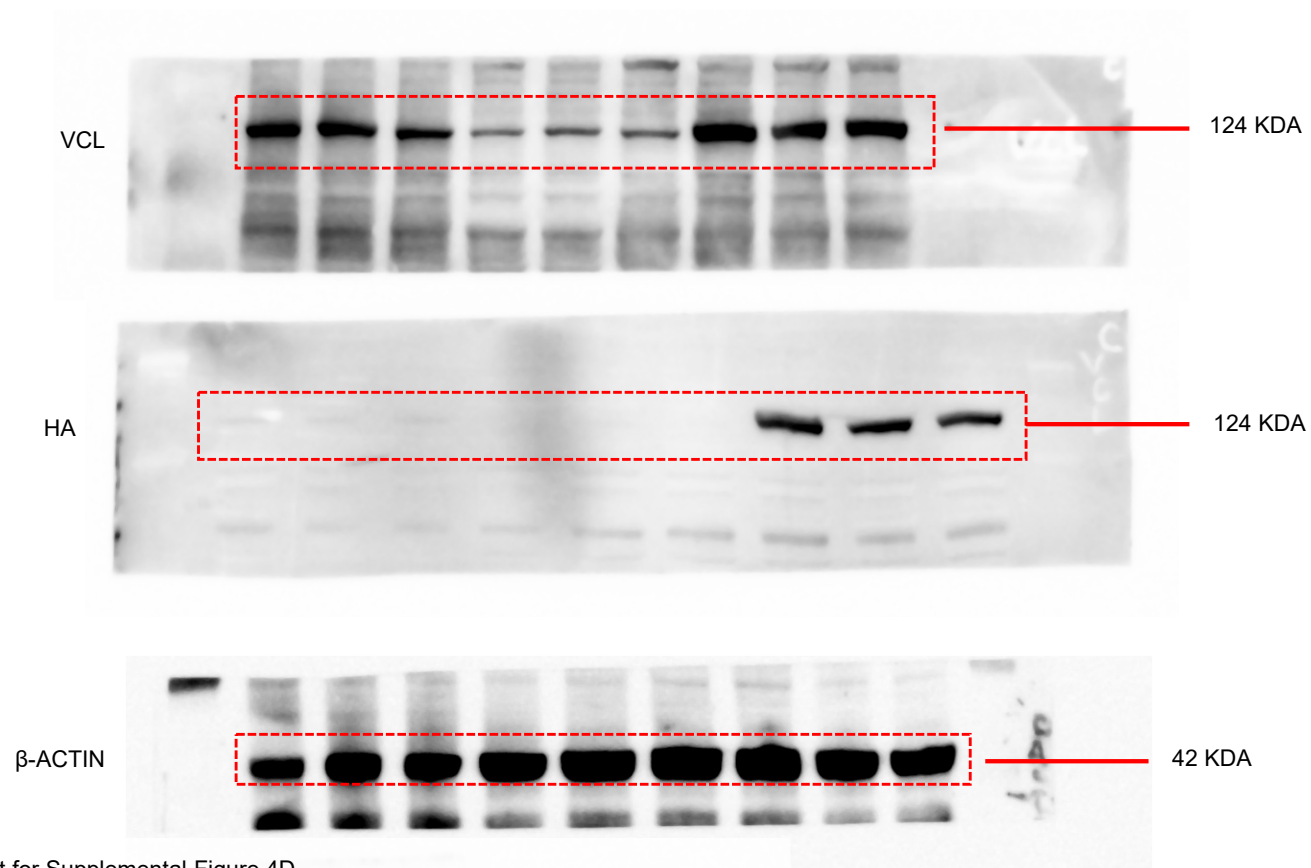




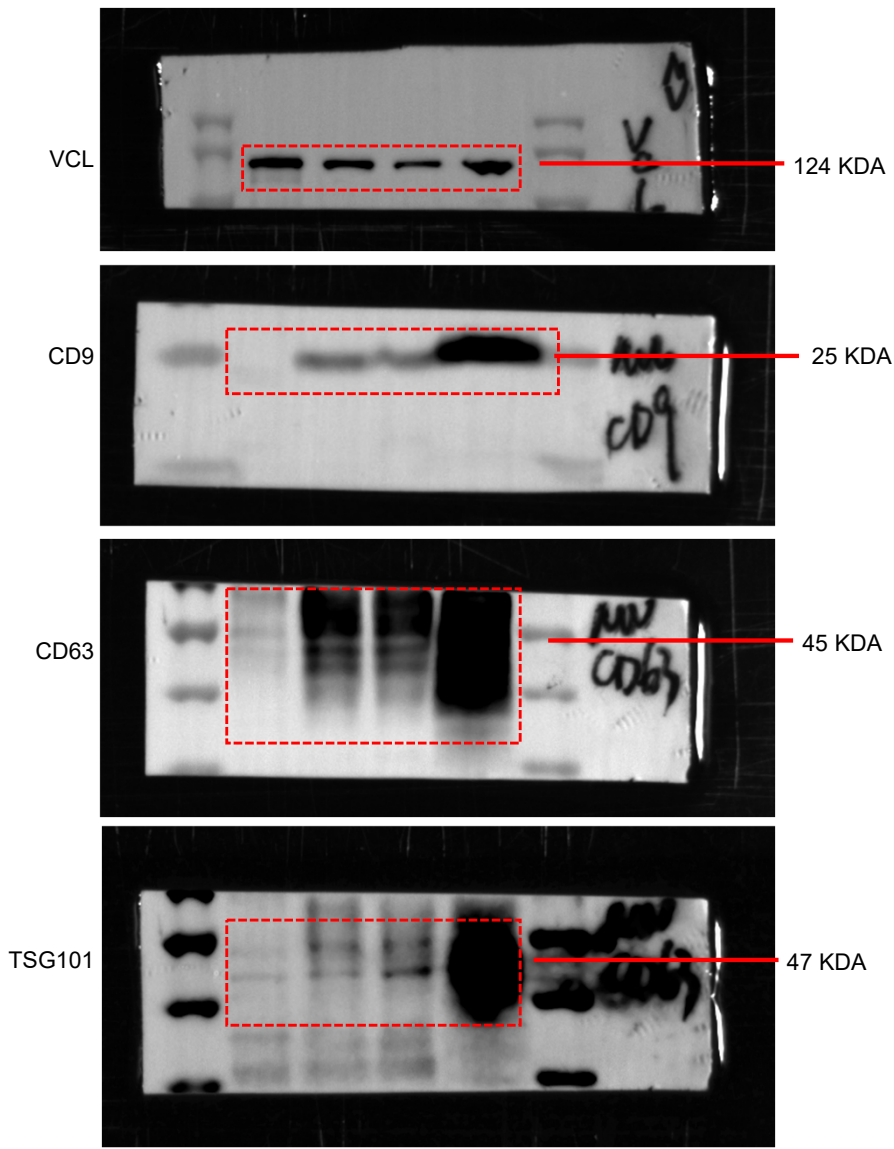




In Supplemental Figure 3C, four tissue samples (Con, Con+4-PBA, DM, DM+4-PBA) were run in parallel gel on the same day for the P-PERK, PERK and ATF4 detection, and the loading control for it is shown below the blot.



Full unedited blot for Supplemental Figure 4E



Full unedited blot for Supplemental Figure 6A

