

Figure S1. ATR senses ECM stiffness through USP21

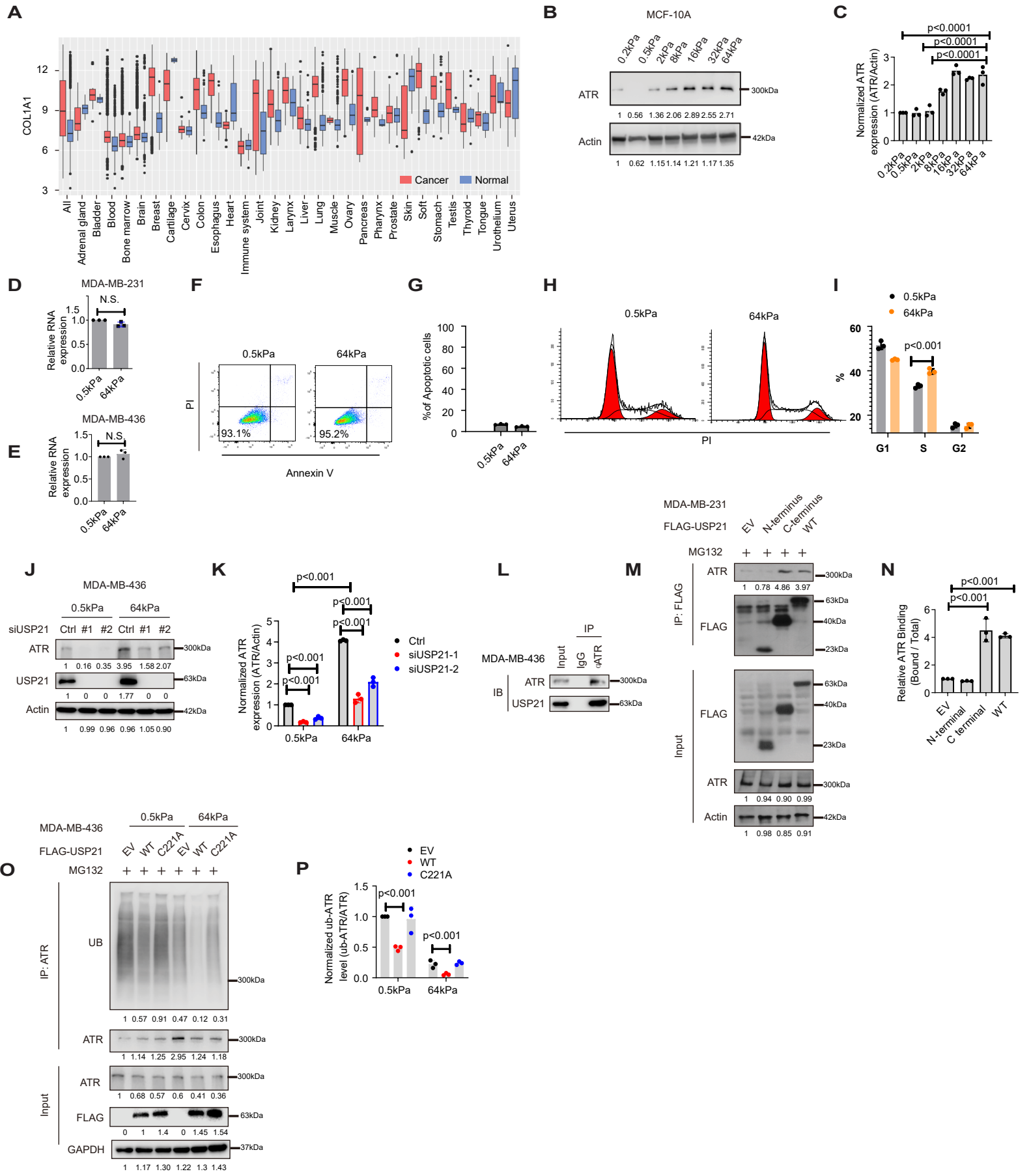


Figure S2. ATR promotes tumor invasion and metastasis

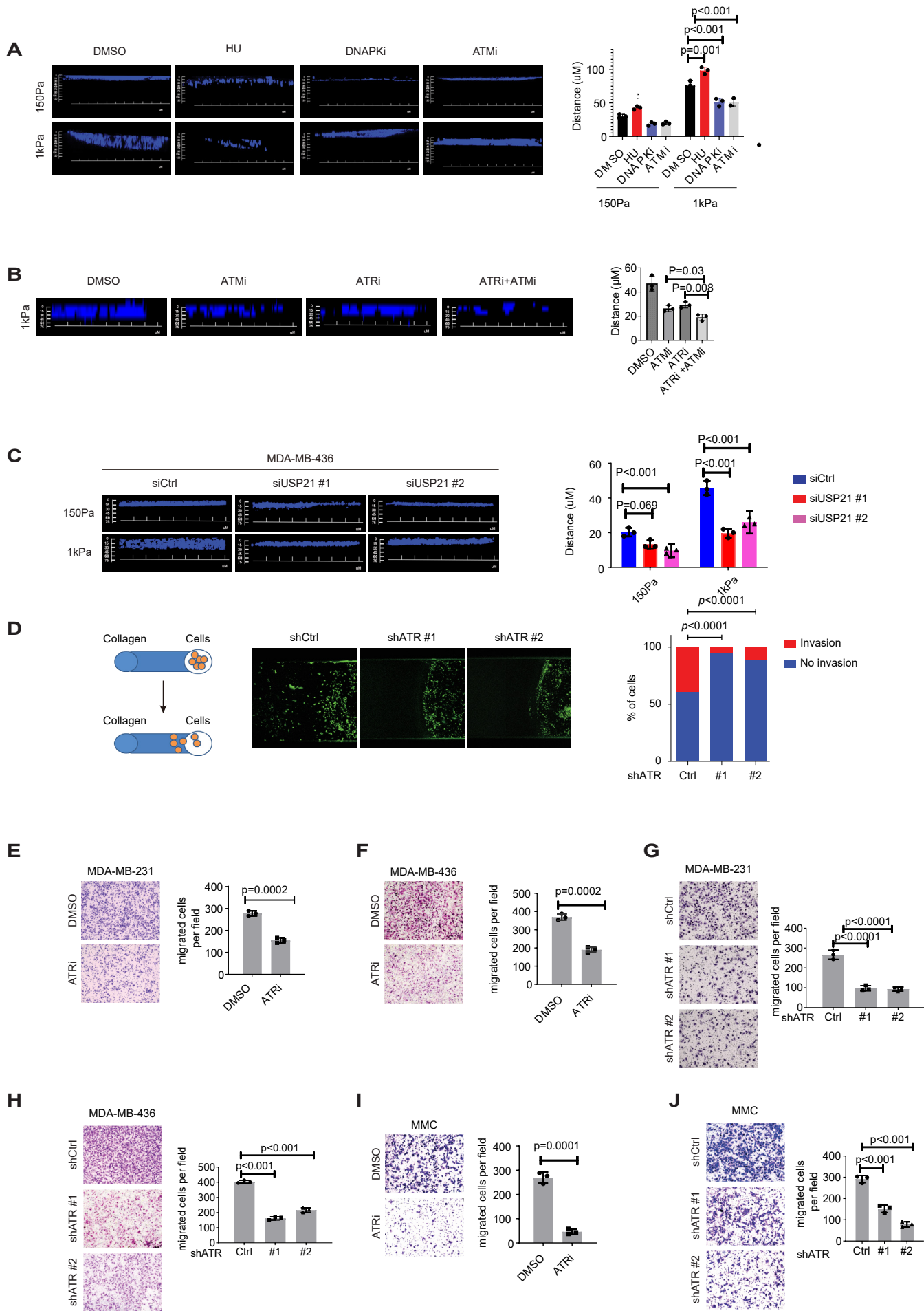
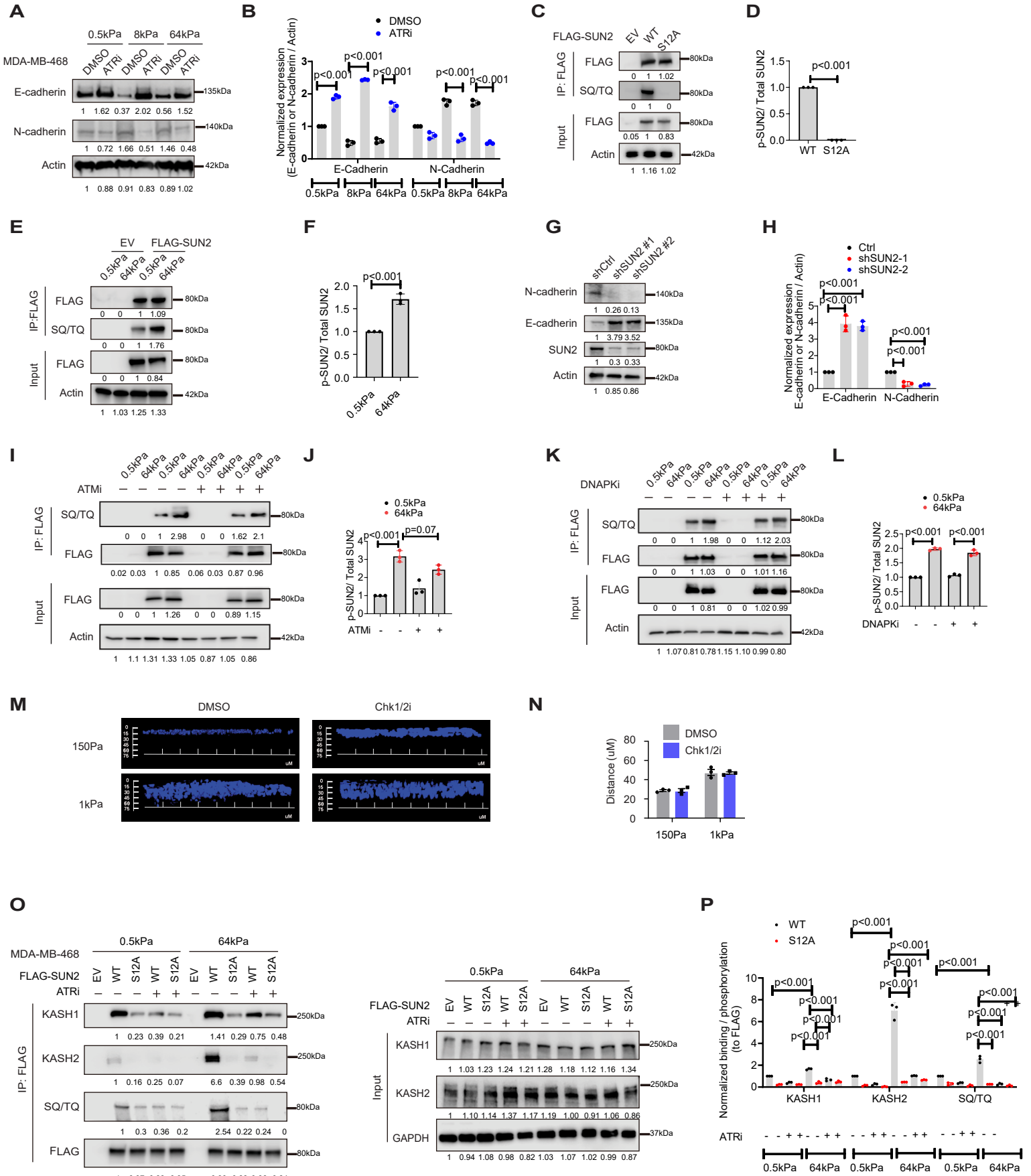


Figure S3. ATR Facilitates cytoskeleton remodeling induced EMT Process



FigureS4. ATR inhibition suppresses ECM stiffness induced EMT through SUN2

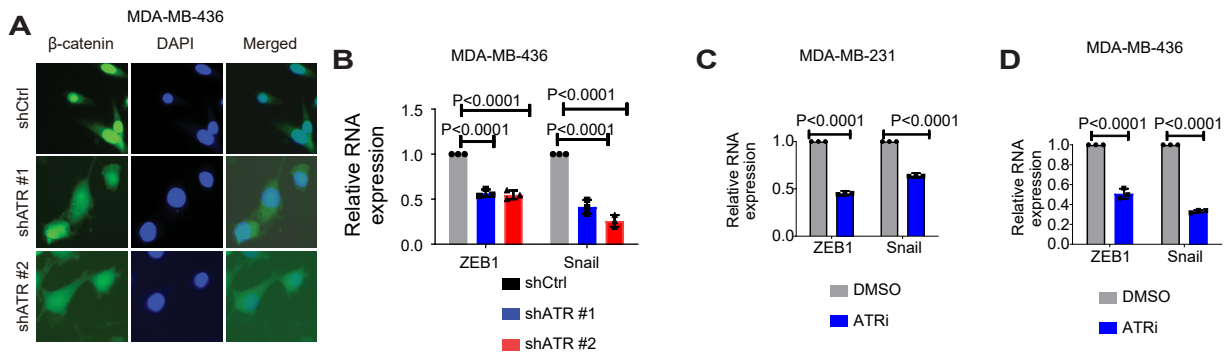


Figure S5. ATR inhibition activate anti-tumor immunity

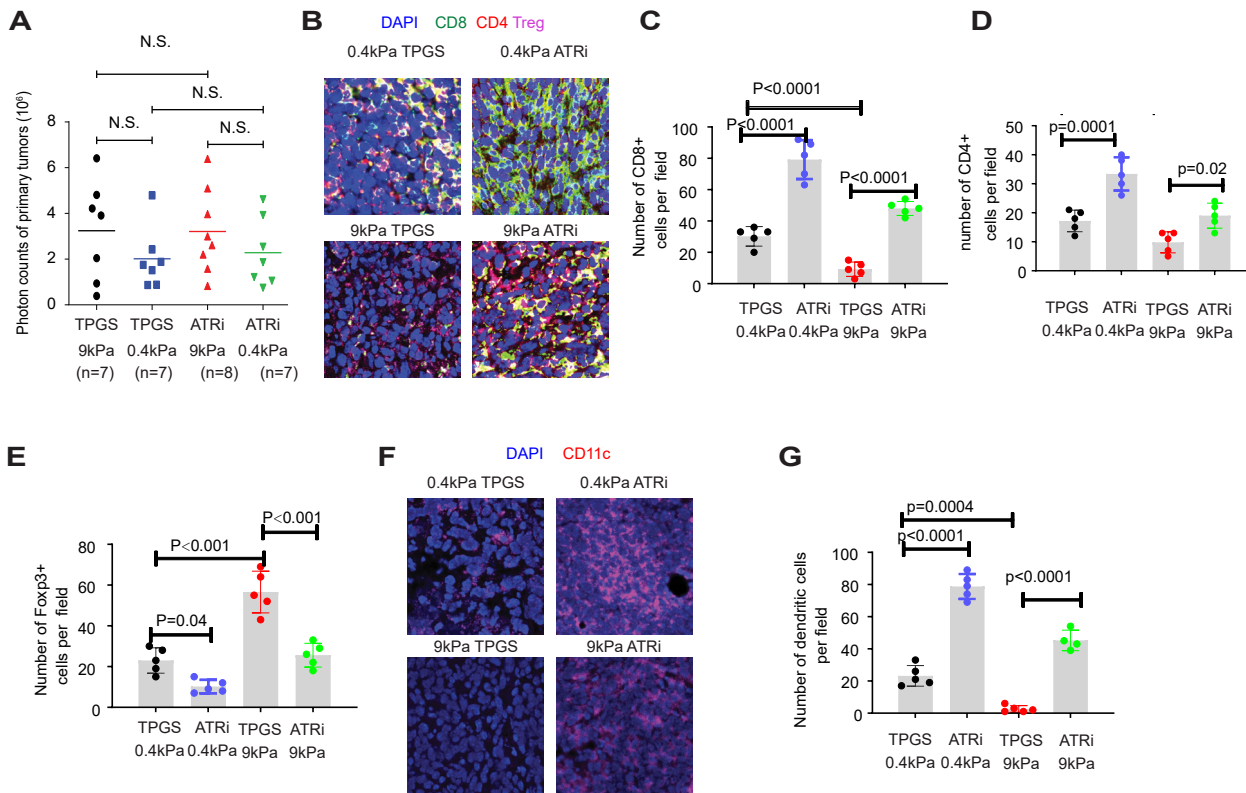


Figure S6. ATR inhibition sensitizes tumors to immunotherapy

