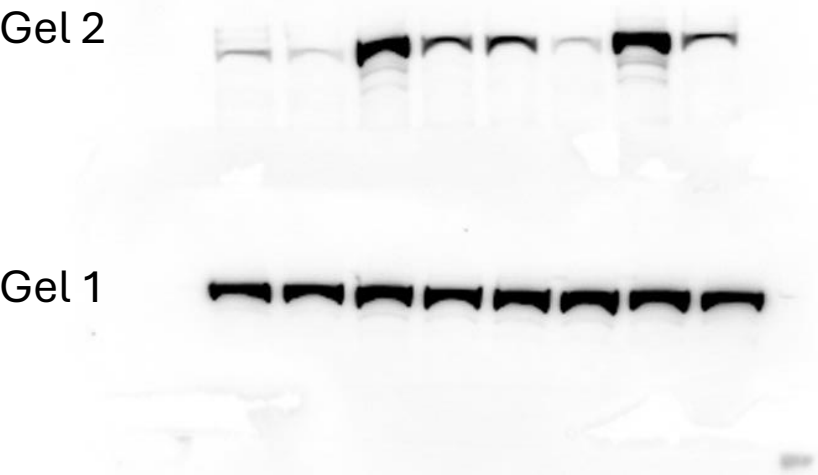


# Full unedited blots for Figure 8A, the top section (pATM, ATM, and vinculin blots)

## pATM, ATM blots



Rabbit anti-pATM, 1:500

Rabbit anti-total ATM, 1:500

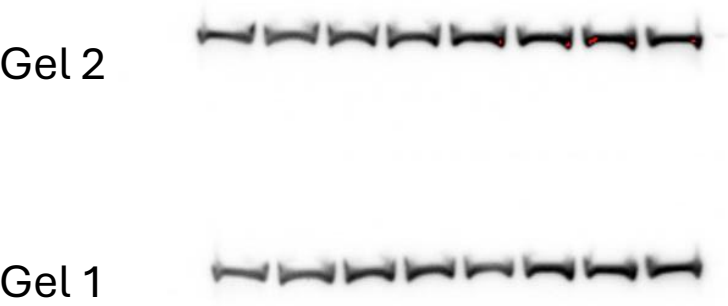
### Notes:

The same samples were run on 2 gels, one of which was used to probe pATM (gel 1), and the other—total ATM (gel 2).

Each gel was probed for its own loading control (vinculin), which was used for band intensity normalization for summary statistics.

Vinculin for gel1 was used in the figure.

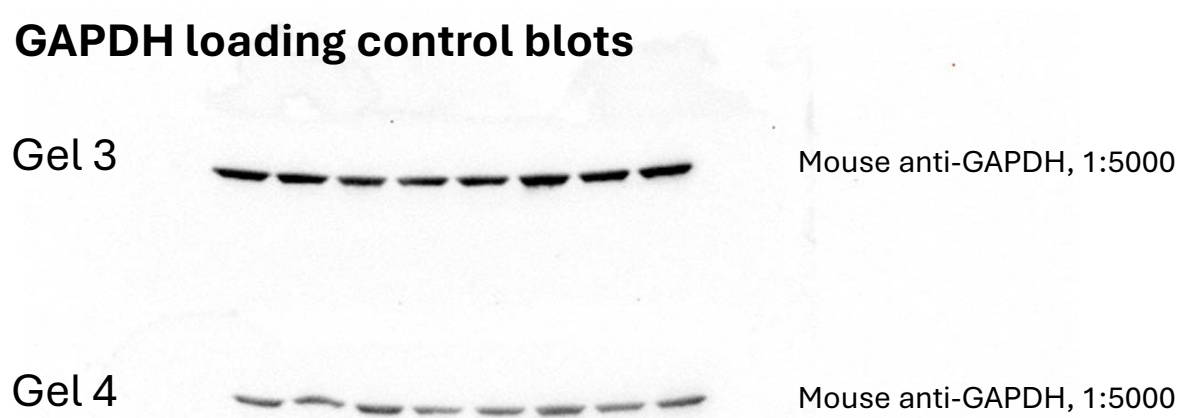
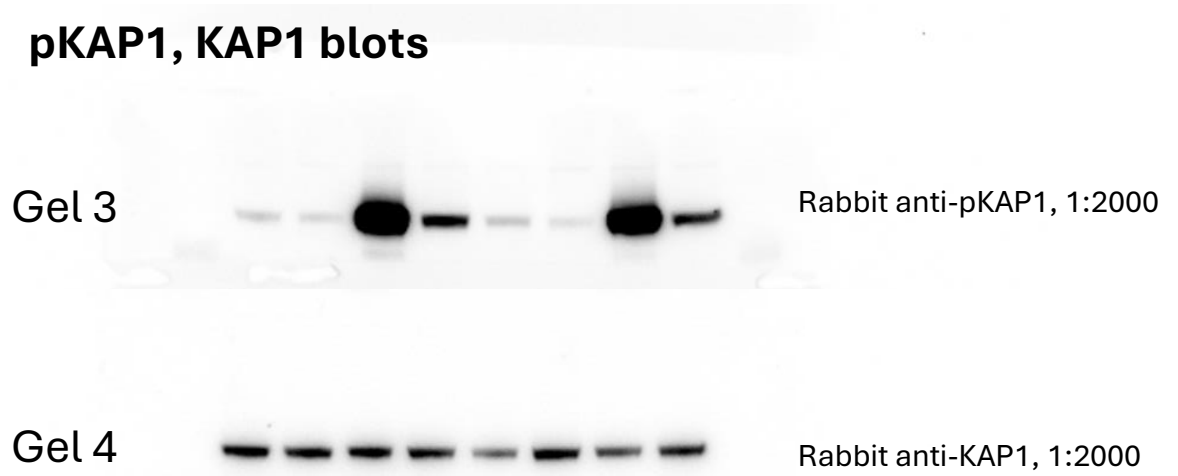
## Vinculin loading control blots



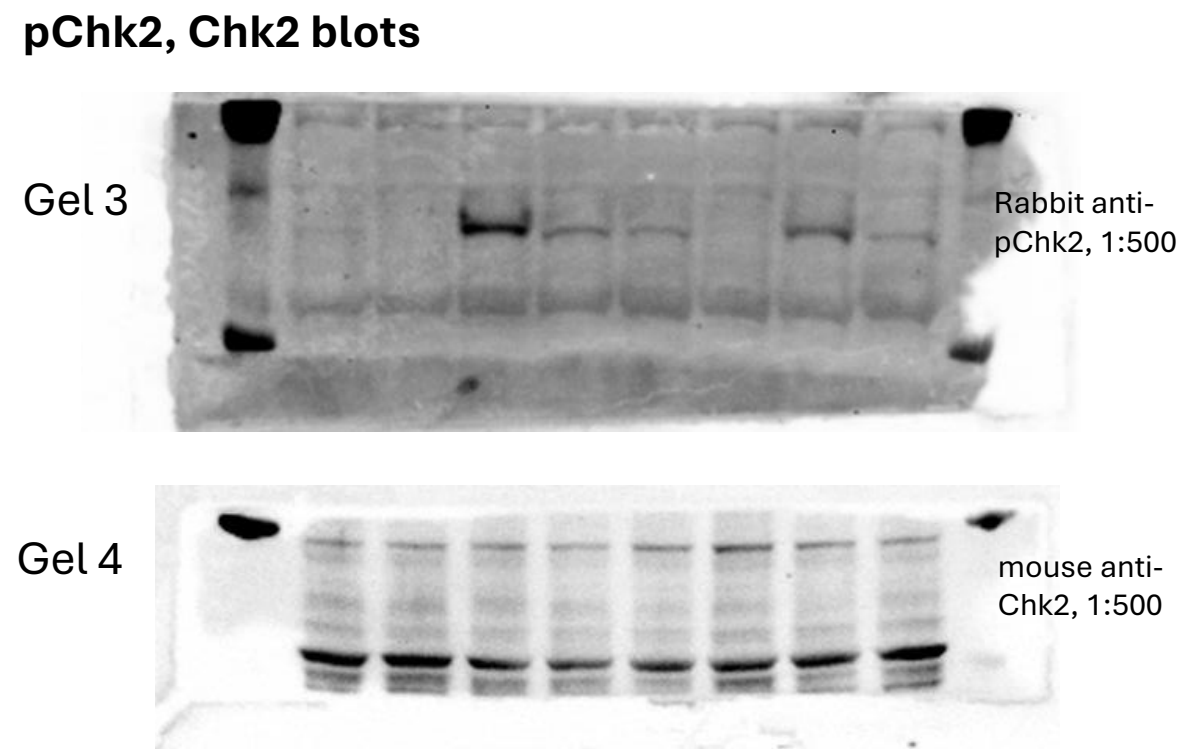
Rabbit anti-vinculin, 1:2000

Rabbit anti-vinculin, 1:2000

Full unedited blots for Figure 8A, the bottom section (pKAP1, KAP1, pChk2, Chk2, GAPDH blots)



4-12% Tris-Bis gels

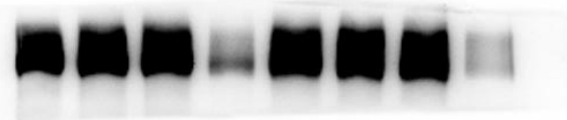


**Notes:**  
The same samples were run on 2 gels as indicated. Each gel was probed for its own loading control (GAPDH), which was used for band intensity normalization for summary statistics.

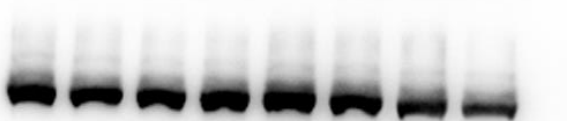
GAPDH from gel 3 was used for the figure.

# Full unedited blots for Figure 9 G

## Total ATM and vinculin (gel 1)



Rabbit anti-ATM, 1:700

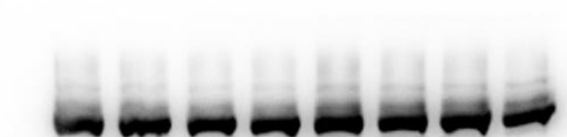


Rabbit anti-vinculin, 1:3000

## pATM and vinculin (gel 2)



Rabbit anti-pATM, 1:700



Rabbit anti-vinculin, 1:3000

Secondary antibody: goat anti-rabbit 1:5000  
7% SDS-PAGE gel

### Notes:

The same samples were run on 2 gels as indicated. Each gel had its own loading control immunoblot (vinculin). Vinculin blot from gel 2 was used for the figure.