

## Long noncoding RNA BLACAT2 promotes bladder cancer–associated lymphangiogenesis and lymphatic metastasis

Wang He, ... , Jian Huang, Tianxin Lin

*J Clin Invest.* 2022;132(16):e163716. <https://doi.org/10.1172/JCI163716>.

### Corrigendum

Original citation: *J Clin Invest.* 2018;128(2):861–875. <https://doi.org/10.1172/JCI96218> Citation for this corrigendum: *J Clin Invest.* 2022;132(16):e163716. <https://doi.org/10.1172/JCI163716> The authors recently became aware of errors in Figure 9, B and C. In Figure 9B, the area indicated as magnified in the inset box was incorrect for the Vector/shControl/Anti-luciferase IHC image. In addition, Figure 9C contained an incorrect image for the Vector/shControl/Intratatumoral sample. The corrected figure panels are shown below. The authors regret the errors.

Find the latest version:

<https://jci.me/163716/pdf>



# Corrigendum

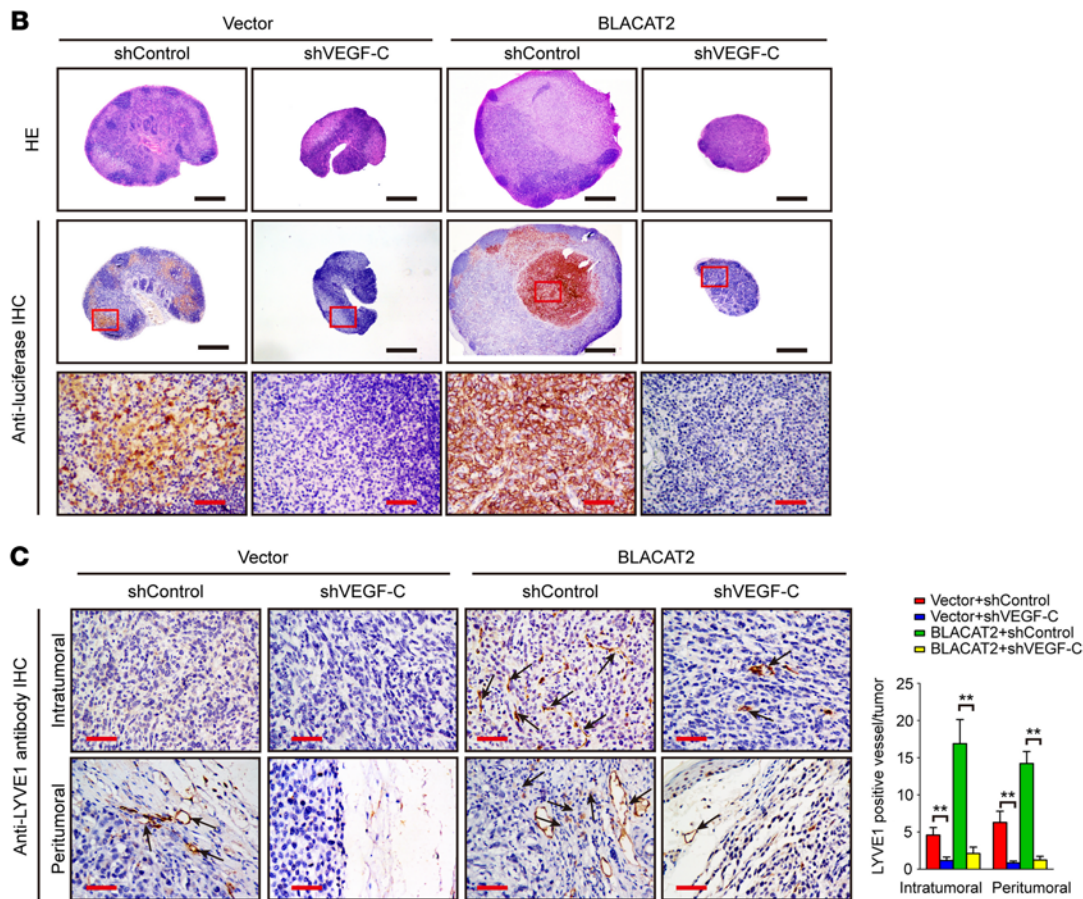
## Long noncoding RNA BLACAT2 promotes bladder cancer-associated lymphangiogenesis and lymphatic metastasis

Wang He, Guangzheng Zhong, Ning Jiang, Bo Wang, Xinxiang Fan, Changhao Chen, Xu Chen, Jian Huang, and Tianxin Lin

Original citation: *J Clin Invest.* 2018;128(2):861-875. <https://doi.org/10.1172/JCI96218>.

Citation for this corrigendum: *J Clin Invest.* 2022;132(16):e163716. <https://doi.org/10.1172/JCI163716>.

The authors recently became aware of errors in Figure 9, B and C. In Figure 9B, the area indicated as magnified in the inset box was incorrect for the Vector/shControl/Anti-luciferase IHC image. In addition, Figure 9C contained an incorrect image for the Vector/shControl/Intratumoral sample. The corrected figure panels are shown below.



The authors regret the errors.