

Functional redundancy of Rab27 proteins and the pathogenesis of Griscelli syndrome

Duarte C. Barral, ... , Kalwant S. Authi, Miguel C. Seabra

J Clin Invest. 2002;110(8):1213-1213. <https://doi.org/10.1172/JCI15058E1>.

Erratum

Original citation: *J. Clin. Invest.* 110:247-257 (2002). doi:10.1172/JCI15058 Citation for this Erratum: *J. Clin. Invest.* 110:1213 (2002). doi:10.1172/JCI15058E1. During the final stages of production, errors were introduced into Figures 2 and 7. The corrected figures and legends appear below. We regret the error, and have provided the author with corrected reprints. Figure 2 Expression of Rab27a and Rab27b in melanocytes and platelets. Platelets from wild-type (C3H/He+/+), homozygous (ash/ash), and heterozygous (+/ash) ashen mice and a melanocytic cell line (melan-a) were lysed, and identical amounts of protein (13 µg) from total lysates (for platelets) or postnuclear supernatants (for melan-a cells) were subjected to SDS-PAGE and immunoblotting as described in Methods. Monoclonal anti-Rab27a Ab, 4B12 was used to probe Rab27a (a) and affinity-purified polyclonal anti-Rab27b Ab S086 to probe Rab27b (b). Anti-calnexin Ab recognizing a ubiquitous ER-membrane protein was used as a loading control. Figure 7(a) Organization of the transgenic construct encoding Rab27b under the control of β-actin promoter. The PCAG/mycRab27/β-globin construct contains the CMV enhancer (dark green) and the chicken β-actin promoter sequence (light green) upstream of Rab27a or Rab27b cDNA (light blue), followed by the rabbit β-globin poly(A) sequence (red). (b) Strategy to detect ashen mutation (*). This is an A→T transversion (red) that is present on the third base of the splice donor site downstream of exon 4 (blue). Primers ASH2 (see [...])

Find the latest version:

<https://jci.me/15058E1/pdf>



Functional redundancy of Rab27 proteins and the pathogenesis of Griscelli syndrome

Duarte C. Barral, José S. Ramalho, Ross Anders, Alistair N. Hume, Holly J. Knapton, Tanya Tolmachova, Lucy M. Collinson, David Goulding, Kalwant S. Authi, and Miguel C. Seabra

Original citation: *J. Clin. Invest.* **110**:247–257 (2002). doi:10.1172/JCI200215058.

Citation for this Erratum: *J. Clin. Invest.* **110**:1213 (2002). doi:10.1172/JCI200215058E.

During the final stages of production, errors were introduced into Figures 2 and 7. The corrected figures and legends appear below. We regret the error, and have provided the author with corrected reprints.

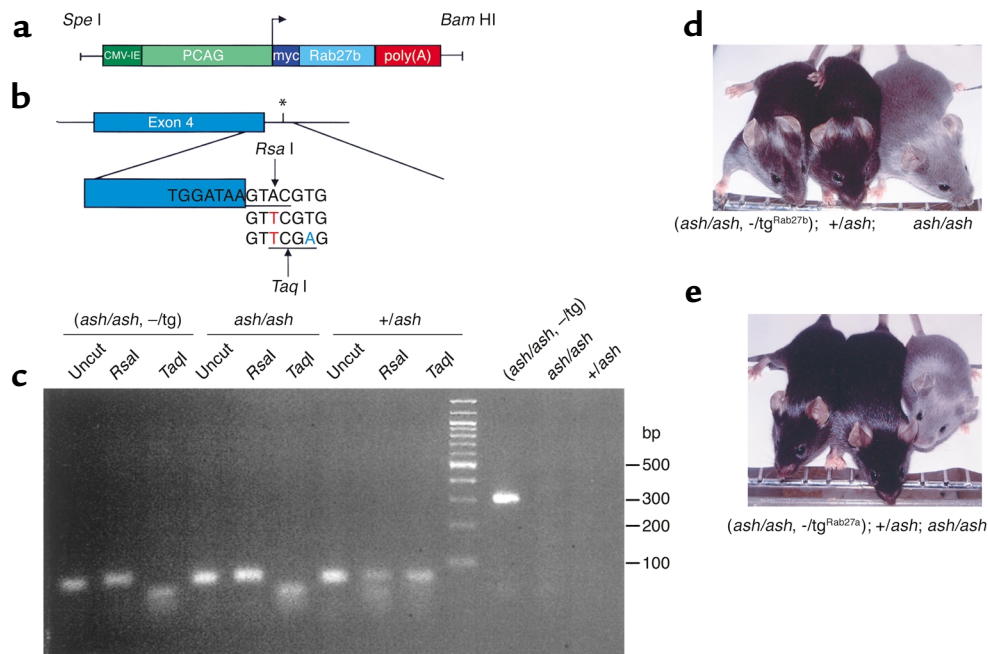


Figure 7

(a) Organization of the transgenic construct encoding Rab27b under the control of β -actin promoter. The P_{CAG}/mycRab27b/ β -globin construct contains the CMV enhancer (dark green) and the chicken β -actin promoter sequence (light green) upstream of Rab27a or Rab27b cDNA (light blue), followed by the rabbit β -globin poly(A) sequence (red). (b) Strategy to detect *ashen* mutation (*). This is an A→T transversion (red) that is present on the third base of the splice donor site downstream of exon 4 (blue). Primers ASH2 (see Methods), introduces a T→A transversion (green). *Rsa*I, which recognizes the sequence GTAC (underlined), cuts the DNA where indicated only in the absence of the *ashen* mutation. *Taq*I, which recognizes the sequence TCGA (underlined), cuts the DNA where indicated only if the *ashen* mutation is present. (c) Mouse genotyping. After PCR amplification the 80 bp product was digested with *Rsa*I and *Taq*I, which originates one fragment of 50 bp and one fragment of 30 bp. The uncut amplified product is shown as a control. The screening for the presence of the transgene was done as described in Methods, generating a product of 324 bp. The PCR and digestion products were resolved on a 3% agarose gel. The molecular weight of the standards is indicated on the right. (d and e) Photography of representative mice for Rab27b (d) or Rab27a (e) rescue experiment. Littermates resulting from crosses between a homozygous *ashen* mice with heterozygous transgenic mice were genotyped as above.

Figure 2

Expression of Rab27a and Rab27b in melanocytes and platelets. Platelets from wild-type (C3H/He^{+/+}), homozygous (*ash/ash*), and heterozygous (+/*ash*) *ashen* mice and a melanocytic cell line (melan-a) were lysed, and identical amounts of protein (13 μ g) from total lysates (for platelets) or postnuclear supernatants (for melan-a cells) were subjected to SDS-PAGE and immunoblotting as described in Methods. Monoclonal anti-Rab27a Ab, 4B12 was used to probe Rab27a (a) and affinity-purified polyclonal anti-Rab27b Ab S086 to probe Rab27b (b). Anti-calnexin Ab recognizing a ubiquitous ER-membrane protein was used as a loading control.

