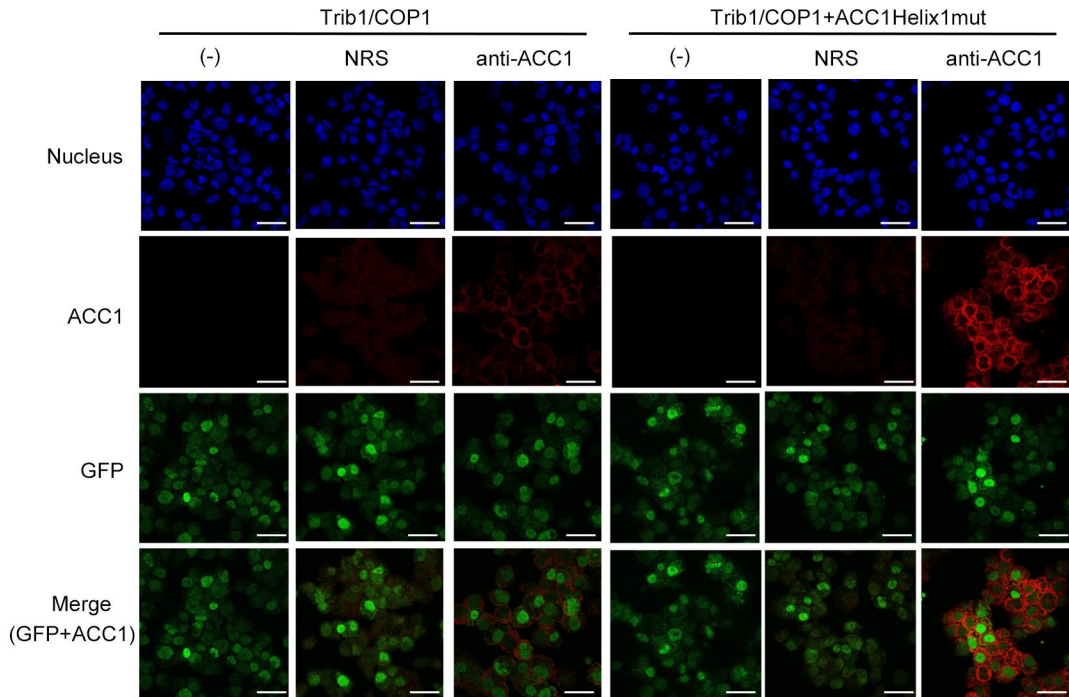


Supplemental Figure 1. Immunofluorescence staining of GFP-positive bone marrow (BM) cells infected with Trib1/COP1 or Trib1/COP1/ACC1 Helix1mut-retrovirus showing nucleus (blue), COP1 (red), and GFP (green). GFP-positive populations of BM cells were isolated by cell sorting and then analyzed for the experiment. Scale bars: 20 μ m. NRS, preimmune normal rabbit serum.



Supplemental Figure 2. Immunofluorescence staining of GFP-positive BM cells infected with Trib1/COP1 or Trib1/COP1/ACC1 Helix1mut-retrovirus showing nucleus (blue), ACC1 (red), and GFP (green). GFP-positive populations of BM cells were isolated by cell sorting and then analyzed for the experiment. Scale bars: 20 μ m. NRS, preimmune normal rabbit serum.