

Alterations in cardiac adrenergic signaling and calcium cycling differentially affect the progression of cardiomyopathy

Kalev Freeman, ... , Walter J. Koch, Leslie A. Leinwand

J Clin Invest. 2001;107(8):967-974. <https://doi.org/10.1172/JCI12083>.

Article

The medical treatment of chronic heart failure has undergone a dramatic transition in the past decade. Short-term approaches for altering hemodynamics have given way to long-term, reparative strategies, including β -adrenergic receptor (β AR) blockade. This was once viewed as counterintuitive, because acute administration causes myocardial depression. Cardiac myocytes from failing hearts show changes in β AR signaling and excitation-contraction coupling that can impair cardiac contractility, but the role of these abnormalities in the progression of heart failure is controversial. We therefore tested the impact of different manipulations that increase contractility on the progression of cardiac dysfunction in a mouse model of hypertrophic cardiomyopathy. High-level overexpression of the β_2 AR caused rapidly progressive cardiac failure in this model. In contrast, phospholamban ablation prevented systolic dysfunction and exercise intolerance, but not hypertrophy, in hypertrophic cardiomyopathy mice. Cardiac expression of a peptide inhibitor of the β AR kinase 1 not only prevented systolic dysfunction and exercise intolerance but also decreased cardiac remodeling and hypertrophic gene expression. These three manipulations of cardiac contractility had distinct effects on disease progression, suggesting that selective modulation of particular aspects of β AR signaling or excitation-contraction coupling can provide therapeutic benefit.

Find the latest version:

<https://jci.me/12083/pdf>



Alterations in cardiac adrenergic signaling and calcium cycling differentially affect the progression of cardiomyopathy

See related Commentary on pages 947–948.

Kalev Freeman,¹ Imanuel Lerman,¹ Evangelia G. Kranias,² Teresa Bohlmeier,³ Michael R. Bristow,³ Robert J. Lefkowitz,⁴ Guido Iaccarino,⁵ Walter J. Koch,⁵ and Leslie A. Leinwand¹

¹Department of Molecular, Cellular, and Developmental Biology, University of Colorado, Boulder, Colorado, USA

²Department of Pharmacology and Cell Biophysics, University of Cincinnati College of Medicine, Cincinnati, Ohio, USA

³Division of Cardiology, University of Colorado Health Sciences Center, Denver, Colorado, USA

⁴Department of Medicine, and

⁵Department of Surgery, Duke University Medical Center, Durham, North Carolina, USA

Address correspondence to: Leslie A. Leinwand, Department of Molecular, Cellular, and Developmental Biology, University of Colorado, Campus Box 347, Boulder, Colorado 80309-0347, USA.

Phone: (303) 492-7606; Fax: (303) 492-8907; E-mail: Leslie.Leinwand@Colorado.Edu.

Received for publication December 29, 2000, and accepted in revised form February 26, 2001.

The medical treatment of chronic heart failure has undergone a dramatic transition in the past decade. Short-term approaches for altering hemodynamics have given way to long-term, reparative strategies, including β -adrenergic receptor (β AR) blockade. This was once viewed as counterintuitive, because acute administration causes myocardial depression. Cardiac myocytes from failing hearts show changes in β AR signaling and excitation-contraction coupling that can impair cardiac contractility, but the role of these abnormalities in the progression of heart failure is controversial. We therefore tested the impact of different manipulations that increase contractility on the progression of cardiac dysfunction in a mouse model of hypertrophic cardiomyopathy. High-level overexpression of the β_2 AR caused rapidly progressive cardiac failure in this model. In contrast, phospholamban ablation prevented systolic dysfunction and exercise intolerance, but not hypertrophy, in hypertrophic cardiomyopathy mice. Cardiac expression of a peptide inhibitor of the β AR kinase 1 not only prevented systolic dysfunction and exercise intolerance but also decreased cardiac remodeling and hypertrophic gene expression. These three manipulations of cardiac contractility had distinct effects on disease progression, suggesting that selective modulation of particular aspects of β AR signaling or excitation-contraction coupling can provide therapeutic benefit.

J. Clin. Invest. 107:967–974 (2001).

Introduction

Chronic heart failure, a leading cause of morbidity and mortality, can result from a variety of primary insults to the heart, including genetic cardiomyopathies. Early in the course of myocardial failure, the heart compensates for inadequate function by adrenergic stimulation, activation of the renin-angiotensin-aldosterone system and other neurohumoral/cytokine systems, and myocardial hypertrophy. However, over time these compensatory mechanisms cease to provide benefit, and a pathological decompensation often ensues in which cardiac function deteriorates, the ventricles become dilated and fibrotic, and ultimately the heart fails. The molecular bases of the deterioration in the heart's pumping capacity and the associated pathological remodeling process are topics of intense investigation.

β -adrenergic receptor (β AR) blockade has been shown to provide therapeutic benefit in chronic heart failure (1–3). It has been hypothesized that inhibiting β AR signal transduction adds to the failing heart's

endogenous antiadrenergic strategy, which includes receptor downregulation and uncoupling, thereby minimizing adrenergic toxicity (4). Nonetheless, the viewpoint that β AR signaling is toxic to the failing heart may be an overly broad generalization. The toxic effects of elevated adrenergic drive are mediated primarily by β_1 ARs, in contrast to β_2 AR stimulation, which may be protective in some settings (5). Furthermore, manipulations that increase cardiac contractility, either via enhanced β AR signaling or alteration of the phospholamban-SR Ca^{2+} ATPase interaction, have recently been shown to prevent heart failure in several cardiomyopathic mouse models (6–9). Determining whether manipulation of regulatory proteins involved in Ca^{2+} handling or cellular signaling is helpful or harmful in heart disease requires further investigation (10).

We therefore tested the therapeutic impact of three different genetic manipulations that increase contractility on the progression of cardiac dysfunction in a mouse model of hypertrophic cardiomyopathy (HCM).

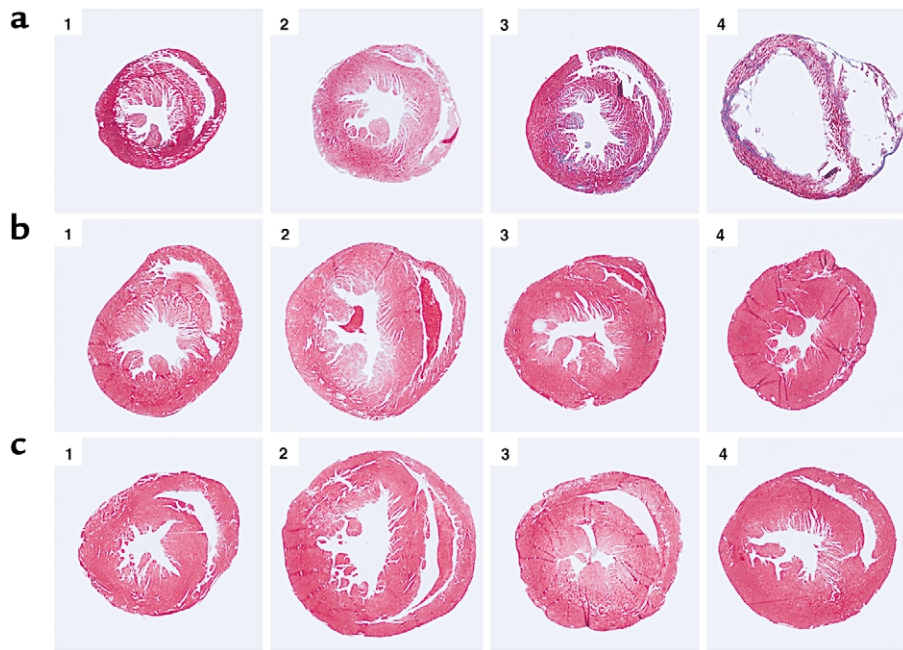


Figure 1

Histology of cross-bred mouse hearts. (a) Representative cross-sections of the hearts from HCM \times β_2 AR offspring: panel 1, NTG; panel 2, HCM; panel 3, β_2 AR; panel 4, HCM/ β_2 AR. (b) HCM \times β ARKct offspring: panel 1, NTG; panel 2, HCM; panel 3, β ARKct; panel 4, HCM/ β ARKct. (c) HCM \times PLB-null offspring: panel 1, NTG; panel 2, HCM; panel 3, PLB-null; panel 4, HCM/PLB-null. Magnification, $\times 5$.

In this model, male mice begin to show signs of heart failure by 8 months of age, with a transition from cardiac hypertrophy to ventricular dilation accompanied by exercise intolerance, cardiac dysfunction, and signs of adrenergic desensitization (11, 12). β_2 AR overexpression, β AR kinase inhibition, and phospholamban ablation each had distinct effects on disease progression, suggesting that selective modulation of particular aspects of β AR signaling or cardiac excitation-contraction coupling can provide therapeutic benefit.

Methods

Experimental animals. HCM mice heterozygous for a mutant myosin heavy chain transgene (R403Q missense mutation with an additional deletion of amino acids 468–527 bridged by nine nonmyosin amino acids) (11) were crossed with heterozygous animals from the TG4 line that overexpress the β_2 adrenergic receptor (β_2 AR mice) (13), to generate double-heterozygous HCM/ β_2 AR transgenic animals, along with HCM, β_2 AR, and nontransgenic (NTG) littermate controls. Similarly, HCM heterozygotes were crossbred with mice expressing the COOH-terminus of the β adrenergic receptor kinase 1 (β ARKct mice), which inhibits activation of endogenous β ARK1 (14), to yield HCM/ β ARKct double transgenic animals and appropriate littermate controls. HCM heterozygotes were also crossbred with phospholamban-null (PLB-null) animals (15). The resulting offspring possessed one PLB-null allele; animals from this group that were also heterozygous for the HCM transgene were crossed with offspring that

were negative for the HCM transgene to obtain animals heterozygous for the HCM transgene that were also PLB-null (HCM/PLB-null mice) and littermate controls. The background strain of all mice used was C57BL/6J, except PLB-null, which were in a FVB/CF1 mixed background, so age-matched littermate controls were used in all experiments to eliminate potential strain differences; furthermore, only male animals were used for these studies. The first study group from each cross underwent serial echocardiography at 4, 8, and 12 months. Separate groups of animals underwent exercise studies followed by sacrifice for histology at 8 months of age, or were sacrificed at 8 months of age for RNA analysis. Animals were handled according to approved protocols of the University of Colorado.

Echocardiography. Serial echocardiography was performed on animals at 4-, 8-, and 12-month time points at near-physiological heart rates (560 ± 15 beats per minute) as described previously (12). A Vingmed System Five echocardiography machine (GE Medical Systems, Milwaukee, Wisconsin, USA) with a 10-MHz-phased array transducer was used for image acquisition, and digital measurements of left-ventricular percent fractional shortening (%FS) were made from M-mode images that were regenerated from the original R0 sampling information.

Treadmill exercise tolerance. Mice were exercised on a custom-built eight-lane treadmill with an infrared detection system above the shock stimulus, as described previously (12). The animals were acclimated to the treadmill over a 1-week period, which consisted

of one 15-minute low-speed (5–7 m/min) session without the shock grid, and two 15-minute sessions with the shock-grid (5–7 and 20 m/min, respectively). After the acclimation period, the animals were exercised six times each at 20 m/min on a 7 degree incline. If an animal became exhausted during the experiment, the shock bars for that animal were turned off and the animal was removed from the apparatus. The performance for each mouse was assessed as the average number of beam-breaks per minute over all exercise sessions.

Histology. Hearts were rapidly excised following cervical dislocation and placed in PBS while still beating to allow blood to be pumped out of the cardiac chambers and coronary vessels. Hearts were then placed in a 10:1 volume of 10% neutral buffered formalin to tissue for fixation. The fixed hearts were processed, embedded in paraffin, sectioned, and stained with Masson's Trichrome according to standard protocols.

RNA analysis. Mice were sacrificed by cervical dislocation, and hearts were placed in PBS to allow the extrusion of blood as just described. Left ventricles were then dissected and frozen at -80°C within 10 minutes of sacrifice, and total RNA was extracted using TRIzol Reagent (Life Technologies Inc., Grand Island, New York, USA). mRNA levels of β myosin heavy chain (βMyHC), α skeletal actin (sACT), and atrial natriuretic factor (ANF) were assessed by slot-blot using

oligonucleotide probes described previously (16, 17). Blots were exposed on phosphor storage screens and scanned using a phosphoimager, and the signal intensities were digitally quantified. Small variations in loading were corrected by normalization to GAPDH mRNA levels, which were determined using duplicate blots as described previously (12).

Statistics. Data are presented as mean \pm SEM. The number of mice used in each experiment is indicated. Statistical analysis was performed by ANOVA for multiple group comparisons.

Results

To evaluate the impact of $\beta_2\text{AR}$ overexpression, expression of the βARKct peptide that can inhibit βARK1 , and ablation of phospholamban on the progression of cardiomyopathy, animals with these manipulations (13–15) were cross-bred into the HCM mouse line, and male offspring were studied through 1 year of age. In the offspring of the HCM \times $\beta_2\text{AR}$ cross, we first noted that the HCM/ $\beta_2\text{AR}$ double transgenic animals had significantly increased mortality, with only 50% survival at 8 months and less than 10% survival at 12 months. Some animals showed physical signs of congestive heart failure, including extensive intraperitoneal edema, pulmonary and hepatic enlargement, and massively enlarged hearts (as great as 430 mg in

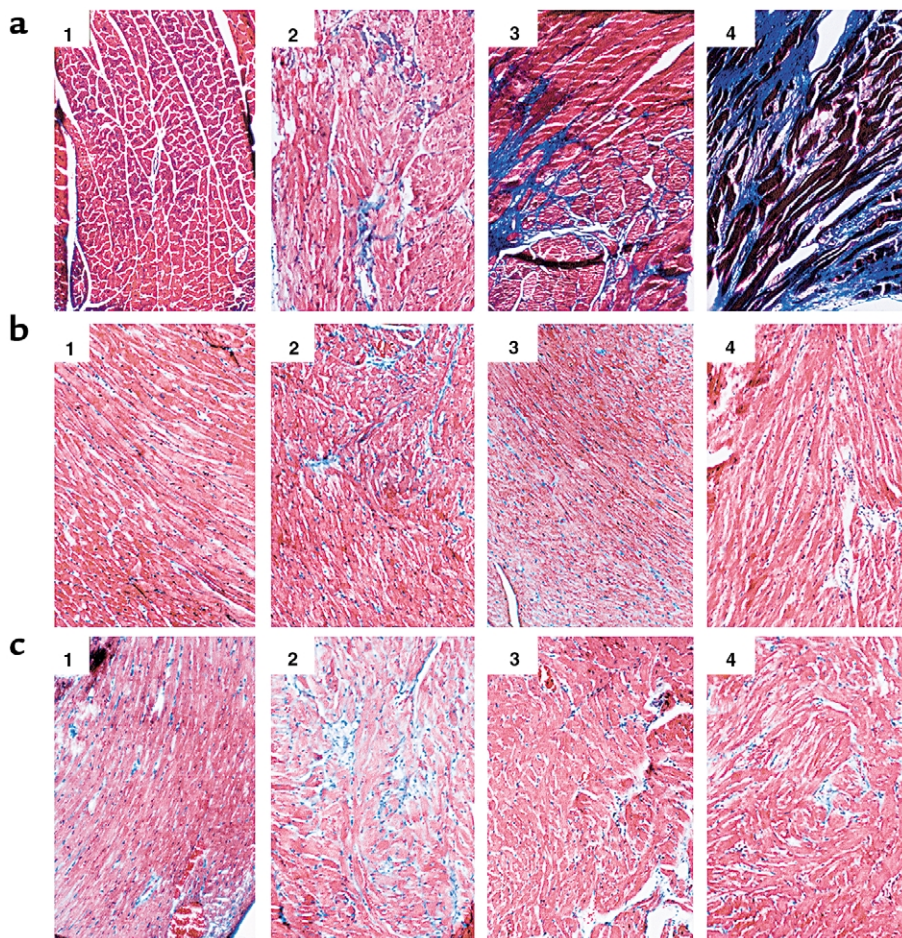


Figure 2

Histology of cross-bred mouse hearts. (a) HCM \times $\beta_2\text{AR}$ offspring: panel 1, NTG; panel 2, HCM; panel 3, $\beta_2\text{AR}$; panel 4, HCM/ $\beta_2\text{AR}$. (b) HCM \times βARKct offspring: panel 1, NTG; panel 2, HCM; panel 3, βARKct ; panel 4, HCM/ βARKct . (c) HCM \times PLB-null offspring: panel 1, NTG; panel 2, HCM; panel 3, PLB-null; panel 4, HCM/PLB-null. Magnification $\times 250$.

one 13-week-old mouse) with atrial and ventricular dilation. Both the HCM and β_2AR littermates also showed increased mortality compared with NTG controls at one year of age. No differences in survival were noted in any of the offspring from HCM \times β_2ARKct or HCM \times PLB-null crosses.

Compared with NTG controls, HCM mice showed modest cardiac hypertrophy with an increased left ventricular internal area, as described previously (Figure 1, first two columns) (11, 12). The gross morphology of hearts from the β_2AR , β_2ARKct , and PLB-null animals was not different from that of NTG control hearts (Figure 1, third column). The morphology of HCM/ β_2ARKct and HCM/PLB-null hearts was also normal, but the HCM/ β_2AR hearts showed dilated ventricular and atrial chambers with thin, fibrotic ventricular walls (Figure 1, fourth column).

The hearts of HCM mice from the HCM \times β_2ARKct and HCM \times PLB-null crosses were significantly hypertrophic (respectively, 17% and 10% greater than those of NTG controls); the HCM mice from the HCM \times β_2AR cross also showed a trend to cardiac hypertrophy that was not statistically significant in multigroup

comparisons that included the more extreme hypertrophy of HCM/ β_2AR littermates (Table 1). β_2AR hearts were not hypertrophied, but the heart/body weight ratios of HCM/ β_2AR littermates were approximately 67% greater than those of NTG controls. Cardiac hypertrophy was not apparent in β_2ARKct or HCM/ β_2ARKct animals. In contrast, PLB-null mice showed a modest but significant increase in heart/body weight (10% greater than that of NTG controls). The heart/body weights of HCM/PLB-null mice were nearly 30% greater than those of NTG controls and were also significantly greater than those of either HCM or PLB-null littermates.

The characteristic histopathology of hypertrophic cardiomyopathy, including fibrosis and myocellular disarray, was apparent to a variable extent in all mice that carried the mutant myosin transgene, including the HCM/ β_2AR , HCM/ β_2ARKct , and HCM/PLB-null mice, compared with NTG controls (Figure 2). The hearts of 8-month-old β_2AR mice showed areas of significant fibrosis, but without myocellular disarray (Figure 2a, third column). HCM/ β_2AR hearts showed severe histopathology, with extensive fibrosis and disarray (Figure 2a, fourth column). The β_2ARKct and PLB-null mice showed normal myocardial histology (Figure 2, b and c, third column).

We performed transthoracic echocardiography on age-matched male littermates at 4, 8, and 12 months of age and measured %FS of the left ventricle for each mouse. The HCM mice had normal %FS at 4 months of age, with decreased %FS at both 8 and 12 months of age (Figure 3a). We noted a significant increase in systolic function in both the β_2AR littermates and the HCM/ β_2AR double transgenics at 4 months of age. In the β_2AR animals, the increased %FS was no longer observed at 8 months of age, and by 12 months, systolic function was significantly impaired. The HCM/ β_2AR double transgenics showed an even more dramatic loss of cardiac function, with a %FS of only two-thirds that of littermate controls at 8 months of age. Only one HCM/ β_2AR animal from this study group survived to 12 months of age, and he died during preparation for echocardiography.

The β_2ARKct mice displayed a marked increase in cardiac function at 4 months of age that persisted through one year (Figure 3b). Unlike the HCM/ β_2AR mice, which were hypercontractile at 4 months of age, the HCM/ β_2ARKct did not have higher contractility than NTG controls did at any time point. However, expression of the β_2ARKct transgene prevented the depression in cardiac dysfunction that occurred in HCM littermates, and at 1 year of age, %FS was significantly higher in the HCM/ β_2ARKct mice than in their HCM littermates. HCM \times PLB-null offspring showed a pattern of systolic function similar to that of HCM \times β_2ARKct offspring (Figure 3c). Systolic function was greatly enhanced in PLB-null mice at 4, 8, and 12 months of age. The %FS of HCM/PLB-null mice was neither increased nor decreased relative to controls through 1 year, and %FS was significantly increased compared

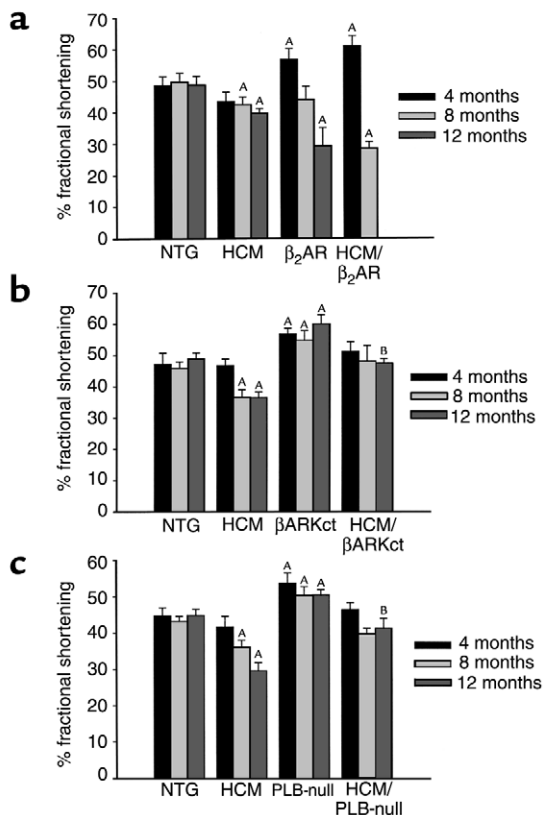


Figure 3 Systolic function of cross-bred mouse hearts as determined by serial echocardiography. (a) HCM \times β_2AR mice (NTG, $n = 8$; HCM, $n = 12$; β_2AR , $n = 7$; HCM/ β_2AR , $n = 4$). (b) HCM \times β_2ARKct mice (NTG, $n = 5$; HCM, $n = 6$; β_2ARKct , $n = 8$; HCM/ β_2ARKct , $n = 5$). (c) HCM \times PLB-null mice (NTG, $n = 6$; HCM, $n = 8$; PLB-null, $n = 7$; HCM/PLB-null, $n = 9$). ^A $P < 0.05$ vs. NTG; ANOVA. ^B $P < 0.05$ vs. HCM; ANOVA.

Table 1
Heart and body weights of cross-bred mice

| Cross | Genotype (n) | Age (mo) | Body weight (g) | Heart weight (mg) | Heart wt/Body wt |
|---------------------|-------------------------|--------------|-----------------|----------------------------|----------------------------|
| HCM × β_2 AR | NTG (9) | 9.71 ± 0.09 | 30.26 ± 0.80 | 146.2 ± 3.2 | 4.87 ± 0.21 |
| | HCM (8) | 9.65 ± 0.19 | 30.23 ± 1.50 | 165.3 ± 7.7 | 5.49 ± 0.18 |
| | β_2 AR (8) | 9.43 ± 0.21 | 30.25 ± 0.53 | 141.1 ± 4.3 | 4.99 ± 0.10 |
| | HCM/ β_2 AR (7) | 9.90 ± 0.11 | 32.11 ± 0.76 | 265.3 ± 39.8 ^B | 8.18 ± 1.06 ^B |
| HCM × β ARKct | NTG (13) | 10.93 ± 0.36 | 32.46 ± 0.59 | 150.3 ± 3.6 | 4.63 ± 0.08 |
| | HCM (12) | 10.55 ± 0.25 | 31.20 ± 0.66 | 169.5 ± 14.2 ^A | 5.45 ± 0.45 ^A |
| | β ARKct (15) | 10.50 ± 0.25 | 32.70 ± 0.57 | 145.0 ± 3.5 | 4.45 ± 0.12 |
| | HCM/ β ARKct (13) | 10.02 ± 0.48 | 31.46 ± 0.89 | 150.5 ± 3.9 | 4.80 ± 0.10 |
| HCM × PLB-null | NTG (15) | 10.51 ± 0.05 | 34.03 ± 1.15 | 167.2 ± 7.1 | 4.91 ± 0.12 |
| | HCM (12) | 10.65 ± 0.11 | 35.43 ± 2.04 | 188.9 ± 10.4 ^A | 5.40 ± 0.23 ^A |
| | PLB-null (15) | 10.52 ± 0.07 | 33.86 ± 0.92 | 183.5 ± 8.0 ^A | 5.41 ± 0.16 ^A |
| | HCM/PLB-null (15) | 10.46 ± 0.03 | 32.93 ± 0.96 | 206.7 ± 5.1 ^{B,C} | 6.33 ± 0.19 ^{B,C} |

^A*P* < 0.05 vs. NTG; ANOVA. ^B*P* < 0.001 vs. NTG; ANOVA. ^C*P* < 0.001 vs. HCM and PLB-null; ANOVA.

with HCM littermates at 1 year of age. Like β ARK inhibition, ablation of PLB appeared to prevent cardiac dysfunction in the older male HCM animals without causing a significant increase in inotropy over NTG controls at any time point.

We previously observed impaired exercise tolerance in HCM mice at 8 months of age (12), and we used a similar treadmill exercise test to evaluate HCM × β_2 AR, HCM × β ARKct, and HCM × PLB-null offspring. The HCM × β ARKct and HCM × PLB-null mice were studied at 8 months of age; owing to the higher mortality of HCM/ β_2 AR mice, the HCM × β_2 AR offspring were studied at 6 months of age. In the HCM × β_2 AR experiment, we noted significantly decreased exercise tolerance in the HCM mice, seen as an increased number of beam breaks per minute (Figure 4a). The 6-month-old β_2 AR mice showed significantly increased exercise tolerance, with a decreased number of beam breaks per minute. Two of the 8 HCM/ β_2 AR animals in this group died before beginning exercise testing, and a third mouse died during the first exercise session. Exercise tolerance in the five surviving HCM/ β_2 AR mice was slightly but not significantly impaired. In studies of HCM × β ARKct and HCM × PLB-null animals, HCM mice showed impaired exercise tolerance (Figure 4, b and c). Exercise tolerance of the PLB-null animals was not different from that of NTG, as reported previously (18); β ARKct mice also exhibited normal exercise tolerance. Both the HCM/ β ARKct double transgenic mice and HCM/PLB-null mice showed significantly improved exercise tolerance compared with HCM littermates.

β MyHC, ANF, and sACT are normally expressed in the developing mouse heart, and induction of these genes has been well-established in cardiac hypertrophy (19, 20). We previously observed an upregulation of β MyHC, ANF, and sACT mRNA in hearts of 8-month-old male HCM mice (12). We assessed mRNA levels of β MyHC, ANF, and sACT in the left ventricular myocardium of 8-month-old crossbred animals (Figure 5). Neither β_2 AR overexpression nor PLB ablation reduced the expression of hypertrophic markers in

HCM hearts. β MyHC mRNA was markedly elevated in both β_2 AR mice and HCM/ β_2 AR hearts (~25 times that of NTG littermates, and 12 times that of HCM littermates, respectively Figure 5a). Neither ANF nor sACT was upregulated in the β_2 AR mice, but expression of these genes was elevated in the HCM and HCM/ β_2 AR mice. The three mRNA levels were also significantly elevated in HCM/PLB-null mice (Figure 5c). In contrast, the mRNA levels of both ANF and sACT, but not β MyHC, were significantly less in HCM/ β ARKct mice than in HCM littermates (Figure 5b).

Discussion

We found that high-level overexpression of the β_2 AR resulted in enhanced cardiac function at early time points, but it caused toxic effects at later time points even in the absence of the HCM transgene. We found significantly improved exercise tolerance and increased %FS in β_2 AR mice between 4 and 6 months of age. To our knowledge, this is the first report of a transgenic manipulation that resulted in an increased ability to perform exercise, and it is probably a result of the markedly enhanced cardiac contractility in these animals. Similarly, in the HCM background, high-levels of β_2 AR overexpression caused a significant increase in %FS at 4 months of age, suggesting an initial benefit. The effects of this genetic manipulation may be analogous to the acute positive effect seen with β AR agonists. However, the hypercontractility observed in younger β_2 AR animals was no longer present at 8 months of age, and histology revealed myocardial fibrosis. By 1 year, we observed elevated mortality in the β_2 AR mice, and surviving animals had significantly impaired systolic function. In the HCM background, β_2 AR overexpression ultimately resulted in severe heart failure, with increased mortality, extreme cardiac dilation and fibrosis, and impaired cardiac function.

Toxic effects of β AR signaling on the heart have previously been observed in response to isoproterenol administration, extremely high levels of β_2 AR overexpression (≥ 100 -fold) (8, 21), low levels of β_1 AR overex-

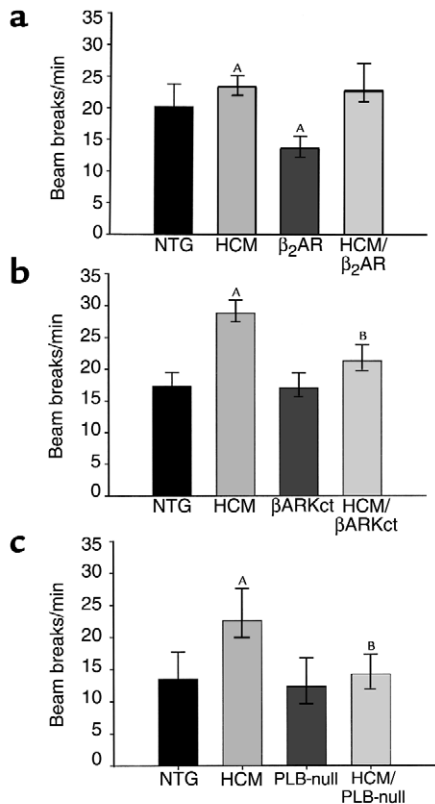


Figure 4

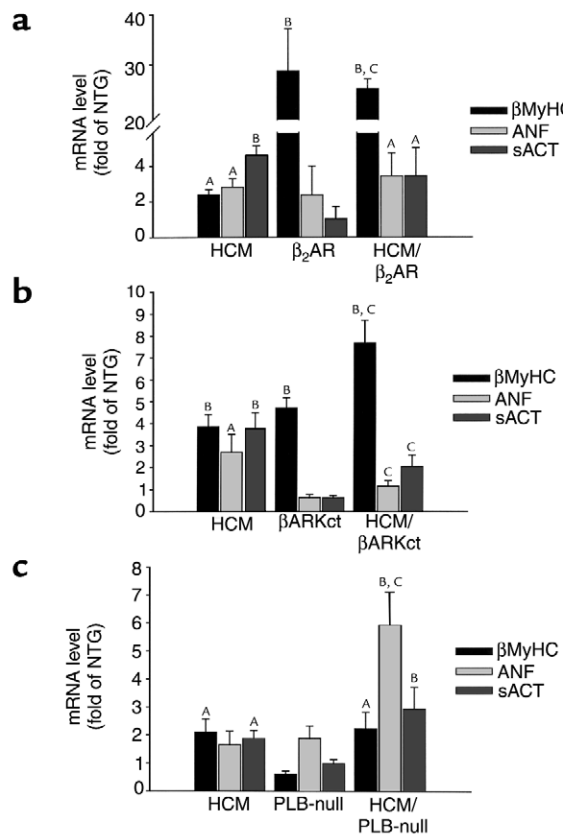
Treadmill exercise tolerance of cross-bred mice measured as beam breaks per minute. Mice were run five times for 1 hour at 20 m/min, and scores for each animal were averaged. (a) HCM \times β_2 AR mice (NTG, $n = 8$; HCM, $n = 6$; β_2 AR, $n = 8$; HCM/ β_2 AR, $n = 5$). (b) HCM \times β ARKct mice (NTG, $n = 6$; HCM, $n = 8$; β ARKct, $n = 8$; HCM/ β ARKct, $n = 8$). (c) HCM \times PLB-null mice (NTG, $n = 8$; HCM, $n = 7$; PLB-null, $n = 7$; HCM/PLB-null, $n = 8$). ^A $P < 0.01$ vs. NTG; ANOVA. ^B $P < 0.05$ vs. HCM; ANOVA.

In contrast to the toxic effects noted with high-level β_2 AR overexpression, β ARK inhibition and phospholamban ablation both prevented systolic dysfunction and exercise intolerance in the HCM mice. It is interesting to note that while PLB ablation completely prevented both cardiac dysfunction and histopathology in the MLP-null cardiomyopathic mice, β ARK inhibition improved functional but not histological phenotypes (6, 7). In our experiments, functional improvements were noted in both HCM/PLB-null mice and HCM/ β ARKct mice despite the continued presence of histopathology typical of the parental HCM line. β_2 AR overexpression, β ARK inhibition, and phospholamban ablation are similar in that all three manipulations result in increased cardiac contraction and relaxation rates (13–15). One interpretation of the differing effects of these manipulations on disease progression in the HCM mice is that there is a therapeutic window for increased cardiac contraction or relaxation, i.e., that lesser amounts of contractile support are better tolerated than higher amounts. High-level β_2 AR

pression (~5-fold) (22), and overexpression of G_{cs} , the signaling protein that couples β ARs to adenylyl cyclase (23). Under physiological conditions, it is likely that the toxic effects of elevated adrenergic drive are mediated primarily by β_1 ARs, which have a higher affinity for norepinephrine and which primarily stimulate G_s , in contrast to β_2 AR stimulation, which can strongly stimulate G_i and may even be protective against cardiac myocyte apoptosis (5, 24). However, extremely high levels of β_2 AR overexpression as in the TG4 mouse line used here (~200-fold) may cause aberrant receptor coupling that induces effects similar to the β_1 AR signal. These results are consistent with recently reported findings that although chronically increased β_2 AR signaling might have therapeutic value in cardiomyopathy, receptor overexpression must be kept within a therapeutic window because of potential detrimental effects (8, 21). This is also consistent with recent reports showing that positive inotropes, when administered in low doses, can provide long-term therapeutic benefit (25).

Figure 5

Gene expression in cross-bred mouse hearts as assessed by slot blot of RNA extracted from left ventricular myocardium. All signals were normalized to GAPDH expression and are shown as fold of NTG. (a) HCM \times β_2 AR mice (NTG, $n = 8$; HCM, $n = 10$; β_2 AR, $n = 6$; HCM/ β_2 AR, $n = 4$). (b) HCM \times β ARKct mice (NTG, $n = 9$; HCM, $n = 10$; β ARKct, $n = 10$; HCM/ β ARKct, $n = 11$). (c) HCM \times PLB-null mice (NTG, $n = 10$; HCM, $n = 9$; PLB-null, $n = 10$; HCM/PLB-null, $n = 10$). ^A $P < 0.05$ vs. NTG; ANOVA. ^B $P < 0.01$ vs. NTG; ANOVA. ^C $P < 0.05$ vs. HCM; ANOVA.



overexpression induced maximal cardiac contractile parameters, such that addition of isoproterenol did not further increase cardiac contraction or relaxation as measured *in vivo* by catheterization (13). In the HCM mice, β_2 AR overexpression initially increased inotropy to a greater extent than expression of β ARKct or PLB ablation, as the %FS in 4-month-old HCM/ β_2 AR mice was significantly higher than in NTG controls. Unlike β_2 AR overexpression, expression of β ARKct caused a submaximal increase in both inotropic and lusitropic parameters, as isoproterenol administration caused further increases in both contraction and relaxation rates *in vivo* (14). Thus, despite increased basal β -adrenergic stimulation, β ARKct animals retain some degree of β AR-mediated inotropic reserve. PLB ablation was also associated with significantly enhanced basal contractile parameters and attenuated, but not abolished, responses to isoproterenol *in vivo* (25, 26). The %FS in HCM/ β ARKct or HCM/PLB-null mice was not increased over that of NTG controls at any time point, although systolic function was significantly greater than in HCM littermates at 12 months of age. Maintenance of the ability of the β AR signal system to regulate cardiac Ca^{2+} fluxes and contractile parameters in response to differing environmental conditions may be an important consideration in treating heart failure.

Another possible explanation for the different outcomes of the three types of HCM crosses is that the site of the genetic/biologic inotropic or lusitropic effect is critical. This is potentially relevant to the HCM/ β_2 AR versus the HCM/PLB-null animals, where in the case of the latter no increase in Ca^{2+} channel-mediated Ca^{2+} influx occurs, and diastolic Ca^{2+} levels would be expected to be decreased. This might lead to less of a tendency to activate Ca^{2+} -dependent signaling pathways that culminate in cardiomyopathic alterations in gene expression (27). The lack of a chronotropic effect of PLB ablation (15) compared with β_2 AR overexpression (13) also fits into this scenario, inasmuch as an increase in heart rate may be energetically unfavorable and/or arrhythmogenic.

It is also possible that the beneficial effects of PLB ablation or β ARK inhibition via β ARKct expression are due to effects in cardiac myocytes other than increased cardiac contractility. Clinical experience has shown that the direct stimulation of cardiac contractility (used by positive inotropic agents such as dobutamine and milrinone) does not provide long-term benefit, and the benefit observed via ACE inhibitors or β AR-blockers is attributed to biologic effects, particularly the reversal of myocardial remodeling, rather than direct inotropic increases (4). Both ACE inhibitors and β AR-blockers attenuate cardiac remodeling, and, in the case of some β AR blockers, “reverse remodeling” has been reported, with regression of myocardial mass and normalization of ventricular shape (4). High-level β_2 AR overexpression clearly increased pathological remodeling in the HCM hearts, causing significant hypertrophy and dilation (Figure 1). In contrast, HCM/ β ARKct mice were not hypertrophied to the same extent as HCM littermates were (Table 1). β ARK inhibition also decreased the

expression of two molecular markers of hypertrophy, ANF and α -skeletal actin, in the HCM background (Figure 5). This suggests that β ARK inhibition reversed hypertrophic remodeling in the HCM hearts.

In contrast, the improved functional phenotype of the HCM/PLB-null animals was accompanied by significant cardiac hypertrophy, with greater heart/body weight ratios than either HCM or PLB-null littermates. Given that both the HCM and PLB-null animals had significantly increased heart/body weights ($\sim 10\%$) compared with NTG littermate controls, the approximately 30% increase in heart/body weights in HCM/PLB-null littermates appears to be due to an additive effect, and it is interesting to speculate that the type of hypertrophy contributed by the HCM transgene is different from that contributed by PLB ablation. In the case of PLB-null mice, hypertrophy is not accompanied by increased expression of hypertrophic markers and histopathology, supporting the notion that the cardiac hypertrophy in PLB-null mice is physiologically different from that of the HCM mice. Further study of the differential nature of pathological hypertrophy in disease such as HCM versus nonpathological cardiac hypertrophy, such as that which may occur in PLB-null animals or in response to exercise training, is warranted.

Finally, our results strongly support the idea that β ARK1 activity plays a key role in the progression of cardiac decompensation. Expression of the β ARKct peptide has now been shown to provide beneficial effects in several models of cardiomyopathy (7, 9). The β ARKct peptide contains the terminal 194 amino acids of β ARK1, including a domain that binds and sequester $G_{\beta\gamma}$, thereby preventing targeting of endogenous β ARK1 to the sarcolemmal membrane. The $G_{\beta\gamma}$ -binding domain bears significant homology to the pleckstrin homology domains that are found in a variety of signaling molecules such as Ras-GAP, so it is possible that expression of the β ARKct peptide interferes with other protein-protein interactions in the cardiac myocyte (28). Although other effects of β ARKct expression cannot be excluded, several lines of evidence suggest that inhibition of β ARK1 is the primary mechanism for its salutary effects. β ARK1 levels are increased in cardiac hypertrophy and heart failure (29), and we have previously reported increased β ARK1 levels and activity in the hearts of 8-month-old male HCM mice (12). Besides the demonstrated ability of β ARK1 to uncouple β ARs and decrease cardiac contractility, β ARK1 has also been shown to induce MAP kinase signaling in model systems (30). Members of the MAP kinase family have been implicated in cardiac muscle hypertrophy and in apoptosis (31), and we might speculate that the shunting of β ARs to MAP kinase signal pathways may be responsible for triggering cardiac remodeling. In HCM/ β_2 AR mice, the high level of β_2 AR overexpression might increase the substrate for β ARK1, which is elevated in the HCM hearts (12), leading to increased formation of β AR/ β arrestin/c-Src complexes and subsequent MAP kinase signaling (30), triggering the rapidly progressive remodeling and heart failure we observed in

these animals. Inhibition of β ARK1 prevented cardiac hypertrophy in the HCM mice, consistent with this hypothesis. Interestingly, carvedilol, a third-generation β AR-blocker that reverses remodeling and decreases long-term morbidity and mortality in heart failure (1), decreased cardiac β ARK1 activity when administered to mice (32). Furthermore, in the casequestrin overexpression model of heart failure, both β ARK inhibition and β -adrenergic blockade provided salutary effects which were completely synergistic (33). β ARK inhibition, but not β_2 AR overexpression or phospholamban ablation, has also been shown to provide protective effects against ischemic injury (34, 35).

In conclusion, it seems likely that neither chronically enhanced β AR signaling nor abnormally desensitized β ARs will provide optimal cardiac function in the context of cardiomyopathy. Prevention of cardiac dysfunction in HCM mice by phospholamban ablation supports the idea that the phospholamban-SR Ca^{2+} ATPase interaction is a good target for therapy of heart disease. However, PLB is reduced in both the β_2 AR overexpressers (36) and the β ARK inhibitor mice (E.G. Kranias, unpublished observations), which have very different phenotypes, suggesting that decreasing PLB alone is not the sole basis for the phenotypes of the cross-bred mice described here. β ARK1 inhibition not only prevented cardiac dysfunction, but it also prevented cardiac remodeling and hypertrophic gene expression in HCM mice. The finding of dramatic effects on the HCM cardiomyopathic phenotype by inhibition of a single molecule, β ARK1, suggests that this protein may represent a therapeutic target with significant potential for preventing the progression of heart failure.

Acknowledgments

This work was supported in part by grants from the NIH (HL50560 to L.A. Leinwand; P40 RR12358 to E.G. Kranias, and HL61690 to W.J. Koch). R.J. Lefkowitz is an Investigator of the Howard Hughes Medical Institute.

- Packer, M., et al. 1996. The effect of carvedilol on morbidity and mortality in patients with chronic heart failure. U.S. Carvedilol Heart Failure Study Group. *N. Engl. J. Med.* **334**:1349–1355.
1999. The Cardiac Insufficiency Bisoprolol Study II (CIBIS-II): a randomized trial. *Lancet.* **353**:9–13.
1999. Effect of metoprolol CR/XL in chronic heart failure: Metoprolol CR/XL Randomised Intervention Trial in Congestive Heart Failure (MERIT-HF). *Lancet.* **353**:2001–2007.
- Bristow, M.R. 2000. β -adrenergic receptor blockade in chronic heart failure. *Circulation.* **101**:558–569.
- Lefkowitz, R.J., Rockman, H.A., and Koch, W.J. 2000. Catecholamines, cardiac β -adrenergic receptors, and heart failure. *Circulation.* **101**:1634–1637.
- Minamisawa, S., et al. 1999. Chronic phospholamban-sarcoplasmic reticulum calcium ATPase interaction is the critical calcium cycling defect in dilated cardiomyopathy. *Cell.* **99**:313–322.
- Rockman, H.A., et al. 1998. Expression of a β -adrenergic receptor kinase 1 inhibitor prevents the development of myocardial failure in gene-targeted mice. *Proc. Natl. Acad. Sci. USA.* **95**:7000–7005.
- Dorn, G.W., Tepe, N.M., Lorenz, J.N., Koch, W.J., and Liggett, S.B. 1999. Low- and high-level transgenic expression of β_2 -adrenergic receptors differentially affect cardiac hypertrophy and function in Galphaq-overexpressing mice. *Proc. Natl. Acad. Sci. USA.* **96**:6400–6405.
- Harding, V.B., Rapacciuolo, A., Mao, L., Lefkowitz, R.J., and Rockman, H. 1999. β ARK1 inhibition improves survival and cardiac function in a mouse model of severe cardiomyopathy. *Circulation.* **100**(Suppl. 1):I-552. (Abstr.)

- Solaro, R.J. 1999. Is calcium the 'cure' for dilated cardiomyopathy? *Nat. Med.* **5**:1353–1354.
- Vikstrom, K.L., Factor, S.M., and Leinwand, L.A. 1996. Mice expressing mutant myosin heavy chains are a model for familial hypertrophic cardiomyopathy. *Mol. Med.* **2**:556–567.
- Freeman, K., et al. 2001. Progression from hypertrophic to dilated cardiomyopathy in mice that express a mutant myosin transgene. *Am. J. Physiol.* **280**:4151–4159.
- Milano, C.A., et al. 1994. Enhanced myocardial function in transgenic mice overexpressing the β_2 -adrenergic receptor. *Science.* **264**:582–586.
- Koch, W.J., et al. 1995. Cardiac function in mice overexpressing the β_2 -adrenergic receptor kinase or a β ARK inhibitor. *Science.* **268**:1350–1353.
- Luo, W., et al. 1994. Targeted ablation of the phospholamban gene is associated with markedly enhanced myocardial contractility and loss of β -agonist stimulation. *Circ. Res.* **75**:401–409.
- Tardiff, J.C., et al. 1999. Cardiac troponin T mutations result in allele-specific phenotypes in a mouse model for hypertrophic cardiomyopathy. *J. Clin. Invest.* **104**:469–481.
- Jones, W.K., et al. 1996. Ablation of the murine α myosin heavy chain gene leads to dosage effects and functional deficits in the heart. *J. Clin. Invest.* **98**:1906–1917.
- Desai, K.H., Schauble, E., Luo, W., Kranias, E., and Bernstein, D. 1999. Phospholamban deficiency does not compromise exercise capacity. *Am. J. Physiol.* **276**:H1172–H1177.
- Schwartz, K., et al. 1986. α -skeletal muscle actin mRNA's accumulate in hypertrophied adult rat hearts. *Circ. Res.* **59**:551–555.
- Calderone, A., Takahashi, N., Izzo, N.J., Jr., Thaik, C.M., and Colucci, W.S. 1995. Pressure- and volume-induced left ventricular hypertrophies are associated with distinct myocyte phenotypes and differential induction of peptide growth factor mRNAs. *Circulation.* **92**:2385–2390.
- Liggett, S.B., et al. 2000. Early and delayed consequences of β_2 -adrenergic receptor overexpression in mouse hearts: critical role for expression level. *Circulation.* **101**:1707–1714.
- Engelhardt, S., Hein, L., Wiesmann, F., and Lohse, M.J. 1999. Progressive hypertrophy and heart failure in β_1 -adrenergic receptor transgenic mice. *Proc. Natl. Acad. Sci. USA.* **96**:7059–7064.
- Iwase, M., et al. 1997. Cardiomyopathy induced by cardiac Gs α overexpression. *Am. J. Physiol.* **272**:H585–H589.
- Communal, C., Singh, K., Sawyer, D.B., and Colucci, W.S. 1999. Opposing effects of β_1 - and β_2 -adrenergic receptors on cardiac myocyte apoptosis: role of a pertussis toxin-sensitive G protein. *Circulation.* **100**:2210–2212.
- Lowes, B.D., et al. 2000. Low-dose enoximone improves exercise capacity in chronic heart failure. Enoximone Study Group. *J. Am. Coll. Cardiol.* **36**:501–508.
- Hoit, B.D., Khoury, S.F., Kranias, E.G., Ball, N., and Walsh, R.A. 1995. In vivo echocardiographic detection of enhanced left ventricular function in gene-targeted mice with phospholamban deficiency. *Circ. Res.* **77**:632–637.
- Lorenz, J.N., and Kranias, E.G. 1997. Regulatory effects of phospholamban on cardiac function in intact mice. *Am. J. Physiol.* **273**:H2826–H2831.
- Frey, N., McKinsey, T.A., and Olson, E.N. 2000. Decoding calcium signals involved in cardiac growth and function. *Nat. Med.* **6**:1221–1227.
- Inglese, J., Freedman, N.J., Koch, W.J., and Lefkowitz, R.J. 1993. Structure and mechanism of the G protein-coupled receptor kinases. *J. Biol. Chem.* **268**:23735–23738.
- Ungerer, M., et al. 1994. Expression of β -arrestins and β -adrenergic receptor kinases in the failing human heart. *Circ. Res.* **74**:206–213.
- Luttrell, L.M., et al. 1999. β -arrestin-dependent formation of β_2 adrenergic receptor-Src protein kinase complexes. *Science.* **283**:655–661.
- Wang, Y., et al. 1998. Cardiac muscle cell hypertrophy and apoptosis induced by distinct members of the p38 mitogen-activated protein kinase family. *J. Biol. Chem.* **273**:2161–2168.
- Harding, V., Jones, L.R., Lefkowitz, R.J., Koch, W.J., and Rockman, H.A. 2001. Cardiac BARK inhibition improves survival and augments β blocker therapy in a mouse model of severe heart failure. *Proc. Natl. Acad. Sci. USA.* In press.
- Iaccarino, G., Tomhave, E.D., Lefkowitz, R.J., and Koch, W.J. 1998. Reciprocal in vivo regulation of myocardial G protein-coupled receptor kinase expression by β -adrenergic receptor stimulation and blockade. *Circulation.* **98**:1783–1789.
- Cross, H.R., Steenbergen, C., Lefkowitz, R.J., Koch, W.J., and Murphy, E. 1999. Overexpression of the cardiac β_2 -adrenergic receptor and expression of a β -adrenergic receptor kinase-1 (β ARK1) inhibitor both increase myocardial contractility but have differential effects on susceptibility to ischemic injury. *Circ. Res.* **85**:1077–1084.
- Cross, H.R., Steenbergen, C., Jr., and Murphy, E. 1999. Phospholamban knock-out (PLB-KO) mice exhibit increased susceptibility to myocardial ischemic injury: a gender-specific effect. *Circulation.* **100**(Suppl. 1):I-767. (Abstr.)