

The receptor for advanced glycation end products (RAGE) is a central mediator of the interaction of AGE-beta2microglobulin with human mononuclear phagocytes via an oxidant-sensitive pathway. Implications for the pathogenesis of dialysis-related amyloidosis.

T Miyata, ... , Y Iida, A M Schmidt

J Clin Invest. 1996;**98**(5):1088-1094. <https://doi.org/10.1172/JCI118889>.

Research Article

An important component of amyloid fibrils in dialysis-related amyloidosis is a form of beta2microglobulin modified with advanced glycation end products (AGEs) of the Maillard reaction, known as AGE-beta2M. We demonstrate here that the interaction of AGE-beta2M with mononuclear phagocytes (MPs), cells important in the pathogenesis of the inflammatory arthropathy of dialysis-related amyloidosis, is mediated by the receptor for AGEs, or RAGE. ¹²⁵I-AGE-beta2M bound to immobilized RAGE or to MPs in a specific, dose-dependent manner (K_d approximately 53.5 and approximately 81.6 nM, respectively), a process inhibited in the presence of RAGE blockade. AGE-beta2M-mediated monocyte chemotaxis was prevented by excess sRAGE or anti-RAGE IgG. Induction of tumor necrosis factor-alpha (TNF) expression by MPs exposed to AGE-beta2M resulted from engagement of RAGE, as appearances of TNF transcripts and TNF antigen release into culture supernatants were prevented by addition of sRAGE, a process mediated, at least in part, by oxidant stress. AGE-beta2M reduced cytochrome c and the elaboration of TNF by MPs was inhibited by N-acetylcysteine. Consistent with these data, immunohistochemical studies of AGE-laden amyloid deposits of a long-term hemodialysis patient revealed positive staining for RAGE in the MPs infiltrating these lesions. These data indicate that RAGE is a central binding site for AGEs formed in vivo and suggest that AGE-beta2M-MP-RAGE interaction likely contributes to the initiation of an inflammatory response in amyloid deposits [...]

Find the latest version:

<https://jci.me/118889/pdf>



The Receptor for Advanced Glycation End Products (RAGE) Is a Central Mediator of the Interaction of AGE- β_2 Microglobulin with Human Mononuclear Phagocytes Via an Oxidant-sensitive Pathway

Implications for the Pathogenesis of Dialysis-related Amyloidosis

Toshio Miyata, Osamu Hori,* JingHua Zhang,* Shi Du Yan,* Luis Ferran,* Yoshiyasu Iida, and Ann Marie Schmidt*

Department of Internal Medicine, Branch Hospital, Nagoya University School of Medicine, Nagoya, 461, Japan; and *Departments of Surgery, Medicine, Pathology and Physiology, Columbia University College of Physicians and Surgeons, New York 10032

Abstract

An important component of amyloid fibrils in dialysis-related amyloidosis is a form of β_2 microglobulin modified with advanced glycation end products (AGEs) of the Maillard reaction, known as AGE- β_2 M. We demonstrate here that the interaction of AGE- β_2 M with mononuclear phagocytes (MPs), cells important in the pathogenesis of the inflammatory arthropathy of dialysis-related amyloidosis, is mediated by the receptor for AGEs, or RAGE. 125 I-AGE- β_2 M bound to immobilized RAGE or to MPs in a specific, dose-dependent manner ($K_d \approx 53.5$ and ≈ 81.6 nM, respectively), a process inhibited in the presence of RAGE blockade. AGE- β_2 M-mediated monocyte chemotaxis was prevented by excess sRAGE or anti-RAGE IgG. Induction of tumor necrosis factor- α (TNF) expression by MPs exposed to AGE- β_2 M resulted from engagement of RAGE, as appearances of TNF transcripts and TNF antigen release into culture supernatants were prevented by addition of sRAGE, a process mediated, at least in part, by oxidant stress. AGE- β_2 M reduced cytochrome *c* and the elaboration of TNF by MPs was inhibited by *N*-acetylcysteine. Consistent with these data, immunohistochemical studies of AGE-laden amyloid deposits of a long-term hemodialysis patient revealed positive staining for RAGE in the MPs infiltrating these lesions. These data indicate that RAGE is a central binding site for AGEs formed in vivo and suggest that AGE- β_2 M-MP-RAGE interaction likely contributes to the initiation of an inflammatory response in amyloid deposits of long-term hemodialysis patients, a process which may ultimately lead to bone and joint destruction. (*J. Clin. Invest.* 1996. 98:1088–1094.) Key words: glycated proteins • cytokines • long-term hemodialysis patients • monocyte • amyloidosis

Address correspondence to Dr. Ann Marie Schmidt, Columbia University College of Physicians and Surgeons, 630 W. 168th Street, P&S 11-518, New York, NY 10032. Phone: 212-305-6406; FAX: 212-305-5337.

Received for publication 11 January 1996 and accepted in revised form 24 June 1996.

J. Clin. Invest.

© The American Society for Clinical Investigation, Inc.

0021-9738/96/08/1088/07 \$2.00

Volume 98, Number 5, September 1996, 1088–1094

Introduction

Proteins or lipids exposed to aldose sugars undergo nonenzymatic glycation and oxidation (1–7). Initially, the reversible early glycation adducts form, the best known of which is hemoglobin A_{1c}, used as an index of glycemic control in diabetic patients. After further complex molecular rearrangements, the irreversible advanced glycation end products (AGEs)¹ form. Conditions favoring AGE formation include those in which protein/lipid turnover is prolonged or delayed on lysine-rich structures, especially in the setting of elevated levels of aldose sugars, such as in diabetes. AGE formation can occur even in the euglycemic state, as in hypercholesterolemic rabbits without diabetes, in which macromolecules are trapped in the expanded neointima in atherosclerosis-prone animals (8).

While the generation of AGEs is particularly likely in the diabetic milieu given relatively sustained hyperglycemia (1–4), the tendency toward generation of AGEs is also favored on long-lived proteins, such as those central in the pathogenesis of amyloidosis. In Alzheimer's disease, AGE modification occurs on components of the intracellular neurofibrillary tangles and in extracellular amyloid- β peptide (9–11). In a different context, renal failure presents a unique pathophysiological setting for the development of AGE formation on certain proteins which otherwise would not be susceptible to such irreversible modification, such as those that normally circulate in the plasma for limited periods of time, the handling of which is largely controlled by functioning kidneys. Our previous work has identified the presence of an irreversibly glycosylated form of β_2 M in the amyloid fibrils of long-term hemodialysis patients who develop dialysis-related amyloidosis (DRA) (12, 13). As the interaction of AGEs with cellular elements is a principal mechanism through which these glycosylated adducts exert their biologic effects (14–18), we sought to characterize in molecular terms AGE- β_2 M-mediated perturbation of mononuclear phagocytes (MPs), the latter believed to have a pivotal role in the pathogenesis of DRA. We demonstrate here that AGE engagement of the monocyte receptor for AGE, or RAGE, a cell surface polypeptide of the immunoglobulin superfamily (14, 19), is a first step in AGE- β_2 M-mediated activation of MPs. That is, RAGE mediates the binding of AGE- β_2 M to the cell

1. Abbreviations used in this paper: AGE, advanced glycation end product; AGE- β_2 M, AGE-modified β_2 microglobulin; DRA, dialysis-related amyloidosis; MPs, mononuclear phagocytes; RAGE, receptor for advanced glycation end product.

surface, as well as AGE- β_2 M-induced monocyte chemotaxis and tumor necrosis factor- α (TNF) expression. MP activation after exposure to AGE- β_2 M, with production of TNF, was likely to result from oxidant-sensitive mechanisms, as shown by inhibition in the presence of *N*-acetylcysteine. Immunohistochemical studies confirmed staining for RAGE antigen in the mononuclear cells infiltrating amyloid deposits of long-term hemodialysis patients. Taken together, these data indicate a potential role of AGE-RAGE interaction in the pathogenesis of the inflammatory events associated with DRA.

Methods

Purification of nonglycated and AGE- β_2 M. Nonglycated and AGE- β_2 M were purified and characterized from the urine of long-term hemodialysis patients according to previously published methods (12, 13). Characteristic of AGEs, AGE- β_2 M was brown in color and fluoresced (4, 20) and was further characterized as an AGE by its immunoreactivity with anti-AGE antibodies which recognize AGE-bovine serum albumin, AGE-human serum albumin, and AGE-hemoglobin, but not nonglycated products nor the early, reversible products of the Maillard reaction (12, 21).

Endotoxin removal from purified β_2 M and AGE- β_2 M. Endotoxin was removed from the *in vivo* isolated glycated and nonglycated forms of β_2 M as previously described (12). Endotoxin levels were measured by a kit from Seikagaku Corp. (Tokyo, Japan) and all materials used in these studies were subsequently found to be endotoxin free (< 0.5 U/ml).

Purification of rat RAGE and preparation of antisera. Rat RAGE was purified to homogeneity from lung powder (Sigma Immunochemicals, St. Louis, MO) using methods similar to those described for the purification of bovine RAGE (14). Rat RAGE, which bears significant ($> 90\%$) homology to human RAGE, demonstrates immunoreactivity with anti-RAGE IgG and amino-terminal and internal sequencing indicated identity to the predicted sequence for rat RAGE based on that deduced from the rat cDNA (Schmidt, A.M., unpublished observation). Based on $\approx 32,000$ M_r and comparison with RAGE purified from bovine lung, rat lung RAGE also most likely represents the amino-terminal two-thirds of the molecule (i.e., the extracellular domain; 19) and is identified as soluble RAGE or sRAGE. Monospecific, polyclonal antiserum to rat RAGE was purified by chromatography on protein A (Schleicher & Schuell, Keene, NH) according to the manufacturer's instructions. F(ab')₂ fragments were prepared from IgG using a kit from Pierce (Rockville, IL) according to the manufacturer's instructions. Nonimmune IgG and F(ab')₂ fragments were similarly prepared from sera derived from rabbits not immunized with RAGE.

Binding assays. AGE- β_2 M or nonglycated β_2 M was radiolabeled by the lactoperoxidase method (22) to a specific activity of 2.7 and 3.0×10^4 cpm/ng, respectively, and bound to immobilized RAGE ($5 \mu\text{g}/\text{well}$, previously dissolved in bicarbonate/carbonate buffer [pH 9.6] after an overnight incubation at 4°C). Wells were subsequently washed with PBS (pH 7.4), blocked with PBS containing bovine serum albumin (1%), and then a binding assay was carried out with the indicated concentrations of radiolabeled protein with or without a 25-fold molar excess of the respective unlabeled protein for 3 h at 37°C . After washing with PBS, wells were eluted with buffer containing heparin (1 mg/ml; Sigma Immunochemicals) as previously described (14, 15, 18, 19) and counted in a gamma counter (LKB, Gaithersburg, MD). Specific binding, as shown in Fig. 1, A–E, was defined as total binding minus binding in the presence of excess unlabeled material (i.e., nonspecific binding) and analyzed by the methods of Klotz and Hunston (23). Where indicated, AGE- β_2 M was preincubated with the indicated concentration of sRAGE or human serum albumin for 2 h at 37°C , and then binding was carried out as above. In other experiments, human peripheral blood-derived MPs, isolated as previously described (15), were placed in wells of 96-well tissue culture

plates (2.5×10^5 cells/well), and then a binding assay was performed with the indicated concentrations of radiolabeled AGE- β_2 M or nonglycated β_2 M with or without a 25-fold molar excess of the respective unlabeled protein for 3 h at 4°C . Where indicated, radiolabeled AGE- β_2 M was preincubated with the indicated concentration of soluble RAGE or human serum albumin, or MPs were preincubated with the indicated concentrations of anti-RAGE IgG or nonimmune IgG for 2 h at 4°C before addition of radiolabeled AGE- β_2 M. Elution was then performed with heparin-containing buffer as above.

Chemotaxis assays. Chemotaxis assays, performed in 48-well microchemotaxis chambers (Neuro-Probe, Bethesda, MD) containing polycarbonate membranes (Nucleopore, Pleasanton, CA), were performed as previously described (15) using human peripheral blood-derived MPs.

TNF- α assays. Human peripheral blood monocytes, isolated as above, were placed in the wells of 24-well tissue culture plates for 7 d in RPMI 1640 (Gibco Laboratories, Grand Island, NY) containing fetal bovine serum (10%; Gemini, Calabasas, CA). On day 8, wells were washed with PBS and incubated overnight in RPMI 1640 without serum. The following day, cells were incubated with indicated concentration of reagent for 16 h at 37°C , and supernatant was collected and assayed for TNF- α using an ELISA kit supplied by R&D Systems (Minneapolis, MN). Precipitated cells were treated with Trizol (Gibco Laboratories), RNA was prepared, and RT-PCR analysis was performed as below. Where indicated, cells and/or wells were preincubated with various reagents as indicated.

RT-PCR analysis. Human primers for TNF- α and β -actin were purchased from Stratagene (La Jolla, CA) and RT-PCR was performed according to the manufacturer's recommendations.

Assay for reactive oxygen intermediates. The cytochrome *c* assay was performed using AGE- β_2 M or its nonglycated form according to previously described methods (16, 24).

Immunohistochemistry. Cutaneous tumor consisting of amyloid deposits was obtained postmortem from a patient who had undergone hemodialysis for 16 yr. The sample was fixed in formalin (10%) and embedded in paraffin. After confirmation of the presence of amyloid material by Congo red staining and staining with anti- β_2 M antibody (13), sections were cut ($2 \mu\text{m}$) and mounted on slides and deparaffinized. Sections were then incubated with anti-RAGE IgG or nonimmune IgG according to previously published methods (14, 15) or incubated with anti-CD 68 IgG (Dako Corp., Carpinteria, CA) according to the manufacturer's instructions. In other experiments, sections were stained with affinity-purified anti-AGE IgG as described (10).

Results

Binding of AGE- β_2 M to RAGE and MPs. ^{125}I -AGE- β_2 M purified from the urine of patients with DRA bound to the extracellular domain of RAGE using the microtiter assay as described above. Specific, dose-dependent binding of radiolabeled AGE- β_2 M to immobilized RAGE was observed, with $K_d \approx 53.5$ nM (Fig. 1 A), similar to that which was observed previously (14, 15, 19). Consistent with the specificity of ^{125}I -AGE- β_2 M interaction with RAGE, preincubation of tracer with free sRAGE resulted in concentration-dependent inhibition of binding (Fig. 1 B). In contrast, equimolar concentrations of excess human serum albumin did not compete with binding of ^{125}I -AGE- β_2 M to RAGE and radiolabeled nonglycated β_2 M displayed no specific binding to RAGE (data not shown). As AGE- β_2 M has been shown to induce monocyte activation, it was likely that it would bind to the cell surface in order to subsequently trigger cellular effector mechanisms. Incubation of ^{125}I -AGE- β_2 M with MPs resulted in dose-dependent, specific binding, with $K_d \approx 81.6$ nM (Fig. 1 C), similar to the affinity of binding observed previously with AGE albumin prepared *in vitro* (15). That RAGE was involved in the interaction of ^{125}I -

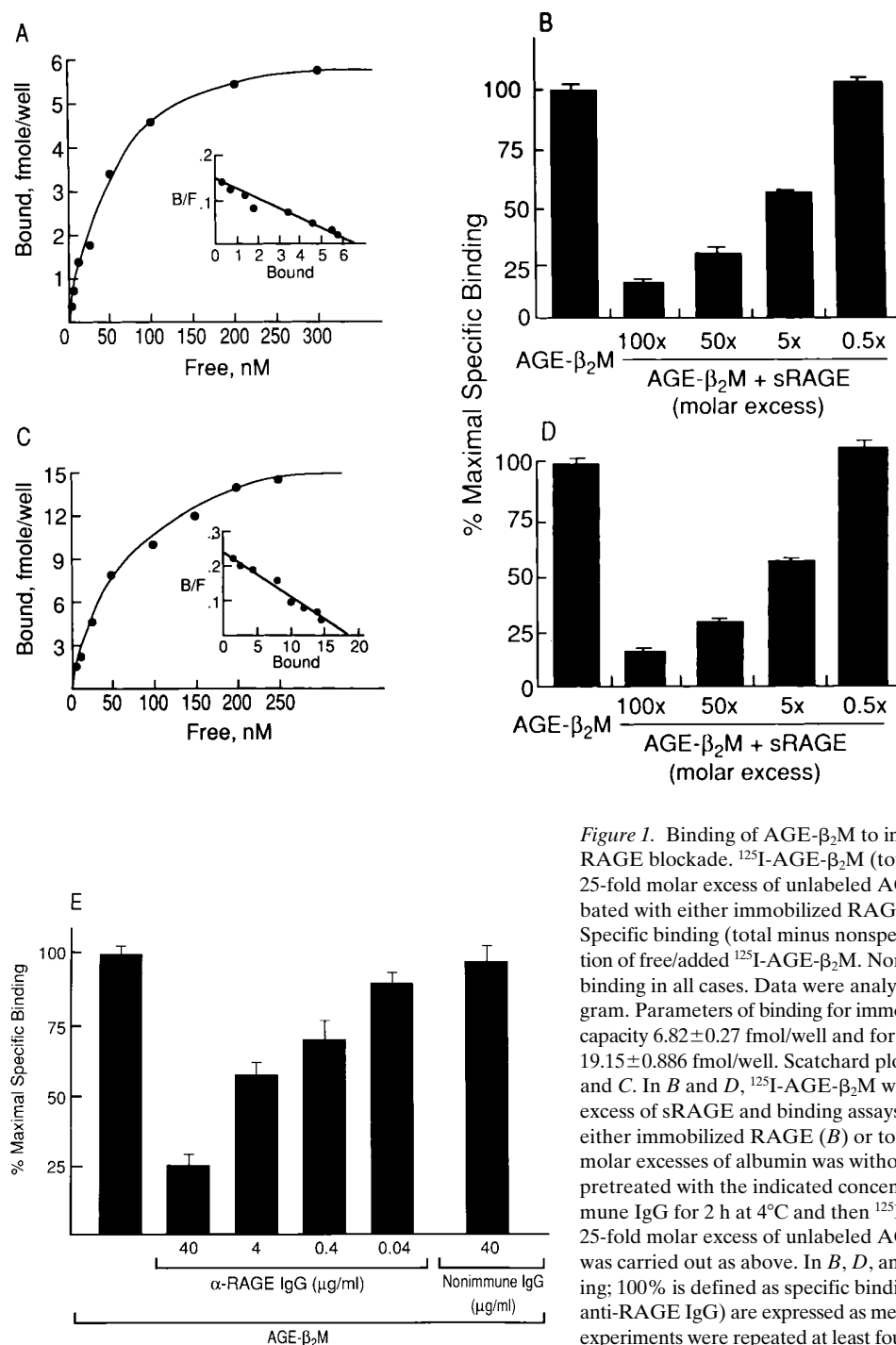


Figure 1. Binding of AGE-β₂M to immobilized RAGE and to MPs: effect of RAGE blockade. ¹²⁵I-AGE-β₂M (total binding) alone or in the presence of a 25-fold molar excess of unlabeled AGE-β₂M (nonspecific binding) was incubated with either immobilized RAGE (A) or MPs (C), as described above. Specific binding (total minus nonspecific binding) is plotted against concentration of free/added ¹²⁵I-AGE-β₂M. Nonspecific binding was ≤ 25% of the total binding in all cases. Data were analyzed by the nonlinear least-squares program. Parameters of binding for immobilized RAGE: $K_d \approx 53.5 \pm 6.40$ nM and capacity 6.82 ± 0.27 fmol/well and for MPs: $K_d \approx 81.6 \pm 9.92$ nM and capacity 19.15 ± 0.886 fmol/well. Scatchard plot analysis is indicated in the insets of A and C. In B and D, ¹²⁵I-AGE-β₂M was preincubated with the indicated molar excess of sRAGE and binding assays were carried out as described above to either immobilized RAGE (B) or to MPs (D). Preincubation with equivalent molar excesses of albumin was without effect (data not shown). (E) MPs were pretreated with the indicated concentration of anti-RAGE IgG or nonimmune IgG for 2 h at 4°C and then ¹²⁵I-AGE-β₂M alone or in the presence of a 25-fold molar excess of unlabeled AGE-β₂M was added and a binding assay was carried out as above. In B, D, and E, data (percent maximal specific binding; 100% is defined as specific binding in the absence of added sRAGE or anti-RAGE IgG) are expressed as mean ± SEM of duplicate determinations and experiments were repeated at least four times.

AGE-β₂M with monocytes was supported by the inhibition of binding observed upon preincubation of tracer with increasing concentrations of sRAGE (Fig. 1 D), but not in the presence of equimolar concentrations of human serum albumin (data not shown). Further support for the concept that RAGE is a central mediator of the interaction of AGE-β₂M with MPs was demonstrated in studies using anti-RAGE IgG. Anti-RAGE IgG, but not nonimmune IgG, largely inhibited the binding of ¹²⁵I-AGE-β₂M to MPs in a dose-dependent manner (Fig. 1 E).

AGE-β₂M induced monocyte migration and TNF expression by MPs: role of RAGE. We next considered whether the

biologic sequelae of the interaction of AGE-β₂M with MPs were dependent on binding to RAGE. AGE-β₂M, but not its nonglycated form, mediated induction of monocyte chemotaxis when placed in the lower compartment of microchemotaxis chambers (Fig. 2, lines 3 and 2, respectively). Consistent with the hypothesis that this interaction was RAGE dependent, pretreatment of monocytes with anti-RAGE IgG or pretreatment of AGE-β₂M with sRAGE inhibited monocyte chemotaxis in a dose-dependent manner (Fig. 2, lines 4, 6, and 7, respectively). In contrast, nonimmune IgG (Fig. 2, line 5) or excess concentrations of albumin had no effect (data not

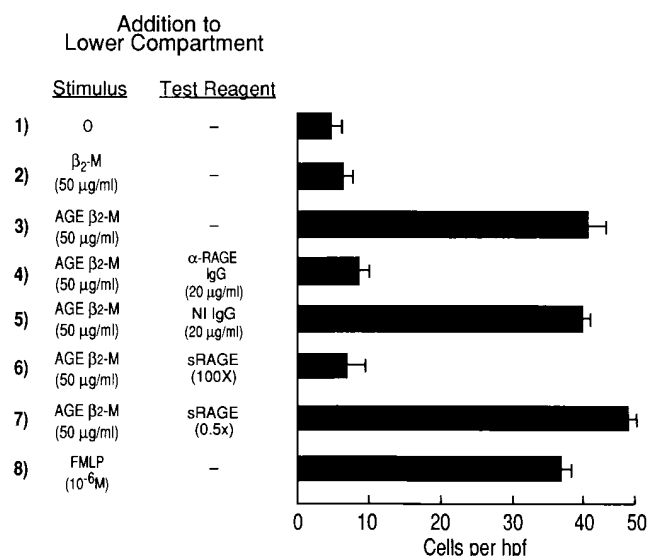


Figure 2. AGE-β₂M induces migration of MPs: effect of RAGE blockade. Native or AGE-β₂M (50 μg/ml) was added to the lower compartment of the chemotaxis chamber and MPs were added to the upper compartment alone or in the presence of anti-RAGE IgG, nonimmune IgG, or the indicated concentration of sRAGE and then chemotaxis assays were performed as described above. Positive controls used FMLP (10⁻⁶) added to the lower compartment. The x-axis represents the average number of cells in nine high power fields that had migrated across the membrane. The mean ± SEM of triplicate determinations is shown and the experiments were repeated at least twice.

shown). Similar results were observed with F(ab')₂ fragments of anti-RAGE IgG or nonimmune Ig (data not shown).

A component of the monocyte response likely to be critical in the pathogenesis of inflammatory changes in DRA is MP elaboration of cytokines after exposure to AGE-β₂M. Incubation of human MPs with AGE-β₂M, but not its nonglycated form, resulted in the appearance of TNF-α transcripts (Fig. 3 A, lanes 3 and 4, respectively) and release of antigen into culture supernatants (Fig. 3 C). To further investigate the mechanisms underlying the induction of cytokine induction by AGE-β₂M, we preincubated AGE-β₂M with a 25-fold molar excess of sRAGE and demonstrated inhibition of induction of transcripts and release of TNF-α antigen into culture supernatants (Fig. 3, B and C, respectively). In contrast, equimolar concentrations of albumin were without effect (data not shown).

One of the central means by which AGE-RAGE interaction appears to mediate the biologic effects of these pathologic ligands, is, at least in part, by the induction of enhanced cellular oxidant stress (16, 17). AGE-β₂M, but not its nonglycated counterpart, appeared to elaborate reactive oxygen intermediates, based on reduction of cytochrome c (Fig. 4 A), a process partly inhibited by superoxide dismutase (data not shown). The biologic effects of AGE-β₂M-RAGE-monocyte interaction were mediated, at least in part, by oxidant-sensitive pathways, as incubation in the presence of the antioxidant N-acetylcysteine resulted in dose-dependent inhibition of the production/release of TNF-α antigen (Fig. 4 B).

Expression of RAGE in the inflammatory cells in amyloid tissue from patient with DRA. A critical link in the association of RAGE with DRA would be the demonstration of enhanced

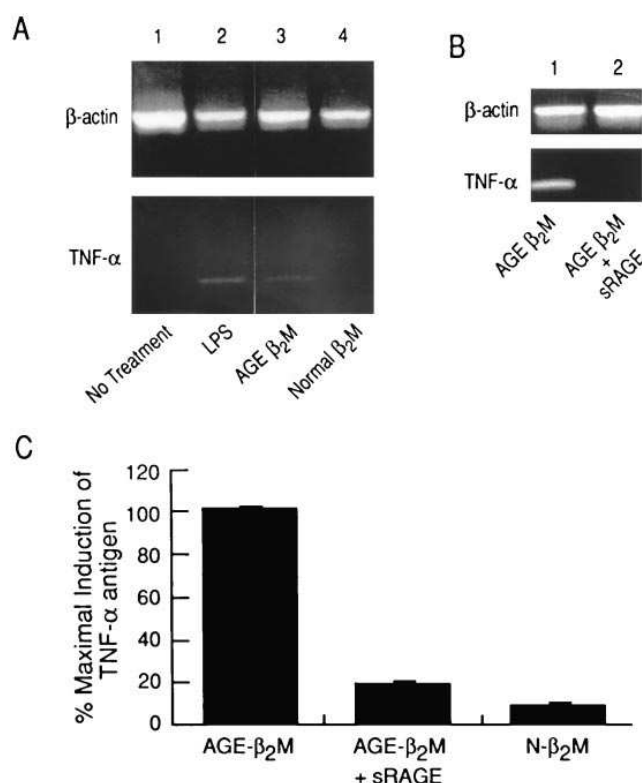


Figure 3. AGE-β₂M induces MP production of TNF: effect of sRAGE. AGE-β₂M or its nonglycated form alone or in the presence of a 25-fold molar excess of sRAGE was incubated with MPs as described above, and cells or supernatant was harvested for RT-PCR studies (A and B) or ELISA studies (C) for TNF or β-actin (in the former case). Where indicated, lipopolysaccharide (10 ng/ml) was used as positive control. In C, data are expressed as mean ± SEM (duplicate values) and experiments were repeated twice. Maximal production of TNF antigen by AGE-β₂M in these studies (defined as 100% in the figure) was ≈ 275 ± 24 pg/ml. Equimolar excesses of albumin had no effect (data not shown).

RAGE expression in amyloid tissue of patients with DRA. Studies using Congo red (Fig. 5 A) and antibodies to β₂M (Fig. 5, B and F) confirmed that the massive deposits of amyloid tissue observed in a cutaneous tumor of a patient who had undergone hemodialysis for 16 yr were composed of β₂M. Consistent with the concept that sites of amyloid were composed of irreversibly glycated AGE-β₂M, immunostaining of serial adjacent sections with affinity-purified anti-AGE IgG (Fig. 5 E) demonstrated the presence of AGE-reactive epitopes in areas of the amyloid deposit containing β₂M (Fig. 5 F). Surrounding inflammatory cells, confirmed to be monocytes by virtue of immunoreactivity with antibody to CD68 (Fig. 5, D and H), were positive for RAGE (Fig. 5, C and G). In contrast, immunostaining with nonimmune IgG was negative (data not shown).

Discussion

The interaction of AGEs with monocytes can potentially result from interaction with several cell surface polypeptides. These include p60 and p90 (25), identified in the homogenates of rat liver, the macrophage scavenger receptor (26), shown to bind glucose-modified extracellular membrane components,

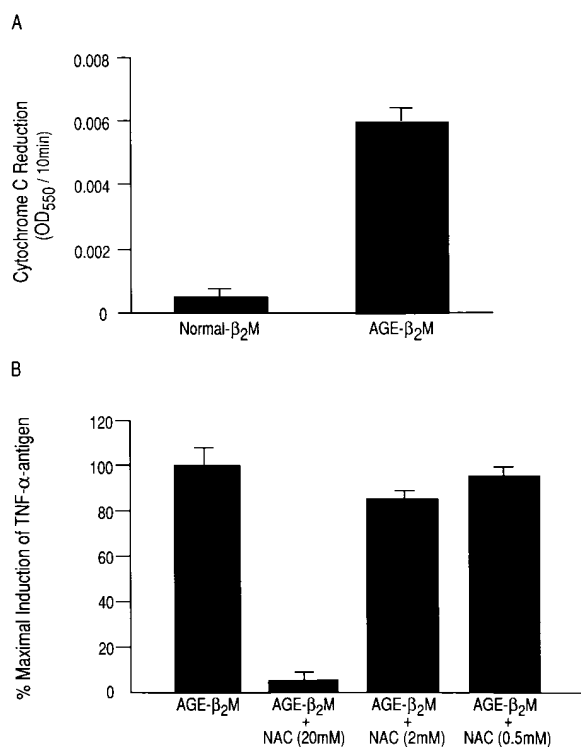


Figure 4. AGE-β₂M mediates the generation of oxidant stress: effect of *N*-acetylcysteine. AGE-β₂M, but not its nonglycated form (50 μg/ml), results in reduction of cytochrome *c* (A) as described above, a process partially inhibited in the presence of superoxide dismutase (data not shown). Data shown represent the mean ± SEM of triplicate determinations. Experiments were repeated twice. (B) MPs, isolated and prepared as above, were incubated with the indicated concentration of *N*-acetylcysteine, and supernatants were harvested and assayed for TNF. Results are expressed as percent maximal induction of TNF (279.45 ± 29.67 pg/ml) as mean ± SEM of duplicate determinations.

and RAGE. The best-characterized of these is the latter, a member of the immunoglobulin superfamily expressed by cells important in the vasculature: MPs, endothelial cells, and smooth muscle cells, as well as by certain neurons and mesangial cells (27). RAGE has been shown to centrally mediate the interaction of AGE-modified proteins with endothelium, being responsible for the initial rapid phase of clearance observed after infusion of AGE-albumin and induction of IL-6 transcripts (18). This receptor also appears to have a central role in AGE-induced perturbation of endothelial properties, including diminished barrier properties after exposure to AGEs (28) and induction of vascular cell adhesion molecule-1 expression (17). In the context of the biology of MPs, RAGE has a central role in binding of AGEs, and subsequent changes in cell migration (15).

Although it might be expected that RAGE expression is linked exclusively to hyperglycemic states, situations in which AGEs are abundant, tissue surveys have indicated a more complex picture. While RAGE and AGEs are upregulated in diabetic vasculature (29), RAGE is also expressed at high levels in developing brain and appears to serve as a receptor for the neurite-promoting polypeptide amphoterin, the latter being coexpressed in neonatal nervous tissue (30).

Another situation in which RAGE expression is enhanced accompanies immune/inflammatory disorders (Schmidt, A.M., unpublished observations). The data presented here suggest that an irreversibly glycated form of the circulating plasma protein β₂M, the clearance of which is markedly delayed in the setting of renal failure and hemodialysis which accumulates in the tissues and joints of certain individuals, interacts with RAGE on the surface of MPs. In addition to specific, largely RAGE-dependent binding, AGE-β₂M-RAGE interaction mediates monocyte chemotaxis as well as the induction of cytokines such as TNF-α by these cells. Although one might posit that this result is expected based on observations concerning RAGE and other glycated proteins, this is the first study examining cellular interactions of AGEs prepared from nondiabetic tissues. As AGEs are a heterogeneous class of structures which form under quite distinct conditions, it is important to determine in each situation the impact of nonenzymatic glycation on properties of the affected macromolecules, as well as their ability to bind to cellular surfaces.

The implications of AGE-β₂M binding to monocyte RAGE may be relevant to the pathogenesis of DRA. We have observed upregulation of RAGE in MPs of amyloid tissue of long-term hemodialysis patients and postulate that this critical inflammatory event in amyloid deposits initiates a cascade of events leading to the induction of matrix metalloproteases (31, 32), as well as other cytokines such as interleukin-6 (33, 34), ultimately priming the affected bones and joints for the development of periarticular soft tissue swelling, diffuse destructive arthropathy, and subchondral bone erosions and cysts characteristic of this clinical syndrome (35–37).

One property common to AGEs is the generation of reactive oxygen intermediates, which, after their tethering to the cell surface, produces oxidant stress as a means of perturbing target cells; for example, oxidant stress underlies activation of NF-κB and diminished barrier function consequent to binding of AGEs to endothelial RAGE (16, 17, 28). AGE-β₂M interaction with RAGE on monocytes is likely to activate cells by similar mechanisms, as *N*-acetylcysteine blocked AGE-induced monocyte expression of TNF, and AGE-β₂M, by itself, reduced cytochrome *c*. The central role of the AGEs in the generation of enhanced oxidant stress is suggested by studies in which incubation of amphoterin, a nonglycated ligand of RAGE (30), with endothelial cells or cultured neurons does not result in increased production of thiobarbituric acid reactive substances upon ligation of cellular RAGE (data not shown). Consistent with this concept, pilot studies have demonstrated that incubation of amphoterin with MPs does not result in increased production of TNF (data not shown).

These studies represent the first indication that RAGE may play a role in the development and perpetuation of certain inflammatory events, such as DRA. In addition, as recent data have revealed enhanced RAGE expression in the affected vasculature of individuals with inflammatory vasculitides, a circumstance in which AGEs are less likely to form, this strongly suggests that RAGE may interact with other ligands in certain pathological settings. In this context, we have identified a 12-kD polypeptide which binds RAGE and appears to be upregulated at sites of inflammation (Schmidt, A.M., unpublished observations). As with other immunoglobulin superfamily receptors, such as intercellular adhesion molecule-1 which also has multiple ligands (38), elucidation of the biology of RAGE in varied pathological settings will require identifica-

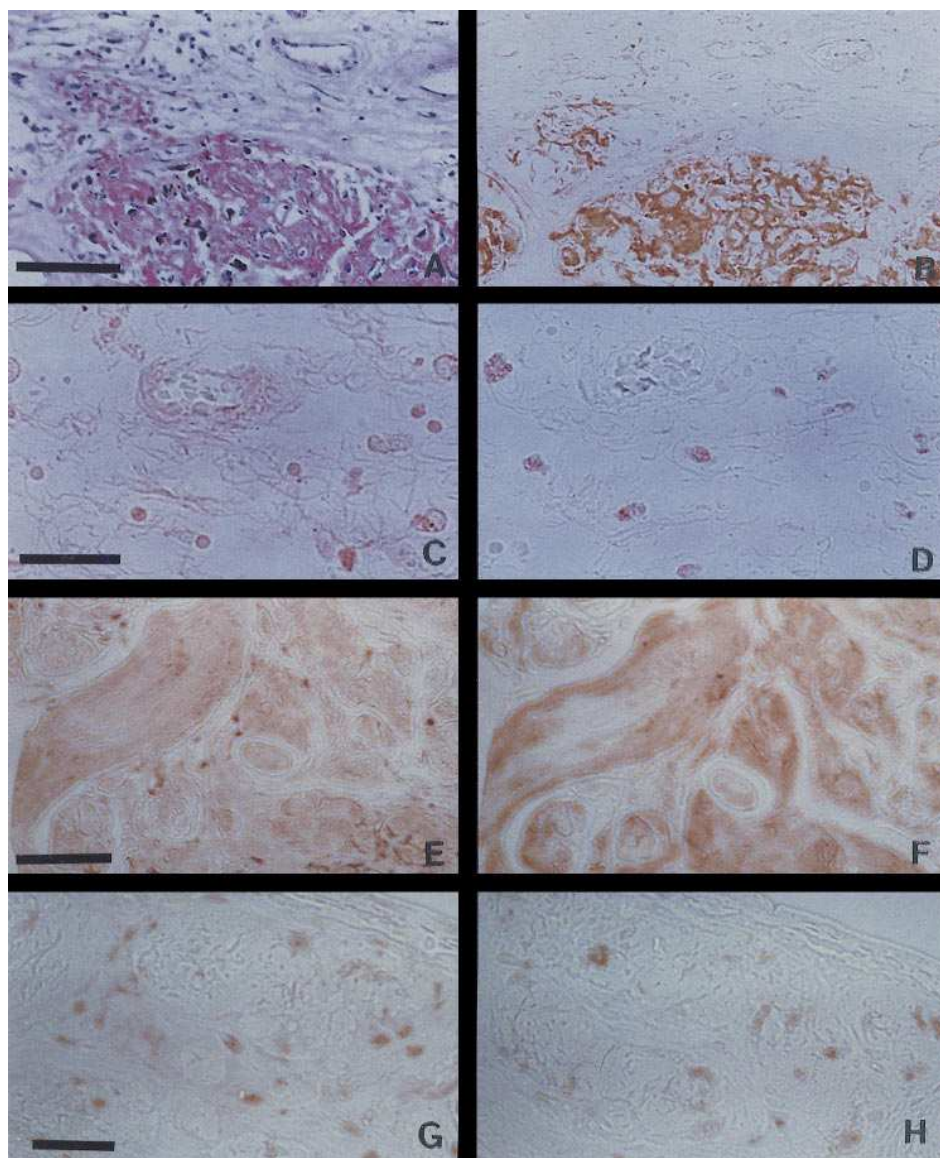


Figure 5. Colocalization of CD68 antigen and RAGE in the inflammatory cellular infiltrate associated with AGE-laden amyloid deposits of a patient with DRA. Cutaneous tumor consisting of amyloid deposits was obtained postmortem from a patient who had undergone hemodialysis for 16 yr. The sample was fixed as described above. Congo red staining (A), staining with antibodies to β_2 M (B and F), and immunostaining with anti-CD 68 IgG (7.2 μ g/ml, D and H), anti-RAGE IgG (83 μ g/ml, C and G) or affinity-purified anti-AGE IgG (30 μ g/ml, E) were performed as described above. Immunostaining with nonimmune IgG was negative (data not shown). Bars, A and B, 100 μ m and C–H, 50 μ m.

tion of the biologically relevant ligand, and dissection of the consequences of receptor activation. Intense investigation is ongoing to characterize the nature of AGE and non-AGE ligands of RAGE, as understanding these interactions is essential to define the factors which impact on and regulate RAGE expression. The results of these studies represent a critical step in the design of therapies (such as attenuating AGE formation, blocking AGE-RAGE interaction, and/or diminishing AGE-RAGE-mediated enhanced cellular oxidant stress) intended to mitigate the diverse effects of RAGE in different pathologic settings.

Acknowledgments

We gratefully acknowledge the helpful discussions of Dr. Gabriel Godman throughout the course of this work.

This work was supported in part by grants from the Public Health Service (AG00602, HL21006), the American Heart Association (New York affiliate), Council for Tobacco Research, Public Assistance Health Foundation, the Ministry of Education, Science and Culture of Japan, and the Baxter Extramural Grant Program.

References

1. Ruderman, N., J. Williamson, and M. Brownlee. 1992. Glucose and diabetic vascular disease. *FASEB (Fed. Am. Soc. Exp. Biol.) J.* 6:2905–2914.
2. Baynes, J. 1991. Role of oxidative stress in development of complications in diabetes. *Diabetes.* 40:405–412.
3. Sell, D., and V. Monnier. 1989. Structure elucidation of a senescence cross-link from human extracellular matrix: implication of pentoses in the aging process. *J. Biol. Chem.* 264:21597–21602.
4. Brownlee, M., A. Cerami, and H. Vlassara. 1988. Advanced glycosylation end products in tissue and the biochemical basis of diabetic complications. *N. Engl. J. Med.* 318:1315–1320.
5. Bucala, R., Z. Makita, T. Koschinsky, A. Cerami, and H. Vlassara. 1993. Lipid advanced glycosylation: pathway for lipid oxidation in vivo. *Proc. Natl. Acad. Sci. USA.* 90:6434–6438.
6. Hicks, M., L. Delbridge, D. Yue, and R. Reeve. 1988. Catalysis of lipid peroxidation by glucose and glycosylated proteins. *Biochem. Biophys. Res. Commun.* 151:649–655.
7. Hunt, J., C. Smith, and S. Wolff. 1990. Autooxidative glycosylation and possible involvement of peroxides and free radicals in LDL modification by glucose. *Diabetes.* 30:1420–1424.
8. Palinski, W., T. Koschinsky, S.W. Butler, E. Miller, H. Vlassara, A. Cerami, and J.L. Witztum. 1995. Immunological presence of AGEs in atherosclerotic lesions of euglycemic rabbits. *Arterioscler. Thromb. Vasc. Biol.* 15:571–582.
9. Smith, M., S. Taneda, P. Richey, S. Miyata, S.D. Yan, D. Stern, V. Monnier, and G. Perry. 1994. Advanced Maillard reaction end products are associated with Alzheimer disease pathology. *Proc. Natl. Acad. Sci. USA.* 91:5710–5714.

10. Yan, S.D., X. Chen, A.M. Schmidt, J. Brett, G. Godman, C. Scott, C. Caputo, T. Frappier, M. Smith, G. Perry, et al. 1994. The presence of glycated tau in Alzheimer's disease: a mechanism for induction of oxidant stress. *Proc. Natl. Acad. Sci. USA*. 91:7787-7791.
11. Yan, S.D., S.F. Yan, X. Chen, J. Fu, M. Chen, P. Kuppasamy, M.A. Smith, G. Perry, G.C. Godman, P. Nawroth, et al. 1995. Nonenzymatically-glycated tau in Alzheimer's disease induces neuronal oxidant stress resulting in cytokine gene expression and release of amyloid- β peptide. *Nat. Med.* 1:693-699.
12. Miyata, T., R. Inagi, Y. Iida, M. Sato, N. Yamada, O. Oda, K. Maeda, and H. Seo. 1994. Involvement of β_2 -microglobulin modified with advanced glycation end products in the pathogenesis of hemodialysis-associated amyloidosis. *J. Clin. Invest.* 93:521-528.
13. Miyata, T., O. Oda, R. Inagi, Y. Iida, N. Araki, N. Yamada, S. Horiuchi, N. Taniguchi, K. Maeda, and T. Kinoshita. 1992. β_2 -Microglobulin modified with advanced glycation end products is a major component of hemodialysis-associated amyloidosis. *J. Clin. Invest.* 92:1243-1252.
14. Schmidt, A.M., M. Vianna, M. Gerlach, J. Brett, J. Ryan, J. Kao, C. Esposito, H. Hegarty, W. Hurley, M. Clauss, et al. 1992. Isolation and characterization of binding proteins for advanced glycosylation endproducts from lung tissue which are present on the endothelial cell surface. *J. Biol. Chem.* 267:14987-14997.
15. Schmidt, A.M., S.D. Yan, J. Brett, R. Mora, R. Nowygrod, and D. Stern. 1993. Regulation of human mononuclear phagocyte migration by cell surface-binding proteins for advanced glycation end products. *J. Clin. Invest.* 92:2155-2168.
16. Yan, S.D., A.M. Schmidt, G.M. Anderson, J. Zhang, J. Brett, Y.S. Zou, D. Pinsky, and D. Stern. 1994. Enhanced cellular oxidant stress by the interaction of advanced glycation endproducts with their receptors/binding proteins. *J. Biol. Chem.* 269:9889-9897.
17. Schmidt, A.M., O. Hori, J.X. Chen, J.F. Li, J. Crandall, J.H. Zhang, R. Cao, S.D. Yan, J. Brett, and D. Stern. 1995. Advanced glycation end products interacting with their endothelial receptor induce expression of vascular cell adhesion molecule-1 (VCAM-1) in cultured human endothelial cells and in mice. A potential mechanism for the accelerated vasculopathy of diabetes. *J. Clin. Invest.* 96:1395-1403.
18. Schmidt, A.M., M. Haseu, D. Popov, J.H. Zhang, S.D. Yan, J. Brett, R. Cao, K. Kuwabara, G. Costache, N. Simionescu, et al. 1994. The receptor for advanced glycation endproducts (AGEs) has a central role in vessel wall interaction and gene activation in response to AGEs in the intravascular space. *Proc. Natl. Acad. Sci. USA*. 91:8807-8811.
19. Neeper, M., A.M. Schmidt, J. Brett, S.D. Yan, F. Wang, Y.C. Pan, K. El-liston, D. Stern, and A. Shaw. 1992. Cloning and expression of RAGE: a cell surface receptor for advanced glycation endproducts of proteins. *J. Biol. Chem.* 267:14998-15004.
20. Baynes, J.W., and V.M. Monnier. 1989. The Maillard reaction in aging, diabetes and nutrition. *Prog. Clin. Biol. Res.* 304:1-410.
21. Horiuchi, S., N. Araki, and Y. Morino. 1991. Immunochemical approach to characterize advanced glycation endproducts of the Maillard reaction. *J. Biol. Chem.* 266:7329-7332.
22. David, G.S., and R. Reisfeld. 1974. Protein iodination with solid state lactoperoxidase. *Biochemistry*. 13:1014-1020.
23. Klotz, I., and D. Hunston. 1984. Mathematical models for ligand-receptor binding. *J. Biol. Chem.* 258:11442-11445.
24. Sakurai, T., K. Sugioka, and M. Nakano. 1990. O_2^- generation and lipid peroxidation during the oxidation of a glycated polypeptide, glycated polylysine, in the presence of iron-ADP. *Biochim. Biophys. Acta*. 1043:27-33.
25. Yang, Z., Y. Makita, S. Hori, A. Brunelle, A. Cerami, P. Sehajpal, M. Suthanthiran, and H. Vlassara. 1991. Two novel rat liver membrane proteins that bind AGEs. Relationship to macrophage receptor for glucose-modified proteins. *J. Exp. Med.* 174:515-524.
26. Khoury, J., C. Thomas, J. Loike, S. Hickman, L. Cao, and S. Silverstein. 1994. Macrophages adhere to glucose-modified basement membrane via their scavenger receptors. *J. Biol. Chem.* 269:10197-10200.
27. Brett, J., A.M. Schmidt, S.D. Yan, Y.S. Zou, E. Weidman, D. Pinsky, R. Nowygrod, M. Neeper, C. Przysiecki, A. Shaw, et al. 1993. Survey of the distribution of a newly characterized receptor for advanced glycation endproducts in tissues. *Am. J. Pathol.* 143:1699-1712.
28. Wautier, J.-L., C. Zoukourian, O. Chappey, M.-P. Wautier, P.-J. Guillausseau, R. Cao, O. Hori, D. Stern, and A.M. Schmidt. 1996. Receptor-mediated endothelial cell dysfunction in diabetic vasculopathy. Soluble receptor for advanced glycation end products blocks hyperpermeability in diabetic rats. *J. Clin. Invest.* 96:238-243.
29. Ritthaler, U., Y. Deng, Y. Zhang, J. Greten, M. Abel, B. Sido, J. Allenberg, G. Otto, H. Roth, A. Bierhaus, et al. 1995. Expression of receptors for advanced glycation end products in peripheral occlusive vascular disease. *Am. J. Pathol.* 146:688-694.
30. Hori, O., J. Brett, T. Slattery, R. Cao, J. Zhang, J.X. Chen, M. Nagashima, E.R. Lundh, S. Vijay, D. Nitecki, et al. 1995. The receptor for advanced glycation endproducts is a cellular binding site for amphotericin: mediation of neurite outgrowth and co-expression of RAGE and amphotericin in the developing nervous system. *J. Biol. Chem.* 270:25752-25761.
31. Aggeler, J., S.M. Frisch, and Z. Werb. 1984. Changes in cell shape correlate with collagenase gene expression in rabbit synovial fibroblasts. *J. Cell Biol.* 98:1662-1671.
32. Woolley, D.E., E.D. Harris, Jr., C.L. Mainardi, and C.E. Brinckerhoff. 1978. Collagenase immunolocalization in cultures of rheumatoid synovial cells. *Science (Wash. DC)*. 200:773-775.
33. Horowitz, M.C. 1993. Cytokines and estrogen in bone; anti-osteoporotic effects. *Science (Wash. DC)*. 200:626-627.
34. Girasole, G., R.L. Jilka, G. Passeri, S. Boswell, G. Boder, D.C. Williams, and S.C. Manolagas. 1992. β -Estradiol inhibits interleukin-6 production by bone marrow-derived stromal cells and osteoblasts in vitro. Potential mechanism for the antiosteoporotic effect of estrogen. *J. Clin. Invest.* 89:883-891.
35. Lowik, C.W.G.M., G. Van der Pluijm, H. Bloys, K. Hoekman, O.L.M. Bijvoet, L.A. Aarden, and S.E. Papapoulos. 1989. Parathyroid hormone (PTH) and PTH-like protein stimulate IL-6 production by osteogenic cells: a possible role of IL-6 in osteoclastogenesis. *Biochem. Biophys. Res. Commun.* 162:1546-1552.
36. Drueke, T.B. 1991. Beta $_2$ -microglobulin amyloidosis and renal bone disease. *Miner. Electrolyte Metab.* 17:261-272.
37. Koch, K.M. 1992. Dialysis-related amyloidosis. *Kidney Int.* 41:1416-1429.
38. Hynes, R.O. 1992. Integrins: versatility, modulation and signalling in cell adhesion. *Cell*. 69:11-25.