

Epidermal growth factor-stimulated phosphoinositide hydrolysis in cultured rat inner medullary collecting tubule cells. Regulation by G protein, calcium, and protein kinase C.

I Teitelbaum, ... , A Strasheim, T Berl

J Clin Invest. 1990;**85**(4):1044-1050. <https://doi.org/10.1172/JCI114534>.

Research Article

Epidermal growth factor (EGF) exhibits specific saturable binding to cultured rat inner medullary collecting tubule cells and stimulates inositol trisphosphate (IP₃) production by these cells in a dose-dependent fashion. EGF-stimulated IP₃ production is enhanced by GTP gamma s or AIF₄⁻ and is inhibited by GDP beta s or pertussis toxin. Alterations in extracellular Ca²⁺ have no effect on either basal or EGF-stimulated IP₃ production. Similarly, treatment with EGTA which decreases cytosolic Ca²⁺ is without effect. In contrast, treatment with ionomycin which increases cytosolic Ca²⁺ has no effect on basal IP₃ production but enhances the response to EGF. Activation of protein kinase C inhibits IP₃ production in response to either EGF or AIF₄⁻. These studies demonstrate the occurrence of EGF-stimulated phospholipase C activity in the rat inner medullary collecting duct. Stimulation by EGF is transduced by a pertussis toxin-sensitive G protein, unaffected by alterations in extracellular Ca²⁺, insensitive to a decrement in cytosolic Ca²⁺, enhanced by an increase in cytosolic Ca²⁺, and inhibited by protein kinase C.

Find the latest version:

<https://jci.me/114534/pdf>



Epidermal Growth Factor-stimulated Phosphoinositide Hydrolysis in Cultured Rat Inner Medullary Collecting Tubule Cells

Regulation by G Protein, Calcium, and Protein Kinase C

Isaac Teitelbaum, Alexis Strasheim, and Tomas Berl

Department of Medicine, University of Colorado School of Medicine, Denver, Colorado 80262

Abstract

Epidermal growth factor (EGF) exhibits specific saturable binding to cultured rat inner medullary collecting tubule cells and stimulates inositol trisphosphate (IP₃) production by these cells in a dose-dependent fashion. EGF-stimulated IP₃ production is enhanced by GTPγS or AIF₄⁻ and is inhibited by GDPβS or pertussis toxin. Alterations in extracellular Ca²⁺ have no effect on either basal or EGF-stimulated IP₃ production. Similarly, treatment with EGTA which decreases cytosolic Ca²⁺ is without effect. In contrast, treatment with ionomycin which increases cytosolic Ca²⁺ has no effect on basal IP₃ production but enhances the response to EGF. Activation of protein kinase C inhibits IP₃ production in response to either EGF or AIF₄⁻. These studies demonstrate the occurrence of EGF-stimulated phospholipase C activity in the rat inner medullary collecting duct. Stimulation by EGF is transduced by a pertussis toxin-sensitive G protein, unaffected by alterations in extracellular Ca²⁺, insensitive to a decrement in cytosolic Ca²⁺, enhanced by an increase in cytosolic Ca²⁺, and inhibited by protein kinase C. (*J. Clin. Invest.* 1990. 85:1044-1050.) epidermal growth factor • G protein • phospholipase C • protein kinase C • RIMCT cells • calcium

Introduction

Epidermal growth factor (EGF)¹ is a 53 amino acid peptide with potent mitogenic effects on many cell types (1). In addition, it has been demonstrated to exert effects apparently unrelated to its mitogenicity such as inhibition of gastric acid secretion and vasodilatation (2, 3). EGF has been demonstrated to stimulate phospholipase C (PLC) in several cell types, including a hepatocellular carcinoma line (4) and the A431 cell (5), a cell line that overexpresses the EGF receptor.

Studies aimed at assessing the ability of EGF to stimulate PLC in renal tissues have heretofore not been rewarding. EGF fails to stimulate PLC in either renal cortical slices (6) or glomerular mesangial cells (7). Yet it has been shown that EGF,

via activation of protein kinase C, modulates the response to vasopressin in both rabbit cortical collecting tubule (8) and cultured rat inner medullary collecting tubule (RIMCT) cells (9). The present study was therefore undertaken to determine whether EGF is capable of stimulating PLC activity in cultured RIMCT cells and to examine the roles of guanine nucleotides, extra- and intracellular calcium, and protein kinase C in regulating EGF-stimulated phosphoinositide hydrolysis in this tissue.

Methods

Cell culture. RIMCT cells were prepared as previously described (10). However, to ensure that all studies were performed on confluent monolayers of cells, the wells were plated at three times the usual density.

¹²⁵I-EGF binding. ¹²⁵I-EGF (~ 1,000 Ci/mmol) was purchased from ICN Radiochemicals (Irvine, CA). Studies were performed in PBS at 4°C. Confluent monolayers of RIMCT cells were prepared as previously described. At 5 d media was aspirated and the cells were washed three times with ice-cold PBS. Cells were then incubated in ice-cold PBS containing ~ 100,000 disintegrations per minute ¹²⁵I-EGF per well in the absence or presence of varying concentrations (10⁻¹¹–10⁻⁷ M) of unlabeled recombinant human EGF (Boehringer Mannheim Biochemicals, Indianapolis, IN). After 2 h, which had been shown in preliminary studies to be adequate for equilibrium binding, the buffer was aspirated. The cells were then washed four times in ice-cold PBS, solubilized in 1% SDS, and aliquots taken for gamma counting. Binding in the presence of 1 μM unlabeled EGF was considered nonspecific. Data were calculated and plotted using the ENZFITTER program (11).

Incubation with effectors. At 96 h the Ham's F12/Liebavitz L15 medium in which the cells were initially grown was aspirated and the cultures were washed twice with sterile PBS. The cells were then fed with inositol-free Dulbecco's MEM supplemented with [³H]myo-2-inositol (5 μCi/well; Amersham Corp., Arlington Heights, IL). Studies were performed after 24 h of labeling, as this time was demonstrated to be sufficient for incorporation into the phospholipid pool. All studies were performed in PBS with the exception of those using guanine nucleotide analogues. As these studies require cell permeabilization, they were performed in a buffer designed to simulate the intracellular milieu (composition in millimoles: 20 NaCl, 100 KCl, 5 Mg sulfate, 1 NaH₂PO₄, 25 Na bicarbonate, 1 EGTA, pH 7.2) containing saponin (50 μg/ml). Such treatment of the cells does not interfere with their hormonal responsiveness (12).

Media was aspirated from the cells and the cells were washed twice with 500 μl PBS. The cells were then incubated for 15 min in PBS at the desired calcium concentration without or with desired test substances, e.g., aluminum fluoride, ionomycin (Calbiochem-Behring Corp., La Jolla, CA), or phorbol 12-myristate-13-acetate (PMA) (Sigma Chemical Co., St. Louis, MO). In studies using the protein kinase inhibitors (13), 1-(5-isoquinolinesulfonyl)-2-methylpiperazine (H7) or N-(2-[methylamino]ethyl)-5-isoquinoline-sulfonamide (H8) (Calbiochem-Behring Corp.) there is a 5-min preincubation with these compounds alone, followed by a 15-min incubation with these compounds plus any other desired agents.

Address correspondence to Dr. Isaac Teitelbaum, C281, University of Colorado School of Medicine, 4200 E. 9th Ave., Denver, CO 80262.

Received for publication 3 May 1989 and in revised form 17 October 1989.

1. *Abbreviations used in this paper:* EGF, epidermal growth factor; IP₃, inositol trisphosphate; PLC, phospholipase C; RIMCT, rat inner medullary collecting tubule.

J. Clin. Invest.

© The American Society for Clinical Investigation, Inc.

0021-9738/90/04/1044/07 \$2.00

Volume 85, April 1990, 1044–1050

Upon completion of all incubations the buffer was aspirated and replaced with 500 μ l of PBS without or with purified murine EGF (Sigma Chemical Co.) or recombinant human EGF at the desired concentration. After exposure for the desired length of time the reaction was terminated by the addition of 500 μ l of ice-cold 20% TCA. The cells were scraped off of the dish and centrifuged at 1,000 g for 10 min. The supernate containing inositol phosphates was washed four times with an equal volume of ether and stored at -20°C until analysis.

Determination of inositol phosphates. Inositol phosphates were separated by anion exchange chromatography as described by Berridge et al. (14). In brief, the samples were thawed and brought to a pH greater than or equal to 6.0 with 50 mM Tris base. They were then applied to Dowex 1x-8 columns (formate form). Serial elutions are performed with water, 5 mM sodium tetraborate/60 mM sodium formate, 0.1 M formic acid/0.2 M ammonium formate, 0.1 M formic acid/0.4 M ammonium formate, and 0.1 M formic acid/1 M ammonium formate, which elute, respectively, inositol, glyceryl phosphoryl inositol, inositol phosphate, inositol bisphosphate, and inositol trisphosphate (IP_3). The results are expressed as counts per minute of IP_3 per well. When grown to confluence, the protein content of the wells was $100 \pm 3.86 \mu\text{g}$ with interwell variation of $< 11\%$.

Statistical analysis. Each well was considered an n of 1. Comparisons between two treatment groups were by the unpaired t test. Comparisons between three or more treatment groups were done by one-way analysis of variance followed by appropriate contrasts of a priori assumptions (15). In all circumstances $P < 0.05$ was considered significant. Data are presented as mean \pm SEM.

Results

^{125}I -EGF binding. EGF exhibits specific saturable binding to its receptor on RIMCT cells. Fig. 1 depicts the displacement of radiolabeled EGF by increasing concentrations of unlabeled peptide. The calculated K_d is $18.7 \pm 3.8 \text{ nM}$ ($n = 4$).

Effect of EGF on IP_3 formation: dose response and time course. The dose-response curve and time dependence of EGF-stimulated IP_3 formation are depicted in Fig. 2. As seen

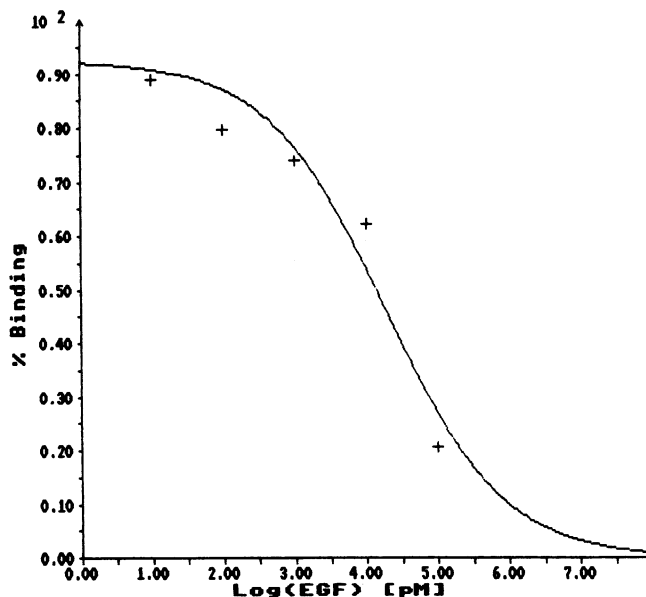


Figure 1. Displacement of ^{125}I -EGF by increasing concentrations of unlabeled recombinant human EGF ($n = 4$). The calculated K_d is $18.7 \pm 3.8 \text{ nM}$.

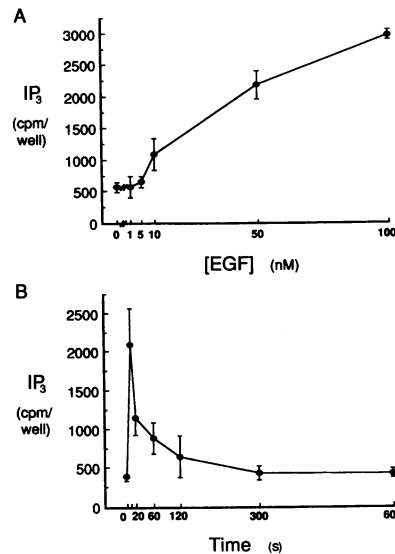


Figure 2. A, Dose-response curve for EGF-stimulated IP_3 production ($n = 3$). Cells were exposed to varying concentrations of EGF for 10 s. IP_3 production is first detected at 10 nM EGF. B, Time course of EGF-stimulated IP_3 production ($n = 3$). Cells were exposed to 100 nM EGF for varying lengths of time. IP_3 production peaks within 10 s and declines rapidly thereafter.

in Fig. 2 A, at 1 and 5 nM EGF inositol phosphate formation is not higher than baseline. A significant increase is first detected at 10 nM EGF and the response increases further at 50 and 100 nM EGF. To assess the purity of the murine EGF used in this study, it was compared with recombinant human EGF; at both 5 nM ($2,523 \pm 135$ vs. $2,573 \pm 585$ cpm/well) and 100 nM ($4,067 \pm 641$ vs. $3,740 \pm 761$ cpm/well) the response was similar. As seen in Fig. 2 B, EGF-stimulated IP_3 formation was very rapid, increasing three- to fivefold within the first 10 s and gradually decreasing to baseline over the ensuing 2–5 min. Therefore, all subsequent studies were performed using murine EGF at a concentration of 100 nM with a 10-s exposure.

As EGF stimulates phospholipase A_2 in RIMCT cells (12) and arachidonic acid metabolites may themselves stimulate PLC (16, 17), care was taken to ensure that EGF-stimulated phosphatidylinositol 4,5-bisphosphate hydrolysis was not mediated via increased PGE_2 . Over the range of 10^{-11} – 10^{-5} M , PGE_2 did not stimulate IP_3 production in RIMCT cells ($1,077 \pm 290$ cpm/well, 10^{-5} M PGE_2 vs. $1,084 \pm 227$, basal, $n = 6$, NS). Also, the cyclooxygenase inhibitor flurbiprofen (5 μM ; Sigma Chemical Co.) which inhibits ionomycin-stimulated PGE_2 production by $\sim 95\%$ (64.87 ± 12.69 vs. 3.98 ± 1.79 pg/ μg protein, $n = 5$, $P < .01$) has no effect on EGF-stimulated IP_3 production ($5,615 \pm 645$ vs. $4,505 \pm 610$ cpm/well, $n = 5$, NS). Therefore, EGF stimulates phosphoinositide hydrolysis directly, not via an arachidonic acid metabolite.

Studies on the role of a guanine nucleotide-binding protein (G protein). The activity of G proteins is, by definition, subject to modulation by guanine nucleotide analogues. The activity of G proteins is enhanced by the GTP analogue, GTP γ S, and is inhibited by the GDP analogue GDP β S (18). To assess whether the formation of IP_3 is modulated by a G protein, these analogues were used. As shown in Fig. 3, neither of these compounds affects basal IP_3 levels. However, exposure to 10 μM GTP γ S results in marked enhancement of EGF-stimulated IP_3 production from $1,667 \pm 116$ to $3,156 \pm 528$ cpm per well ($P < .05$); conversely, exposure to GDP β S completely prevents EGF stimulation of IP_3 production, as the IP_3 level is 451 ± 16 , which is similar to the control value of 495 ± 35 , $P = \text{NS}$.

Aluminum fluoride has been shown to mimic the activity of GTP γ S in several cell systems (19, 20). It has the additional

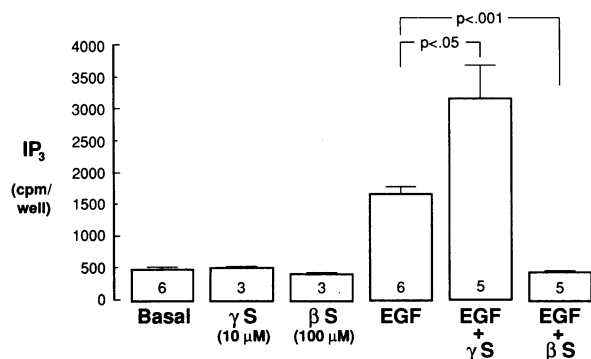


Figure 3. Effect of guanine nucleotides on basal and EGF-stimulated IP₃ production in saponin-permeabilized cells. γ S = 10 μ M GTPs; β S = 100 μ M GDP β s. The number at the base of each bar is the *n* for that setting. Basal IP₃ levels are not affected by guanine nucleotides. EGF-stimulated IP₃ production is enhanced by γ S and inhibited by β S.

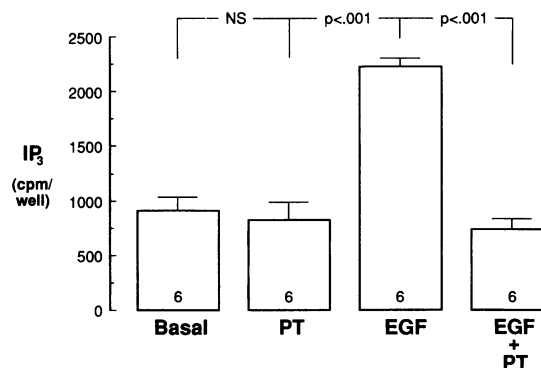


Figure 4. Effect of treatment with pertussis toxin (PT; 100 ng/ml for 16 h) on basal and EGF-stimulated IP₃ production (*n* = 6). PT has no effect on basal IP₃ levels but eliminates stimulation by EGF.

advantage of permeating the cell and can therefore be used in intact cells. As shown in Table I, a 15-min exposure to aluminum fluoride results in significant enhancement of both basal and EGF-stimulated IP₃ formation.

Having established that a G protein is involved in the transduction of EGF receptor-stimulated PLC activity, we sought to determine whether this G protein is pertussis toxin sensitive. We examined the ability of EGF to stimulate IP₃ formation in cells that had been treated overnight with pertussis toxin (100 ng/ml), which fully ADP-ribosylates susceptible G proteins (12). While pertussis toxin has no effect on basal IP₃ formation as shown in Fig. 4, it mimics the effect of GDP β s to eliminate stimulation by EGF.

Studies on the role of Ca²⁺. Studies were performed to examine the potential effects of alterations in both extracellular and intracellular Ca²⁺ on EGF-stimulated PLC activity. The Ca²⁺ concentration of the PBS routinely used in generating inositol phosphate samples is 0.6 μ M. To determine whether an elevation in extracellular Ca²⁺ could alter the effect of EGF, the concentration of the cation was elevated to 1 or 2 mM. As shown in Fig. 5, EGF-stimulated IP₃ production is unaffected by increasing the extracellular Ca²⁺ concentration to either a physiologic level of 1 mM or to a supraphysiologic level of 2 mM. Since this insensitivity to extracellular Ca²⁺ by no means precludes a sensitivity to alterations in cellular Ca²⁺, we next assessed the effect of alterations in intracellular Ca²⁺. Cytosolic Ca²⁺ was decreased by a 15-min exposure to 0.6 μ M extracellular Ca²⁺ in the presence of 1 mM EGTA (10). To increase cytosolic Ca²⁺ we exposed cells for 15 min to an extracellular Ca²⁺ concentration of 1 mM in conjunction with 100 nM ionomycin. Neither of these maneuvers alone altered basal IP₃ production, as IP₃ levels were 854 \pm 112 cpm/well control, 655 \pm 74 (*n* = 4, NS) in the presence of EGTA, and

948 \pm 158 (*n* = 6, NS) in the presence of 1 mM Ca²⁺ + ionomycin. As shown in Fig. 6, decreasing cytosolic Ca²⁺ with EGTA has no effect on EGF-stimulated IP₃ production. However, increasing cytosolic Ca²⁺ by exposure to 1 mM extracellular Ca²⁺ in the presence of 100 nM ionomycin does result in significant potentiation of EGF-stimulated IP₃ production (1,672 \pm 110 vs. 3,389 \pm 529, *n* = 5, *P* < 0.05); this potentiation by ionomycin of the response to EGF is dependent on the entry of calcium from the extracellular compartment as it is not observed when ionomycin is used in the virtual absence of extracellular Ca²⁺ (Fig. 6).

Studies on the role of protein kinase C. Several studies have suggested a role for protein kinase C to modulate the activity of PLC (21–24). To determine whether activation of protein kinase C is involved in the regulation of EGF-stimulated PLC activity in the inner medullary collecting duct, we assessed IP₃ production in the absence and presence of the phorbol ester, PMA (1 μ M). As seen in Fig. 7, a 15-min preincubation with PMA completely eliminates subsequent EGF-stimulated IP₃ production; the structurally similar compound 4- α phorbol, which does not activate protein kinase C, has no effect on EGF-stimulated IP₃ production. PMA similarly inhibits AIF₄-stimulated IP₃ production (6,522 \pm 525 vs. 894 \pm 297 cpm/well, *n* = 5, *P* < 0.001), suggesting a postreceptor site of inhibition.

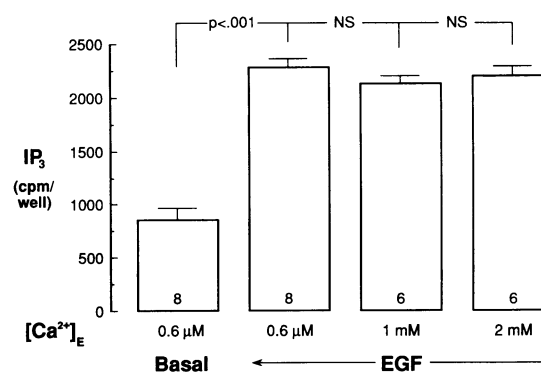


Figure 5. Effect of alterations in extracellular Ca²⁺ ([Ca²⁺]_E) on EGF-stimulated IP₃ production. The number at the base of each bar is the *n* for that setting. EGF-stimulated IP₃ production is constant at [Ca²⁺]_E ranging from 0.6 μ M to 2 mM.

Table I. Effect of AIF₄ (25 mM NaF + 10 μ M AlCl₃) on Basal and EGF-stimulated IP₃ Production

	Control	+AIF ₄	<i>P</i> value
Basal (<i>n</i> = 9)	690 \pm 99	1,805 \pm 187	<0.001
EGF (<i>n</i> = 5)	1,467 \pm 62	2,677 \pm 368	<0.01

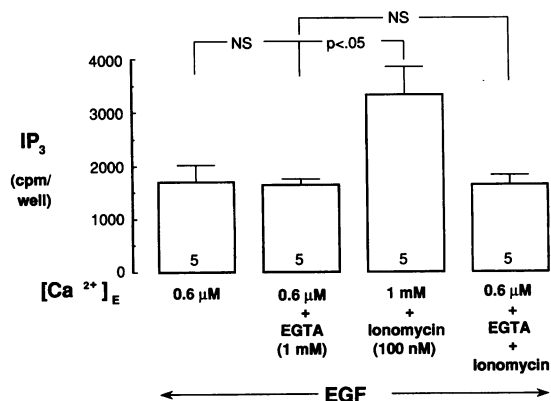


Figure 6. Effect of alterations in cytosolic Ca^{2+} on EGF-stimulated IP_3 production ($n = 5$). Decreasing cytosolic Ca^{2+} has no effect but increasing it potentiates the response to EGF.

To further establish a role for protein kinase C in the modulation of EGF-stimulated PLC activity, we examined the ability of relatively selective protein kinase inhibitors to prevent PMA-induced inhibition of EGF-stimulated IP_3 production. H7 is a relatively specific inhibitor of protein kinase C; H8 is a relatively specific inhibitor of cyclic nucleotide-dependent protein kinases (13). As seen in Fig. 8, treatment with H7 for 20 min before exposure to EGF has no effect on EGF-stimulated IP_3 production; yet, exposure to H7 for 5 min before and during the incubation with PMA completely prevents PMA-induced inhibition of the EGF signal. In contrast, exposure to H8, which also has no effect by itself, does not prevent subsequent inhibition by PMA.

Discussion

EGF is known to stimulate phosphoinositide hydrolysis in several tissues (4, 5). However, studies in renal tissues have failed to detect EGF-stimulated PLC activity in either glomerular mesangial cells (7) or rat cortical slices (6). While EGF has been reported to inhibit arginine vasopressin-stimulated water transport in the rabbit cortical collecting duct by activation of

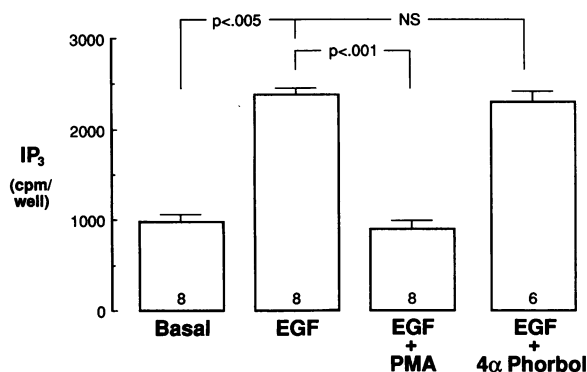


Figure 7. Effect of phorbol esters on EGF-stimulated IP_3 production. The number at the base of each bar is the n for that setting. PMA (1 μ M) activates protein kinase C and inhibits IP_3 production; 4- α phorbol (1 μ M), a structurally similar compound that does not activate protein kinase C, has no effect.

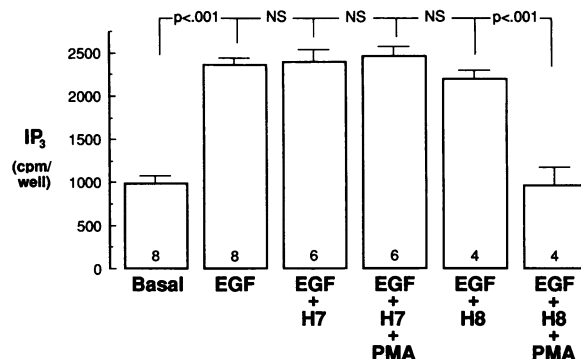


Figure 8. Effect of protein kinase inhibitors to prevent PMA inhibition of IP_3 production. The number at the base of each bar is the n for that setting. 1-(5-Isoquinolinesulfonyl)-2-methylpiperazine (H7) and *N*-(2-[methylamino]ethyl)-5-isoquinoline-sulfonamide (H8) are both used at 50 μ M. Inhibition by PMA is prevented by H7 but not by H8.

protein kinase C (8), the ability of EGF to promote phosphoinositide hydrolysis in the collecting duct has not been directly examined. The studies described herein are the first to clearly demonstrate EGF-stimulated phosphoinositide hydrolysis in cultured RIMCT cells.

An IP_3 signal is first detectable at an EGF concentration of 10 nM and increases thereafter. The dose response is the same whether purified murine or recombinant human EGF is used. As seen in Fig. 1, maximal displacement of ^{125}I -EGF from its receptor requires ~ 100 nM unlabeled EGF. The calculated K_d of 18.7 nM is similar to that of the low affinity binding site reported in several tissues (25–27), including a preliminary report in the rat renal papillary collecting duct (28). The further increase in IP_3 production at concentrations of EGF significantly higher than the K_d may reflect the fact that equilibrium binding is not achieved during the very short exposure time (10 s) used in this study. The time course of EGF-stimulated IP_3 production (Fig. 2 B) is extremely rapid, with IP_3 production peaking within 10 s and falling swiftly thereafter, returning to a level indistinguishable from baseline at 2 min.

Recent studies from this laboratory have demonstrated that EGF-stimulated phospholipase A_2 activity is transduced by a guanine nucleotide-binding regulatory (G) protein (12). The present experiments reveal that a G protein is also involved in the transduction of receptor-stimulated phospholipase C activity. This is demonstrated by the observation that EGF-stimulated PLC activity in RIMCT cells is enhanced by $GTP\gamma S$ (Fig. 3) or AlF_4^- (Table I) and is inhibited by $GDP\beta S$ (Fig. 3). It should be noted that while $GTP\gamma S$ has no effect on basal IP_3 production, AlF_4^- does. This probably reflects the fact that fluoroaluminates are capable of complexing with the GDP bound form of G proteins, whereas binding of $GTP\gamma S$ requires release of the previously bound GDP; this release occurs only upon receptor activation (29). While there is precedent for a role for G proteins in EGF receptor-stimulated PLC activity in other cell types, this is the first such demonstration in renal epithelial cells.

The G protein that transduces stimulation of PLC has been shown to serve as a substrate for pertussis toxin-catalyzed ADP-ribosylation in many (30, 31) but not all (32, 33) systems. In contrast to EGF-stimulated PLC activity in the A431 cell line, which is not inhibited by pertussis toxin (34), the G

protein described herein is pertussis toxin sensitive (Fig. 4). As pertussis toxin ADP-ribosylates only a single 41-kD protein in plasma membranes prepared from RIMCT cells (12), the $G\alpha$ subunit responsible for transducing EGF-stimulated phosphoinositide hydrolysis is presumed to be an α_i similar (or identical) to those previously described (18).

Although PLC is generally recognized as a Ca^{2+} -stimulatable enzyme (35), it exhibits a broad range of Ca^{2+} sensitivities in varying tissues. The role of Ca^{2+} in PLC activity in renal cells has not been previously investigated. In cultured RIMCT cells both basal and EGF-stimulated PLC activity are insensitive to alterations in extracellular Ca^{2+} ranging from 600 nM to 2 mM (Fig. 5). Similarly, chelation of extracellular Ca^{2+} with a resulting fall in cytosolic Ca^{2+} (10) has no effect on either basal or EGF-stimulated IP_3 levels. In fact, stimulation of IP_3 production by EGF in saponin-permeabilized cells (Fig. 3) when ambient Ca^{2+} is only 10 nM (12) suggests that PLC has no absolute requirement for Ca^{2+} . The occurrence of significant phosphoinositide hydrolysis in the presence of exceedingly low Ca^{2+} suggests that renal inner medullary PLC resembles the type I form of brain and liver (36). Increasing cytosolic Ca^{2+} by exposure to ionomycin has no effect on basal IP_3 levels but potentiates the response to EGF. This contrasts with the observations of Wahl et al. (5) in A431 cells in which A23187 inhibited the response to EGF. However our results are in concert with most studies that have demonstrated Ca^{2+} sensitivity of PLC (35, 37–39). Ionophores have cellular effects other than increasing cell Ca^{2+} , such as alterations in cell pH. The failure to observe potentiation of the EGF effect by ionomycin in the absence of extracellular Ca^{2+} strongly suggests that the observed effect of the ionophore is in fact due to its Ca^{2+} mobilizing action.

Activation of protein kinase C has been shown to provide negative feedback control to inhibit further receptor-stimulated phosphoinositide hydrolysis in many (40–43), but not all, tissues (44). A potential role for protein kinase C in the regulation of PLC has not been investigated in renal epithelial cells. In RIMCT cells, exposure to the protein kinase C-stimulating phorbol ester, PMA, but not the inactive analogue, 4- α phorbol, inhibits EGF-stimulated IP_3 production. This inhibition is prevented by pretreatment with the relatively specific C-kinase inhibitor, H7, but not by H8, which is more specific for cyclic nucleotide-dependent kinases.

The manner in which activation of protein kinase C decreases EGF-stimulated IP_3 accumulation in RIMCT cells is not known. Possible mechanisms include: phosphorylation of the EGF receptor which, in other systems, has been shown to decrease both the ligand binding and tyrosine kinase activity of the receptor (45); phosphorylation of the G protein involved in transduction of the signal (46, 47); or phosphorylation of PLC itself (48). The observation that activation of protein kinase C also inhibits AIF $_4$ -stimulated phosphoinositide hydrolysis argues strongly for a postreceptor site of inhibition. Alternatively, IP_3 accumulation could decrease due to phosphorylation of IP_3 5'-phosphomonoesterase which has been shown to increase the activity of the phosphatase (49), thereby accelerating degradation of IP_3 . The observation that inositol monophosphate and inositol bisphosphate are both slightly decreased after exposure to PMA (data not shown) argues against the latter possibility.

The mRNA for prepro EGF is found in abundance in the thick ascending limb and early distal convoluted tubule of the

murine kidney (50). Immunocytochemical studies have localized EGF to the apical membrane of these nephron segments (51). The stimulus to secretion or release of EGF and the manner in which it is presented to more distal segments of the nephron (i.e., luminal or peritubular membrane) are unknown. It is noteworthy, however, that specific EGF binding has recently been demonstrated in the rabbit cortical collecting duct (8) and has been reported in preliminary fashion in the rabbit outer medullary (52) and cultured rat inner medullary collecting ducts as well (28). Binding of EGF to its receptor has been reported to inhibit the hydroosmotic response to AVP in the rabbit cortical collecting duct at a post-cAMP site (8). Inhibition of protein kinase C eliminated the effect of EGF, but the ability of EGF to promote phosphoinositide hydrolysis and thereby stimulate protein kinase C was not assessed. Apart from a post-cAMP site of inhibition, studies from this laboratory have demonstrated that EGF, via stimulation of protein kinase C, eliminates AVP-stimulated cAMP generation in the cultured rat inner medullary collecting duct (9). It is apparent, therefore, that EGF-stimulated phosphoinositide hydrolysis plays an important role in the modulation of the hydroosmotic response to vasopressin. This study is the first to describe some of the factors involved in regulating this important signal transduction process.

In summary, EGF-stimulated PLC activity is transduced by a pertussis toxin-sensitive G protein. Stimulation of PLC by EGF does not require and is insensitive to alterations in extracellular Ca^{2+} . While decreasing cytosolic Ca^{2+} is without effect, increasing intracellular Ca^{2+} markedly enhances the response to EGF. EGF-stimulated PLC activity is inhibited upon activation of protein kinase C. The mechanism of this inhibition will require further investigation.

Acknowledgments

The authors would like to thank Ms. Linda M. Benson for expert secretarial assistance.

This work was supported by National Institutes of Health grants DK-38464 and PPG DK-19928.

References

1. Carpenter, G., and S. Cohen. 1979. Epidermal growth factor. *Annu. Rev. Biochem.* 48:193–216.
2. Gregory, H. 1975. Isolation and structure of urogastrone and its relationship to epidermal growth factor. *Nature (Lond.)* 257:325–327.
3. Gan, B. S., K. L. McCannell, and M. D. Hollenberg. 1987. Epidermal growth factor-urogastrone causes vasodilatation in the anesthetized dog. *J. Clin. Invest.* 80:199–206.
4. Gilligan, A., M. Prentki, M. C. Glennon, and B. B. Knowles. 1988. Epidermal growth factor-induced increases in inositol trisphosphates, inositol tetrakisphosphates, and cytosolic Ca^{2+} in a human hepatocellular carcinoma-derived cell line. *FEBS (Fed. Eur. Biochem. Soc.) Lett.* 233:41–46.
5. Wahl, M., and G. Carpenter. 1988. Regulation of epidermal growth factor-stimulated formation of inositol phosphates in A-431 cells by calcium and protein kinase C. *J. Biol. Chem.* 263:7581–7590.
6. Gatalica, Z., and H. Banfic. 1988. Epidermal growth factor stimulates the incorporation of phosphate into phosphatidic acid and phosphoinositides but does not affect phosphoinositide breakdown by phospholipase C in renal cortical slices. *Biochim. Biophys. Acta.* 968:379–384.
7. Margolis, B. L., B. J. Holub, D. A. Troyer, and K. L. Skorecki. 1988. Epidermal growth factor stimulates phospholipase A_2 in vaso-

pressin treated rat glomerular mesangial cells. *Biochem. J.* 256:469–474.

8. Breyer, M. D., H. R. Jacobson, and J. A. Breyer. 1988. Epidermal growth factor inhibits the hydroosmotic effect of vasopressin in the isolated perfused rabbit cortical collecting tubule. *J. Clin. Invest.* 82:1313–1320.

9. Teitelbaum, I. 1989. cAMP and DAG: mutually inhibitory second messengers in rat inner medullary collecting tubule cells. *Clin. Res.* 37:503A. (Abstr.)

10. Teitelbaum, I., and T. Berl. 1986. Effects of calcium on vasopressin-mediated cyclic adenosine monophosphate formation in cultured rat inner medullary collecting tubule cells. *J. Clin. Invest.* 77:1574–1583.

11. Leatherbarrow, R. J. 1987. ENZFITTER: A Non-linear Regression Data Analysis Program for IBM PC. Elsevier Scientific Publishers, BV Amsterdam.

12. Teitelbaum, I. 1990. The epidermal growth factor receptor is coupled to a phospholipase A₂-specific pertussis toxin-inhibitable guanine nucleotide-binding regulatory protein in cultured rat inner medullary collecting tubule cells. *J. Biol. Chem.* In press.

13. Hidaka, H., M. Inagaki, S. Kawamoto, and Y. Sasaki. 1984. Isoquinolinesulfonamides, novel and potent inhibitors of cyclic nucleotide dependent protein kinase and protein kinase C. *Biochemistry.* 23:5036–5041.

14. Berridge, M. J., R. M. C. Dawson, C. P. Downes, J. P. Heslop, and R. F. Irvine. 1983. Changes in the levels of inositol phosphates after agonist-dependent hydrolysis of membrane phosphoinositides. *Biochem. J.* 212:473–482.

15. 1980. Statistical Methods. G. W. Snedecor and W. G. Cochran, editors. 7th ed. Iowa State University Press, Ames, IA. 224–226.

16. Mené, P., G. R. Dubyak, H. E. Abboud, A. Scarpa, and M. J. Dunn. 1988. Phospholipase C activation by prostaglandins and thromboxane A₂ in cultured mesangial cells. *Am. J. Physiol.* 255:F1059–F1069.

17. Yokohama, H., T. Tanaka, S. Ito, M. Negish, H. Hayashi, and O. Hayaishi. 1988. Prostaglandin E receptor enhancement of catecholamine release may be mediated by phosphoinositide metabolism in bovine adrenal chromaffin cells. *J. Biol. Chem.* 263:1119–1122.

18. Gilman, A. G. 1987. G proteins: transducers of receptor-generated signals. *Annu. Rev. Biochem.* 56:615–649.

19. Cockcroft, S., and J. A. Taylor. 1987. Fluoroaluminates mimic guanosine 5'-[γ-thio]triphosphate in activating the polyphosphoinositide phosphodiesterase of hepatocyte membranes. *Biochem. J.* 241:409–414.

20. Sternweis, P. C., and A. G. Gilman. 1982. Aluminum: a requirement for activation of the regulatory component of adenylate cyclase by fluoride. *Proc. Natl. Acad. Sci. USA.* 79:4888–4891.

21. Osugi, T., T. Imaizumi, A. Mizushima, S. Uchida, and H. Yoshida. 1987. Phorbol ester inhibits bradykinin-stimulated inositol trisphosphate formation and calcium mobilization in neuroblastoma × glioma hybrid NG 108-15 cells. *J. Pharmacol. Exp. Ther.* 240:617–622.

22. Pfeilschifter, J. 1986. Tumour promotor 12-0-tetradecanoyl-phorbol 13-acetate inhibits angiotensin II-induced inositol phosphate production and cytosolic Ca²⁺ rise in rat renal mesangial cells. *FEBS (Fed. Eur. Biochem. Soc.) Lett.* 203:262–266.

23. Berta, P., S. Phaneuf, P. Travo, and J.-C. Cavadore. 1988. Modulation of the accumulation of inositol phosphates and the mobilization of calcium in aortic myocytes. *Eur. J. Pharmacol.* 153:123–129.

24. Portilla, D., M. Mordhorst, W. Bertrand, and A. R. Morrison. 1988. Protein kinase C modulates phospholipase C and increases arachidonic acid release in bradykinin stimulated MDCK cells. *Biochem. Biophys. Res. Commun.* 153:454–462.

25. Nicholson, S., J. R. C. Sainsbury, G. K. Needham, P. Chambers, J. R. Farndon, and A. L. Harris. 1988. Quantitative assays of epidermal growth factor receptor in human breast cancer: cut-off points of clinical relevance. *Int. J. Cancer* 42:36–41.

26. Sunahara, G. I., K. G. Nelson, T. K. Wong, and G. W. Lucier. 1987. Decreased human birth weights after in utero exposure to PCBs and PCDFs are associated with decreased placental EGF-stimulated receptor autophosphorylation capacity. *Am. Soc. Pharmacol. Exp. Ther.* 32:572–578.

27. van Bergen en Henegouwen, P. M. P., L. H. K. Defize, J. de Kroon, H. van Damme, A. J. Verkleij, and J. Boonstra. 1989. Ligand-induced association of epidermal growth factor receptor to the cytoskeleton of A431 cells. *J. Cell. Biochem.* 39:455–465.

28. Harris, R. C., and J. Breyer. 1989. Rat renal papillary collecting duct cells possess specific epidermal growth factor receptors. *10th Int. Congr. Nephrol.* Alden Press, Oxford. 261. (Abstr.)

29. Bigay, J., P. Deterre, C. Pfister, and M. Chabre. 1985. Fluoroaluminates activate transducin-GDP by mimicking the γ-phosphate of GTP in its binding site. *FEBS (Fed. Eur. Biochem. Soc.) Lett.* 191:181–185.

30. Litosch, I., and J. N. Fain. 1986. Regulation of phosphoinositide breakdown by guanine nucleotides. *Life Sci.* 39:187–194.

31. Smith, C. D., B. C. Lane, I. Kusaka, M. W. Verghese, and R. Snyderman. 1985. Chemoattractant receptor-induced hydrolysis of phosphatidylinositol 4,5-bisphosphate in human polymorphonuclear leukocyte membranes. *J. Biol. Chem.* 260:5875–5878.

32. Masters, S. B., M. W. Martin, T. K. Harden, and J. H. Brown. 1985. Pertussis toxin does not inhibit muscarinic-receptor-mediated phosphoinositide hydrolysis or calcium mobilization. *Biochem. J.* 227:933–937.

33. Uhing, R. J., V. Prpic, H. Jiang, and J. H. Exton. 1986. Hormone-stimulated polyphosphoinositide breakdown in rat liver plasma membranes. *J. Biol. Chem.* 261:2140–2146.

34. Tilly, B. C., P. A. Van Paridon, I. Verlaan, S. W. De Laat, and W. H. Moolenaar. 1988. Epidermal-growth-factor-induced formation of inositol phosphates in human A431 cells. *Biochem. J.* 252:857–863.

35. Abdel-Latif, A. A. 1986. Calcium-mobilizing receptors, polyphosphoinositides, and the generation of second messengers. *Pharmacol. Rev.* 38:227–272.

36. Nakanishi, H., H. Nomura, U. Kikkawa, A. Kishimoto, and Y. Nishizuka. 1985. Rat brain and liver soluble phospholipase C: resolution of two forms with different requirements for calcium. *Biochem. Biophys. Res. Commun.* 132:582–590.

37. Downes, C. P., and R. H. Michell. 1982. The control by Ca²⁺ of the polyphosphoinositide phosphodiesterase and the Ca²⁺-pump ATPase in human erythrocytes. *Biochem. J.* 202:53–58.

38. Melin, P.-M., R. Sundler, and B. Jergil. 1986. Phospholipase C in rat liver plasma membranes. *FEBS (Fed. Eur. Biochem. Soc.) Lett.* 198:85–88.

39. Bradford, P. G., and R. P. Rubin. 1986. Guanine nucleotide regulation of phospholipase C activity in permeabilized rabbit neutrophils. *Biochem. J.* 239:97–102.

40. Cooper, R. H., K. E. Coll, and J. R. Williamson. 1985. Differential effects of phorbol ester on phenylephrine and vasopressin-induced Ca²⁺ mobilization in isolated hepatocytes. *J. Biol. Chem.* 260:3281–3288.

41. Brock, T. A., S. E. Rittenhouse, C. W. Powers, L. S. Ekstein, M. A. Gimbrone, Jr., and R. W. Alexander. 1985. Phorbol ester and 1-oleoyl-2-acetyl-glycerol inhibit angiotensin activation of phospholipase C in cultured vascular smooth muscle cells. *J. Biol. Chem.* 260:14158–14162.

42. Orellana, S., P. A. Solski, and J. H. Brown. 1987. Guanosine 5'-0-(thiotriphosphate)-dependent inositol trisphosphate formation in membranes is inhibited by phorbol ester and protein kinase C. *J. Biol. Chem.* 262:1638–1643.

43. Smith, C. D., R. J. Uhing, and R. Snyderman. 1987. Nucleotide regulatory protein-mediated activation of phospholipase C in human polymorphonuclear leukocytes is disrupted by phorbol esters. *J. Biol. Chem.* 262:6121–6127.

44. Watson, S. P., J. McNally, L. J. Shipman, and P. P. Godfrey. 1988. The action of the protein kinase C inhibitor, staurosporine, on human platelets. *Biochem. J.* 249:345–350.

45. Kaji, H., J. E. Casnellie, and P. M. Hinkle. 1988. Thyrotropin releasing hormone action in pituitary cells. *J. Biol. Chem.* 263:13588–13593.
46. Zick, Y., R. Sagi-Eisenberg, M. Pines, P. Gierschik, and A. M. Spiegel. 1986. Multisite phosphorylation of the α subunit of transducin by the insulin receptor kinase and protein kinase C. *Proc. Natl. Acad. Sci. USA.* 83:9294–9297.
47. Crouch, M. F., and E. G. Lapetina. 1988. A role for G_i in control of thrombin receptor-phospholipase C coupling in human platelets. *J. Biol. Chem.* 263:3363–3371.
48. Bennett, C. F., and S. T. Crooke. 1987. Purification and characterization of a phosphoinositide-specific phospholipase C from guinea pig uterus. *J. Biol. Chem.* 262:13789–13797.
49. Connolly, T. M., W. J. Lawing, Jr., and P. W. Majerus. 1986. Protein kinase C phosphorylates human platelet inositol trisphosphate 5'-phosphomonoesterase, increasing the phosphatase activity. *Cell.* 46:951–958.
50. Crawford, R. J., J. D. Penschow, H. D. Niall, and J. P. Coghlan. 1985. Mouse prepro-epidermal growth factor synthesis by the kidney and other tissues. *Nature (Lond.)* 313:228–231.
51. Salido, E. C., D. A. Fisher, and L. Barajas. 1987. Immunoelectron microscopy of epidermal growth factor in mouse kidney. *J. Ultrastruct. Mol. Struct. Res.* 96:105–113.
52. Redha, R., C. Lopez, J. A. Breyer, H. R. Jacobson, and M. D. Breyer. 1989. Mapping of 125-I epidermal growth factor binding sites along the rabbit nephron. *Kidney Int.* 35:319. (Abstr.)