

Structural basis of von Willebrand factor binding to platelet glycoprotein Ib and collagen. Effects of disulfide reduction and limited proteolysis of polymeric von Willebrand factor.

P Bockenstedt, ... , J M Greenberg, R I Handin

J Clin Invest. 1986;77(3):743-749. <https://doi.org/10.1172/JCI112369>.

Research Article

von Willebrand factor (vWF) is a large, multimeric glycoprotein that helps platelets adhere to vascular subendothelium. Although vWF binding to platelet receptors and connective tissue constituents is of fundamental importance in adhesion, there is little information regarding the nature of these vWF binding sites. In this paper, we have compared the structural requirements for vWF binding with platelet glycoprotein Ib (Gplb), heparin, and collagen and have shown that fragments derived from large vWF multimers retain biologic activity. We have shown that a 440,000-D subunit produced by disulfide reduction and alkylation of vWF polymer binds to platelet Gplb. When analyzed by polyacrylamide gel electrophoresis and Sepharose CL6B chromatography, the 440,000-D vWF oligomer is a dimer of the 220,000 subunit of fully reduced native vWF. This vWF dimer competes with 125I-vWF for binding to Gplb with an IC₅₀ of 100 micrograms/ml (227 nM). The Gplb binding domain on vWF was further localized by digestion of native vWF polymers with Staphylococcal V8 protease. A 285,000-D fragment of vWF multimer was separated from heterogeneous 210,000-225,000-D fragments by its ability to bind to heparin. The 285,000-D fragment that bound to heparin Sepharose was composed of two disulfide-linked 175,000- and 115,000-D polypeptides. The heterogeneous fragments contained disulfide-linked 96,000, 66,000, and 53,000-D polypeptides when analyzed on polyacrylamide gel electrophoresis. The 285,000-D fragment competed with 125I-vWF for binding [...]

Find the latest version:

<https://jci.me/112369/pdf>



Structural Basis of von Willebrand Factor Binding to Platelet Glycoprotein Ib and Collagen

Effects of Disulfide Reduction and Limited Proteolysis of Polymeric von Willebrand Factor

Paula Bockenstedt, Joshua M. Greenberg, and Robert I. Handin

Hemostasis Unit, Hematology Division, Brigham and Women's Hospital and the Department of Medicine, Brigham and Women's Hospital and Harvard Medical School, Boston, Massachusetts 02115

Abstract

von Willebrand factor (vWF) is a large, multimeric glycoprotein that helps platelets adhere to vascular subendothelium. Although vWF binding to platelet receptors and connective tissue constituents is of fundamental importance in adhesion, there is little information regarding the nature of these vWF binding sites. In this paper, we have compared the structural requirements for vWF binding with platelet glycoprotein Ib (GpIb), heparin, and collagen and have shown that fragments derived from large vWF multimers retain biologic activity. We have shown that a 440,000-D subunit produced by disulfide reduction and alkylation of vWF polymer binds to platelet GpIb. When analyzed by polyacrylamide gel electrophoresis and Sepharose CL6B chromatography, the 440,000-D vWF oligomer is a dimer of the 220,000 subunit of fully reduced native vWF. This vWF dimer competes with ^{125}I -vWF for binding to GpIb with an IC_{50} of 100 $\mu\text{g}/\text{ml}$ (227 nM).

The GpIb binding domain on vWF was further localized by digestion of native vWF polymers with Staphylococcal V8 protease. A 285,000-D fragment of vWF multimer was separated from heterogeneous 210,000–225,000-D fragments by its ability to bind to heparin. The 285,000-D fragment that bound to heparin Sepharose was composed of two disulfide-linked 175,000- and 115,000-D polypeptides. The heterogeneous fragments contained disulfide-linked 96,000, 66,000, and 53,000-D polypeptides when analyzed on polyacrylamide gel electrophoresis. The 285,000-D fragment competed with ^{125}I -vWF for binding to GpIb with an IC_{50} of 22 $\mu\text{g}/\text{ml}$ (77 nM), while the other fragments did not compete for binding. Neither the vWF dimer nor the proteolytic fragments competed with native ^{125}I -vWF polymer for binding to collagen.

Introduction

The von Willebrand factor (vWF)¹ is a heterogeneous multimeric plasma protein that facilitates adhesion of platelets to injured

Address reprint requests to Dr. Handin, Hematology Division, Brigham and Women's Hospital, 75 Francis St., Boston, MA 02115.

Received for publication 26 June 1985 and in revised form 25 November 1985.

1. *Abbreviations used in this paper:* GpIb, glycoprotein Ib; IC_{50} , concentration that inhibits binding by 50%; PEG, polyethylene glycol; PMSF, phenylmethylsulfonyl fluoride; SDS-PAGE, sodium dodecyl sulfate polyacrylamide gel electrophoresis; TBS, 0.05 M Tris, 0.15 M NaCl, 0.02% azide, pH 7.4; vWF, von Willebrand factor; vWF_d, von Willebrand factor dimer.

vessel wall (1–3). Although the mechanism by which vWF promotes adhesion has not been fully delineated, there is evidence that vWF links platelets to the vessel wall by binding to platelet glycoprotein Ib (GpIb), as well as to exposed subendothelial collagen (4–9). In previous studies, we, and others, have demonstrated vWF binding to GpIb and competition for binding by a soluble proteolytic fragment of GpIb, glycofascin (10, 11). In addition, there are several reports of vWF binding to fibrillar collagen (7–9, 12–14), and we have recently reported the binding and Factor XIII-dependent cross-linking of vWF to monomeric collagen (Bockenstedt, P., and R. I. Handin, manuscript submitted for publication).

There is evidence that vWF has distinct domains that bind either to platelet surface glycoproteins or components of connective tissue (15–19). Using a series of monoclonal antibodies directed against specific epitopes on vWF, two groups (15, 16) have demonstrated selective inhibition of vWF binding to collagen or to platelet receptors on GpIb and GpIIb-IIIa. In addition, Girma et al. (18) have used limited proteolysis of vWF polymer to produce fragments with selective binding to either GpIb or the IIb/IIIa complex. The current studies were undertaken to further localize the binding sites on vWF for collagen and GpIb and to develop methods to isolate fragments of vWF polymer containing these functional domains.

Methods

Materials. Iodobeads were obtained from Pierce Chemical Co., Rockford, IL. ^{125}I -Na was obtained from New England Nuclear, Boston, MA. Sephacryl S 1000 and Sepharose CL6b were obtained from Pharmacia Fine Chemicals, Piscataway, NJ. Affigel Gelatin Sepharose, high molecular weight standards, and sodium dodecyl sulfate were obtained from Bio-Rad Laboratories, Richmond, CA. Heparin Sepharose (0.92 mg heparin per ml hydrated gel) and dextran sulfate Sepharose (0.62 mg dextran sulfate, M_r 500,000 per ml hydrated gel) were obtained from Bethesda Research Laboratories, Gaithersburg, MD. Ristocetin was obtained from Bio/Data Corp., Hatboro, PA. Bovine serum albumin, polyethylene glycol M_r 8,000 and M_r 20,000, beta-mercaptoethanol, dextran sulfate M_r 500,000, aprotinin, and phenylmethylsulfonyl fluoride (PMSF), were obtained from Sigma Chemical Co., St. Louis, MO. Staphylococcal V8 protease was obtained from Miles Laboratories, Inc., Naperville, IL. Human fibronectin was a generous gift from Dr. Jan McDonagh, Beth Israel Hospital, Boston, MA. All other chemicals were reagent grade or better.

Formalin-fixed platelets. These were prepared as previously described (20) and resuspended in 50 mM Tris, 0.15 M NaCl, 0.02% sodium azide, pH 7.4 at a final concentration of 6×10^5 platelets per microliter. The ability of native vWF polymers to agglutinate formalin-fixed platelets was determined in the presence of 1 mg/ml ristocetin (21, 22) and agglutination was monitored on a Payton dual-channel aggregometer (Payton Scientific, Inc., Buffalo, NY). Sodium dodecyl sulfate polyacrylamide gel electrophoresis (SDS-PAGE) was performed according to the Laemmli method (23).

J. Clin. Invest.

© The American Society for Clinical Investigation, Inc.

0021-9738/86/03/0743/07 \$1.00

Volume 77, March 1986, 743–749

vWF purification. vWF was purified by a modification of the procedure of Kao et al. (4). 5 liters of plasma obtained within 2–3 d of collection from the American Red Cross Blood Services-Northeast Region (Boston, MA), frozen at -20°C for 24 h, and thawed at 4°C for 18 h was used as the starting material. The resulting cryoprecipitate was collected by centrifugation at 6,500 *g* for 20 min, resuspended in 20 mM Na citrate, pH 6.1, and reprecipitated twice with final concentrations of 5 and 12% polyethylene glycol (M_r 8,000) (PEG) as previously described. The final precipitate was collected by centrifugation at 6,500 *g* for 30 min, the pellet surface was washed twice with ice-cold 0.02 M Tris, 0.15 M NaCl, 8% ethanol, pH 7.4 to remove residual PEG, and was resuspended in 10–15 ml of 0.05 M Tris, 0.15 M NaCl, 0.02% azide, pH 7.4 (TBS), and applied to a 2.5×90 cm siliconized glass column containing Sephacryl S 1000. 4-ml fractions, collected at a 70 ml/h flow rate, were analyzed for ristocetin-dependent platelet agglutinating activity (21), protein concentration by the method of Lowry (24), and for purity by 5% SDS-PAGE after disulfide bond reduction, as described above (23). Those fractions demonstrating a single 220,000-D band on 5% SDS-PAGE were pooled and concentrated by precipitation with 35% (wt/vol) ammonium sulfate followed by centrifugation at 34,800 *g* for 30 min at 4°C . The precipitate was then resuspended in a small volume of TBS and dialyzed extensively against TBS. Purified vWF was then stored at -20°C in 250- μl aliquots for up to 3 wk.

Iodination of vWF. vWF was iodinated using the iodobead technique. One iodobead was preincubated with 0.5–1.0 mCi ^{125}I -Na and 100 μl of TBS for 10 min at room temperature, followed by addition of 500 μg of purified vWF. After 10 min, the iodination was stopped by transfer of the vWF solution to a 0.7×10 cm Sephadex G-25 column preequilibrated with a 1 mg/ml bovine serum albumin solution in TBS and eluted with TBS. Typical specific radioactivity of vWF was 0.20–0.25 $\mu\text{Ci}/\mu\text{g}$ protein.

Preparation of reduced-alkylated vWF. 3 mg of purified native vWF was incubated with 10 mM beta-mercaptoethanol at room temperature for 3 h and then carboxymethylated with 40 mM iodoacetamide for 20 min. The reduced, alkylated vWF was then gel-filtered on a 1 cm \times 92 cm Sepharose CL6b column in 50 mM Tris, 0.5 M NaCl, 0.02% sodium azide, pH 7.4. 1-ml fractions were collected and the absorbance at 280 nm was measured. The vWF oligomer produced by reduction and alkylation typically eluted at fractions 55–65. The desired fractions were pooled and concentrated by dialysis against 20% polyethylene glycol M_r 20,000 in TBS. Samples of the vWF oligomer were analyzed under reducing and nonreducing conditions on 4.3% SDS-PAGE.

Affinity chromatography. Studies of vWF binding to dextran sulfate (M_r 500,000) and heparin substituted Sepharose columns were performed at room temperature on 0.9×6 cm siliconized glass columns containing 6 ml of gel. The columns were equilibrated with 0.05 M Tris, 0.15 M NaCl, pH 7.4 containing 0.1% bovine serum albumin (wash buffer). 10 μg of ^{125}I -vWF in 0.5 ml of the same buffer were applied to each column and 2 ml of buffer eluted to distribute the sample throughout the column volume. 1 h later, the column was washed with 50 ml of the same buffer at a flow rate of 10 ml/h. The effluent, collected in 2.5 ml fractions, was monitored for radioactivity. Once background levels of radioactivity were achieved, a 50-ml linear gradient of 0.15–1.5 M NaCl in 0.05 M Tris, pH 7.4 containing 0.1% albumin was applied at a flow rate of 20 ml/h. The effluent, collected in 2.5 ml fractions, was again monitored for radioactivity.

In some experiments, the heparin sepharose column eluates were analyzed on 5% SDS-PAGE. In those experiments, all wash and eluting buffers contained 0.01% albumin. 120 μl of ice-cold 100% trichloroacetic acid (TCA) were added to 500 μl of each elution fraction. The samples were then centrifuged at 10,000 *g* for 4 min. The supernatant was removed, and the radioactivity in the precipitate was measured in a Beckman gamma 8,000 spectrometer (Beckman Instruments, Inc., Fullerton, CA). The TCA precipitate was washed three times with ice-cold 100% acetone and then dissolved in Laemmli sample buffer for analysis on 5% SDS-PAGE.

Staphylococcal V8 digestion. Purified native vWF polymers were incubated with Staphylococcal V8 protease at a ratio of 1 μg protease to 350 μg protein at 37°C . In some experiments, 30- μl aliquots were removed

from the digest at varying time intervals over 4 h, mixed with 10 U/ml aprotinin and 25 μl sample buffer, and heated to 100°C for 5 min for analysis on 8.75% SDS-PAGE under reducing conditions. After 4 h, 10 U/ml aprotinin and 5 mM PMSF were added, and the protein digest was applied to a 5 ml heparin Sepharose column and allowed to equilibrate for 30–60 min at room temperature. The unbound protein fragments were then eluted with 25 ml of 50 mM Tris, 0.15 M NaCl 0.02% azide, pH 7.4 at a flow rate of 10 ml/h. Protein fragments bound to heparin Sepharose were eluted with 30 ml of 50 mM Tris, 1.0 M NaCl, pH 7.4 at a flow rate of 10 ml/h. The 1.0-M and 0.15-M NaCl eluates were then individually dialyzed against distilled water, frozen in a dry ice acetone bath, lyophilized, and stored at -20°C until further use. Lyophilized samples were resuspended in TBS containing 10 U/ml aprotinin and 5 mM PMSF.

Platelet binding assay. Varying concentrations of native vWF polymer, reduced, alkylated vWF oligomer, or proteolytic fragments were added to assays containing 1 $\mu\text{g}/\text{ml}$ ^{125}I -vWF polymer or reduced, alkylated oligomer, 50 μl of formalin-fixed platelets (600,000 platelets/ μl), and sufficient TBS to bring the final volume to 200 μl . Incubations were initiated by the addition of 0.5 mg/ml ristocetin with stirring. After 60 min, 100 μl of each assay was layered on 200 μl 30% sucrose cushions in 400 μl conical polypropylene tubes and platelet-bound ^{125}I -vWF was separated from free by centrifugation at 10,000 *g* for 4 min at 4°C . The supernatant was aspirated, the tips containing platelet pellets sliced off, and total radioactivity determined in a Beckman gamma spectrometer (Beckman Instruments, Inc.).

Collagen binding assay. 100 μl of acid-soluble calfskin collagen in 20 mM Na citrate, pH 6.1 (1.8 mg/ml) were incubated in individual microtiter wells for 90 min at room temperature. Residual unbound collagen was removed by aspiration and the wells were washed three times with TBS. The wells were then filled completely with a 2 mg/ml albumin solution in TBS and incubated for 1 h at room temperature (15). The wells were then decanted and were ready for immediate use in collagen binding assays. 1 $\mu\text{g}/\text{ml}$ ^{125}I -vWF, varying concentrations (0–700 $\mu\text{g}/\text{ml}$) of vWF polymer, dimer, or vWF digest fragment to be tested, and sufficient TBS to bring the final assay volume to 100 μl were added to the collagen-coated microtiter wells. After 1 h at room temperature, the wells were aspirated dry, washed three times with TBS, and bound radioactivity was measured in a gamma spectrometer.

Results

Previous studies of vWF binding to the platelet have utilized heterogeneous fractions of polymeric vWF as radioligands (25–28). Binding of these vWF fractions to GpIb requires the addition of the cationic antibiotic, ristocetin (4). In addition, binding is saturable and reversible with virtually all the polymeric ^{125}I -vWF bound to the platelet in the presence of ristocetin readily displaced by nonradiolabeled vWF polymer (4, 25, 26). We have recently shown that vWF polymers also bind to collagen monolayers in a saturable, reversible, and specific fashion (Bockenstedt, P., and R. I. Handin, manuscript submitted for publication). In the current studies, an oligomer of vWF was produced from vWF polymer by limited disulfide reduction and alkylation. As shown in Fig. 1 (inset, lane 1), this oligomer has an apparent M_r of 440,000 on 4.3% SDS-PAGE. This mobility is consistent with that of a dimer of the 220,000-D subunit that makes up native vWF polymer. Upon denaturation and further reduction, a single 220,000 M_r band is produced, which is identical to the 220,000-D subunit obtained by fully reducing native vWF polymer (inset, lanes 2 and 3).

To determine whether this vWF dimer (vWF_d) retains the tertiary and quaternary structure necessary for binding to GpIb or to collagen, vWF_d was used as a competing ligand in both the platelet and collagen binding assays. As shown in Fig. 2 A,

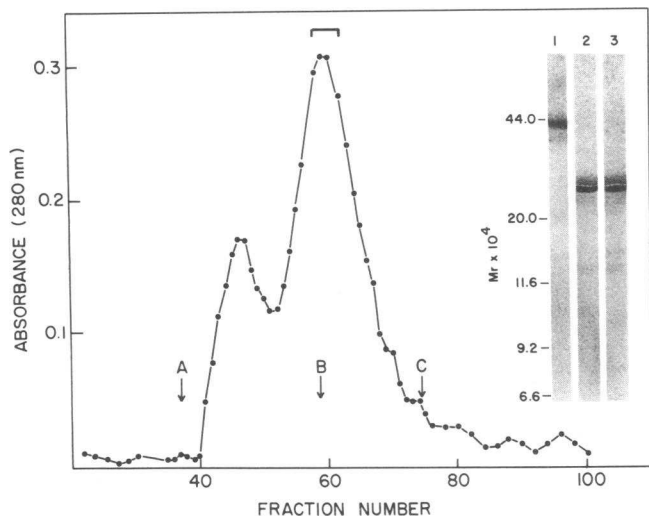


Figure 1. Chromatography of partially reduced, alkylated vWF on Sepharose CL6b. 3 mg vWF polymer were incubated with 10 mM beta-mercaptoethanol for 3 h at room temperature followed by 40 mM iodoacetamide for 20 min and chromatographed on a 120 ml Sepharose CL6b column in 50 mM Tris, 0.5 M NaCl, 0.02% sodium azide, pH 7.4. 1-ml fractions were collected at a flow rate of 10 ml/h. The arrows indicate elution positions of molecular weight markers: A, Blue dextran; B, ferritin; C, catalase. *Inset*, 4.3% SDS-PAGE of: 1, peak 2 unreduced; 2, peak 2 fully reduced; 3, vWF polymer fully reduced. The bar over peak 2 delineates the fractions that were pooled, concentrated, and used in subsequent studies.

vWF_d competes with ¹²⁵I-vWF polymer for ristocetin-dependent binding to formalin-fixed platelets with an IC₅₀ of 100 μg/ml (250 nM). In a subsequent experiment, shown in Fig. 2 B, vWF and vWF_d were competed against ¹²⁵I-vWF_d. In this experiment, the IC₅₀ for polymer and dimer was 4±0.5 μg/ml (~4.2 nM) and 19±2 μg/ml (47 nM), respectively, assuming an average M_r of 1.2 × 10⁶ for polymeric vWF.

In contrast to the results obtained with the platelet, vWF_d does not compete with ¹²⁵I-vWF polymer for binding to collagen monolayers (Fig. 3). This suggests that the domain on vWF responsible for binding to collagen is unfavorably altered during the reduction and alkylation procedure used to produce vWF_d or that collagen binding requires a higher order oligomer.

Previous studies from our laboratory have demonstrated that vWF_d can reassociate into larger oligomers when incubated at the concentrations used in our assay (29). Thus, the effective free concentration of vWF dimer available for binding to the platelet may be reduced by the formation of noncovalently linked oligomers. This creates a complex set of equilibria with both dimer-dimer and dimer-GpIb interactions. To eliminate the possibility that vWF_d reassociate during the binding studies, and to further localize the regions on vWF that bind to GpIb and collagen, proteolytic fragments of vWF were produced by incubation of vWF polymer with Staphylococcal V8 protease. As shown in Fig. 4, during incubation with Staphylococcal V8 protease, there was progressive loss of the 220,000-D subunit of vWF. Two major fragments of 175,000 and 115,000 D and a doublet at 48,000/43,000 were produced within 15–30 min of digestion. Minor bands of 66,000, 96,000, and 150,000 were also apparent within 15 min of digestion but remained constant in amount over the 4-h incubation. After 4 h of incubation, all of the 220,000-D polypeptide had been digested into smaller

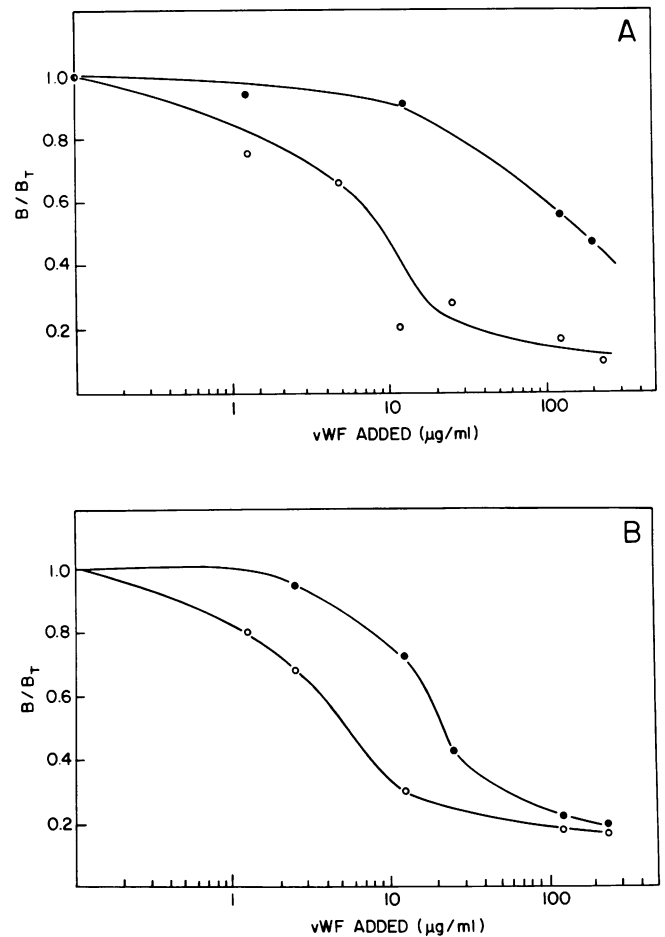


Figure 2. Effect of increasing concentrations of vWF polymer and vWF_d on ristocetin-dependent binding of ¹²⁵I-vWF polymer (A) and ¹²⁵I-vWF_d (B). 1 μg/ml ¹²⁵I-vWF polymer (A) or ¹²⁵I-vWF_d (B) was incubated with varying concentrations of nonradioactive vWF polymer or vWF_d, formalin-fixed platelets, and 1 mg/ml ristocetin for 1 h at room temperature. Platelet-bound radioactivity was separated by centrifugation through 30% sucrose. ○, vWF polymer; ●, vWF_d. Results indicate the mean±SEM of five separate experiments performed in duplicate.

fragments. After thiol reduction, the major bands had mobilities of 175,000, 105,000, and less than 53,000 D when analyzed by 8.75% SDS-PAGE.

We encountered difficulty separating the unreduced fragments produced by Staphylococcal V8 protease digestion by standard gel filtration techniques. Thus, we took advantage of the known affinity of vWF for glycosaminoglycans and designed a chromatographic technique to separate the fragments by their ability to bind to glycosaminoglycan-substituted Sepharose columns. Fig. 5 shows the proteolytic fragments eluted from heparin Sepharose after digestion with Staphylococcal V8 protease. Lanes 1 and 4 are unreduced and reduced samples of the vWF fragments that did not bind to the heparin Sepharose column (fragment 1). The heterogeneous 210,000–225,000-D bands in lane 1 are composed of several disulfide-linked 45,500-, 60,000-, and 110,000-D fragments that can be separated after thiol reduction and electrophoresis on 8.75% polyacrylamide gels (lane 4). Lanes 2 and 3 contain unreduced and reduced samples of the vWF fragment that bound to the heparin Sepharose column (fragment

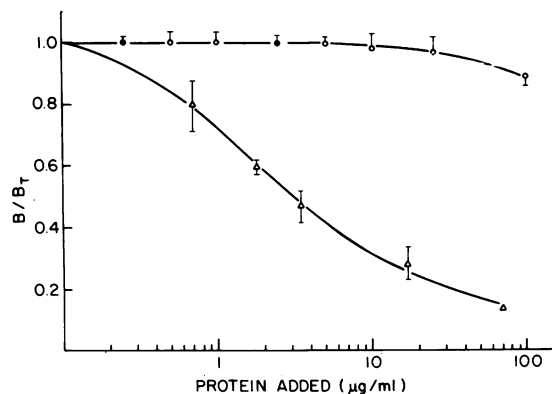


Figure 3. Effect of increasing concentrations of vWF polymer and vWF_d on the binding of ¹²⁵I-vWF polymer to collagen-coated microtiter wells. 1 μg/ml ¹²⁵I-vWF polymer and varying concentrations of nonradioactive vWF polymer or vWF_d were incubated in collagen-coated microtiter wells for 1 h at room temperature. Unbound radioactivity was removed by aspiration, and the wells were then washed three times with TBS. Residual bound radioactivity was measured in a gamma spectrometer. Δ, vWF polymer; ○, vWF_d. Results indicate the mean ± SEM of three separate experiments performed in duplicate.

2). Fragment 2, which is quite homogeneous, has a molecular weight of 285,000 and is composed of two disulfide-linked 175,000- and 115,000-D fragments. Faint 96,000- and 70,000-D bands are thought to be derived from 115,000-D fragments that have been further proteolyzed. These fragments are probably identical to the two major 175,000- and 105,000-D bands noted in the unfractionated Staphylococcal V8 digest (Fig. 4).

To determine whether any of these proteolytic products retained functional activity, we tested fragments 1 and 2 for their ability to compete with native ¹²⁵I-vWF for binding to platelet GpIb and collagen monolayers. As shown in Fig. 6 A, fragment 1, which was not retained by heparin Sepharose, did not compete with ¹²⁵I-vWF polymer for binding to GpIb. Fragment 2, however, which had an estimated *M_r* of 285,000 and was retained on heparin Sepharose, competed with native ¹²⁵I-vWF for binding to GpIb with an IC₅₀ of 22 ± 3 μg/ml (77 nM). Neither of these fragments competed with ¹²⁵I-vWF polymer for binding to collagen monolayers (Fig. 6 B). These studies suggest that the domains on vWF that bind to GpIb and heparin are located on a 285,000-D proteolytic fragment derived from polymeric vWF, while binding to collagen, which is lost by thiol reduction or proteolysis, requires the more complex quaternary structure present in vWF polymer.

Discussion

Although vWF is multifunctional and binds to platelet GpIb (5, 6, 25, 26), GpIIb-IIIa (30–32), components of the subendothelium such as collagen (7–9, 16) and Factor VIII:C (28, 33), the domain on native vWF polymer that binds to each of these receptors or proteins has not been localized. One approach that has been used to localize these domains is to dissociate the polymers into smaller oligomers by thiol reduction. Although previous studies have demonstrated the binding of reduced forms of vWF to platelets, no attempt was made to obtain a preparation of vWF oligomers of homogeneous molecular weight or to separate oligomers from unreduced polymeric vWF (34–37). As

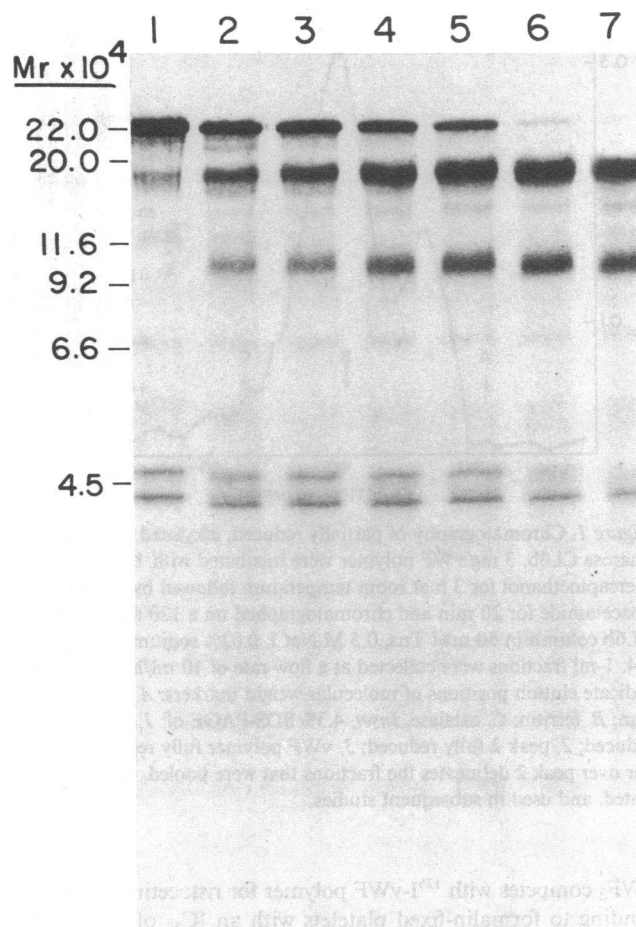


Figure 4. Analysis of digestion of vWF by Staphylococcal V8 protease by 8.75% SDS-PAGE. 350 μg vWF were incubated with 1 μg of Staphylococcal V8 protease at 37°C. At various time intervals, 30-μl aliquots were removed, mixed with 10 U/ml aprotinin, 5 mM PMSF, and 25 μl of Laemmli sample buffer and boiled for 5 min for analysis on SDS-PAGE. Lane 1, 15 min; lane 2, 30 min; lane 3, 60 min; lane 4, 90 min; lane 5, 2 h; lane 6, 3 h; lane 7, 4 h.

our studies indicate (Fig. 1), reduction and alkylation is seldom complete, and a small amount of high molecular weight polymer may remain unless a purification scheme is designed to specifically remove these polymers. We have shown here that a vWF dimer, produced by reduction and alkylation, binds to platelet GpIb. In addition, when this dimeric form was used as a radioligand, both unlabeled dimer and polymer competed for binding. These data suggest that the binding domain for GpIb is retained in a 440,000-mol-wt subunit of polymeric vWF. The disparity in IC₅₀ between native polymer and dimer may reflect cooperativity in binding between multiple disulfide-linked subunits in the native polymer leading to multiple platelet interactions for each vWF polymer or, alternatively, may reflect non-covalent self-association between the reduced, alkylated subunit dimers to form aberrant vWF polymers with only a limited number of platelet binding sites.

Sixma et al. (38) have shown that a reduced, alkylated form of vWF can bind to the subendothelium and enhance platelet adhesion at low but not high shear rates. In contrast, we were unable to show that our vWF_d species binds to collagen coated microtiter wells. This may be due to steric interference with the

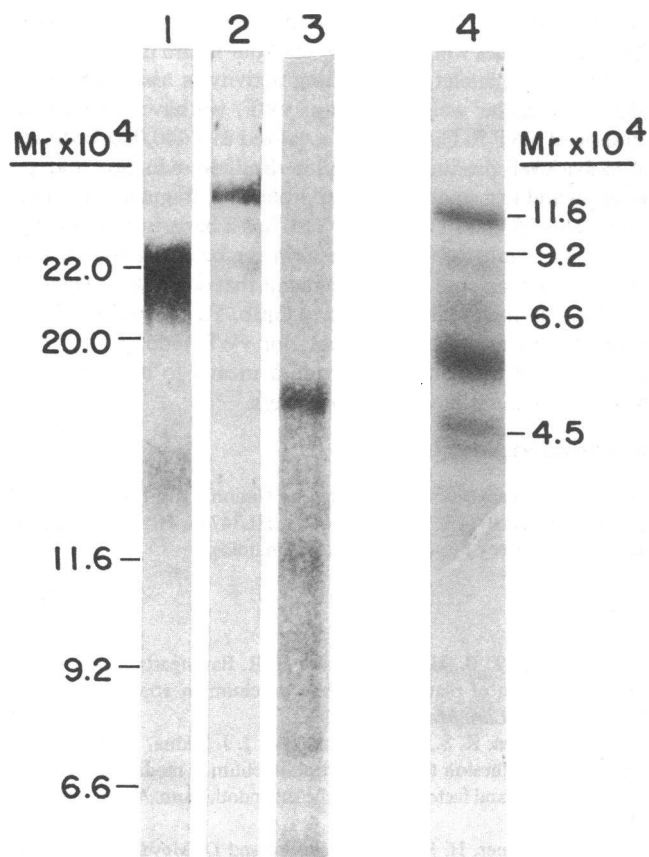


Figure 5. 4.3% SDS-PAGE analysis of vWF proteolytic fragments isolated by chromatography on heparin Sepharose. 3 mg of vWF polymer were digested with 10 μ g Staphylococcal V8 protease for 4 h at 37°C as previously described and applied to a 5 ml heparin Sepharose column. A portion of the vWF appeared in the wash through volume (fragment 1). Bound vWF fragments were then eluted with 1 M NaCl (fragment 2). Fragments 1 and 2 were dialyzed against distilled H₂O, lyophilized, and resuspended in 1 ml TBS containing 10 U/ml aprotinin and 5 mM PMSF for analysis on 4.3% SDS-PAGE. Lane 1, fragment 1 unreduced; lane 2, fragment 2 unreduced; lane 3, fragment 2 reduced; lane 4, fragment 1 reduced and analyzed by 8.75% SDS-PAGE.

collagen binding site by carboxymethyl groups present in the reduced, alkylated form of vWF or, more likely, may suggest that the component to which the dimeric species bound in the studies of Sixma and colleagues was different from collagen. They used everted vessel segments in their studies and did not identify the subendothelial component to which the vWF bound. The vWF subunit could have bound to endogenous subendothelial vWF within the matrix, as they have recently reported (40), or to a tissue glycosaminoglycan or other matrix component.

Because of the problems encountered in using vWF_d as a probe for vWF binding to macromolecules, we approached the problem of isolating functional vWF domains through proteolytic digestion of native polymer. Martin et al. (19) have shown that a 30,000-mol-wt tryptic fragment of vWF retains ristocetin-dependent platelet binding activity. Because of the large size and heterogeneous nature of vWF, reproducible digestion of vWF and separation of proteolytic fragments by standard gel filtration techniques can be difficult. Based on the observation of Suzuki

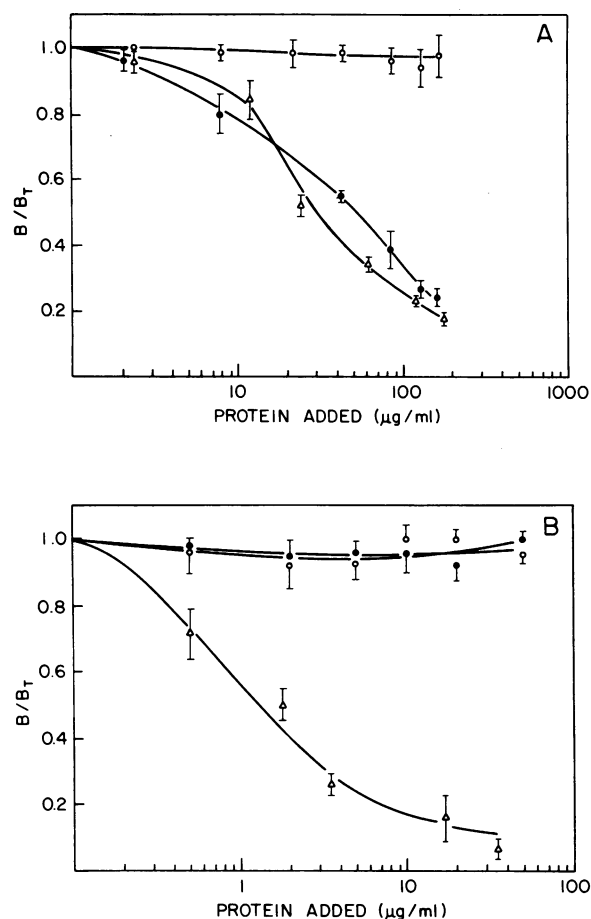


Figure 6. (A) Effects of increasing concentrations of vWF polymer, and vWF fragments 1 and 2 on ristocetin-dependent binding of ¹²⁵I-vWF polymer to platelets. Δ , vWF polymer; \circ , fragment 1; \bullet , fragment 2. Results indicate the mean \pm SEM of four separate experiments performed in duplicate. (B) Effects of increasing concentrations of vWF polymer and vWF digest fragments 1 and 2 on the binding of ¹²⁵I-vWF polymer to collagen monolayers. Δ , vWF polymer; \circ , fragment 1; \bullet , fragment 2. Results indicate the mean \pm SEM of three separate experiments performed in duplicate.

et al. (40) that vWF binds to heparin and dextran sulfate-substituted Sepharose, we designed an affinity chromatographic technique for the isolation of vWF fragments based on their affinities for sulfated glycosaminoglycans. As described above, we have identified a 285,000-D proteolytic fragment of vWF that both binds to heparin Sepharose and retains GpIb binding activity. This species, fragment 2, may be similar to the fragment isolated by Girma et al. (18) using a monoclonal anti-vWF antibody. The 210,000–225,000-mol-wt fragments that were not retained by heparin Sepharose did not bind to platelet GpIb or to collagen. It is possible that these fragments contain the vWF domain that binds to platelet GpIIb-IIIa. This was not evaluated.

Comparison of relative binding affinities of vWF modified by proteolytic digestion or by reduction and alkylation to native polymers is difficult because of the heterogeneity in molecular weight of native vWF. The smallest oligomer of native vWF capable of binding to platelets or the subendothelium has yet to be defined, and there is some suggestion that larger molecular weight forms may have several available binding sites. Thus, to

make comparisons between the IC_{50} of vWF_d , fragment 2, and native vWF used in this study, it is necessary to make assumptions for the molecular weight and number of available platelet binding sites per vWF polymer. It is important to emphasize that plasma vWF multimers vary in estimated relative molecular weight from 440,000 to over 20×10^6 D and that mixtures of these heterogeneous multimers have been used in previously published radioligand binding assays. However, assuming a mean molecular weight of 1.2×10^6 for native vWF , and one GpIb binding site per molecule, vWF polymer would have an IC_{50} of 4.2 nM when ^{125}I - vWF polymer is the radioligand in ristocetin-dependent platelet-binding assays. In comparison, vWF_d and proteolytic fragment 2 would have an IC_{50} of 250 nM and 77 nM, respectively. If, however, we assume that a functional GpIb binding site exists on each 220,000-mol-wt subunit, then the IC_{50} for polymer would become 23 nM, a figure that more closely approximates the IC_{50} for fragment 2. In those experiments in which native vWF and vWF_d competed with ^{125}I - vWF_d for binding to GpIb, the IC_{50} for native polymer and vWF_d was 23 nM and 43 nM, respectively.

These discrepancies in IC_{50} may be explained in several ways. First, they may reflect a selective binding advantage for polymeric vWF which may have multiple high-affinity binding sites on each 1.2×10^6 D polymer. Alternatively, the reduction and alkylation or proteolytic digestion procedures may reduce the binding affinities of vWF_d and fragment 2, respectively, resulting in a greater IC_{50} in competition assays with ^{125}I - vWF polymer. Finally, with vWF_d , a complex equilibrium between vWF_d - vWF_d and vWF_d - vWF polymer may reduce the effective concentrations of vWF_d available for binding to GpIb. It is clear that the apparent affinities of oligomers of native vWF produced by reduction and alkylation and protease digestion are influenced by the choice of radioligands and the assumptions made for the molecular weight of the heterogeneous native vWF polymer.

Although we have used heparin as a convenient tool for isolation of proteolytic fragments of vWF , the observed affinity of vWF polymer for heparin may merit additional investigation. The ability of vWF to bind to heparin has been previously noted, but incompletely defined (40, 41). Two other adhesive proteins present in extracellular matrix, fibronectin and laminin, also share similar affinities for heparin and dextran sulfate sepharose (41-45). The binding of heparin to fibronectin enhances the binding of fibronectin to collagen (43, 44). Laminin also has binding sites for tissue glycosaminoglycans as well as type IV collagen (45). In similar fashion, this specific, high affinity interaction of vWF with glycosaminoglycans may explain one of the mechanisms by which vWF becomes bound to the subendothelium. It is conceivable that the binding of vWF to heparin-like molecules within the subendothelium may actually facilitate interaction of vWF domains with platelet surface receptors or, conversely, the binding of vWF to the platelet receptor may facilitate the binding to the subendothelium. In addition, tissue glycosaminoglycans have been implicated in the polymerization process of matrix fibronectin (46) and collagen (47). Thus, heparin- vWF interactions may be important in polymerization of vWF from dimer into oligomers at the endothelial cell surface. Since the species and amount of extracellular matrix glycosaminoglycans can be influenced by cell culture conditions, the interaction of vWF with certain glycosaminoglycans may explain the discrepancy in vWF polymer size in the medium of cultured endothelial cells described by several laboratories (48-50). Lastly, the affinity of vWF for sulfated glycosaminoglycans like heparin

may have no role in vWF -mediated platelet adhesion *in vivo*. These possibilities will be the subject of our future investigations.

Although platelet agglutinating activity is associated with higher molecular weight forms of vWF , we have shown that binding of vWF to GpIb can be localized to a 440,000-D dimer of native vWF produced by limited disulfide reduction and alkylation and to a smaller 285,000 proteolytic fragment of native vWF . This 285,000-D fragment also has a heparin binding domain. The affinity of vWF for heparin can be used to purify this fragment and separate it from fragments that do not have heparin binding activity and do not bind to GpIb. These studies help to define the structural requirements for vWF binding to GpIb, collagen, and heparin and provide a means to localize these binding domains within vWF polymers.

Acknowledgments

Research for this paper was supported by National Institutes of Health grants 2 T32 HL07523, 5 F32 HL06683, HL34787, HL33014, and by the W. C. Moloney Fund for Clinical Hematology.

References

1. Tschopp, T. B., H. J. Weiss, and H. R. Baumgartner. 1974. Decreased adhesion of platelets to subendothelium in von Willebrand's disease. *J. Lab. Clin. Med.* 83:296-300.
2. Sakariassen, K. S., P. A. Bolhuis, and J. J. Sixma. 1979. Human blood platelet adhesion to artery subendothelium is mediated by factor VIII-von Willebrand factor bound to the subendothelium. *Nature (Lond.)* 279:636-638.
3. Baumgartner, H. R., T. B. Tschopp, and D. Meyer. 1980. Shear rate dependent inhibition of platelet adhesion and aggregation on collagenous surfaces by antibodies to human factor VIII/von Willebrand factor. *Br. J. Haematol.* 44:127-139.
4. Kao, K. J., S. V. Pizzo, and P. A. McKee. 1979. Demonstration and characterization of specific binding sites for factor VIII/von Willebrand factor on human platelets. *J. Clin. Invest.* 63:656-664.
5. Meyer, D., and H. R. Baumgartner. 1983. Role of von Willebrand factor in platelet adhesion to the subendothelium. *Br. J. Haematol.* 54: 1-9.
6. Moake, J. L., J. D. Olson, J. H. Troll, S. S. Tang, T. Funicella, and D. M. Peterson. 1980. Binding of radioiodinated human von Willebrand factor to Bernard-Soulier, thrombasthenic and von Willebrand's disease platelets. *Thromb. Res.* 19:21-27.
7. Morton, L. F., B. Griffin, D. S. Pepper, and M. J. Barnes. 1983. The interaction between collagens and factor VIII/von Willebrand factor: investigation of the structural requirements for interaction. *Thromb. Res.* 32:545-556.
8. Scott, D. M., B. Griffin, D. S. Pepper, and M. J. Barnes. 1981. The binding of purified factor VIII/von Willebrand factor to collagens of differing type and form. *Thromb. Res.* 24:467-472.
9. Houdijk, W. P., K. Sakariassen, P. Nievelstein, and J. Sixma. 1985. Role of factor VIII-von Willebrand factor and fibronectin in the interaction of platelets in flowing blood with monomeric and fibrillar human collagen types I and III. *J. Clin. Invest.* 75:531-540.
10. Okumura, T., and G. A. Jamieson. 1976. Platelet glycoprotein. I. Orientation of glycoproteins of the human platelet surface. *J. Biol. Chem.* 251:5944-5949.
11. Michelson, A. D., B. Melnick, J. Loscalzo, B. S. Coller, and R. I. Handin. 1983. Partial characterization of a binding site for von Willebrand's factor on glycoprotein. *Blood.* 62:262a.
12. Santoro, S. A., and J. F. Cowan. 1982. Adsorption of von Willebrand factor by fibrillar collagen—implications concerning the adhesion of platelets to collagen. *Collagen Relat. Res.* 2:31-43.
13. Nyman, D. 1980. Von Willebrand factor-dependent platelet aggregation and adsorption of factor VIII-related antigen by collagen. *Thromb. Res.* 17:209-214.

14. Kessler, C., C. Floyd, M. Rick, D. Kaizek, S. Lee, and H. Gralnick. 1984. Collagen-factor VIII/von Willebrand factor protein interaction. *Blood*. 63:1291-1298.
15. Baumgartner, H. R., T. B. Tschopp, and D. Meyer. 1980. Shear rate dependent inhibition of platelet adhesion and aggregation on collagenous surfaces by antibodies to human factor VIII/von Willebrand factor. *Br. J. Haematol.* 44:127-139.
16. Sixma, J. J., K. S. Sakariassen, H. V. Stil, W. P. Houdijk, D. W. In der Maur, K. J. Hamer, P. G. de Groot, and J. A. van Mourik. 1984. Functional domains on von Willebrand factor. Recognition of discrete tryptic fragments by monoclonal antibodies that inhibit interaction of von Willebrand factor with platelets and with collagen. *J. Clin. Invest.* 74:736-744.
17. Fujimara, Y., L. Holland, S. Russell, J. Roberts, Z. Ruggeri, and T. Zimmerman. 1985. Von Willebrand factor: a reduced and alkylated 52/48 KDa tryptic fragment contains the ristocetin-induced platelet binding domain. *Clin. Res.* 33:545a.
18. Girma, J. P., G. Piéta, M. Chopek, and T. Edgington. 1984. Localization of distinct Willebrand factor domains interacting with ristocetin or thrombin stimulated platelets using proteolysis and monoclonal antibodies. *Clin. Res.* 33:836a.
19. Martin, S. E., V. J. Marder, C. W. Francis, L. S. Loftus, and G. H. Barlow. 1980. Enzymatic degradation of the factor VIII-von Willebrand protein: a unique tryptic fragment with ristocetin cofactor activity. *Blood*. 55:848-858.
20. Allain, J. P., J. A. Cooper, R. H. Wagner, and K. M. Brinkhous. 1975. Platelets fixed with paraformaldehyde: a new reagent for assay of von Willebrand factor and platelet aggregating factor. *J. Lab. Clin. Med.* 85:318-328.
21. Olson, J. D., W. J. Brockway, D. N. Fass, M. A. Magnusson, and E. J. W. Bowie. 1975. Evaluation of ristocetin-Willebrand factor assay and ristocetin-induced platelet aggregation. *Am. J. Clin. Pathol.* 63:210-218.
22. Howard, M. A., and B. G. Firkin. 1971. Ristocetin—a new tool in the investigation of platelet aggregation. *Thromb. Diath. Haemorrh.* 26:326-369.
23. Laemmli, U. K. 1970. Cleavage of structural proteins during the assembly of the head of bacteriophage T4. *Nature (Lond.)*. 227:680-685.
24. Lowry, O. H., N. J. Rosebrough, A. L. Farr, and R. Randall. 1951. Protein measurement with the folin phenol reagent. *J. Biol. Chem.* 193:265-275.
25. Harrison, R. L., and P. A. McKee. 1983. Comparison of thrombin and ristocetin in the interaction between von Willebrand factor and platelets. *Blood*. 62:346-353.
26. Kao, K.-J., S. Pizzo, and P. McKee. 1979. Platelet receptors for human factor VIII/von Willebrand protein: functional correlation of receptor occupancy and ristocetin-induced platelet aggregation. *Proc. Natl. Acad. Sci. USA*. 76:5317-5320.
27. Morisato, D., and H. Gralnick. 1980. Selective binding of the factor VIII/von Willebrand factor protein to human platelets. *Blood*. 55:9-15.
28. McKee, P. 1981. Observations on structure-function relationships of human antihemophilic/von Willebrand factor protein. *Ann. NY Acad. Sci.* 370:210-226.
29. Loscalzo, J., and R. I. Handin. 1984. Conformational domains and structural transitions of human von Willebrand protein. *Biochem. J.* 23:3880-3886.
30. Fujimoto, T., and J. Hawiger. 1982. Adenosine diphosphate induces binding of von Willebrand factor to human platelets. *Nature (Lond.)*. 297:154-156.
31. Gralnick, H., S. Williams, and B. Collier. 1984. Fibrinogen competes with von Willebrand factor for binding to the glycoprotein IIb/IIIa complex when platelets are stimulated with thrombin. *Blood*. 64:797-800.
32. Schullek, J., J. Jordan, and R. Montgomery. 1984. Interaction of von Willebrand factor with human platelets in the plasma milieu. *J. Clin. Invest.* 73:421-428.
33. Weinstein, M., and L. Chute. 1984. Two distinct forms of factor VIII coagulant protein in human plasma—cleavage by thrombin and differences in coagulant activity and association with von Willebrand factor. *J. Clin. Invest.* 73:307-316.
34. Gralnick, H., S. Williams, and D. Morisato. 1981. Effect of the multimeric structure of the factor VIII/von Willebrand factor protein on binding to platelets. *Blood*. 58:387-397.
35. Suzuki, K., J. Nishioka, and S. Hashimoto. 1980. The influence of 2-mercaptoethanol on von Willebrand factor and bovine platelet aggregating factor. *Thromb. Res.* 17:443-452.
36. Counts, R., S. Paskell, and S. Elgee. 1978. Disulfide bonds and the quaternary structure of factor VIII/von Willebrand factor. *J. Clin. Invest.* 62:702-709.
37. Senogles, S. E., and G. L. Nelsestuen. 1983. Von Willebrand factor—a protein which binds at the cell surface interface between platelets. *J. Bio. Chem.* 258:12327-12333.
38. Sixma, J., K. Sakariassen, N. Beeser-Visser, M. Ottenhof-Rovers, and P. Bolhuis. 1984. Adhesion of platelets to human artery subendothelium: effect of factor VIII-von Willebrand factor of various multimeric composition. *Blood*. 63:128-139.
39. Turitto, V., H. Weiss, T. Zimmerman, and I. Sussman. 1985. Factor VIII/von Willebrand factor in subendothelium mediates platelet adhesion. *Blood*. 65:823-831.
40. Suzuki, K., J. Nishioka, and S. Hashimoto. 1979. Inhibition of factor VIII-associated platelet aggregation by heparin and dextran sulfate, and its mechanism. *Biochim. Biophys. Acta*. 585:416-426.
41. Amrani, D., M. Mosesson, and L. Hoyer. 1982. Distribution of plasma fibronectin (cold-insoluble globulin) and components of the factor VIII complex after heparin-induced precipitation of plasma. *Blood*. 59:657-663.
42. Ruoslahti, E., A. Pekkala, and E. Engvall. 1979. Effect of dextran sulfate on fibronectin-collagen interaction. *FEBS (Fed. Eur. Biochem. Soc.) Lett.* 107:51-54.
43. Johansson, S., and M. Hook. 1980. Heparin enhances the rate of binding of fibronectin to collagen. *Biochem. J.* 187:521-524.
44. Ruoslahti, E., and E. Engvall. 1980. Complexing of fibronectin, glycosaminoglycans, and collagen. *Biochim. Biophys. Acta*. 631:350-358.
45. Del Rosso, M., R. Cappelletti, M. Viti, S. Vannucchi, and V. Chiarugi. 1981. Binding of the basement-membrane glycoprotein laminin to glycosaminoglycans. *Biochem. J.* 199:699-704.
46. Vuento, M., T. Vartio, M. Saraste, C.-H. von Bonsdorff, and A. Vaheri. 1980. Spontaneous and polyamine-induced formation of filamentous polymers from soluble fibronectin. *Eur. J. Biochem.* 105:33-45.
47. Hayashi, T., and Y. Nagai. 1973. Factors affecting the interactions of collagen molecules as observed by in vitro fibril formation. Effect of species and concentration of anions. *J. Biochem.* 74:253-262.
48. Chan, V., and T. K. Chan. 1982. Characterization of factor VIII-related protein synthesized by human endothelial cell: a study of structure and function. *Thromb. Haemostasis*. 48:177-181.
49. Lynch, D. C., T. S. Zimmerman, E. P. Kirby, and D. M. Livingston. 1983. Subunit composition of oligomeric human von Willebrand Factor. *J. Biol. Chem.* 258:12757-12760.
50. Wagner, D., and V. J. Marder. 1983. Biosynthesis of von Willebrand protein by human endothelial cells—identification of a large precursor polypeptide chain. *J. Biol. Chem.* 258:2065-2067.