

Generation of Monoclonal Antibodies to a Human Natural Killer Clone

Characterization of Two Natural Killer-associated Antigens, NKH1_A and NKH2, Expressed on Subsets of Large Granular Lymphocytes

Thierry Hercend, James D. Griffin, Armand Bensussan, Reinhold E. Schmidt, Mary Ann Edson, Agnes Brennan, Christine Murray, John F. Daley, Stuart F. Schlossman, and Jerome Ritz

Division of Tumor Immunology, Dana-Farber Cancer Institute, and the Department of Medicine, Harvard Medical School, Boston, Massachusetts 02115

Abstract

The initial characterization of two monoclonal antibodies directed at antigens selectively expressed on large granular lymphocytes (LGL) is reported in the present paper. These two reagents, anti-natural killer (NK) H1_A and anti-NKH2, were obtained following immunization of mouse spleen cells with a cloned human NK cell line termed JT3. In fresh human peripheral blood, both anti-NKH1_A and anti-NKH2 selectively reacted with cells that appeared morphologically as large granular lymphocytes. However, complement lysis studies and two color fluorescence analysis demonstrated that some LGL express both antigens and other cells express only NKH1_A or NKH2. Functional analysis of these subsets indicated that the population of NKH1_A⁺ cells contains the entire pool of NK active lymphocytes, whereas expression of NKH2 antigen appeared to delineate a unique subpopulation of LGL which, in a resting state, display a low degree of spontaneous cytotoxicity. Expression of NKH1_A and NKH2 was also investigated using a series of nine well characterized human NK clones. All NK clones were found to be NKH1_A⁺ and four out of nine also expressed NKH2. These results strongly supported the view that NKH1_A is a "pan-NK" associated antigen, and indicated that at least a fraction of cloned NKH2⁺ LGL are strongly cytotoxic. Anti-NKH1_A was shown to have the same specificity as the previously described N901 antibody and was found here to precipitate a 200,000–220,000-mol wt molecule in SDS-polyacrylamide gel electrophoresis (PAGE) analysis. Anti-NKH2 was specific for a structure that migrates at 60,000 mol wt in SDS-PAGE analysis under reducing conditions. Two color immunofluorescence analysis of NKH1_A, NKH2, and other NK-associated antigens (Leu7 and B73.1) demonstrated variable degrees of coexpression of these antigens, which confirmed that NKH1_A and NKH2 define distinct cell surface structures. Anti-NKH1_A and anti-NKH2 appear to be useful reagents for characterizing LGL present in human peripheral blood and for identifying functionally relevant subsets within this heterogeneous population of cytotoxic lymphocytes.

Dr. Hercend is a fellow of the Leukemia Society of America. Dr. Ritz is a Scholar of the Leukemia Society of America. Dr. Hercend's present address is Dept. de Biologie Clinique, Institut Gustave Roussy, 94805 Villejuif, France. Address reprint requests to Dr. Ritz.

Received for publication 17 April 1984 and in revised form 24 October 1984.

J. Clin. Invest.

© The American Society for Clinical Investigation, Inc.

0021-9738/85/03/932/12 \$1.00

Volume 75, March 1985, 932–943

Introduction

Both human and murine studies have previously demonstrated that cells capable of mediating natural killer (NK)¹ activity are heterogeneous in terms of their cell surface phenotype defined by monoclonal antibodies (1–3). In order to dissect this heterogeneity and study individual NK cells, we have recently developed techniques for generating cloned NK cell lines using lymphocyte-conditioned medium containing interleukin 2 (IL-2). This has led to the development of a series of human NK clones that maintained consistent cytotoxic activity and appeared to reflect the diversity of uncultured peripheral blood NK cells (4, 5). These NK clones could be classified into three groups by analysis of cell surface markers. One group was shown to be phenotypically similar to mature T lymphocytes and major histocompatibility complex (MHC) restricted cytotoxic T cell clones. Cells in this group express T3 antigen in addition to T8 and T11 antigens and thus appear to have a complete mature T cell phenotype. Moreover, clones in this group have also been shown to express clonotypic receptor like structures, linked to T3 antigen in an analogous fashion to antigen-specific T cells (6). The second group of NK clones express different combinations of T lymphocyte-associated surface antigens including T1, T8, T11, and/or T12, but lack the mature T cell differentiation antigen, T3. Cells in the third group of NK clones do not express any T cell-associated markers or any other lineage related differentiation antigens. In addition to providing a means for demonstrating the phenotypic heterogeneity of NK cells, characterization of NK clones has also suggested that individual NK cells have different restricted target cell specificities (5).

Although analysis of cloned NK cell lines has provided useful information about NK active lymphocytes at the single cell level, it is also evident that the generation of clones is dependent upon the capacity of individual cells to proliferate in conditioned medium containing IL-2. It is not known at the present time whether all the different types of cells capable of mediating NK activity can respond to IL-2 under these experimental conditions and it is therefore possible that some subsets of NK cells cannot be characterized using this approach.

1. Abbreviations used in this paper: ADCC, antibody-dependent cellular cytotoxicity; AV-PE, avidin-conjugated phycoerythrin; EBV, Epstein Barr virus; F/H, Ficoll-Hypaque; GM-FITC, fluorescein-conjugated goat anti-mouse immunoglobulin; IL-2, interleukin 2; LGL, large granular lymphocytes; LCM, lymphocyte-conditioned medium; MHC, major histocompatibility complex; NK, natural killer; PBL, peripheral blood lymphocytes; PBMC, peripheral blood mononuclear cells; PHA, phytohemagglutinin; SDS-PAGE, SDS-polyacrylamide gel electrophoresis.

In order to define directly in fresh human peripheral blood both the entire pool of NK active lymphocytes and functional subsets within this fraction, we have also used NK clones for the generation of monoclonal antibodies that would selectively react with these small populations of cells. In the present studies, a previously described human NK clone termed JT3 (5), which has a very common NK phenotype (T3–T4–T8–T11+N901+), was used as immunogen for production of murine hybridomas. After fusion procedures, the cloned cells were used for identifying monoclonal antibodies with selective reactivity against cells capable of mediating NK activity. This paper reports the initial characterization of two of these reagents, termed anti-NKH1_A and anti-NKH2. Experiments performed here indicate that expression of NKH1_A and NKH2 molecules defines functionally distinct subsets of large granular lymphocytes (LGL) present in human peripheral blood.

Methods

Production of the anti-NKH1_A and anti-NKH2 monoclonal antibodies. 6-wk-old female Balb/c mice were immunized with JT3 cells. The immunization schedule consisted of an initial intraperitoneal injection of 4×10^6 cells emulsified in complete Freund's adjuvant (Difco Laboratories, Detroit, MI) followed by two weekly intraperitoneal injections of 4×10^6 viable cells in phosphate-buffered saline (PBS). 2 wk later, 2×10^6 cells were injected intravenously, followed by splenectomy 3 d later. Somatic cell hybridization was carried out by the method of Kohler and Milstein (7).

The initial screening of hybridoma supernatants was carried out as follows: 10,000 ^{51}Cr -labeled JT3 cells were incubated with an aliquot of each hybridoma supernatant for 30 min at room temperature in V bottom microtiter plates. Rabbit complement at an appropriate nontoxic dilution (usually 1:10) was then added for 1 h at 37°C. Subsequently, plates were spun down and antibody reactivity was measured as release of ^{51}Cr into the supernatants using a gamma scintillation counter. Positive supernatants were then tested under identical experimental conditions against an autologous MHC restricted cytotoxic T cell clone as well as an autologous Epstein Barr virus (EBV) transformed B cell line (Laz 461).

Isolation of subpopulations of peripheral blood cells. Human peripheral blood mononuclear cells (PBMC) were isolated from healthy volunteer donors by Ficoll-Hypaque (F/H) density gradient centrifugation. Monocyte enriched adherent cells were obtained from PBMC by two step adherence on plastic culture dishes. Granulocytes were isolated from F/H gradient pellets using high molecular weight dextran (8). Activated T cells were generated by stimulating E+ cells with phytohemagglutinin (PHA) (2 $\mu\text{g}/\text{ml}$) and tested on day 7 after stimulation.

Previously characterized monoclonal antibodies. Several monoclonal antibodies utilized in these studies have been previously described in detail. Anti-T3 defines all mature T lymphocytes in human peripheral blood (9). T8 antigen is expressed on a subset of peripheral T cells having primarily cytotoxic/suppressor function (10). T4 is expressed on a subset of peripheral T cells having primarily inducer/helper function (11). Anti-T11 defines an antigen associated with the sheep erythrocyte receptor (12). In peripheral blood, N901 antigen is expressed on ~7% of cells which morphologically appear to be a homogeneous population of LGL. Greater than 95% of NK activity in peripheral blood is found within the purified 901+ fraction. Anti-901 antibody does not react with monocytes, granulocytes, B cells, erythrocytes, or platelets (8). The specificity of anti-I2 (anti-Ia) has been previously described in detail (13). Anti-Mo2 defines a 55,000-mol wt molecule selectively expressed on human monocytes (14). Other NK-associated antibodies used in these studies were HNK-1 (15) and B73.1 (16).

B73.1 defines an antigen associated with IgG Fc receptor expressed on some LGL and on granulocytes (17).

Phenotypic analysis of cell surface antigens. Phenotypic analysis was performed by indirect immunofluorescence with fluorescein-conjugated goat anti-mouse Fab IgG (GM-FITC) as described previously (4). Samples were analyzed either on a FACS I (Becton Dickinson & Co., Mountain View, CA) or an Epics V flow cytometer (Coulter Electronics, Hialeah, FL). 10,000 cells were analyzed in each sample. Each histogram displays the number of cells (ordinate) versus the intensity of fluorescence (abscissa) expressed on a logarithmic scale. Ascites derived from a nonreactive hybridoma was used as a negative control to determine background fluorescence. Monoclonal antibodies were always used at saturating concentrations (1:100–1:500).

Two color fluorescence analysis was accomplished by incubating cells simultaneously with a directly fluorescein-conjugated (FITC) monoclonal antibody (either anti-NKH1_A, anti-NKH2, or anti-Ia) and a biotin-conjugated monoclonal antibody (either anti-NKH1_A, anti-NKH2, anti-T3, anti-T11, or Leu7). Anti-Ia fluorescence conjugates and anti-T11 biotin conjugates were provided by Coulter Immunology, Hialeah, FL. Leu7 (HNK-1) was obtained from Becton Dickinson & Co. After incubation at 4°C for 30 min, excess antibody was removed by washing two times and cells were then incubated for 30 min at 4°C with avidin-conjugated phycoerythrin (AV-PE). Background fluorescence was determined by incubating cells as above with a nonreactive fluorescein-conjugated antibody and a nonbiotinylated antibody followed by AV-PE. In some experiments, directly fluorescein-conjugated antibodies (anti-NKH1_A or anti-NKH2) were used simultaneously with directly phycoerythrin-conjugated antibodies B73.1, (Leu11c, Becton Dickinson & Co.). After two additional washes, cells were fixed in 1% formaldehyde and analyzed using an Epics V (Coulter Electronics). The simultaneous analysis of green and red immunofluorescence was obtained from a single laser exciting both FITC and PE at 488 nm. Electronic compensation for the small overlaps of fluorescein fluorescence on the PE detector and PE fluorescence on the fluorescein detector yielded signals essentially identical to those with either reagent used alone. 10,000 cells were analyzed in each sample and results displayed as an orthographic projection looking down on an x, y axis plotting log green fluorescence (FITC) versus log red fluorescence (PE).

Complement lysis experiments. Cells were incubated with either anti-NKH1_A or anti-NKH2 antibodies at a concentration of 25×10^6 cells/ml in RPMI 1640 containing 2.5% pooled human AB serum for 30 min at room temperature. Cells were then washed in serum-free medium and rabbit complement was added at 1:10 final dilution in serum-free medium for 45 min at 37°C. In all experiments presented here, the entire procedure was repeated two times.

Purification of NKH2+ cells. For enrichment of NKH2+ cells by immune rosetting technique, PBMC were incubated at a concentration of 25×10^6 cells/ml for 30 min at 4°C with saturating amounts of anti-Ia, anti-Mo2, and anti-T4. Unbound antibody was removed by two wash steps. To form immunorosettes, monoclonal antibody-treated cells were mixed with a 10% anti-Ig coated erythrocyte suspension at a ratio of 0.75 ml for 10^8 peripheral blood lymphocytes (PBL). The mixture was pelleted (300 g, 10 min) and incubated for 20 min at 4°C. Ig-coated erythrocytes were prepared as previously described (18). The red cell leukocyte mixture was resuspended vigorously and rosetted cells were separated from nonrosetting cells by F/H density gradient sedimentation. Rosetted (T4, Mo2, Ia)+ cells were recovered from the F/H pellet by hypotonic lysis. Subsequently, cells from both fractions were washed two times and used for additional purification or functional assays. The entire procedure was conducted in RPMI 1640 containing 5% pooled human AB serum. Viability was consistently >95% in all cell fractions.

Nonrosetting lymphocytes (T4, Mo2, Ia)– were subsequently separated into NKH2– and NKH2+ fractions using a cell-sorting procedure. Briefly, rosette negative cells (T4, Mo2, Ia)– were incubated with anti-NKH2 for 30 min at 4°C, washed twice, and then incubated with

GM-FITC for an additional 30 min at 4°C. After two additional washes, NKH2+ fluorescent cells were separated from nonfluorescent cells using an Epics V flow cytometer (Coulter Electronics). Background fluorescence was determined with a nonreactive IgM antibody and positive cells were sorted in 10% pooled human AB serum at a rate of 3,000 cells/s. Cells were then washed twice and suspended in RPMI 1640 containing 5% pooled human AB serum for functional assays and cytocentrifuge smears.

Generation of human cloned cell lines. Methods for generation of human NK cloned cell lines have been described in detail (4, 5). Briefly, clones were obtained using a limiting dilution technique. Either PBMC or LGL were cloned at 1 cell/well on a feeder layer of autologous irradiated (5,000 rad) PBMC plus either PHA (2 µg/ml) or allogeneic or autologous irradiated (5,000 rad) EBV transformed B cells. Selected colonies were expanded by addition of culture medium containing lymphocyte-conditioned medium (LCM) (10–15% final dilution) every 3 d. Culture medium was RPMI 1640 supplemented with 1% penicillin-streptomycin, 1% sodium pyruvate, and 20% human AB serum. All cell lines used in these studies have been subcloned at least two times at 100 cells/well on a feeder layer of autologous irradiated PBMC plus irradiated EBV transformed B cells.

Preparation of LCM. LCM was produced by stimulating whole PBMC at a concentration of 2.5×10^6 /ml for 2 h with 5 µg/ml PHA (Wellcome Research Laboratories, Beckenham, England), 5 ng/ml phorbol myristate acetate (Sigma Chemical Co., St. Louis, MO), and 5,000 rad irradiated Laz 388 (0.5×10^6 /ml). The cells were then washed four times to remove the mitogens and resuspended in RPMI 1640 supplemented with 2.5% human AB serum. After 40 h of incubation at 37°C, the supernatants were harvested, passed through 0.45-µm filters, and stored at -70°C.

Cytotoxicity assays. Cytotoxicity assays were performed according to a standard chromium release method previously described (4). All experiments were done in triplicate using V bottom microtiter plates. Medium was RPMI 1640 plus 5% pooled human AB serum and 1% penicillin streptomycin. Assays were performed at various effector/target ratios using 5,000 target cells/well. JM and Molt-4 are T cell leukemia cell lines whereas K562 was established from a patient with chronic myelogenous leukemia.

¹²⁵I surface labeling and immunoprecipitation of antigens from JT3 cloned cells. Cells were surface labeled with ¹²⁵I (New England Nuclear, Boston, MA) using a standard lactoperoxidase method previously described (5). 2×10^7 viable, proliferating JT3 cells were washed with RPMI 1640 and resuspended in PBS and labeled with 1 µCi ¹²⁵I for 15 min at room temperature followed by addition of 100 µl NaI (1 mol/liter). Labeled cells were then harvested and washed three times in cold RPMI 1640. Cell lysate was prepared by resuspending the cell pellet in 300 µl RIPA buffer, pH 7.5, containing 1% Triton X-100, 0.15 M NaCl, 0.01 M NaH₂PO₄, 1 mM EDTA, 1 mM EGTA, 1 mM NaF, 1 mM phenylmethylsulfonyl fluoride, and Trypsin inhibitor and agitated for 40 min at 4°C. Cell lysates were stored at -70°C before use.

Immune precipitation of N901 and NKH1_A antigens were carried out using preformed complexes of rabbit anti-mouse Ig and specific monoclonal antibody as previously described (19). Precipitation of NKH2 antigen was performed using anti-NKH2 antibody bound to CnBr-activated Sepharose 4B. Before being bound to CnBr-activated Sepharose 4B, anti-NKH2 was purified using a standard ammonium sulfate precipitation procedure. In both cases, macromolecular aggregates were removed from cell lysate by ultracentrifugation for 30 min at 100,000 g. Cell lysates were then precleared three times by incubation at 4°C for 1 h with either formalin fixed Staph A bacteria and/or preformed complexes of rabbit anti-mouse Ig and nonspecific monoclonal antibody. Aliquots of precleared lysate were then incubated with specific preformed complexes or with antibody-coated Sepharose beads for 2 h at 4°C. Immune precipitates were then washed four times with radioimmune precipitation assay buffer as above and dissolved in SDS-

polyacrylamide gel electrophoresis (SDS-PAGE) sample buffer and loaded onto separate slots on a 10% polyacrylamide slab gel. Identical aliquots of immune precipitation were run in nonreduced and reduced conditions after addition of 2-mercaptoethanol to SDS-PAGE sample buffer. Gels were dried and radiolabeled precipitates were visualized using standard methods (20).

Results

Generation and cellular reactivity of anti-NKH1_A and anti-NKH2 monoclonal antibodies. Anti-NKH1_A and anti-NKH2 hybridoma antibodies were obtained in a series of fusion experiments with mouse spleen cells immunized against cloned JT3 cells. JT3 is a human cloned NK cell line that has been previously described in detail (5). This clone was derived from purified large granular lymphocytes initially stimulated with PHA and medium containing IL-2. For >18 mo, JT3 cells have been maintained in culture and have been found to display stable phenotype (T3-T4-T8-T11+N901+) and cytotoxic activity when tested against a large panel of in vitro established cell lines. The initial screening strategy was designed to rapidly identify antibodies with preferential reactivity for NK cells and without reactivity with either mature T cells or B cells.

Anti-NKH1_A and anti-NKH2 hybridoma supernatants were initially selected because of their capacity to kill JT3 cells in the presence of complement, whereas they were not able, under identical conditions, to lyse either an autologous EBV transformed B cell line or an autologous MHC restricted cytotoxic T cell clone. Antibody-producing hybridomas were subsequently recloned two times by limiting dilution and immune ascites were produced. Anti-NKH1_A and anti-NKH2 were found to be IgM antibodies by Ouchterlony immunoprecipitations using standard reagents.

Reactivity of both anti-NKH1_A and anti-NKH2 antibodies was tested on purified populations of lymphoid and nonlymphoid cells by indirect immunofluorescence assays and subsequent analysis using either a FACS I or Epics V flow cytometer. Both antibodies were strongly reactive with JT3 immunizing cells. In addition, they were found to react with a small population of lymphocytes present in peripheral blood (Table I A). Monocytes, granulocytes, platelets, red cells, thymocytes, and PHA-activated E+ cells were negative. The immunofluorescence reactivity of anti-NKH2 with JT3 cells, PBL, monocytes, and granulocytes is demonstrated in Fig. 1. Immunofluorescence histograms obtained on the same cell fractions with anti-NKH1_A were almost identical (data not shown). The selective expression of NKH1_A and NKH2 was also demonstrated by further analysis of a series of 14 lymphohematopoietic cell lines derived from either virally transformed cells or tumor cells which were all found to be negative (Table I).

The morphology of NKH1_A+ and NKH2+ cells in unstimulated peripheral blood was determined following purification of these cells by immunofluorescence cell sorting. For this purpose, peripheral blood lymphocytes from two individual donors were incubated with either anti-NKH1_A or anti-NKH2 plus GM-FITC. Small numbers (~50,000 cells) of either NKH1_A+ or NKH2+ cells were then purified using an Epics V and cytocentrifuge smears were prepared and analyzed. It was found that both NKH1_A+ and NKH2+ purified fractions consisted almost entirely (>90%) of large granular lymphocytes and it was not possible to distinguish morphologically between

Table I. Cellular Distribution of NKH1_A and NKH2 Antigens

A Peripheral blood lymphocytes*

Donor	% Reactive cells‡		Donor	% Reactive cells		Mean±SD	
	NKH1 _A	NKH2		NKH1 _A	NKH2	NKH1 _A	NKH2
1	9	10	7	10	2	12.3±4	6.75±3
2	17	10	8	20	4		
3	8	5	9	17	4		
4	13	6	10	15	5		
5	12	7	11	9	10		
6	15	6	12	11	12		

B Negative§ fractions of normal cells^{||}

Monocytes, granulocytes, thymocytes, red cells, platelets, PHA, activated E+ cells—day 7.

C Negative§ in vitro established tumor or viral transformed cell lines

B cells: Laz 221, Nalm-1, Daudi, Laz 388, Laz 156

T cells: Molt-4, HPB ALL, JM

Nonlymphoid cells: K562, KG-1, U937, HL60

* Nonadherent PBMC. ‡ Percentage of reactive cells was calculated by subtracting background fluorescence obtained with an ascites derived from a nonproductive hybridoma. § Less than 3% reactive cells per cell fraction. ^{||} At least three individual experiments per fraction.

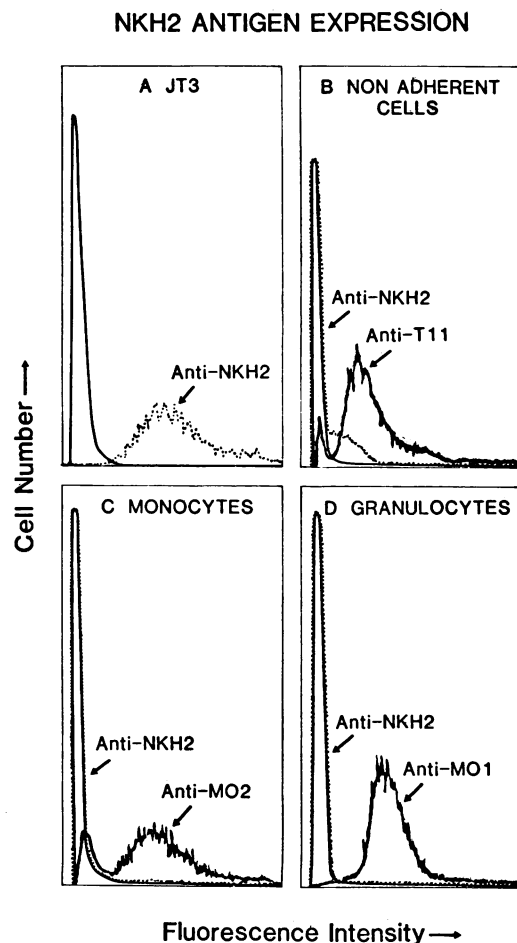


Figure 1. NKH2 antigen expression. Nonadherent cells, monocytes, and granulocytes were purified as described in Methods and tested for NKH2 expression by an indirect immunofluorescence assay. Anti-T11, anti-Mo2, and anti-Mo1 were used to assess the quality of the purification.

NKH1_A+ and NKH2+ cells. A Wright Giemsa stained cyto-centrifuge smear of NKH2+ circulating cells is shown in Fig. 2. The finding that both antibodies selected for their reactivity with NK active clones were also both reactive with LGL was consistent with previous studies that have demonstrated that virtually the entire NK activity present in peripheral blood was mediated by a small fraction of lymphocytes which can be identified morphologically because of their larger size and the presence of azurophilic granules in the cytoplasm (21).

As presented in Table I A, anti-NKH1_A reacted with ~12% of unseparated PBMC and anti-NKH2 reacted with a smaller number of cells, ~7%. However, considerable variability was found from one donor to another when one compared the respective percentages of NKH1_A and NKH2+ cells. For example, donors 1, 11, and 13 had similar percentages of NKH1_A+ and NKH2+ cells, whereas in donors 7, 8, 9, and 10, anti-NKH1_A reacted with at least three times more cells than anti-NKH2. Since it was established that NKH1_A and NKH2 were both present on minor populations of circulating lymphocytes with LGL morphology, we subsequently tried to determine whether LGL coexpressed both antigens or whether some LGL could exclusively express one or the other antigen. To address this question, LGL-enriched fractions were obtained using an immunorosette depletion technique described in Methods. Using this method, PBMC were separated in two fractions (T4, Mo2, Ia)+ (LGL depleted) and (T4, Mo2, Ia)– (LGL enriched). Anti-T4, anti-Ia and anti-Mo2 antibodies were utilized in these experiments because it had been previously been shown that T4, Ia, and Mo2 antigens were not expressed on LGL to any significant degree (8, 14, 22). This procedure resulted in the specific depletion of the majority of T lymphocytes (T4+), B lymphocytes (Ia+), and monocytes (Ia+, Mo2+) from circulating PBMC. Over a series of 10 experiments, ~10–20% of the starting population of PBMC was recovered in the (T4, Mo2, Ia)– fraction and a 4–5-fold enrichment in both NKH1_A+ and NKH2+ cells was obtained in this immunorosette depleted population.



Figure 2. Morphology of NKH2+ cells in fresh uncultured human peripheral blood. Approximately 50,000 cells were sorted following indirect immunofluorescence assay with anti-NKH2 plus GM-FITC using an Epics V. Cytocentrifuge smears were prepared and stained with Wright-Giemsa stain.

To investigate the possible presence of both NKH1_A+ NKH2- and NKH1_A-NKH2+ LGL subsets in peripheral blood, LGL-enriched fractions obtained by immunorosette depletion were treated with either anti-NKH1_A or anti-NKH2 plus complement. After lysis, remaining viable cells were tested using indirect immunofluorescence assays and cell sorter analysis for expression of NKH1_A and NKH2. In these experiments, it was found that treatment with one or the other antibody did not totally eliminate cells expressing the reciprocal antigen. A representative experiment illustrating these results is presented in Fig. 3. Unseparated PBMC from this donor contained 14% NKH1_A+ cells and 9% NKH2+ cells (Fig. 3 A). After immunorosette depletion, 69% NKH1_A+ cells and 30% NKH2+ cells were present in the LGL enriched (T4, Mo2, Ia)- fraction

(Fig. 3 B). When cells from this latter fraction were reanalyzed following treatment with anti-NKH2 plus complement, the reactivity of anti-NKH2 was reduced to 3%, whereas the reactivity of anti-NKH1_A was 68% (Fig. 3 C). Reciprocally, following lysis with anti-NKH1_A, the percent cells reactive with NKH1_A was reduced to 15%, but 35% of NKH2+ cells were still present (Fig. 3 D). As shown in Fig. 3, complement lysis with anti-NKH2 was generally more efficient than with anti-NKH1_A. Using the latter antibody, it was very difficult to eliminate cells displaying very low antigen density. This series of experiments strongly suggested that even though both antigens were exclusively expressed on LGL populations, both NKH1_A+ NKH2- LGL and NKH1_A-NKH2+ LGL subsets were also present in peripheral blood.

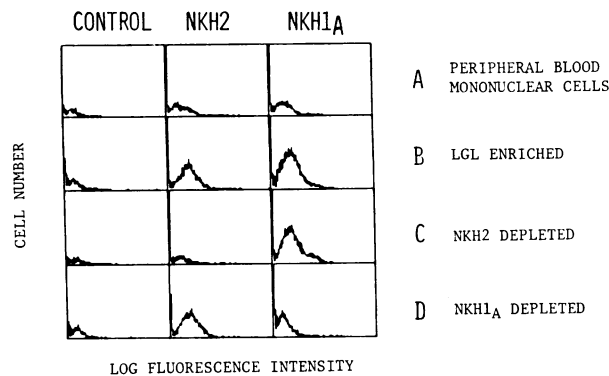


Figure 3. Reactivity of anti-NKH1_A and anti-NKH2 with PBL and purified fractions of LGL. PBMC, LGL enriched, NKH2 depleted, and NKH1_A depleted fractions were obtained as described in Methods. Aliquots of each fraction were tested simultaneously by indirect immunofluorescence for reactivity with either anti-NKH2 or anti-NKH1_A. 10,000 cells were analyzed in each sample using the Epics V. Anti-T6 was used as control antibody. Percent-positive cells was calculated by subtracting background fluorescence obtained with anti-T6, which was <5% in each instance. (A) Reactivity of anti-NKH1_A (14%) and anti-NKH2 (9%) with PBL. (B) LGL-enriched (T4, Mo2, Ia negative) fraction obtained as described in Results. Anti-NKH1_A: 69%; anti-NKH2: 30%. (C) Reanalysis of fraction B after treatment with anti-NKH2 plus complement. Anti-NKH1_A: 68%; anti-NKH2: 3%. (D) Reanalysis of fraction B after treatment with anti-NKH1_A plus complement. Anti-NKH1_A: 15%; anti-NKH2: 35%.

Two color immunofluorescence analysis of nonadherent PBMC. Both anti-NKH1_A and anti-NKH2 were obtained after immunization of mice with a single population of cloned cells, and both antibodies reacted specifically with LGL, which represent only a minor fraction of circulating lymphocytes. It was therefore likely that in addition to LGL expressing either NKH1_A or NKH2, a third population of cells could coexpress both antigens. To demonstrate this point, PBMC were analyzed using two color immunofluorescence with both anti-NKH1_A-FITC and anti-NKH2-biotin/AV-PE. In a similar fashion, NKH1_A-positive cells and NKH2-positive cells were also tested for coexpression of T3, T11, and Ia antigens. Before dual color analysis, freshly isolated mononuclear cells were depleted of monocytes by a 1-h adherence in large plastic dishes at 37°C, but no other enrichment procedures were used in order to avoid potential artifacts that could result from further immunologic manipulation. As shown in Fig. 4, a distinct subset of NKH1_A positive cells coexpresses NKH2 antigen. In addition, the large majority of both NKH1_A or NKH2-positive cells coexpressed T11 antigen, a smaller subset coexpressed T3 antigen, but very few cells also coexpressed Ia antigens. Specifically, of the NKH1_A positive cells in this individual, 29% were NKH2+, 39% were T3+, 83% were T11+ and 1% were Ia+. Within the NKH2-positive population, similar percentages of cells coexpressed these same antigens: 38% were T3+, 79% were T11+, and 3% were Ia+.

Expression of NKH1_A and NKH2 antigens on human cloned NK cell lines. In addition to studying unstimulated peripheral blood cells, a large panel of cloned NK cell lines was also used in order to evaluate the expression of NKH1_A and NKH2 at the single cell level. As with the two color immunofluorescence studies, characterization of these NK

clones also allowed an analysis of the coexpression of NKH1_A and NKH2 with additional antigens such as T3, T11, and N901. The reactivity of anti-NKH1_A and anti-NKH2 was tested using a series of nine cloned NK cell lines (Table II). JT1, JT3, JT9, and JT10 have been previously described in detail (5, 6). JT11 was a clone derived from the same donor. It was found to express the NKTa clonotypic determinant as well as JT9 and JT10 (6). The lytic specificity of JT11 was superimposable to that of JT9 and JT10 when tested against a panel of 15 in vitro established cell lines (unpublished data). Like JT11, JT15 and JT16 were derived from peripheral blood lymphocytes stimulated by an autologous EBV transformed B cell line plus conditioned medium containing IL-2, and were initially selected for their capacity to kill K562 cells. JT15 cells had a mature T cell phenotype coexpressing T3, T8, and T11, but did not react with the anti-NKTA anti-clonotypic antibody. JT16 has a phenotype similar to that of JT3 using the presently available monoclonal antibodies. JT_A17 was derived from a separate donor and obtained from PBL stimulated by allogeneic cells. Its phenotype was unique, since JT_A17 cells express the maturation antigen T3, but not T4 and T8. Finally, JT_B18 was derived from PBL of a third donor, initially stimulated by PHA and medium containing IL-2. Each JT clone has been expanded in conditioned medium containing IL-2 and has maintained a stable phenotype in culture for >3 mo.

As shown in Table II, NKH1_A was present on all clones that had been selected on the basis of one unique criteria, e.g., the capacity of killing K562 cells without apparent preimmunization. In addition, it was found that the reactivity of anti-NKH1_A on these cloned NK cell lines was virtually superimposable to that of the previously described anti-N901 antibody.

The expression of NKH2 was distinct from that of NKH1_A since only four of the nine NK clones were NKH2+. NKH1_A and NKH2 were coexpressed on JT1, JT3, and JT16 and JT_A17 cells. JT1 has a very unique phenotype, since it does not express any T cell associated antigens. JT3 and JT16 are phenotypically identical when tested with the presently available antibodies. Both clones are T3-, T4-, T8-, T11+, N901+, and this appears to represent one very common phenotype of fresh peripheral blood NK cells (8). NKH2 was not present on JT9, JT10, and JT11, which all express the NKTa clonotypic determinant, and was also not found on JT15, which is an additional clone with mature T cell (T3+) phenotype. Nevertheless, JT_A17 cells, which also express T3 antigen, were very strongly NKH2+, which indicated that at least some NK cells with mature T cell phenotype can express this antigen as well as other NK active cells. Interestingly, JT_B18, previously considered to share identical surface markers with JT3 and JT16, was found to be NKH2-. It was also noted that for each clone the reactivity of anti-NKH2 was either <1% of the cells or >95%. In addition, each NKH2+ clone was found to express relatively large amounts of antigen, and the reactivity with anti-NKH2 antibody was stable from one determination to another. The expression of NKH2 was also tested using nine additional, well characterized MHC restricted human T cell clones without NK activity (kindly provided by Dr. Stefan Meuer, Johannes-Gutenberg-Universität, Mainz, Federal Republic of Germany), and all were found to be negative (data not shown).

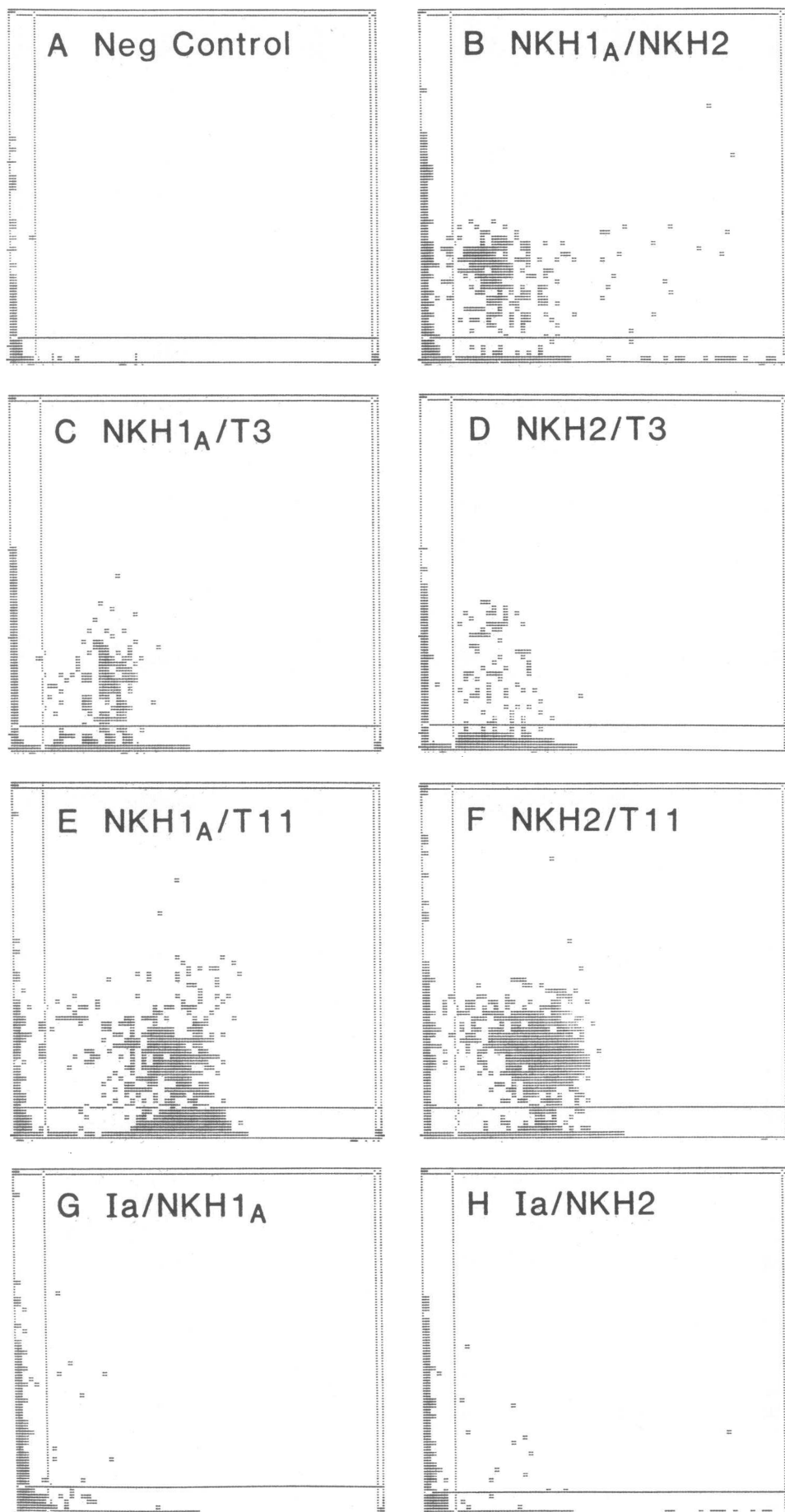


Figure 4. Two color immunofluorescence analysis of nonadherent PBMC. Cells were analyzed for simultaneous expression of two antigens using a combination of a directly fluorescein-conjugated monoclonal antibody (either anti-NKH1_A, anti-NKH2, or anti-Ia) and a biotin-conjugated monoclonal antibody (either anti-NKH1_A, anti-NKH2, anti-T3, or anti-T11) followed by incubation with AV-PE. 10,000 cells in each sample were analyzed using the Epics V, which presented the data as an orthographic projection plotting log green fluorescence (FITC) vs. log red fluorescence (AV-PE) for each combination. Lines within the matrix were used to define four quadrants: GR, positive for both green and red fluorescence; G, positive for green fluorescence only; R, positive for red fluorescence only; and NN, negative for both green and red fluorescence. For example, results for samples A and B were as follows: sample A: GR 0%, G < 1%, R < 1%, NN > 99%; sample B: GR 2.5%, G 6%, R 2.5%, NN 89%.

Log Red Fluorescence/AV-PE

Table II. Expression of NKH1_A and NKH2 on Cloned Human NK Cell Lines

Clone	Origin	Initial stimulation	Phenotype						Reactivity	
			T3	T4	T8	T11	NKTA	901	NKH1 _A	NKH2
JT1	LGL	PHA	—	—	—	—	—	+	+	+
JT3	LGL	Laz 461*	—	—	—	+	—	+	+	+
JT9	PBL	PHA	+	—	+	+	+	+	+	—
JT10	PBL	PHA	+	—	+	+	+	+	+	—
JT11	PBL	Laz 461	+	—	+	+	+	+	+	—
JT15	PBL	Laz 461	+	—	+	+	—	+	+	—
JT16	PBL	Laz 461	—	—	—	+	—	+	+	+
JT _A 17	PBL	Allogeneic PBL	+	—	—	+	—	+	+	+
JT _B 18	PBL	PHA	—	—	—	+	—	+	+	—

* Laz 461: autologous EBV transformed B cell line.

Functional characterization of NKH1_A and NKH2 subsets in resting peripheral blood. Since both anti-NKH1_A and anti-NKH2 are IgM antibodies, it was possible to investigate the potential capacity of each reagent for lysing NK effector cells in human peripheral blood in the presence of complement. For this purpose, peripheral blood mononuclear cells were incubated with either medium, anti-NKH1_A, or anti-NKH2 for 30 min at room temperature. Anti-N901, which is a nonlytic IgG1 antibody directed at NK cells, was used as a control in these experiments. Antibody excess was washed out and complement was then added for 45 min at 37°C. This procedure was repeated two times. Subsequently, remaining viable cells were counted, and ⁵¹Cr-labeled target cells were added. Fig. 5 shows the representative results obtained with PBL from a donor displaying a very high level of spontaneous cytotoxicity against the JM, T cell leukemia line. Treatment of PBL with anti-NKH1_A plus C was followed by a virtually complete loss of NK activity, whereas anti-NKH2 treated PBL displayed a level of cytotoxicity similar to that of the control. Similar experiments were done where two additional cell lines, K562 and Molt 4, were used as targets in NK assays following complement lysis, and identical results were found.

These complement lysis experiments suggested that NKH2+ LGL were functionally distinct from NKH1_A LGL and were not displaying strong NK activity. To confirm this point, NKH2+ cells were purified using cell sorter procedures. In initial experiments, NKH2+ cells were directly sorted from unseparated PBMC and, as expected from lysis depletion studies, appeared to have very weak cytotoxic activity. However, given the very low percentage of NKH2+ lymphocytes in unseparated PBMC, interpretation of this data was difficult for several reasons. Firstly, cell sorting procedures were very long, and this may have resulted in cell damage; secondly, sufficient

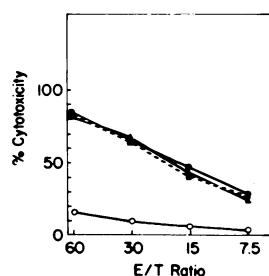


Figure 5. NK activity of fresh uncultured PBM after treatment with either anti-NKH1_A or anti-NKH2 antibodies. ●, PBMC treated with medium plus complement; ▲, PBMC treated with anti-N901; ■, PBMC treated with anti-NKH2; ○, PBMC treated with anti-NKH1_A. Target cells were ⁵¹Cr-labeled JM cells (5,000 cells/well).

numbers of purified NKH2+ cells could not be obtained for testing at high effector/target ratios in cytotoxicity assays. Therefore, in subsequent experiments, NKH2 cells were enriched before being sorted using the immunorosette technique described above. PBMC were separated into (T4, Mo2, Ia)+ and (T4, Mo2, Ia)– fractions. Subsequently, the (T4, Mo2, Ia)– LGL enriched subset was sorted into NKH2+ and NKH2– cells. Ultimately, cytotoxic activity of five distinct fractions was compared in standard 4-h NK assays: starting population of PBMC, (T4, Mo2, Ia)+ cells, (T4, Mo2, Ia)– cells, (T4, Mo2, Ia)– NKH2+ cells, and (T4, Mo2, Ia)– NKH2– cells.

Two representative experiments are shown in Fig. 6. As expected, most, if not all, spontaneous cytotoxicity present in human peripheral blood was found in the (T4, Mo2, Ia)– fraction, whereas little if any NK activity was displayed by cells of the reciprocal (T4, Mo2, Ia)+ subset. More importantly, in five of six experiments, it was found that NKH2+ LGL had low NK activity, whereas (T4, Mo2, Ia)– NKH2– cells displayed a level of cytotoxicity that was the same or slightly higher than that of the unsorted (T4, Mo2, Ia)– lymphocytes. Only in one of six experiments was the NK activity displayed by NKH2+ cells almost as strong as that present in the (T4, Mo2, Ia)– fraction. To ensure that the low NK activity displayed by NKH2+ sorted cells was not due to a blocking effect of anti-NKH2 antibody, we again took advantage of the

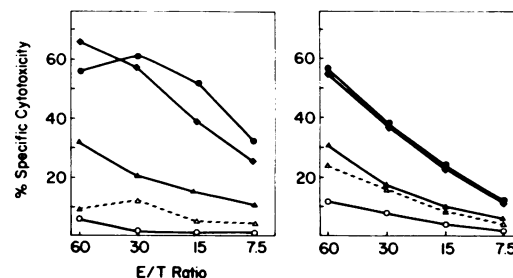


Figure 6. Spontaneous cytotoxicity of various fractions purified from PBL. Purification of various fractions was performed as described in Methods and Results. Target cells were ⁵¹Cr-labeled JM cells. Left and right panels show two individual experiments. ▲, Unseparated PBMC; ○, (T4, Mo2, Ia)+ fraction; ■, (T4, Mo2, Ia)– fraction; ●, (T4, Mo2, Ia)– NKH2– fraction; △, (T4, Mo2, Ia)– NKH2+ fraction.

cloned cell lines. JT3 cells were separately preincubated with saturating concentrations of anti-NKH2 for either 2 or 16 h and subsequently assayed for cytotoxicity against ^{51}Cr -labeled K562 and JM cells. Anti-NKH1_A was tested in parallel in these experiments. It was found that anti-NKH1_A and anti-NKH2 did not alter the cytotoxicity of JT3 cells toward these two representative target cells (data not shown).

Characterization of NKH1_A, N901, and NKH2 antigens. Immunoprecipitation experiments were conducted to identify the molecular weight of the antigens defined by anti-NKH1_A and anti-NKH2. An additional antibody, anti-N901, which has been previously shown to react with NK cells, was studied in parallel because the present results suggested that NKH1_A and N901 may represent the same antigens. In addition, the molecular weight of N901 had not been previously described (8).

Immunoprecipitations of the NKH2 antigen from ^{125}I -labeled JT3 cells were performed using purified anti-NKH2 antibody bound to CnBr activated Sepharose 4B as described in Methods. Under reducing conditions, anti-NKH2 precipitated a single band of 60,000 mol wt in SDS-PAGE. Under nonreducing conditions, two bands, one at ~120,000 and one at 60,000 mol wt, were seen in three out of four experiments. In one of four experiments, only a single band at 60,000 mol wt was obtained in both reducing and nonreducing conditions. It is therefore possible that the 120,000-mol wt band corresponded to aggregates of the monomeric 60,000-mol wt structure (Fig. 7).

To characterize NKH1_A and N901 antigens, immunoprecipitations were done using preformed complexes of rabbit anti-mouse Ig with either anti-N901 or anti-NKH1_A antibodies. These preformed complexes were reacted with ^{125}I surface labeled JT3 cell lysates as described in Methods. As shown in Fig. 8, both anti-N901 and anti-NKH1_A precipitated a broad band at ~200,000–220,000 mol wt. Additional experiments were performed in which the precipitates were analyzed using 5–15% polyacrylamide gradient, and no additional specific bands were identified (data not shown). However, when gradient gels were used, the specific band was seen at a slightly lower molecular weight (180,000–200,000 mol wt) as compared with the 10% polyacrylamide gels.

To confirm that anti-NKH1_A and anti-N901 were directed at the same molecule, a series of competitive binding experiments was performed. Advantage was taken of the difference

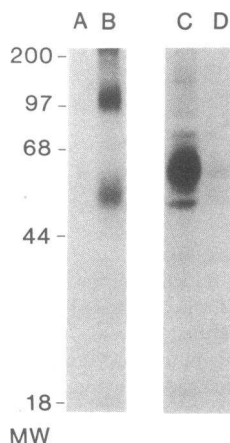


Figure 7. Immunoprecipitation of NKH2 antigen. Immunoprecipitations of specific antigens from ^{125}I -labeled JT3 cells were resolved by SDS-PAGE using 10% polyacrylamide gels as described in Methods. Controls were overexposed to identify nonspecific bands. Radiolabeled standards were run in parallel with immunoprecipitates. *A*, negative control beads (MY4), nonreduced; *B*, anti-NKH2 coated beads, nonreduced; *C*, negative control beads, reduced; *D*, anti-NKH2 coated beads, reduced.

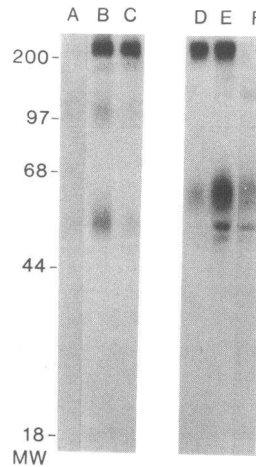


Figure 8. Immunoprecipitation of NKH1_A and N901 antigens. Immunoprecipitations of NKH1_A and N901 antigens were performed using preformed complexes and otherwise resolved as described in the legend to Fig. 6. *A*, negative control complex (MY4), nonreduced; *B*, anti-NKH1_A, nonreduced; *C*, anti-N901, nonreduced; *D*, anti-N901, reduced; *E*, anti-NKH1_A, reduced; *F*, negative control complex (MY4), reduced.

of isotype between the two antibodies (anti-NKH1_A being an IgM and anti-N901 being an IgG1). Using isotype specific FITC in indirect immunofluorescence assays, it was found that anti-N901 effectively blocked binding of anti-NKH1_A, whereas anti-NKH1_A did not significantly affect binding of anti-N901 (data not shown). These results confirmed that both antibodies were specific for the same cell surface antigen and also suggested that the IgG1 antibody (anti-N901) had a higher affinity than the IgM (anti-NKH1_A).

Coexpression of NKH1_A and NKH2 with other NK-associated antigens. In order to determine whether the LGL subsets identified by anti-NKH1_A and anti-NKH2 corresponded to those previously identified by other NK-associated antigens, simultaneous two color immunofluorescence studies were undertaken as described previously (Fig. 4) with T cell antibodies anti-T3 and anti-T11, and with Ia antigen. The other antibodies used in these experiments were HNK-1 (Leu7) and B73.1 (Leu11c). Leu7 is reported to be reactive with the majority of NK active cells in peripheral blood and is also reactive with some T cells that do not have NK activity (15, 23). B73.1 is specific for the IgG Fc receptor that is expressed on cells mediating NK and antibody-dependent cellular cytotoxicity (ADCC) as well as mature granulocytes (16, 17). The reactivity of B73.1 is similar to that described for NKP-15 (24, 25) and VEP 13 (26).

In the two color immunofluorescence analysis shown in Fig. 9, 10,000 cells were analyzed: 21% of cells were NKH1_A+, 12% were NKH2+, 25% were Leu7+, and 9% were B73.1+. Within the NKH1_A+ population, 68% of the cells expressed Leu7 antigen (A) but only 31% coexpressed B73.1 (C). Within the NKH2+ population, 79% coexpressed Leu7 antigen (B) but only 20% also expressed B73.1 (D). Within the Leu7+ population, 50% of cells coexpressed NKH1_A antigen (A) but only 36% also expressed NKH2 (B). Within the B73.1+ population, 71% of cells coexpressed NKH1_A (C) but only 20% of cells also expressed NKH2 (D). These results demonstrate that normal peripheral blood contains populations of cells that coexpress NKH1_A and Leu7 (A), NKH2 and Leu7 (B), NKH1_A and B73.1 (C), and NKH2 and B73.1 (D) but expression of either NKH1_A or NKH2 antigens did not correlate completely with expression of either Leu7 or B73.1. In identical experiments with blood from other normal individuals, coexpression of their antigens in some cells was noted in every instance, but the relative percentages of double

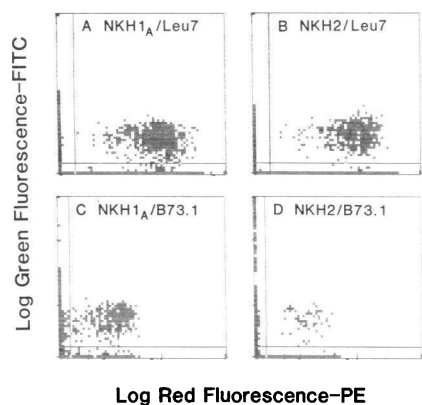


Figure 9. Coexpression of NKH1_A and NKH2 and other NK associated antigens. Cells were analyzed for simultaneous reactivity with directly fluorescein-conjugated monoclonal antibody (either anti-NKH1_A or anti-NKH2) and directly phycoerythrin-conjugated antibody (either Leu7 or B73.1/Leu11c) using an Epics V. 10,000 cells were analyzed in each sample. Negative control sample (not shown) was similar to that depicted in Fig. 4 A and contained 15 of 10,000 cells that were nonspecifically reactive with both control reagents. As described in the legend to Fig. 4, the two parameter matrix was divided into four quadrants using the lines shown in each graph. Percentages of cells contained within each quadrant were as follows: A: GR 13%, G 6%, R 12%, NN 69%; B: GR 9%, G 3%, R 17%, NN 71%; C: GR 7%, G 15%, R 29%, NN 76%; D: GR 2%, G 10%, R 7%, NN 81%.

positive and single positive cells varied. Since each of these antigens has been associated primarily with cells having the morphology of LGL, these results further indicate the existence of extensive heterogeneity within this relatively small subset of circulating cells.

Discussion

NK active cells have been defined operationally as a population of cells capable of killing, without apparent preimmunization, allogeneic target cells such as K562 (see reference 27 for review). According to this definition, it has become apparent in both human and murine systems that the population of cells capable of mediating NK activity is very heterogeneous. In human peripheral blood, the diversity of NK cells was suggested by phenotypic analysis of highly purified LGL fractions. Although LGL appear to be morphologically homogeneous and contain virtually the entire pool of NK active PBL, they were found to be very heterogeneous when tested with a series of monoclonal antibodies directed at antigens such as T8, T10, T11, and Mo1 (4, 22). One approach to begin to characterize homogeneous populations of NK cells has been to develop stable cloned NK cell lines. Studies on NK clones demonstrated that human cells capable of mediating NK activity displayed distinct phenotypes, and perhaps more importantly, distinct target specificities (5). Moreover, it was shown that at least one subset of NK cells with mature T cell phenotype expressed unique, clonally restricted determinants intimately involved in their cytotoxic function (6). Nevertheless, NK clones are activated NK cells which have been triggered to proliferate following various types of activation stimuli. These clones might therefore represent only one fraction of circulating NK cells, i.e., NK cells that can expand in culture

using conditioned medium containing IL-2 (28). Relationships between fresh and cultured NK cells are still unclear, primarily because of a lack of characterization of the various subsets of NK active lymphocytes present in peripheral blood.

To better define the entire population of NK cells and also to identify functionally distinct subsets, we have begun to develop monoclonal antibodies specific for antigens that are selectively expressed on these unique minor cell populations. The strategy we have taken in the present studies is to immunize mice with cloned NK cells and to use these same cells for initial screening of hybridoma supernatants. After identification of hybridomas reactive with the NK clone, antibodies with more selective NK reactivity were readily identified on the basis of lack of reactivity with autologous non-NK cells such as T cell clones and B cell lines. In addition, immunizing NK cloned cells were also used for functional characterization of the reagents as well as biochemical characterization of the target antigens. Using this approach, two monoclonal antibodies, anti-NKH1_A and anti-NKH2, were chosen for further study because they were specific for two distinct surface antigens that appeared to be selectively associated with cells capable of mediating NK activity.

Anti-NKH1_A was found to react with ~12% of circulating lymphocytes and not with any additional hematopoietic cell fraction that was tested. Greater than 90% of circulating NKH1_A+ cells are large granular lymphocytes. Treatment of PBL with anti-NKH1_A plus complement resulted in an almost complete disappearance of NK activity in peripheral blood, although it was found that it was very difficult to destroy LGL displaying lower levels of fluorescence. This observation may explain why there was still a small residual level of NK activity following treatment with anti-NKH1_A plus complement. Very importantly, nine NK clones that have been selected on the basis of one unique functional criteria, i.e., the capacity to kill K562 cells, were all found to express NKH1_A antigen. NKH1_A+ clones included cells such as JT3 or JT16 which have a common NK cell phenotype, i.e., T3-T11+ (4, 23, 24, 29), but in addition, this antigen was found to be present on clones such as JT1 (T3-T11-) and JT9 (T3+T11+), which appear to represent minor populations of NK cells in unstimulated peripheral blood. Biochemical studies indicated that both anti-NKH1_A and a previously described antibody termed anti-N901 (8) were directed at a molecule which migrates at ~200,000-220,000 mol wt in SDS-PAGE analysis. The present data, therefore, confirmed previous results obtained with anti-N901 antibody which demonstrated that virtually the entire NK activity present in human peripheral blood was restricted to the N901+ subset (8). Taken together, these studies strongly suggest that the 200,000-mol wt molecule can be considered as a pan-NK associated cell surface marker, useful for defining resting as well as activated NK cells. Moreover, the availability of lytic (anti-NKH1_A) as well as nonlytic (anti-N901) antibodies specific for the same antigen will be useful in designing future studies with these reagents.

Like anti-NKH1_A, anti-NKH2 was shown to display a selective reactivity for LGL. Anti-NKH2 reacted with ~7% of peripheral blood lymphocytes but monocytes, granulocytes, red cells, platelets, PHA-activated E+ cells, thymocytes, and a series of 14 in vitro established cell lines were found to be negative. While NKH2+ cells could not be readily distinguished morphologically from NKH1_A cells, both complement lysis and two color immunofluorescence studies demonstrated that

distinct subsets of LGL can be either NKH1_A⁺, NKH2⁺, NKH1_A⁺, NKH2⁻, or NKH1_A⁺, NKH2⁺. More importantly, the subsets defined by these antigens were found to be functionally distinct. As opposed to results obtained with anti-NKH1_A, treatment of PBMC with anti-NKH2 plus complement did not significantly alter NK activity in peripheral blood. Moreover, when LGL enriched fractions were sorted into NKH2⁺ and NKH2⁻ subpopulations it was shown that high NK activity was still found in the negative fraction, and NKH2⁺ cells displayed very little NK activity.

In accordance with the studies of unstimulated peripheral blood, phenotypic characterization of a series of NK clones confirmed that both NKH1_A and NKH2 antigens could be coexpressed at the single cell level. Out of nine NK clones which were all NKH1_A⁺, four were found to coexpress NKH2. This clonal analysis indicated that NKH1_A and NKH2 were coexpressed on individual cells such as JT3 or JT16, which have a common NK cell phenotype (T11+T3-N901+). In addition, these experiments showed that NKH2 was present on diverse clones such as JT1 (T11-T3-) and JT_A17 (T3+T11+), suggesting that this antigen can be found on widely different subpopulations of NK active lymphocytes. These results are also consistent with the finding that subsets of both NKH1_A and NKH2 positive cells coexpressed T3 as well as T11 antigen.

In five out of six experiments, resting sorted NKH2⁺ cells displayed low NK activity, whereas clones expressing NKH2 were strongly cytotoxic. This apparent discrepancy cannot be explained by a blocking effect of the antibody on NKH2⁺ sorted cells, since anti-NKH2 was unable to alter cytotoxic function of NKH2⁺ clones. Rather, it may well relate to the fact that the NK clones represent activated cells and each clone was selected specifically on the basis of its cytotoxic activity. In contrast to NK clones, peripheral blood LGL are, in their great majority, resting cells which do not express activation antigens such as T9 or Ia, and which do not divide spontaneously in culture (4, 22). NKH2⁺ clones displaying strong NK activity may therefore represent a counterpart of a fraction of NKH2⁺ circulating LGL which require activation signals (such as interferon or IL-2) to display a fully effective cytotoxicity. If this hypothesis were correct, these NKH2⁺ LGL could function as a pool of "pre-NK cells" that would be able to be recruited during an immune response. Alternatively, cells such as JT1, JT3, JT15, and JT_A17 may simply represent minor populations of NKH1_A⁺ NKH2⁺ LGL displaying strong cytotoxicity in resting peripheral blood. In either case, the present results demonstrate that expression of NKH2 delineates a subset of LGL that is functionally distinct from the subset defined by anti-NKH1_A. Further studies will have to be carried out to establish the relationship which exists between NKH2⁺ LGL and resting as well as activated NK cells.

It was found that anti-NKH2 precipitated a structure of 60,000 mol wt in SDS-PAGE analysis under reducing conditions. This molecular weight is similar to that of B73.1 antigen, which has been shown to function as an Fc receptor structure (16, 17). B73.1 and NKH2 are clearly distinct, however, since the former is expressed on granulocytes as well as LGL. Simultaneous two color immunofluorescence also demonstrated that only a small fraction of cells in peripheral blood coexpresses both antigens, and that most NKH2⁺ cells in peripheral blood are B73.1- and vice versa. In addition, NKH2, as opposed to

B73.1, does not appear to be directly involved in ADCC because anti-NKH2 does not block antibody dependent cytotoxicity mediated by JT3 cells (data not shown) and clones such as JT9, JT10, JT11, JT_B18, which are very strongly lytic in ADCC assays (unpublished data), are NKH2⁻. Nevertheless, the similarity of molecular weight between B73.1 and NKH2 might still suggest that these two NK-associated antigens belong to the same family of molecules.

In summary, the present studies suggest that anti-NKH1_A and anti-NKH2 are capable of dissecting populations of LGL into distinct functional subsets with varying levels of NK activity. Using these two antibodies, LGL can be divided into three populations: NKH1_A⁺, NKH2⁺; NKH1_A⁺, NKH2⁻; and NKH1_A⁺, NKH2⁻. Since NKH2⁺ cells were found to display low NK activity in the resting state, the latter subset appears to contain the most strongly cytotoxic cells in peripheral blood of most normal individuals. LGL in the first subset that express both NKH1_A and NKH2 antigens can display strong cytotoxicity when activated, such as in cultured NK clones, but the functional activity of these cells in unstimulated peripheral blood has not yet been determined. Finally, the function of LGL that express NKH2 antigen only has not been evaluated in this study, but no NK clones representing this phenotype have yet been found, and there is no evidence to indicate that these cells have significant NK activity in peripheral blood. Further studies utilizing dual immunofluorescence markers will be able to purify these different fractions and characterize their respective function in a resting state as well as following activation. Hopefully, the identification of this series of NK-associated antigens will lead to a better understanding of the diversity of NK cells, and ultimately help to clarify both their lineage derivation and biological significance.

Acknowledgments

Dr. Schmidt is a recipient of a fellowship (Schm 596/1-1) from the Deutsche Forschungsgemeinschaft. This work was supported by National Institutes of Health grants CA 19589 and CA 34183.

References

1. Lust, J. A., V. Kumar, R. C. Burton, S. P. Bartlett, and M. Bennett. 1981. Heterogeneity of natural killer cells in the mouse. *J. Exp. Med.* 154:306-317.
2. Minato, N., L. Reo, and B. R. Bloom. 1981. On the heterogeneity of murine natural killers. *J. Exp. Med.* 154:750-762.
3. Zarling, J. M., K. A. Crouse, W. E. Biddison, and P. C. Kung. 1981. Phenotypes of human natural killer cell populations detected with monoclonal antibodies. *J. Immunol.* 127:2575-2580.
4. Hercend, T., S. C. Meuer, E. L. Reinherz, S. F. Schlossman, and J. Ritz. 1982. Generation of a cloned NK cell line derived from the "null cell" fraction of human peripheral blood. *J. Immunol.* 129:1299-1305.
5. Hercend, T., E. L. Reinherz, S. C. Meuer, S. F. Schlossman, and J. Ritz. 1983. Phenotypic and functional heterogeneity of human cloned natural killer cell lines. *Nature (Lond.)* 301:158-160.
6. Hercend, T., S. C. Meuer, A. Brennan, M. A. Edson, O. Acuto, E. L. Reinherz, S. F. Schlossman, and J. Ritz. 1983. Identification of a clonally restricted 90KD heterodimer on two human cloned natural killer cell lines: its role in cytotoxic effector function. *J. Exp. Med.* 158:1547-1560.
7. Kohler, G., and C. Milstein. 1975. Continuous culture of fused cells secreting antibodies of predefined specificity. *Nature (Lond.)* 256:495-497.

8. Griffin, J. D., T. Hercend, R. P. Beveridge, and S. F. Schlossman. 1983. Characterization of an antigen expressed by human natural killer cells. *J. Immunol.* 130:2947-2951.
9. Reinherz, E. L., P. C. Kung, G. Goldstein, and S. F. Schlossman. 1979. A monoclonal antibody with selective reactivity with functionally mature human thymocytes and all peripheral human T cells. *J. Immunol.* 123:1312-1317.
10. Reinherz, E. L., P. C. Kung, G. Goldstein, and S. F. Schlossman. 1980. A monoclonal antibody reactive with the human cytotoxic/suppressor T cell subset previously defined by a heteroantiserum termed TH₂. *J. Immunol.* 124:1301-1307.
11. Reinherz, E. L., P. C. Kung, G. Goldstein, and S. F. Schlossman. 1979. Separation of functional subsets of human T cells by a monoclonal antibody. *Proc. Natl. Acad. Sci. USA.* 76:4061-4065.
12. Reinherz, E. L., S. C. Meuer, K. A. Fitzgerald, R. E. Hussey, H. Levine, and S. F. Schlossman. 1982. Antigen recognition by human T lymphocytes is linked to surface expression of the T3 molecular complex. *Cell.* 30:735-743.
13. Nadler, L. M., P. Stashenko, R. Hardy, J. M. Pesando, E. J. Yunis, and S. F. Schlossman. 1981. Monoclonal antibodies defining serologically distinct HLA-D/DR related Ia-like antigens in man. *Hum. Immunol.* 1:77-90.
14. Todd, R. F., III, L. M. Nadler, and S. F. Schlossman. 1981. Antigens on human monocytes identified by monoclonal antibodies. *J. Immunol.* 120:1435-1442.
15. Abo, T., and C. M. Balch. 1981. A differentiation antigen of human NK and K cells identified by a monoclonal antibody (HNK-1). *J. Immunol.* 127:1024-1029.
16. Perussia, B., S. Starr, S. Abraham, V. Fanning, and G. Trinchieri. 1983. Human natural killer cells analyzed by B73.1, a monoclonal antibody blocking receptor functions. I. Characterization of the lymphocyte subset reactive with B73.1. *J. Immunol.* 130:2133-2141.
17. Perussia, B., O. Acuto, C. Terhorst, J. Faust, R. Lazarus, V. Fanning, and G. Trinchieri. 1983. Human natural killer cells analyzed by B73.1, a monoclonal antibody blocking Fc receptor functions. II. Studies of B73.1 antibody-antigen interaction on the lymphocyte membrane. *J. Immunol.* 130:2142-2148.
18. Griffin, J. D., R. P. Beveridge, and S. F. Schlossman. 1982. Isolation of myeloid progenitor cells from peripheral blood of chronic myelogenous leukemia patients. *Blood.* 60:30-37.
19. van Agthoven, A., C. Terhorst, E. L. Reinherz, and S. F. Schlossman. 1981. Characterization of T cell surface glycoproteins T1 and T3 present on all mature T lymphocytes and functionally mature thymocytes. *Eur. J. Immunol.* 11:18-21.
20. Bonner, W. M., and R. A. Laskey. 1974. A film detection method for tritium-labelled proteins and nucleic acids in polyacrylamide gels. *Eur. J. Biochem.* 46:83-88.
21. Timonen, T., J. R. Ortaldo, and R. B. Herberman. 1981. Characteristics of human large granular lymphocytes and relationship to natural killer and K cells. *J. Exp. Med.* 153:569-582.
22. Ortaldo, J. R., S. L. Sharrow, T. Timonen, and R. B. Herberman. 1981. Determination of surface antigens on highly purified human NK cells by flow cytometry with monoclonal antibodies. *J. Immunol.* 127:2401-2409.
23. Abo, T., M. D. Cooper, and C. M. Balch. 1983. Characterization of HNK1+ (Leu7) human lymphocytes. I. Two distinct phenotypes of human NK cells with different cytotoxic capability. *J. Immunol.* 129:1752-1757.
24. Lanier, L. L., A. M. Le, J. H. Phillips, N. L. Warner, and G. F. Babcock. 1983. Subpopulations of human natural killer cells defined by expression of the Leu7 (HNK1+) and Leu11 (NK15) antigens. *J. Immunol.* 129:1789-1796.
25. Phillips, J. J., and G. F. Babcock. 1983. NKP-15: a monoclonal antibody reactive against purified human natural killer cells and granulocytes. *Immunol. Lett.* 6:143.
26. Rumpold, H., D. Kraft, G. Obexer, G. Bock, and W. Gebhart. 1982. A monoclonal antibody against a surface antigen shared by human large granular lymphocytes and granulocytes. *J. Immunol.* 129:1458-1464.
27. Trinchieri, G., and B. Perussia. 1984. Human natural killer cells: biologic and pathologic aspects. *Lab. Invest.* 50:489-513.
28. Abo, T., C. A. Miller, C. M. Balch, and M. D. Cooper. 1983. Interleukin 2 receptor expression by activated HNK1+ granular lymphocytes: a requirement for their proliferation. *J. Immunol.* 131:1822-1826.
29. Breard, J., E. L. Reinherz, C. O'Brien, and S. F. Schlossman. 1980. Delineation of an effector population responsible for natural killing and antibody-dependent cellular cytotoxicity. *Clin. Immunol. Immunopathol.* 18:145-150.