

Intrarenal Distribution of Blood Flow in the Transplanted Dog Kidney: Effect of Denervation and Rejection

Stanley M. Rosen, ... , Joseph E. Murray, John P. Merrill

J Clin Invest. 1967;46(7):1239-1253. <https://doi.org/10.1172/JCI105617>.

Research Article

Serial measurements of intrarenal distribution of blood flow have been recorded in anesthetized dogs with the $^{133}\text{xenon}$ “washout” technique. The results showed that normal kidneys redistributed their blood flow after laparotomy and mobilization of the kidney. This alteration consisted of a diminution in percentage of total renal blood flow supplied to the fastest flowing component, and a diminution of renal mass supplied by that component. This effect lasted for as long as 7 days. Thereafter, the blood flow distribution remained stable.

Autotransplanted kidneys had a stable distribution of blood flow between 0 and 77 days after operation, the values being identical with the stable normal kidney. Homotransplanted kidneys had the same intrarenal distribution of blood flow after operation as the autotransplanted kidneys. Whereas the intrarenal distribution of blood flow of the autotransplanted kidneys remained stable, a redistribution occurred in the homotransplanted kidneys as rejection progressed. This phenomenon occurred before marked elevation of blood urea nitrogen.

The redistribution was due to a decrease in percentage of blood flow supplied to the fastest flowing component, and a relative reduction of tissue mass perfused by this component.

Radioautography of the kidneys before rejection demonstrated that the cortex was homogeneously perfused by the fastest flowing component of blood flow. As rejection progressed, a reduced area of cortex was perfused by this component. Terminally, the [...]

Find the latest version:

<https://jci.me/105617/pdf>



Intrarenal Distribution of Blood Flow in the Transplanted Dog Kidney: Effect of Denervation and Rejection *

STANLEY M. ROSEN,† BRUNO P. TRUNIGER,‡ HANS R. KRIEK, JOSEPH E. MURRAY,
AND JOHN P. MERRILL

(From the Departments of Medicine and Surgery, Harvard Medical School and Peter Bent Brigham Hospital, Boston, Mass.)

Summary. Serial measurements of intrarenal distribution of blood flow have been recorded in anesthetized dogs with the ¹³³Xenon "washout" technique. The results showed that normal kidneys redistributed their blood flow after laparotomy and mobilization of the kidney. This alteration consisted of a diminution in percentage of total renal blood flow supplied to the fastest flowing component, and a diminution of renal mass supplied by that component. This effect lasted for as long as 7 days. Thereafter, the blood flow distribution remained stable.

Autotransplanted kidneys had a stable distribution of blood flow between 0 and 77 days after operation, the values being identical with the stable normal kidney. Homotransplanted kidneys had the same intrarenal distribution of blood flow after operation as the autotransplanted kidneys. Whereas the intrarenal distribution of blood flow of the autotransplanted kidneys remained stable, a redistribution occurred in the homotransplanted kidneys as rejection progressed. This phenomenon occurred before marked elevation of blood urea nitrogen.

The redistribution was due to a decrease in percentage of blood flow supplied to the fastest flowing component, and a relative reduction of tissue mass perfused by this component.

Radioautography of the kidneys before rejection demonstrated that the cortex was homogeneously perfused by the fastest flowing component of blood flow. As rejection progressed, a reduced area of cortex was perfused by this component. Terminally, the fastest flowing component was located in the outer medulla.

It is suggested that the reduction in cortical blood flow produced by immunological mechanisms may play a prominent role in the ensuing renal failure.

Introduction

Anatomical changes in the intrarenal vasculature are a prominent feature in the homotransplanted

* Submitted for publication July 5, 1966; accepted April 13, 1967.

A partial report of this work was read at the Surgical Forum of the American College of Surgeons on October 20, 1965.

† Work performed during a medical fellowship from the Nuffield Foundation.

Address requests for reprints to Dr. Stanley M. Rosen, The General Infirmary, Leeds 1, England.

kidney during rejection (1, 2). They consist of the accumulation of immunologically competent cells around small blood vessels and within the peritubular capillaries (1-3). These changes are most prominent in the cortex and, indeed, may be minimal in the medulla even at a late stage of rejection (1).

Such histological features may be associated with alterations in total renal blood flow. Kountz and

‡ Work performed during a fellowship from the Massachusetts Heart Association.

co-workers (3) demonstrated a decrease in renal venous blood flow as rejection progressed. In the same group of experiments, they used the disappearance rate of intravenously injected hippuran- ^{131}I as a measurement of "effective renal plasma flow" and showed that this parameter was concomitantly decreased. Jackson and Mannick (4) measured renal blood flow with a sine-gated electromagnetic flowmeter placed around the renal artery of the dog and confirmed these observations.

No attempt has been made to determine whether this decrease in blood flow occurs uniformly throughout the kidney. In these experiments serial measurements of intrarenal distribution of blood flow were made with intra-arterial injections of ^{133}Xe in dogs with normal kidneys, dogs with autotransplanted kidneys, and dogs with homotransplanted kidneys.

Methods

Theoretical considerations in determination of intrarenal distribution of blood flow. A bolus of ^{133}Xe injected into the major renal artery is distributed among the intrarenal components of blood flow. The quantity of xenon received by each of these components is directly proportional to the fraction of total renal blood flow con-

stituting the respective component. The xenon attains almost instantaneous equilibrium between blood and parenchyma (5) and can only be removed from the parenchyma by urine, lymph, and capillary blood flow. Since urine and lymph flow are small compared with blood flow, the rate of disappearance of the xenon from the renal parenchyma is a measure of capillary blood flow.

If it is assumed that the major blood flow components are arranged in parallel within the kidney, then the quantity of ^{133}Xe (A) remaining in the renal parenchyma at time t after injection of the bolus is represented by $A = A^{\text{I}}_0 e^{-k^{\text{I}}t} + A^{\text{II}}_0 e^{-k^{\text{II}}t} \dots + A_0^{\pi} e^{-k^{\pi}t}$ (6, 7), where A_0^{π} represents the amount of radioactivity supplied to component π and $-k^{\pi}$ is the rate constant of removal of radioactivity by that component. Values for A_0^{π} and k^{π} can be determined by graphical analysis of a semilogarithmic plot of total radioactivity against time (8). In the normal kidney four exponential components can be separated (Figure 1). A straight line is drawn by inspection through the terminal portion of the curve and extrapolated to zero time. This line is component IV, its intercept represents A_0^{IV} , and the slope of the line is $-k^{\text{IV}}$. The quantity of xenon represented at each point in time on the extrapolated line is subtracted from the original curve, and a new curve is constructed whose terminal portion represents component III. Components II and I are derived in sequential fashion. Thorburn and co-workers (6) have demonstrated that computer analysis of the curve gives excellent agreement with this graphical analysis. The fraction of total renal blood flow supplied to each component is calculated from the amount of xenon in each component at zero time divided by the quantity of xenon in all four components at zero time. Flow per unit mass of tissue in each component is derived from the respective decay constant (k) by using the Kety application of the Fick principle (9). Thus, $F = (k \times \lambda \times 100) / \xi$, where F is the flow rate in milliliters per 100 g tissue per minute, k the slope of the line, λ the partition coefficient for ^{133}Xe between tissue and blood, and ξ the specific gravity of the tissue. Lambda is 0.65 for renal tissue and 7.65 for fat (10).

The relative mass of tissue supplied by each component is obtained by dividing the quantity of xenon supplied by each component (A_0) by the rate constant of removal of xenon for that component (k) (7). Thus, the ratio of mass of tissue perfused by component I (M^{I}) divided by the mass of tissue perfused by component II (M^{II}) = $[(A^{\text{I}}_0/k^{\text{I}})/(A^{\text{II}}_0/k^{\text{II}})]$.

Since A^{III}_0 and A^{IV}_0 are small compared to A^{I}_0 and A^{II}_0 , the percentage of renal tissue perfused by component I = $[(A^{\text{I}}_0/k^{\text{I}})/(A^{\text{I}}_0/k^{\text{I}} + A^{\text{II}}_0/k^{\text{II}})]$ (12).

Validation of the inert gas washout technique for the measurement of regional blood flow in kidney has been confirmed by several groups (11-13); components I, II, III, and IV in the normal kidney are localized to the cortex, outer medulla, inner medulla, and renal fat, respectively (6). However, certain limitations of interpretation of the curve must be considered during abnormal situations. Anatomical localization of blood flow com-

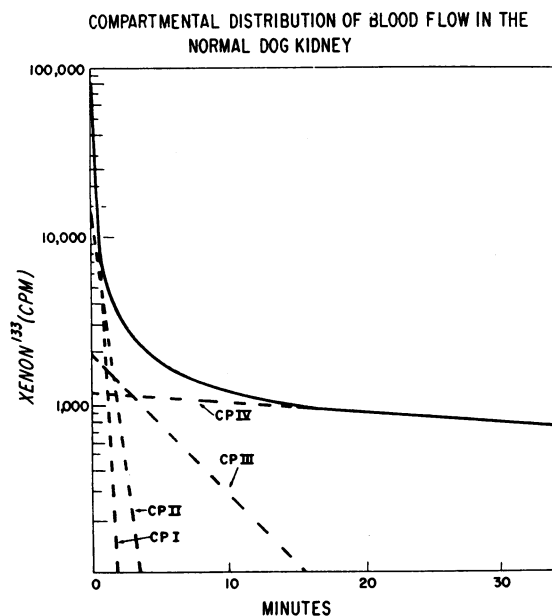


FIG. 1. CURVE OBTAINED BY EXTERNAL MONITORING OVER NORMAL DOG KIDNEY AFTER INJECTION OF BOLUS OF ^{133}Xe INTO A RENAL ARTERY. THE CURVE WAS ANALYZED GRAPHICALLY AS THE SUM OF FOUR EXPONENTIAL COMPONENTS. THESE ARE REPRESENTED BY INTERRUPTED LINES.

ponents may be inconstant and would have to be validated on each occasion. Unstable areas of blood flow may produce problems of curve analysis, since under these conditions the curve does not consist of a series of graded exponentials. Arteriovenous "shunts" are not detected with this technique, because only blood flowing through capillaries is capable of "washing" out xenon from the parenchyma.

Procedure. Three groups of mongrel dogs weighing between 14 and 21 kg were used for the experiments.

Group 1 consisted of 16 dogs with normal kidneys. The left renal artery was exposed through a midline incision. A catheter of polyvinyl chloride tubing was introduced into the artery by the technique of Herd and Barger (14). The 1-cm length of catheter remaining within the arterial lumen had previously been stretched so that its external diameter was 0.5 to 0.8 mm and it did not obstruct blood flow. The catheter was secured by a stitch that juxtaposed the arterial adventitia to a collar surrounding the catheter. The other end of the catheter was passed through the abdominal wall. Patency of the catheter lumen was maintained by refilling the catheter daily with heparin (1,000 U per ml).

Group 2 consisted of 15 dogs with a kidney autotransplanted in the right iliac fossa. An end-to-end anastomosis of the renal and common iliac arteries and an end-to-side anastomosis of renal and iliac veins were performed, and the ureter was reimplanted into the bladder. A catheter was sutured in the common iliac artery supplying the transplant and threaded through a stab incision in the abdominal wall. The ischemic time was less than 45 minutes, and no attempt was made to perfuse the kidney during this period.

Group 3 consisted of 12 dogs. Each dog had a homotransplanted kidney inserted in the right iliac fossa and a catheter placed in the right common iliac artery, using the same technique as described for Group 2. At the same operation the dogs' own kidneys were removed. Blood urea nitrogen was serially estimated before and after this procedure with the Technicon autoanalyzer.

Serial measurements of the intrarenal distribution of blood flow (IDBF) were made in the three groups of dogs at a constant level of pentobarbital anesthesia. The initial dose was given slowly in a foreleg vein until the outer canthal reflex disappeared. Additional pentobarbital was given intermittently to maintain a constant depth of anesthesia.

A bolus of 200 to 400 μC of ^{133}Xe dissolved in less than 0.5 ml isotonic saline was injected into the arterial catheter.

The rate of disappearance of the ^{133}Xe was externally monitored by a scintillation probe with a 2-inch sodium iodide crystal placed 3 inches from the end of a cylindrical collimator. The output from the probe was led into either a linear ratemeter connected to a linear chart recorder or a digital ratemeter connected to a digital printer.

The time constant for the linear ratemeter was 0.5 second for the first minute, 2.5 seconds for the second and third minutes, 10 seconds for the fourth and fifth minutes, and 40 seconds for the remainder of the 45-minute

curve. The chart recorder speed was 12 inches per minute for the first 5 minutes and 0.75 for the subsequent 40 minutes.

The digital ratemeter and printer, respectively, integrated and recorded counts every 2 seconds for the first minute, every 6 seconds for the second and third minutes, every 20 seconds for the fourth and fifth minutes, and every minute for the subsequent 40 minutes.

Counts per minute were plotted on a logarithmic scale every 2 seconds for the first minute, every 6 seconds for the second and third minutes, every 20 seconds for the fourth and fifth minutes, and at minute intervals thereafter. Four exponential components representing four blood flow components were derived from this curve as previously described (8) (Figure 1).

Some measurements were made with simultaneous recordings of the probe output by the linear and digital recording systems. The resultant curves produced identical results.

Since the counts per minute recorded by the external counting system were proportional to the quantity of xenon, the fraction of total renal blood flow that constituted each component was calculated by dividing the number of counts in that component at zero time by the sum of the counts in all four components at zero time. The blood flow per unit mass of tissue in each component was calculated from the rate of decay of activity in the component.

Radioautographs of four normal, three autotransplanted, and seven homotransplanted kidneys were performed at selected intervals after operation. The animal was anesthetized to the prescribed standard, and the intrarenal distribution of blood flow was measured with ^{133}Xe . The renal vessels were then exposed without disturbing the kidney. A bolus of 200 to 400 μC ^{86}Kr dissolved in 0.5 ml saline was injected through the renal arterial catheter, and a ligature was immediately tied around the renal vessels. The kidney was rapidly removed and frozen to -40°C in a mixture of dry ice and acetone and maintained at this temperature for the rest of the procedure. Coronal sections of kidney 1 mm thick were then exposed on Kodak AA industrial x-ray paper, with exposure times of $\frac{1}{2}$ to 6 hours. The kidney slices were then photographed so that anatomical boundaries could be superimposed on the radioautograph. Results were obtained from a minimum of five slices from each kidney.

^{86}Kr was used for radioautography, since it is predominantly a beta ray emitter. However, xenon and krypton share the same properties described as prerequisites for application of the method (15, 16). Thus, the components represented in the ^{133}Xe washout curves were the same as those represented in the ^{86}Kr radioautographs.

Results

Normal kidneys. Sixteen measurements made in 13 dogs less than 7 days after mobilization of the kidney and insertion of renal arterial catheter are shown in Table I. The mean percentages of

TABLE I
Normal dog kidney within 7 days of operation to mobilize kidney and insert renal arterial catheter*

Dog	Day	% of total renal blood flow supplied to component				Blood flow				$\frac{M_I}{M_{II}}$
		I	II	III	IV	I	II	III	IV	
1	1	53	42	4	1	450	164	26	17	0.46
2	2	50	43	5	2	470	172	26	20	0.42
3	3	47	19	23	11	596	19	6	1	0.08
	5	42	30	20	8	1,390	32	6	1	0.03
	7	43	32	14	11	297	39	2	11	0.18
4	0	78	16	4	2	397	113	20	11	1.38
5	7	86	9	2	3	277	61	10	12	2.09
6	2	43	48	7	2	710	190	30	11	0.24
7	3	89	6	2	3	270	47	11	11	2.57
8	2	33	51	5	6	675	154	12	8	0.17
9	3	69	26	2	3	675	216	30	15	0.85
10	0	87	7	4	2	142	32	11	6	2.79
11	6	89	6	2	3	386	90	18	22	0.35
12	2	76	16	4	4	338	108	27	7	1.52
	6	80	16	2	2	429	77	10	9	0.89
13	6	82	13	2	3	466	73	19	17	0.99
Mean		65.8	23.8	6.4	4.1	498	99	16	6	0.93
SE		4.9	3.9	1.7	0.8	73	15.5	2.3	2.3	0.22
SD		19.7	15.5	6.7	3.2	292	62	9.2	9.2	0.89

* Measurements of percentage of total renal blood flow supplied to each component (A_0) and blood flow in milliliters per 100 g tissue per minute for each component (k) are shown. Ratio of mass of tissue supplied by component I divided by mass of tissue supplied by component II has been calculated (M_I/M_{II}).

total renal blood flow supplied to components I, II, III, and IV, respectively, were $65.8 \pm 4.9\%$ SE, $23.8 \pm 3.9\%$, $6.4 \pm 1.7\%$, and $4.1 \pm 0.8\%$. The mean blood flow per 100 g tissue per minute was 498, 99, 16, and 6 ml, respectively. The tissue mass supplied by component I was 0.93 ± 0.22 SE

the size of the tissue mass supplied by component II.

Eighteen measurements in eight dogs made more than 7 days after this operation are shown in Table II. The mean percentages of total renal blood flow supplied to components I, II, III, and IV, re-

TABLE II
Normal dog kidney more than 7 days after operation to mobilize kidney and insert renal arterial catheter

Dog	Day	% of total renal blood flow supplied to component				Blood flow				$\frac{M_I}{M_{II}}$
		I	II	III	IV	I	II	III	IV	
3	16	85	12	2	1	338	82	5	9	1.72
5	11	79	12	5	4	338	95	16	12	1.85
	37	81	13	2	4	310	110	18	9	2.21
	88	90	3	3	4	193	45	8	5	7.06
	120	71	19	3	3	386	113	15	5	1.57
9	24	86	7	4	3	482	93	17	7	2.37
	64	80	13	4	3	190	53	10	8	1.72
10	31	90	5	3	2	200	41	13	12	3.68
11	20	82	13	2	3	562	128	8	8	1.43
	20	72	24	2	2	450	135	11	7	0.90
14	26	89	8	2	1	540	104	16	7	2.14
	28	89	8	2	1	600	142	14	19	2.64
	33	79	17	2	2	900	142	16	10	0.73
	54	85	13	1	1	818	90	12	7	0.72
15	12	89	6	3	2	338	69	18	13	3.05
16	36	85	9	2	4	163	50	5	8	2.89
	50	83	12	3	2	164	60	11	4	2.53
	84	85	7	3	5	251	71	16	8	3.76
Mean		83.6	11.1	2.6	2.6	395	91	13	9	2.39
SE		1.2	1.2	0.7	0.3	48	8.4	0.95	0.8	0.35
SD		5.3	5.1	0.95	1.21	209	37	4.2	3.5	1.47

TABLE III
Dog kidney within 7 days of autotransplantation

Dog	Day	% of total renal blood flow supplied to component				Blood flow				$\frac{M_I}{M_{II}}$
		I	II	III	IV	I	II	III	IV	
1	1	84	10	5	1	193	63	22	17	2.75
4	0	86	11	2	1	416	132	16	23	2.48
7	3	82	10	4	4	193	51	12	17	2.17
9	7	92	5	2	1	600	75	25	20	2.32
11	6	76	20	2	2	386	90	18	22	0.89
17	1	89	9	1	1	587	89	16	10	1.50
18	2	88	8	1	3	456	59	9	5	1.83
19	0	77	21	1	1	300	117	9	5	1.44
20	2	68	26	5	1	563	90	17	19	0.42
21	0	84	13	2	1	491	69	20	19	0.91
22	3	88	10	1	1	772	146	16	15	1.67
Mean		80.7	15.1	3.1	1.5	492	102	18	15	1.67
SE		2.0	1.8	0.6	0.3	54	10	2	2	0.22
SD		7.7	7.1	2.3	1.0	210	37	6	6	0.73

spectively, were $83.6 \pm 1.2\%$ SE, $11.1 \pm 1.2\%$, $2.6 \pm 0.7\%$, and $2.6 \pm 0.3\%$. The mean blood flow per 100 g tissue per minute for each of these components was 395, 91, 13, and 9 ml, respectively. The tissue mass supplied by component I was 2.39 ± 0.35 SE greater than that supplied by component II. The difference between the means of the intrarenal distribution of blood flow when measured before and after 7 days are significant at $p < 0.001$, $p < 0.01$, and $p < 0.02$ for components I, II, and III, respec-

tively. However, the mean blood flow rates per 100 g tissue for these compartments were not significantly different when measured before or after the seventh postoperative day. Relatively more tissue was perfused by component I after the seventh postoperative day ($p < 0.01$).

Autotransplanted kidneys. Eleven measurements in 11 dogs made less than 7 days after operation are shown in Table III. The mean percentages of total renal blood flow supplied to components I, II, III, and IV were, respectively,

TABLE IV
Dog kidney more than 7 days after autotransplantation

Dog	Day	% of total renal blood flow supplied to component				Blood flow				$\frac{M_I}{M_{II}}$
		I	II	III	IV	I	II	III	IV	
5	11	76	19	2	3	370	110	14	14	1.19
	13	72	19	4	5	169	78	11	25	1.75
	37	90	6	1	3	257	84	19	6	4.92
7	37	81	13	5	1	252	91	20	28	2.26
9	10	92	4	2	2	600	75	25	20	2.88
11	20	79	18	2	1	450	100	14	9	0.98
16	36	85	9	2	4	163	50	5	4	2.89
17	8	79	15	2	4	474	150	35	10	1.67
	11	76	21	2	1	540	142	18	15	0.95
18	17	75	18	3	4	386	77	20	12	0.83
20	10	78	20	1	1	675	159	10	12	0.93
	14	76	20	3	1	750	154	10	17	0.78
	30	69	26	4	1	676	234	36	26	0.92
	30	67	29	2	2	568	204	20	16	0.83
	77	87	9	3	1	563	108	30	18	1.85
23	8	77	12	6	5	900	62	10	11	0.44
	10	73	11	8	8	1,080	37	14	11	0.23
6	23	81	16	1	2	901	260	9	6	1.44
	40	87	10	2	2	300	77	17	9	2.24
Mean		79	15.5	2.9	2.6	530	119	18	14	1.57
SE		1.6	1.5	0.4	0.4	60	14	1.9	1.6	0.26
SD		6.8	6.6	1.9	1.9	262	62	8.4	6.9	1.11

TABLE V
Dog kidney less than 2 hours after first set homotransplantation

Dog	% of total renal blood flow supplied to component				Blood flow				$\frac{M_I}{M_{II}}$	$\frac{M_I}{M_I + M_{II}} \times 100\%^*$
	I	II	III	IV	I	II	III	IV		
25	89	9	1	1	540	86	12	9	1.58	61.2
26	80	16	2	2	270	61	14	17	1.12	52.8
27	89	8	1	2	237	57	12	14	2.68	72.8
28	78	20	1	1	314	86	8	14	1.01	50.3
29	73	23	2	2	360	75	11	5	0.66	39.7
30	79	19	1	1	234	71	11	13	1.26	55.8
31	75	22	2	1	257	104	13	9	1.37	57.8
32	78	16	4	2	371	111	18	11	1.45	59.2
33	88	10	1	1	322	90	14	12	2.39	70.5
34	73	23	3	1	429	150	24	14	1.11	52.6
35	85	13	1	1	422	87	25	12	1.25	55.6
36	83	14	2	1	659	200	35	25	1.78	64.0
Mean	79.0	15.5	2.9	2.6	530	119	18	14	1.47	57.7
SE	1.7	1.5	0.16	0.16	118	13	2.2	1.4	0.17	2.6
SD	5.8	5.3	0.57	0.57	408	45	7.8	4.9	0.57	8.9

* Renal mass perfused by component I.

$80.7 \pm 2.0\%$ SE, $15.1 \pm 1.8\%$, $3.1 \pm 0.6\%$, and $1.6 \pm 0.3\%$. The mean blood flows per 100 g tissue per minute in these components were 492, 102, 18, and 15 ml, respectively. The tissue mass supplied by component I was 1.67 ± 0.22 SE greater than that supplied by component II.

These results were not significantly different from the means of 19 measurements made in 10 dogs with autotransplanted kidneys more than 7 days after operation (Table IV), nor from the results obtained in normal kidneys more than 7 days postoperatively. However, the distribution of

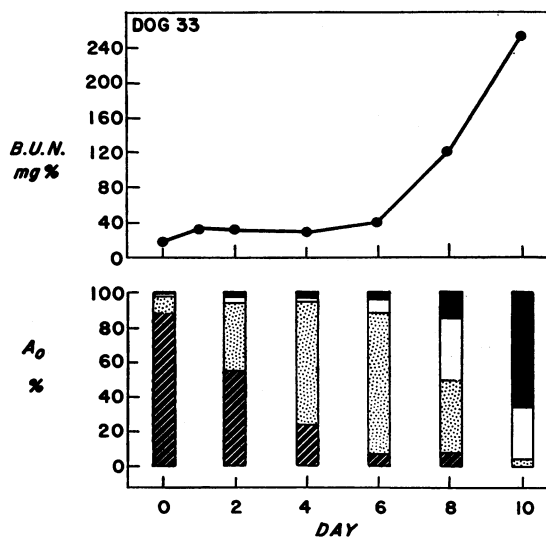


FIG. 2. SERIAL MEASUREMENTS OF INTRARENAL DISTRIBUTION OF BLOOD FLOW IN THE HOMOTRANSPLANTED KIDNEY OF A BILATERALLY NEPHRECTOMIZED DOG. Percentages of total renal blood flow (A_0) received by components I, II, III, and IV are represented by crosshatched, dotted, white, and black blocks, respectively. Alteration in component I occurred before elevation of blood urea nitrogen (BUN)

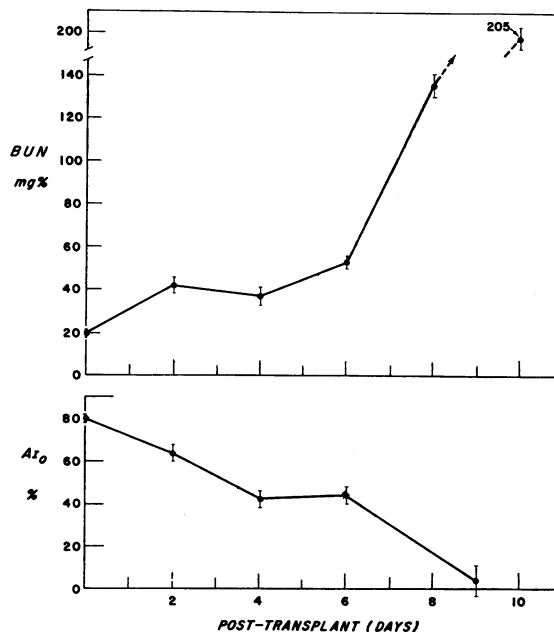


FIG. 3. RELATIONSHIP OF MEAN VALUES AND STANDARD ERRORS FOR BUN AND PERCENTAGE OF TOTAL RENAL BLOOD FLOW RECEIVED BY COMPONENT I (A_{I_0}) OF HOMOTRANSPLANTED KIDNEY IN A GROUP OF BILATERALLY NEPHRECTOMIZED DOGS.

blood flow in the autotransplanted kidneys within 7 days of operation differed significantly from that in the normal kidneys within the first 7 postoperative days ($p < 0.01$).

Homotransplanted kidneys. The values of measurements made in 12 dogs within 2 hours of com-

pletion of the vascular anastomoses are shown in Table V. The mean of these values did not differ significantly from the mean values in the autotransplanted group from 0 to 7 days postoperatively, but showed a significantly greater percentage of renal blood flow supplied to component I

TABLE VI
Changes in intrarenal distribution of blood flow and blood urea nitrogen (BUN) during rejection of a homotransplanted kidney

Dog	Day	% of total renal blood flow supplied to component				Blood flow				$\frac{M_I}{M_{II}}$	$\frac{M_I}{M_I + M_{II}} \times 100\%$	BUN	Radioautography
		I	II	III	IV	I	II	III	IV				
26	0	80	16	3	2	270	61	14	17	1.12	52.8	12	
	3	76	20	2	2	246	87	17	15	1.33	56.9	59	
	5	58	37	4	1	257	113	18	18	0.69	40.6	35	
	8	18	33	25	24	346	39	11	10	0.06	5.9	216	
27	0	89	8	1	2	237	57	12	14	2.68	72.8		
	2											34	
	3	80	17	1	2	349	71	14	19	0.93	48.5	68	
	6	73	22	2	3	221	82	15	15	1.26	59.3	64	
	8	31	45	19	5	142	54	17	14	0.27	20.8	176	
28	9	20	54	22	4	98	55	16	23	0.20	16.9	237	
	0	78	20	1	1	314	86	8	14	1.01	50.0	18	
29*	2	65	28	5	2	142	59	15	25	0.97	49.2	54	
	0	73	23	2	2	360	75	11	5	0.66	39.7	16	
30	2	82	13	3	2	338	82	24	7	1.54	60.6	99	
	4	40	53	5	2	520	139	28	17	0.20	16.6	73	
	6	24	69	3	4	529	87	19	11	0.05	5.3	51	
	8	17	73	8	2	750	102	11	20	0.03	2.7	61	
	10		80	15	5		59	15	19			178	
31	0	79	19	1	1	234	71	11	13	4.17	80.7	29	
	1	18	72	6	4	643	37	14	20	0.01	13.8		
	4	9	69	17	5	711	59	22	24	0.01	11.6		+
33*	0	75	22	2	1	257	104	13	9	1.37	57.8		
	1	74	17	6	2	146	61	22	23	1.82	64.7	14	
	4	47	45	5	3	169	110	20	12	0.69	40.9	26	+
	0	88	10	1	1	322	90	14	12	2.45	71.0	18	
34	2	55	39	4	2	500	96	20	6	0.27	21.3	37	
	4	24	72	2	2	965	160	18	21	0.05	4.9	28	
	6	7	81	7	4	901	96	16	15	0.08	0.9	39	
	8	8	42	35	15	482	34	10	21	0.01	0.1		
	10		4	31	65		93	17	17			252	+
35	0	73	23	3	1	429	150	24	24	1.11	52.6		
	1	78	16	4	2	370	71	18	7	0.93	48.2	39	+
36	0	85	13	1	1	422	87	25	12	1.25	55.5	25	
	2	52	26	17	4	208	104	38	12	1.00	50.0	54	
	4	18	72	6	4	600	135	25	15	0.05	5.0		+
37	0	83	14	2	1	659	200	35	25	1.78	64.0	18	
	2	83	12	3	2	386	102	20	18	1.83	64.8	39	
	4	62	31	5	2	338	104	22	21	0.61	38.0	23	
	6	26	68	4	2	246	96	14	13	0.15	12.9	59	
	8	18	53	25	5	360	68	24	14	0.06	6.8	140	
	9	17	35	35	13	482	44	14	22	0.04	4.8	192	+
37	2	70	25	3	2	317	113	22	21	1.94	66.6	24	
	6	61	30	5	4	270	118	20	12	0.88	47.0	57	+

* A distinction could not be made between components I and II on the final curves of dogs 29, and 33.

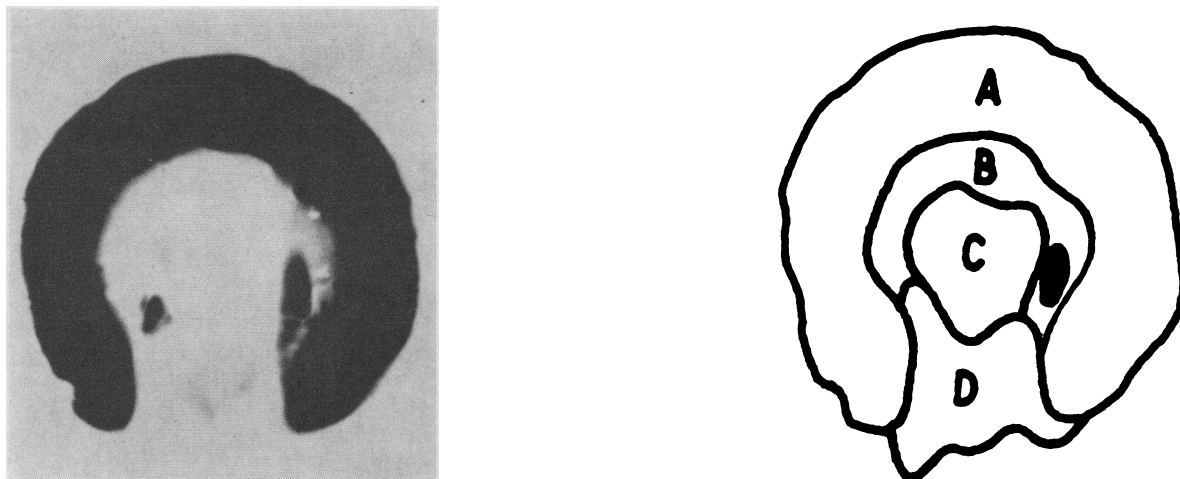


FIG. 4. RADIOAUTOGRAPH OF A SLICE FROM A NORMAL KIDNEY REMOVED IMMEDIATELY AFTER INJECTION OF A BOLUS OF $^{86}\text{KRYPTON}$ INTO A RENAL ARTERY. Anatomical boundaries of the slices are shown alongside. A = cortex, B = outer medulla, C = inner medulla, D = renal fat. Black ovoid areas represent large blood vessels. Cortex was homogeneously perfused by component I, which had normal values on "washout" curves.

when compared to the normal kidneys within the first 7 days after laparotomy. Serial measurements made in 10 untreated homotransplanted dogs showed the same pattern of change in each case. There was a progressive diminution in the percentage of blood flow supplied to component I (Figure 2). This diminution occurred before there was a massive rise in blood urea nitrogen. The sequential relationships of the mean blood urea nitrogen and size of component I in the

group with homotransplanted kidneys are shown in Figure 3.

The progressive diminution in size of component I was associated with a relative decrease in tissue mass perfused by this component (Table VI). The blood flow rate in component I during and at the end of the rejection process differed from initial rates in individual dogs. In some dogs the blood flow rate more than doubled, whereas in others it declined to values less than control. In

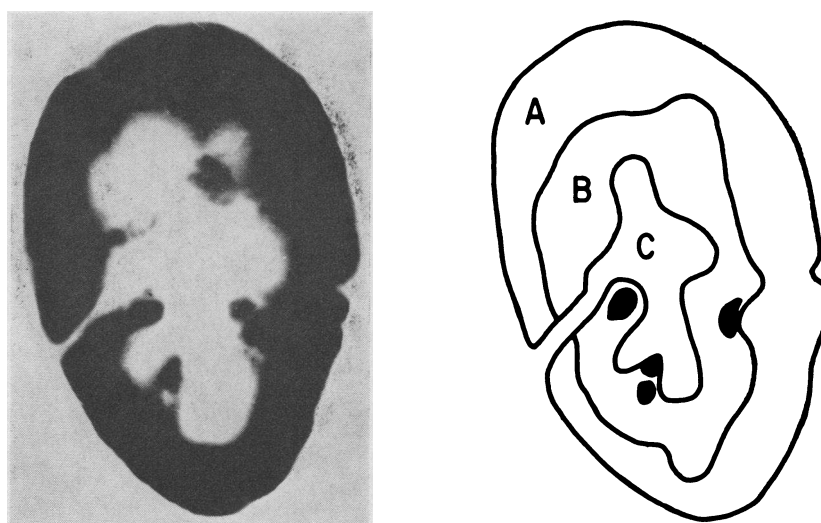


FIG. 5. RADIOAUTOGRAPH OF A SLICE FROM AN AUTOTRANSPLANTED KIDNEY. Experimental conditions and abbreviations are as in Figure 4.

three kidneys component I was not apparent at the terminal uremic phase.

Radioautography. All kidneys were removed immediately after injection of $^{85}\text{krypton}$ and before significant washout of gas could occur. The greatest density of radioactivity in the renal parenchyma, therefore, occurred in the area of the highest flow (component I). A high density of radioactivity also appeared in the renal fat on some occasions, since its partition coefficient was nine times that of renal parenchyma. The fat also contained some residual activity from the $^{133}\text{xenon}$ previously injected to record the associated washout curve.

The radioautographs of the four normal kidneys studied more than 7 days after the insertion of the renal arterial catheter are represented by Figure 4. The cortex was homogeneously filled with the greatest density of radioactivity. The same results were obtained with the group with three auto-transplanted kidneys (Figure 5) and one homo-transplanted kidney studied within 2 hours of operation.

When rejection commenced in dog 37, analysis of the curve showed that component I had decreased from 70 to 61% of total renal blood flow and the percentage of kidney mass supplied by component I had decreased from 66.6 to 47.0%.

The radioautograph of the kidney at that time showed that the cortex contained component I, but some small areas of cortex also flowed at a slower rate (Figure 6). This finding confirmed the diminution in percentage of kidney mass supplied by component I. Figures 7 A and B show the radioautographs of two kidney slices from dog 35. Component I was decreased to 18% of total renal blood flow and perfused 5.0% of kidney volume. The cortex still contained component I, but areas of cortex flowing at a slower rate had increased in prominence. Figures 8 A, B, C, and D show the radioautographs of four slices from the kidney of dog 36. Component I had decreased to 17% of the total renal blood flow supplying only 4.8% of kidney mass. Radioautography did not locate the small mass of tissue supplied by this component. Exposure of the tissue slices was prolonged, and the fastest component to be demonstrated supplied the outer medulla. The cortex contained less concentration of radioactivity than the outer medulla and was therefore supplied by a slower blood flow. Figures 9 A, B, and C are the radioautographs from three slices of the kidney of dog 33. Components I and II were indistinguishable in the curve. The fastest flowing component on the radioautograph was predominantly in the outer medulla, with small areas of cortex supplied at the

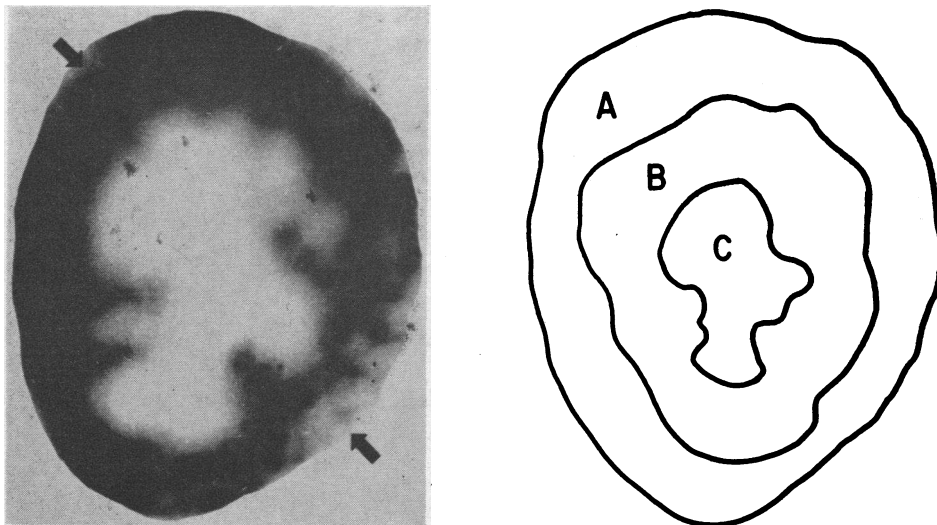


FIG. 6. RADIOAUTOGRAPH OF SLICE FROM THE UNTREATED REJECTING HOMOTRANSPLANTED KIDNEY OF DOG 37. Areas of cortex indicated by the arrows were not perfused by component I. The washout curve had shown that the percentage of total renal blood flow received by component I had decreased to 61% and the percentage mass of kidney perfused by component I had decreased to 47%.

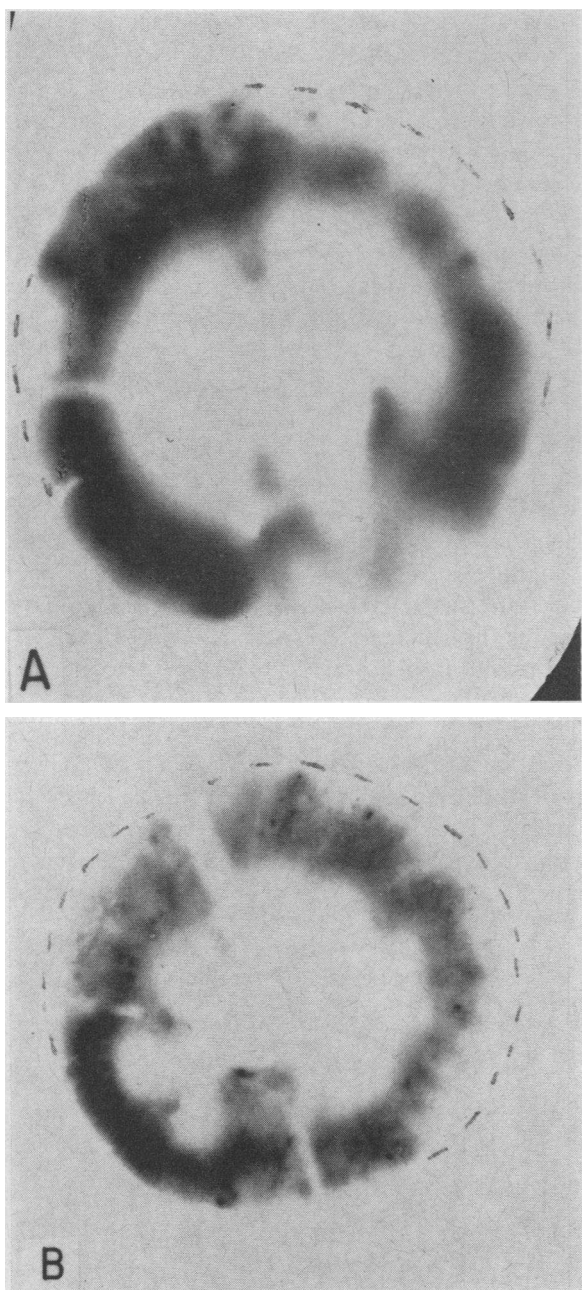


FIG. 7A & B. RADIOAUTOGRAPHS FROM HOMOTRANSPLANTED KIDNEY OF DOG 35. Large areas of cortex were not perfused by component I. External boundary of slice is defined by drawn interrupted line.

same rate. The concentration of radioactivity in the remainder of the cortex was less than that in the outer medulla. The majority of the cortex, therefore, received a slower flow than the outer medulla.

Discussion

The group of dogs with normal kidneys showed significantly different results for intrarenal distribution of blood flow when studied in the early and late periods after laparotomy for insertion of the catheter. After the arbitrary time intervals of 7 days after operation, the intrarenal distribution of blood flow remained stable. Observations made before the seventh postoperative day showed a decreased percentage of renal blood flow supplied to the fastest flowing component, but the flow rate per 100 g tissue supplied by this component was not significantly different. These data signified a decrease in the mass of tissue perfused by component I. This conclusion is consistent with that of Carriere, Thorburn, O'Morchoe, and Barger (12). They demonstrated by radioautography that focal areas of cortex in the normal kidney may respond to trauma and hemorrhage by adopting the flow characteristics of component II.

These results demonstrated that the intrarenal circulations of the autotransplanted and normal kidneys behaved differently in response to certain stimuli when the measurements were made during anesthesia. Manipulation during laparotomy caused the normal kidney to redistribute its blood flow, whereas the distribution of blood flow in the autotransplanted kidney remained stable. This difference could be determined by denervation of the transplanted kidney. It has been shown that the kidney has afferent nerve fibers and the intrarenal vasculature is supplied by efferent sympathetic nerves (17). The preferential cortical ischemia may be associated with the richer innervation of the cortical vasculature (17). An alternative explanation could be that the period of ischemia during transplantation made the cortical vasculature unresponsive to manipulation. However, the evidence of Defalco and co-workers makes this explanation improbable (18).

The group of 12 dogs with first-set homotransplanted kidneys were subjected to ischemia for as long as 45 minutes. Within 2 hours of re-establishment of the renal circulation, the distribution of blood flow and blood flow per 100 g tissue in each component were not significantly different from those in the autotransplanted kidneys studied for as long as 77 days. Moreover, radioautographs of these kidneys did not demonstrate any

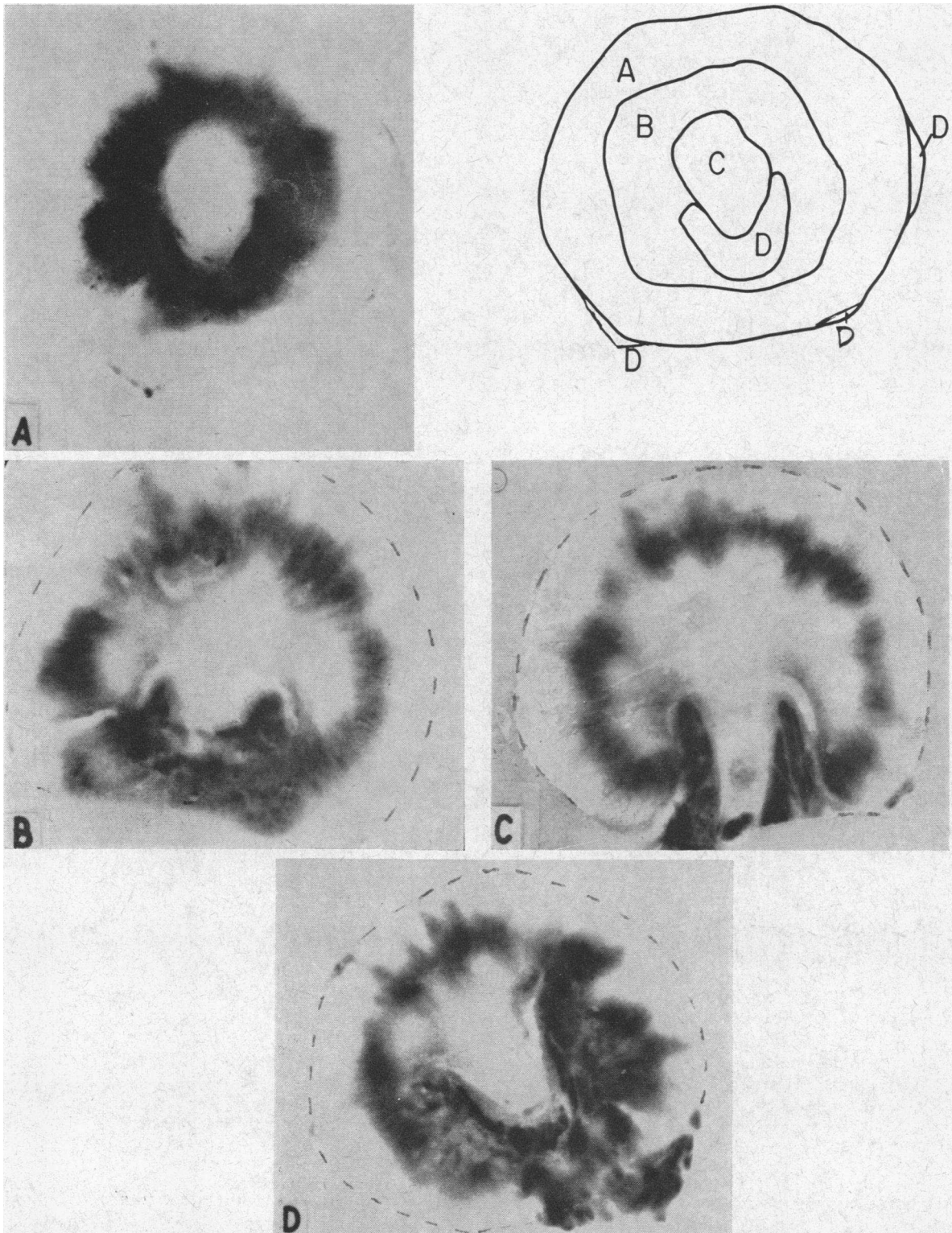


FIG. 8. A = RADIOAUTOGRAPH OF A SLICE OF THE HOMOTRANSPLANTED KIDNEY OF DOG 36. External boundary of slice was drawn. Anatomical boundaries are shown alongside. A = cortex, B = outer medulla, C = inner medulla, D = fat. Fastest component of renal blood flow perfused outer medulla and adjacent areas of cortex.

B, C, & D = RADIOAUTOGRAPHS OF OTHER SLICES OF THE SAME KIDNEY FROM DOG 36.

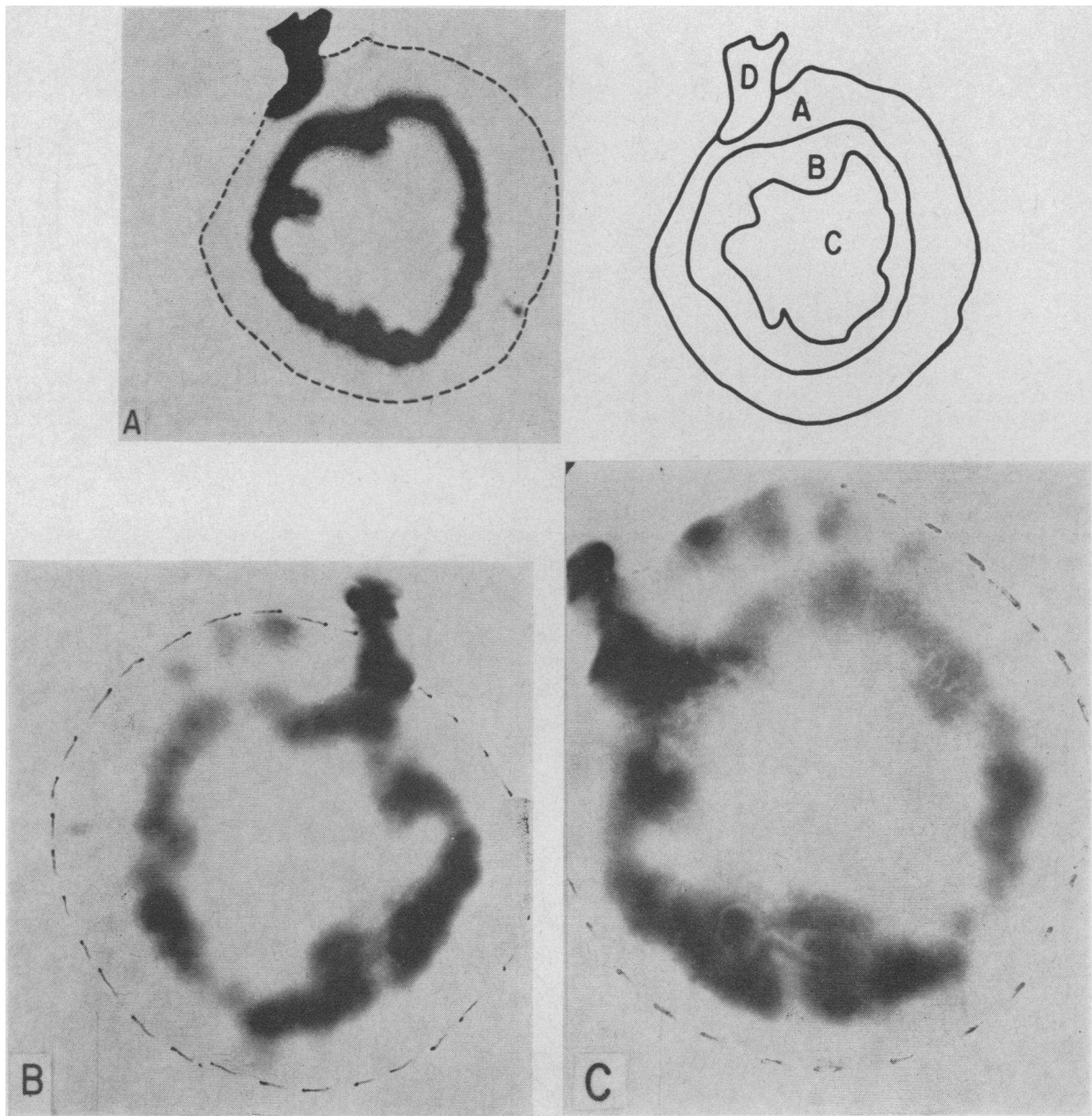


FIG. 9. A = RADIOAUTOGRAPH OF A KIDNEY SLICE FROM THE REJECTING KIDNEY OF DOG 33. External boundary was drawn. Anatomical boundaries of this slice are shown alongside. A = cortex, B = outer medulla, C = inner medulla, D = renal fat. Fastest flowing component of renal blood flow perfused outer medulla. Component I could not be distinguished from component II on the washout curve.

B & C = RADIOAUTOGRAPHS FROM OTHER SLICES OF THE KIDNEY OF DOG 33. Small areas of cortex supplied at approximately the same rate of blood flow as outer medulla were demonstrated.

heterogeneity of cortical perfusion, indicating that the total renal blood flow had assumed a stable value within 2 hours after homotransplantation. Other investigators (3, 5, 19, 20) have had re-

sults that indicated a reduction of total renal blood flow within the first day after homotransplantation. However, they did not state the time interval that had elapsed between re-establishment

of the circulation and their measurements, or the depth of anesthesia.

Cortical ischemia has previously been suggested to be associated with rejection of the homotransplanted kidney. Dempster (1, 19, 21) injected pyelosil into the artery of the homotransplanted kidney after it had ceased to produce urine. He noted that very little of the dye entered the cortex, whereas in the autotransplanted kidney there was an even distribution of pyelosil throughout the cortex. Simonsen and associates (2) and Egdahl and Hume (22) reported that the cut surface of the anuric rejected homotransplanted kidney bled less than the normal kidney and suggested that anuria of rejection was accompanied by cortical ischemia.

Our studies have allowed serial measurements of intrarenal distribution of blood flow, and results have been obtained on a quantitative basis. The distribution of blood flow in the autotransplanted kidney when measured in dogs under pentobarbital anesthesia remained stable from the time of operation for periods as long as 77 days. The distribution in the homotransplanted kidney within 2 hours of operation was indistinguishable from that in the autotransplanted kidney. However, when rejection appeared, a progressively smaller percentage of total renal blood flow was supplied to the fastest flowing component. Radioautography demonstrated that this component occupied the cortex in the healthy normal and transplanted kidneys. When rejection occurred in the homotransplanted kidney, the fastest flowing component perfused a smaller volume of cortical tissue and eventually moved to the outer medulla. The latter observation demonstrated that in abnormal circumstances the fastest flowing component is not necessarily limited to the cortex.

The importance of measuring both the blood flow rate to a component (k) and the percentage of total renal blood flow supplied to that component (A_0) has been demonstrated, since these two parameters have been shown to vary independently of each other. The blood flow rate in component I fluctuated markedly as rejection progressed, but the percentage of total renal blood flow supplied to this component consistently decreased. These results were explained by postulating that heterogeneity of blood flow rate occurred in the cortex during rejection. This explanation was confirmed by radioautography. The correlation between the

predicted mass of tissue supplied by component I and the mass determined by radioautography is further evidence of the validity of measuring the intrarenal distribution of blood flow by the inert gas washout technique.

The mechanism of the vascular changes during rejection is open to speculation. One concept maintains that these changes result from compression due to interstitial edema and cellular infiltration. Under these circumstances, the pressure might be evenly distributed throughout the kidney and the blood would take the shortest pathway through the kidney. It would then pass through the areas of cortex closest to the arcuate arteries, leaving the more superficial cortex ischemic. The ischemia would consequently progress concentrically from the surface of the cortex. However, our radioautographic evidence does not show a concentric advance of the ischemia and, therefore, does not support this concept.

Another mechanism may involve the damage of vessels by immunologically stimulated cells. Kountz and coworkers (3) have suggested blockage and damage of cortical vessels by collection of lymphocytes and pyroninophilic cells in the peritubular capillaries and venules. Porter and co-workers (23) confirmed their findings and postulated that these products of cellular reaction would occur predominantly where the circulation is most sluggish. However, there is no evidence that the circulation of the cortical peritubular capillaries is more sluggish than that in the peritubular capillaries of the outer medulla.

A third concept maintains that the vascular reaction may be humoral in origin, due to circulating antibodies or diffusion of substances produced locally in the kidney. The general subject of circulating antibodies found in homograft recipients has been well reviewed (24-29). The importance of the vascular system as an end organ for immunological damage has been presented by Horowitz and his associates (30). They produced evidence which suggested that antigen-antibody complexes appear in the arteries and arterioles of the transplant during rejection.

The early diagnosis of rejection of a homotransplanted kidney remains a problem. Pyrexia associated with rejection may be confused with local or systemic infection. Oliguria may be due to leakage or obstruction in the urinary outflow

tract. An increase in immunosuppressive therapy would be detrimental if infection or urine leakage were present. Redistribution of renal blood flow occurred early during the course of rejection and could be used as an early diagnostic test. However, it is not pathognomonic for rejection since it has been noted under other circumstances. It occurred in three autotransplanted kidneys not reported in this series. Two of these kidneys had renal arterial thrombosis and one had renal venous thrombosis. Redistribution has also been shown to occur in normal and transplanted kidneys during severe hemorrhagic hypotension (12, 31, 32), but these circumstances can be readily distinguished from rejection with other criteria.

Acknowledgments

We wish to express our thanks to A. Clifford Barger and J. Alan Herd and their associates for their interest and valuable discussion.

References

- Dempster, W. J. Kidney homotransplantation. *Brit. J. Surg.* 1953, **40**, 447.
- Simonsen, M., J. Buemann, A. Gammeltoft, F. Jensen, and K. Jørgensen. Biological incompatibility in kidney transplantation in dogs. I. Experimental and morphological investigations. *Acta path. microbiol. scand.* 1953, **32**, 1.
- Kountz, S. L., M. A. Williams, P. L. Williams, G. Kapros, and W. J. Dempster. Mechanism of rejection of homotransplanted kidneys. *Nature (Lond.)* 1963, **199**, 257.
- Jackson, B. T., and J. A. Mannick. Serial blood flow in first set renal homotransplants undergoing rejection. *Surg. Gynec. Obstet.* 1964, **119**, 1265.
- Jones, H. B. *Respiratory System: Nitrogen Elimination in Medical Physics*, vol. 2, O. Glasser, Ed. Chicago, Year Book, 1950, pp. 855-871.
- Thorburn, G. D., H. H. Kopald, J. A. Herd, M. Hollenberg, C. C. C. O'Morchoe, and A. C. Barger. Intrarenal distribution of nutrient blood flow determined with krypton⁸⁵ in the unanesthetized dog. *Circulat. Res.* 1963, **13**, 290.
- Dobson, E. L., and G. F. Warner. Measurement of regional sodium turnover rates and their application to the estimation of regional blood flow. *Amer. J. Physiol.* 1957, **189**, 269.
- Defares, J. G., and I. N. Sneddon. *An Introduction to the Mathematics of Medicine and Biology*. Chicago, Year Book, 1960, pp. 582-590.
- Kety, S. S. The theory and applications of the exchange of inert gas at the lungs and tissues. *Pharmacol. Rev.* 1951, **3**, 1.
- Conn, H. L., Jr. Equilibrium distribution of radio-xenon in tissue; xenon-haemoglobin association curve. *J. appl. Physiol.* 1961, **16**, 1065.
- Ladefoged, J., F. Pederson, U. Doutheil, P. Deetjen, and E. E. Selkurt. Renal blood flow measured with xenon¹³³ wash-out technique and with an electromagnetic flowmeter. *Pflügers Arch. ges. Physiol.* 1965, **284**, 195.
- Carriere, S., G. D. Thorburn, C. C. C. O'Morchoe, and A. C. Barger. Intrarenal distribution of blood flow in dogs during hemorrhagic hypotension. *Circulat. Res.* 1966, **19**, 167.
- Rosen, S. M., N. K. Hollenberg, and A. B. Retick. Measurement of compartmental distribution of blood flow and total blood flow in homotransplanted dog kidney using Xe¹³³ washout techniques and electromagnetic flowmeter. In preparation.
- Herd, J. A., and A. C. Barger. Simplified technique for chronic catheterization of blood vessels. *J. appl. Physiol.* 1964, **19**, 791.
- Chidsey, C. A. III, H. W. Fritts, Jr., A. Hardewig, D. W. Richards, and A. Courmand. Fate of radioactive krypton (Kr⁸⁵) introduced intravenously in man. *J. appl. Physiol.* 1959, **14**, 63.
- Ueda, K., P. R. Lichtlen, J. R. Rees, R. S. Ross, and M. Iio. Coronary blood flow measurement in dog and man using Kr⁸⁵ or Xe¹³³ (abstract). *Fed. Proc.* 1963, **22**, 641.
- Mitchell, G. A. G. The intrinsic renal nerves. *Acta anat. (Basel)* 1951, **13**, 1.
- Defalco, A. J., E. D. Mundth, L. Brettschneider, Y. G. Jacobson, and J. E. McClenathan. A possible explanation for transplantation anuria. *Surg. Gynec. Obstet.* 1965, **120**, 748.
- Dempster, W. J. The anurias following kidney transplantation. *Acta med. scand.* 1954, **148**, 91.
- Mims, M. M. Hemodynamics of renal transplantation. *J. Urol. (Baltimore)* 1961, **86**, 493.
- Dempster, W. J. A consideration of the cause of functional arrest of homotransplanted kidneys. *Brit. J. Urol.* 1955, **27**, 66.
- Egdahl, R. H., and D. M. Hume. Immunologic studies in renal homotransplantation. *Surg. Gynec. Obstet.* 1956, **102**, 450.
- Porter, K. A., N. H. Joseph, J. M. Rendall, C. Stolinski, R. J. Hoehn, and R. Y. Calne. The role of lymphocytes in the rejection of canine renal homotransplants. *Lab. Invest.* 1964, **13**, 1080.
- Merrill, J. P., C. Hanau, and M. D. Hawes. A demonstration of a cytotoxic effect *in vitro* following the rejection of skin grafts by the rabbit. *Ann. N. Y. Acad. Sci.* 1960, **87**, 266.
- Medawar, P. B. Reactions to homologous tissue antigens in relation to hypersensitivity *in Cellular and Humoral Aspects of the Hypersensitive States*, H. Sherwood Lawrence, Ed. New York, Hoeber, 1959, pp. 504-529.
- Stetson, C. A., and E. Jensen. Humoral aspects of the immune response to homografts. *Ann. N. Y. Acad. Sci.* 1960, **87**, 249.

27. Medawar, P. B. The immunology of transplantation. Harvey Lect. 1956-57, 52, 144.
28. Lawrence, H. S. Homograft sensitivity. An expression of the immunologic origins and consequences of individuality. *Physiol. Rev.* 1959, 39, 811.
29. May, J., L. W. Way, and J. S. Najarian. Onset, duration, and mechanism of antigen release from the homotransplanted kidney. *Surg. Forum* 1965, 16, 250.
30. Horowitz, R. E., L. Burrows, F. Paronetto, D. Dreiling, and A. E. Kark. Immunologic observations on homografts. II. The canine kidney. *Transplantation* 1965, 3, 318.
31. Rosen, S. M., B. Truniger, H. R. Kriek, D. E. Oken, J. E. Murray, and J. P. Merrill. Intrarenal distribution of blood flow in normal and autotransplanted dog kidneys. Effect of hemorrhagic hypotension and mannitol (abstract). *J. clin. Invest.* 1965, 44, 1092.
32. Rosen, S. M., B. Truniger, H. R. Kriek, D. E. Oken, J. E. Murray, and J. P. Merrill. Regional distribution of blood flow in the denervated kidney during hemorrhagic hypotension (abstract). *Clin. Res.* 1965, 13, 558.