

Supplemental Table 1. Histologic score of inflammatory infiltrates

Pathology Score	0	1	2	3	4
Mononuclear Infiltration in Glands	-	-	+	++	+++
Mononuclear Infiltration in Stroma	-	+	any	any	+++

“-”, no infiltration; “+”, rare scattered inflammatory cells; “++”, obvious scattered cells without confluence; “+++”, confluent sheets of cells and / or epithelial injury by inflammatory cells (replacing or destroying mucosal cells).

Supplemental Figure 1. Aire-deficient male mice possess prostate-specific autoantibodies. (A)

Immunoblotting of prostate, eye, lacrimal, and salivary gland extracts were performed with the sera from male Aire-KO and WT mice on the B6/NOD F2 background (individual mice listed by number). Each lane of the multi-screen immunoblot represents the reactivity of sera from individual mice. (B) Immunoprecipitation of autoantigens was performed using protein G agarose coupled to Aire-sufficient or Aire-KO sera to pull-down proteins contained with prostate extracts. Proteins eluted off the agarose beads were then separated by gel electrophoresis. Unique bands immunoprecipitated (bands A, B, C, C2, D, E, F) by Aire-KO sera were excised and submitted for PMF. Bands C2 and D identified SVS2. Band C identified human keratin 9. Band E identified gamma-actin. The other bands returned “no significant hits.”

Prostate

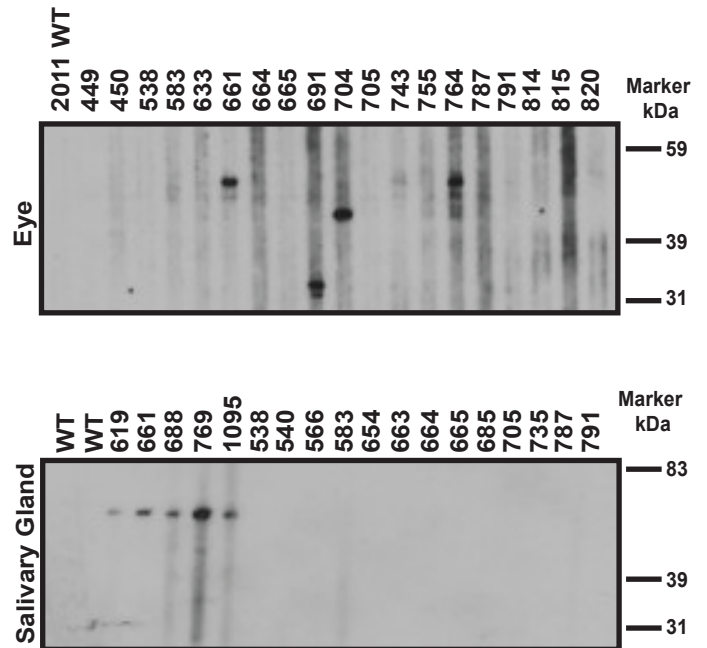
2011 WT
2251 WT
540
541
560
583
619
654
663
664
665
704
705
755
787
791
820
870
1013
secondary

Marker
kDa
83
39
31

Lacrimal Gland

WT
WT
540
560
583
619
633
654
661
663
664
665.1
665.2
685
688
691
704
705
secondary

Marker
kDa
83
39
31



Ladder 1

Ladder 2

Aire-KO

WT

100
75
50
37
25
20
15

I
H
G
F
E
D
C
C2
B
A