



bone marrow-derived stem cells may be beneficial in ALI since pulmonary microvasculature would be the first capillary bed encountered and thus entrap stem cells that may help to regenerate pulmonary endothelium after injury. Although considerable work will be required, promotion of endothelial regeneration would be a novel approach to treat ALI.

Address correspondence to: Issei Komuro, Department of Cardiovascular Science and Medicine, Chiba University Graduate School of Medicine, 1-8-1 Inohana, Chuo-ku, Chiba 260-8670, Japan. Phone: 81-43-226-2097; Fax: 81-43-226-2557; E-mail: komuro-tyk@umin.ac.jp.

1. Ware, L.B., and Matthay, M.A. 2000. The acute respiratory distress syndrome. *N. Engl. J. Med.* **342**:1334–1349.
2. [Anonymous]. 2000. Ventilation with lower tidal volumes as compared with traditional tidal volumes for acute lung injury and the acute respiratory distress syndrome. The Acute Respiratory Distress Syndrome Network. *N. Engl. J. Med.* **342**:1301–1308.
3. Anzueto, A., et al. 1996. Aerosolized surfactant in adults with sepsis-induced acute respiratory distress syndrome. Exosurf Acute Respiratory Distress Syndrome Sepsis Study Group. *N. Engl. J. Med.* **334**:1417–1421.
4. Dellinger, R.P., et al. 1998. Effects of inhaled nitric oxide in patients with acute respiratory distress syndrome: results of a randomized phase II trial. Inhaled Nitric Oxide in ARDS Study Group. *Crit. Care Med.* **26**:15–23.
5. Bernard, G.R., et al. 1987. High-dose corticosteroids in patients with the adult respiratory distress syndrome. *N. Engl. J. Med.* **317**:1565–1570.
6. Kaestner, K.H., Knochel, W., and Martinez, D.E. 2000. Unified nomenclature for the winged helix/forkhead transcription factors. *Genes Dev.* **14**:142–146.
7. Costa, R.H., Kalinichenko, V.V., Major, M.L., and Raychaudhuri, P. 2005. New and unexpected: forkhead meets ARF. *Curr. Opin. Genet. Dev.* **15**:42–48.
8. Korver, W., et al. 1998. Uncoupling of S phase and mitosis in cardiomyocytes and hepatocytes lacking the winged-helix transcription factor Tridant. *Curr. Biol.* **8**:1327–1330.
9. Kim, I.M., et al. 2005. The forkhead box m1 transcription factor is essential for embryonic development of pulmonary vasculature. *J. Biol. Chem.* **280**:22278–22286.
10. Ye, H., Holterman, A.X., Yoo, K.W., Franks, R.R., and Costa, R.H. 1999. Premature expression of the winged helix transcription factor HFH-11B in regenerating mouse liver accelerates hepatocyte entry into S phase. *Mol. Cell. Biol.* **19**:8570–8580.
11. Wang, X., Kiyokawa, H., Dennewitz, M.B., and Costa, R.H. 2002. The Forkhead Box m1b transcription factor is essential for hepatocyte DNA replication and mitosis during mouse liver regeneration. *Proc. Natl. Acad. Sci. U. S. A.* **99**:16881–16886.
12. Kalinichenko, V.V., et al. 2004. Foxm1b transcription factor is essential for development of hepatocellular carcinomas and is negatively regulated by the p19ARF tumor suppressor. *Genes Dev.* **18**:830–850.
13. Kalinichenko, V.V., et al. 2003. Ubiquitous expression of the forkhead box M1B transgene accelerates proliferation of distinct pulmonary cell types following lung injury. *J. Biol. Chem.* **278**:37888–37894.
14. Zhao, Y.-Y., et al. 2006. Endothelial cell-restricted disruption of *FoxM1* impairs endothelial repair following LPS-induced vascular injury. *J. Clin. Invest.* **116**:2333–2343. doi:10.1172/JCI27154.
15. Wiener-Kronish, J.P., Albertine, K.H., and Matthay, M.A. 1991. Differential responses of the endothelial and epithelial barriers of the lung in sheep to *Escherichia coli* endotoxin. *J. Clin. Invest.* **88**:864–875.
16. Wang, X., et al. 2001. Increased levels of forkhead box M1B transcription factor in transgenic mouse hepatocytes prevent age-related proliferation defects in regenerating liver. *Proc. Natl. Acad. Sci. U. S. A.* **98**:11468–11473.
17. Wang, I.C., et al. 2005. Forkhead box M1 regulates the transcriptional network of genes essential for mitotic progression and genes encoding the SCF (Skp2-Cks1) ubiquitin ligase. *Mol. Cell. Biol.* **25**:10875–10894.
18. Minamino, T., et al. 2004. Vascular cell senescence and vascular aging. *J. Mol. Cell. Cardiol.* **36**:175–183.
19. Ware, L.B., and Matthay, M.A. 2002. Keratinocyte and hepatocyte growth factors in the lung: roles in lung development, inflammation, and repair. *Am. J. Physiol. Lung Cell. Mol. Physiol.* **282**:L924–L940.
20. Krause, D.S., et al. 2001. Multi-organ, multi-lineage engraftment by a single bone marrow-derived stem cell. *Cell*. **105**:369–377.

Toll-like receptors and IFN- α : partners in autoimmunity

Marco Colonna

Department of Pathology and Immunology, Washington University School of Medicine, St. Louis, Missouri, USA.

Many autoimmune diseases are thought to be precipitated by viral infections. In this issue of the *JCI*, Lang et al. demonstrate that, in a mouse model of autoimmune hepatitis, viral infections not only trigger expansion of self-reactive T cells but also activate antigen-presenting cells through TLR stimulation (see the related article beginning on page 2456). Activated cells then secrete IFN- α and TNF- α , which trigger tissue release of chemokines that attract self-reactive CD8⁺ T cells, ultimately leading to liver damage.

Autoimmune diseases result from the propagation of T and B cells that recognize self antigens and mediate tissue destruction.

Nonstandard abbreviations used: CXCL9, CXC chemokine ligand 9; GP, glycoprotein₁₋₆₀; gp33, LCMV-glycoprotein peptide₃₃₋₄₁; IFNAR, IFN receptor α ; LCMV, lymphocytic choriomeningitis virus; PKR, double-stranded RNA-dependent protein kinase; poly(I:C), polyinosinic-polycytidylic acid.

Conflict of interest: The author has declared that no conflict of interest exists.

Citation for this article: *J. Clin. Invest.* **116**:2319–2322 (2006). doi:10.1172/JCI29879.

Normally, self-reactive lymphocytes are deleted in central lymphoid organs, the thymus and bone marrow, during development (1). In the periphery, multiple safeguards exist to further prevent activation of self-reactive lymphocytes that have eluded central elimination (2). Thus, autoimmunity is fundamentally due to failure of central and/or peripheral mechanisms of immunological tolerance. Viral infections have long been suspected to instigate or overtly precipitate autoimmunity (3–5). Viral antigens can trigger autoimmune responses by molecular

mimicry of self structures. Virus-mediated tissue destruction may also generate novel tissue-specific antigens to which T cells are not tolerant. Moreover, antiviral immune responses can trigger the release of cytokines that induce bystander activation of autoreactive T cells. In this issue of the *JCI*, Lang et al. demonstrate that viruses can initiate autoimmune damage through yet another mechanism (6). In a mouse model of hepatitis, lymphocytic choriomeningitis virus (LCMV) induced IFN- α secretion through TLR3. In turn, IFN- α triggered secretion of chemokines that attract autoreactive T cells into the liver, thereby causing hepatitis.

To model liver-specific expression of a self-antigen, Lang et al. (6) used transgenic mice that express the LCMV-glycoprotein₁₋₆₀ (LCMV-GP) under the control of the mouse albumin promoter (Alb-1 mice). The LCMV-glycoprotein peptide₃₃₋₄₁ (gp33) is presented

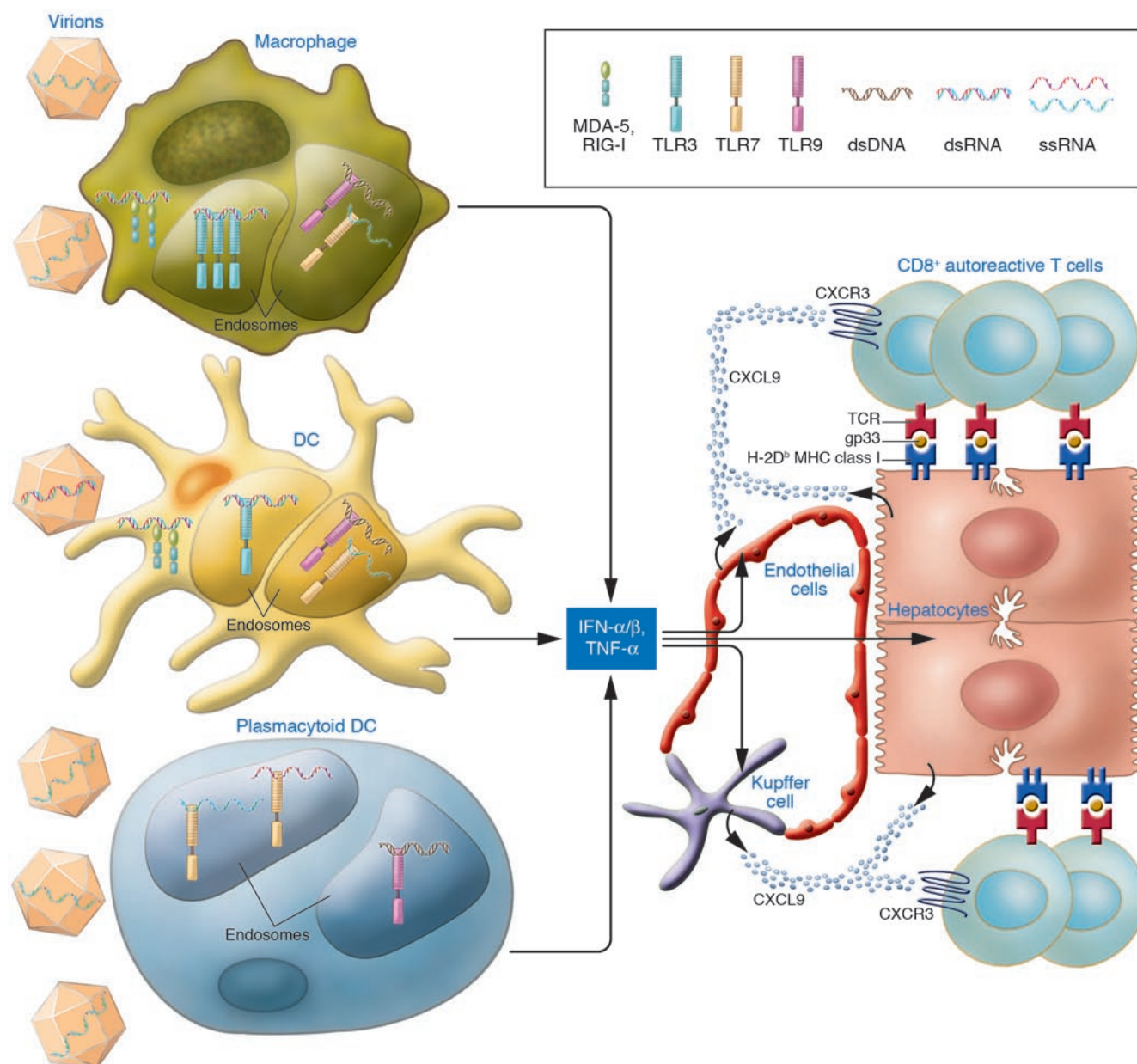


Figure 1

Virus-induced mechanisms of autoimmune hepatitis. In this issue of the *JCI*, Lang et al. (6) demonstrate that LCMV infection precipitates autoimmune hepatitis in a mouse model through activation of TLR3 in antigen-presenting cells, such as macrophages and DCs. Upon activation, cells secrete IFN- α/β and TNF- α , which trigger release of CXCL9 by hepatocytes, Kupffer cells, endothelial cells, and possibly other cells. CXCL9 attracts CXCR3-positive self-reactive CD8⁺ T cells that cause liver damage. As individual viruses can be detected in multiple antigen-presenting cells by different sensors, the figure also illustrates the potential involvement of other antigen-presenting cells, such as plasmacytoid DCs, and other viral sensors, such as TLR7, TLR9, and the RNA helicases melanoma differentiation-associated protein 5 (MDA-5) and retinoic acid-inducible gene I (RIG-I) in triggering autoimmunity. dsRNA, double-stranded RNA; ssRNA, single-stranded RNA.

to CD8⁺ T cells by H-2D^b MHC class I molecules. Because the albumin promoter drives LCMV-GP expression in hepatocytes, but not in the thymus, gp33-specific CD8⁺ T cells are not subjected to central deletion and are present in the periphery. Infection of Alb-1 mice with live LCMV caused expansion and activation of T cells specific for the

viral/self LCMV-GP antigen, resulting in hepatitis. Immunization of Alb-1 mice with gp33 peptide, however, induced expansion of autoreactive T cells but did not result in liver damage. Similarly, transfusion of gp33-specific transgenic CD8⁺ T cells into Alb-1 mice with or without administration of gp33 did not elicit hepatitis. Thus, expansion of

autoreactive T cells is necessary, but not sufficient, to induce hepatitis in this model.

Autoimmunity is induced by a cascade of cytokines and chemokines triggered by TLR3

Lang et al. (6) went on to identify the signal that promotes liver damage by autore-



active T cells during a viral infection. It is known that viruses elicit cytokine responses through several TLRs, including TLR3, TLR7, and TLR9 (7). TLRs trigger secretion of type I IFNs, i.e., IFN- α and IFN- β , as well as proinflammatory cytokines such as TNF- α . By testing these candidates, Lang et al. found that hepatitis was triggered when gp33 was administered along with a TLR3 agonist, polyinosinic-polycytidylic acid [poly(I:C)]. A TLR9 agonist, CpG, was only weakly effective. Despite its ability to trigger autoimmunity, poly(I:C) did not appear to directly activate self-reactive CD8⁺ T cells, as indicated by assessment of activation markers and effector functions. In fact, poly(I:C) predominantly acted on the liver, where it induced remarkably high secretion of CXC chemokine ligand 9 (CXCL9). The liver CXCL9 response to poly(I:C) required bone marrow-derived cells, as no CXCL9 induction was observed in irradiated TLR3^{-/-} bone marrow cells. Moreover, CXCL9 induction was secondary to poly(I:C)-induced secretion of IFN- α and TNF- α , as no CXCL9 induction was observed in IFN receptor α -deficient (IFNAR^{-/-}) and TNF receptor 1-deficient (TNFR1^{-/-}) mice.

CXCL9 is an effective chemoattractant for T cells expressing the receptor CXCR3, including antigen-primed CD8⁺ T cells (8). Indeed, when primed gp33-specific transgenic CD8⁺ T cells were transferred into Alb-1 mice, the majority migrated into the liver following administration of poly(I:C), resulting in notable liver damage (6). T cell migration was reduced in Alb-1/IFNAR^{-/-} mice as well as following treatment with pertussis toxin, which blocks chemokine receptors. In summary, these results demonstrate that viral infection can precipitate autoimmunity by provoking TLR3-mediated secretion of IFN- α and TNF- α from macrophages, DCs, or other bone marrow-derived cells. In turn, IFN- α and TNF- α induce secretion of CXCL9 by hepatocytes and other cells, which attract self-reactive T cells into the liver, where they cause the damage associated with hepatitis (Figure 1).

IFN- α promotes autoimmunity: multiple mechanisms contribute to the general paradigm

The study by Lang et al. (6) indicates that virally-induced autoimmunity requires 2 steps: expansion of self-reactive T cells and TLR triggering in antigen-presenting cells.

A role for TLR triggering in autoimmune diseases has recently been confirmed in other models. Poly(I:C) stimulation of TLR3 promotes diabetes in some mouse models (9, 10), although results appear to vary in the diabetes-prone BB rat and the NOD mouse model (11, 12). Similarly, TLR9 stimulation by DNA-anti-DNA immune complexes contributes to the activation of autoreactive B cells (13). That IFN- α promotes autoimmunity is consistent with the detection of an IFN- α signature in the transcriptome of blood leukocytes from SLE patients, along with their elevated IFN- α serum levels (14, 15). Moreover, therapeutic administration of IFN- α can induce SLE-like symptoms (16), and blockade of IFN- α/β signaling prevents autoimmunity in several animal models (9, 10, 17, 18).

Lang et al. (6) demonstrate that IFN- α acts by inducing CXCL9, which serves as a chemoattractant for autoimmune T cells into the liver. This is consistent with a previous study showing that CXCR3, the receptor for CXCL9, is required for a T cell-mediated attack of pancreatic β cells in a mouse model of diabetes (19). However, IFN- α also has other effects that can contribute to autoimmunity: it induces expression of MHC class I on tissues, thereby increasing susceptibility to CD8⁺ T cell attack (9) and also enhances CD8⁺ T cell cytolytic capacity. The IFN- α -induced upregulation of CD69 on CD8⁺ T cells observed by Lang et al. may promote their retention in lymph nodes (20), prolonging T cell interaction with antigen-presenting cells and enhancing T cell priming. IFN- α also facilitates T cell priming by promoting presentation of exogenous antigens through MHC class I (21).

Potential roles for cytosolic sensors of RNA and plasmacytoid DCs in autoimmunity

While the study by Lang et al. (6) establishes a clear role for TLR-mediated activation of macrophages, DCs, and IFN- α secretion, additional molecules and cells are likely to serve as viral triggers of autoimmunity. In addition to TLRs, cells rely on cytosolic double-stranded RNA-dependent protein kinase (PKR) and RNA helicases to detect RNA viruses and poly(I:C). PKR can elicit apoptosis of pancreatic β cells (22). RNA helicases, which include retinoic acid-inducible gene I (RIG-I) and melanoma differentiation-associated protein 5 (MDA-5), elicit secretion of IFN- α and

proinflammatory cytokines, but each specifically detects only certain viruses (23, 24). Thus, in humans and relevant mouse models, distinct viruses may precipitate autoimmune diseases by triggering PKR or RNA helicases rather than TLRs (Figure 1). Consistent with this, a recent study has shown significant association of human type 1 diabetes with a polymorphism of MDA-5, suggesting that genetic predisposition to diabetes may result from an altered capacity to detect viruses and/or elicit IFN- α responses (25). While the study by Lang et al. (6) clearly suggests a major role for macrophages and DCs in IFN- α responses to viruses, other antigen-presenting cells may also contribute to IFN- α responses and autoimmunity (Figure 1). Indeed, plasmacytoid DCs, which specialize in the secretion of IFN- α in response to viruses, abundantly infiltrate skin lesions in SLE (26, 27).

Collectively, these studies underscore the importance of viruses in inciting self reactivity. Because individual viruses are detected in antigen-presenting cells by unique sensors, a full understanding of the role of viruses in human autoimmune diseases awaits the identification of these novel pathways and the viruses responsible for triggering them.

Address correspondence to: Marco Colonna, Washington University, School of Medicine, Department of Pathology and Immunology, Box 8118, 660 South Euclid Avenue, St. Louis, Missouri 63110, USA. Phone: (314) 362-0367; Fax: (314) 362-4096; E-mail: mcolonna@pathology.wustl.edu.

1. Mathis, D., and Benoist, C. 2004. Back to central tolerance. *Immunity*. **20**:509–516.
2. Abbas, A.K., Lohr, J., Knoechel, B., and Nagabhushanam, V. 2004. T cell tolerance and autoimmunity. *Autoimmun. Rev.* **3**:471–475.
3. Fujinami, R.S., von Herrath, M.G., Christen, U., and Whitton, J.L. 2006. Molecular mimicry, bystander activation, or viral persistence: infections and autoimmune disease. *Clin. Microbiol. Rev.* **19**:80–94.
4. Horwitz, M.S., and Sarvetnick, N. 1999. Viruses, host responses, and autoimmunity. *Immunol. Rev.* **169**:241–253.
5. Von Herrath, M.G., Holz, A., Homann, D., and Oldstone, M.B. 1998. Role of viruses in type I diabetes. *Semin. Immunol.* **10**:87–100.
6. Lang, K.S., et al. 2006. Immunoprivileged status of the liver is controlled by Toll-like receptor 3 signaling. *J. Clin. Invest.* **116**:2456–2463. doi:10.1172/JCI28349.
7. Iwasaki, A., and Medzhitov, R. 2004. Toll-like receptor control of the adaptive immune responses. *Nat. Immunol.* **5**:987–995.
8. Loetscher, M., et al. 1996. Chemokine receptor specific for IP10 and mig: structure, function, and expression in activated T-lymphocytes. *J. Exp. Med.* **184**:963–969.
9. Lang, K.S., et al. 2005. Toll-like receptor engagement



- converts T-cell autoreactivity into overt autoimmune disease. *Nat. Med.* **11**:138–145.
10. Devendra, D., et al. 2005. Interferon-alpha as a mediator of polyinosinic:polycytidylic acid-induced type 1 diabetes. *Diabetes*. **54**:2549–2556.
 11. Sobel, D.O., et al. 1998. Low dose poly I:C prevents diabetes in the diabetes prone BB rat. *J. Autoimmun.* **11**:343–352.
 12. Sobel, D.O., and Ahvazi, B. 1998. Alpha-interferon inhibits the development of diabetes in NOD mice. *Diabetes*. **47**:1867–1872.
 13. Rifkin, I.R., Leadbetter, E.A., Busconi, L., Viglianti, G., and Marshak-Rothstein, A. 2005. Toll-like receptors, endogenous ligands, and systemic autoimmune disease. *Immunol. Rev.* **204**:27–42.
 14. Bennett, L., et al. 2003. Interferon and granulopoiesis signatures in systemic lupus erythematosus blood. *J. Exp. Med.* **197**:711–723.
 15. Baechler, E.C., et al. 2003. Interferon-inducible gene expression signature in peripheral blood cells of patients with severe lupus. *Proc. Natl. Acad. Sci. U. S. A.* **100**:2610–2615.
 16. Krause, I., Valesini, G., Scrivo, R., and Shoenfeld, Y. 2003. Autoimmune aspects of cytokine and anticytokine therapies. *Am. J. Med.* **115**:390–397.
 17. Kono, D.H., Baccala, R., and Theofilopoulos, A.N. 2003. Inhibition of lupus by genetic alteration of the interferon-alpha/beta receptor. *Autoimmunity*. **36**:503–510.
 18. Theofilopoulos, A.N., Baccala, R., Beutler, B., and Kono, D.H. 2005. Type I interferons (alpha/beta) in immunity and autoimmunity. *Annu. Rev. Immunol.* **23**:307–336.
 19. Frigerio, S., et al. 2002. Beta cells are responsible for CXCR3-mediated T-cell infiltration in insulinitis. *Nat. Med.* **8**:1414–1420.
 20. Shioh, L.R., et al. 2006. CD69 acts downstream of interferon-alpha/beta to inhibit SIP1 and lymphocyte egress from lymphoid organs. *Nature*. **440**:540–544.
 21. Le Bon, A., et al. 2003. Cross-priming of CD8⁺ T cells stimulated by virus-induced type I interferon. *Nat. Immunol.* **4**:1009–1015.
 22. Scarim, A.L., et al. 2001. Mechanisms of beta-cell death in response to double-stranded (ds) RNA and interferon-gamma: dsRNA-dependent protein kinase apoptosis and nitric oxide-dependent necrosis. *Am. J. Pathol.* **159**:273–283.
 23. Kato, H., et al. 2006. Differential roles of MDA5 and RIG-I helicases in the recognition of RNA viruses. *Nature*. **441**:101–105.
 24. Gitlin, L., et al. 2006. Essential role of mda-5 in type I IFN responses to polyriboinosinic:polyribocytidylic acid and encephalomyocarditis picornavirus. *Proc. Natl. Acad. Sci. U. S. A.* **103**:8459–8464.
 25. Smyth, D.J., et al. 2006. A genome-wide association study of nonsynonymous SNPs identifies a type 1 diabetes locus in the interferon-induced helicase (IFIH1) region. *Nat. Genet.* **38**:617–619.
 26. Ronnblom, L., and Alm, G.V. 2003. Systemic lupus erythematosus and the type I interferon system. *Arthritis Res. Ther.* **5**:68–75.
 27. Jahnsen, F.L., Farkas, L., Lund-Johansen, F., and Brandtzaeg, P. 2002. Involvement of plasmacytoid dendritic cells in human diseases. *Hum. Immunol.* **63**:1201–1205.

Cholesterol precursors and facial clefting

Forbes D. Porter

Heritable Disorders Branch, National Institute of Child Health and Human Development, NIH,
Department of Health and Human Services, Bethesda, Maryland, USA.

Inborn errors of cholesterol synthesis cause human malformation syndromes, including Smith-Lemli-Opitz syndrome, lathosterolosis, desmosterolosis, X-linked dominant chondrodysplasia punctata type 2, and congenital hemidysplasia with ichthyosiform erythroderma and limb defects. Because adequate cholesterol is not transported across the placenta, low cholesterol and elevated sterol precursor levels are present during embryogenesis. It has been debated whether the malformations result from low cholesterol or the buildup of sterol precursors. In this issue of the JCI, Engelking et al. provide evidence that sterol precursor accumulation plays a pivotal role in the genesis of facial malformations (see the related article beginning on page 2356).

Inborn errors of cholesterol synthesis

Smith-Lemli-Opitz syndrome (SLOS; see ref. 1) is due to mutation of the gene coding for 7-dehydrocholesterol reductase (DHCR7). DHCR7 reduces the Δ^7 double bond in 7-dehydrocholesterol (7-DHC) to yield cholesterol in the final step of cholesterol synthesis. Impaired DHCR7 activity causes an accumulation of 7-DHC and cholesterol deficiency. Clinical manifestations of SLOS (Figure 1) are variable, and the phenotypic spectrum is broad. Severely

affected infants have multiple congenital anomalies and devastating neurological impairment. In contrast, mild SLOS combines learning and autistic-like behavioral problems with minor physical anomalies. Typical craniofacial findings include microcephaly; ptosis; a short, upturned nose; and micrognathia. Cleft palate occurs in approximately half of the patients. Limb anomalies include short thumbs, postaxial polydactyly, and 2-3 toe syndactyly. SLOS is a relatively common genetic disorder. The clinical incidence has been estimated to be on the order of 1 in 20,000 to 1 in 60,000. However, the carrier frequency for SLOS mutations suggests an incidence on par with more well-known genetic disorders, such as phenylketonuria (1 in 14,000) and osteogenesis imperfecta (1 in 20,000).

SLOS was identified as a defect of cholesterol synthesis in 1993 (2). Subsequently, 4 additional human malformation syn-

dromes have been shown to be due to impaired cholesterol synthesis (reviewed in ref. 3). These include the “SLOS-like” syndromes desmosterolosis and lathosterolosis, which are due to deficiencies of 3β -hydroxysterol- Δ^24 -reductase and lathosterol Δ^5 -desaturase, respectively. Two skeletal dysplasia syndromes with dermatologic manifestations, X-linked dominant chondrodysplasia punctata type 2 and congenital hemidysplasia with ichthyosiform erythroderma and limb defects, result from deficiency of 3β -hydroxysterol- Δ^8 , Δ^7 -sterol isomerase and NADPH sterol dehydrogenase, respectively. Hydrops-ectopic calcification-moth-eaten dysplasia and some cases of Antley-Bixler syndrome may include a minor impairment of cholesterol synthesis (3). However, the contribution, if any, of impaired cholesterol synthesis to these latter 2 syndromes is not clear.

Cholesterol deficiency and precursor toxicity

Understanding the pathophysiological processes that underlie the developmental defects in SLOS is complicated because cholesterol is important in multiple biological processes. Cholesterol is a structural lipid in cellular membranes and an obligatory biogenic precursor for steroid, oxysterol, and bile acid synthesis, and cholesterol modification of hedgehog morphogenic proteins

Nonstandard abbreviations used: 7-DHC, 7-dehydrocholesterol; DHCR7, 7-dehydrocholesterol reductase; DKO, double-knockout; Ptch, Patched; Shh, Sonic hedgehog; SLOS, Smith-Lemli-Opitz syndrome; Smo, Smoothened.

Conflict of interest: The author has declared that no conflict of interest exists.

Citation for this article: *J. Clin. Invest.* **116**:2322–2325 (2006). doi:10.1172/JCI29872.