

Developmental endothelial locus-1 protects from hypertension-induced cardiovascular remodeling via immunomodulation

Theresa Failer, ... , Vladimir Todorov, Irakli Kopaliani

J Clin Invest. 2024;134(9):e181599. <https://doi.org/10.1172/JCI181599>.

Corrigendum

Original citation: *J Clin Invest.* 2022;132(6):e126155. <https://doi.org/10.1172/JCI126155> Citation for this corrigendum: *J Clin Invest.* 2024;134(9):e181599. <https://doi.org/10.1172/JCI181599> The authors recently became aware of 3 errors in the original publication. In Figure 7H, the Vehicle+Fc flow cytometry panel was incorrect. In Figure 9M, the ANGII+DEL-1-FC panel was incorrect. In Figure 10M, the ANGII+DEL-1-RGE-Fc was incorrect. The correct images, provided from the original source data, are shown below. The authors regret the errors.

Find the latest version:

<https://jci.me/181599/pdf>



Corrigendum

Developmental endothelial locus-1 protects from hypertension-induced cardiovascular remodeling via immunomodulation

Theresa Failer, Michael Amponsah-Offeh, Aleš Neuwirth, Ioannis Kourtzelis, Pallavi Subramanian, Peter Mirtschink, Mirko Peitzsch, Klaus Matschke, Sems M. Tugtekin, Tetsuhiro Kajikawa, Xiaofei Li, Anne Steglich, Florian Gembarde, Annika C. Wegner, Christian Hugo, George Hajishengallis, Triantafyllos Chavakis, Andreas Deussen, Vladimir Todorov, and Irakli Kopaliani

Original citation: *J Clin Invest.* 2022;132(6):e126155. <https://doi.org/10.1172/JCI126155>.

Citation for this corrigendum: *J Clin Invest.* 2024;134(9):e181599. <https://doi.org/10.1172/JCI181599>.

The authors recently became aware of 3 errors in the original publication. In Figure 7H, the Vehicle+Fc flow cytometry panel was incorrect. In Figure 9M, the ANGII+DEL-1-FC panel was incorrect. In Figure 10M, the ANGII+DEL-1-RGE-Fc was incorrect. The correct images, provided from the original source data, are shown below.

The authors regret the errors.

Figure 7H

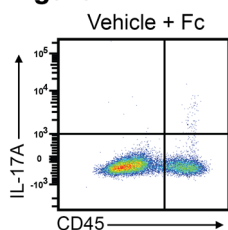


Figure 9M

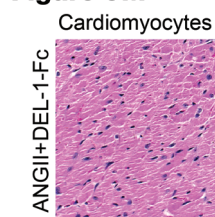


Figure 10M

