

Opposite effects of cyclooxygenase-1 and -2 activity on the pressor response to angiotensin II

Zhonghua Qi, Chuan-Ming Hao, Robert I. Langenbach, Richard M. Breyer, Reyadh Redha, Jason D. Morrow, and Matthew D. Breyer

J. Clin. Invest. **110**:61–69 (2002). doi:10.1172/JCI200214752.

In the final stages of the production process, an error was introduced into Figure 4. The correct version of the figure and the legend appear below.

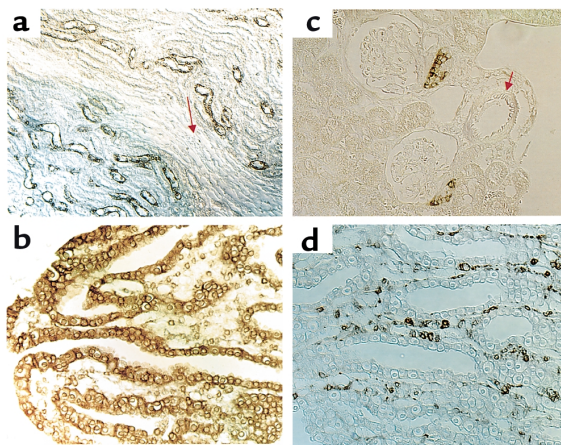


Figure 4
Distribution of COX1 and COX2 in mouse kidney. COX1 immunoreactivity in mouse outer medulla and papilla (**a** and **b**). COX2 immunoreactivity in cortex and medulla, respectively (**c** and **d**). Arrows indicate a vascular bundle in **a** and an intermediate-size arteriole in **c**.