

# Erratum

## The epithelial-to-mesenchymal transition activator ZEB1 initiates a prometastatic competing endogenous RNA network

Xiaochao Tan, Priyam Banerjee, Xin Liu, Jiang Yu, Don L. Gibbons, Ping Wu, Kenneth L. Scott, Lixia Diao, Xiaofeng Zheng, Jing Wang, Ali Jalali, Milind Suraokar, Junya Fujimoto, Carmen Behrens, Xiuping Liu, Chang-gong Liu, Chad J. Creighton, Ignacio I. Wistuba, and Jonathan M. Kurie

Original citation: *J Clin Invest*. 2018;128(4):1267–1282. <https://doi.org/10.1172/JCI97225>.

Citation for this erratum: *J Clin Invest*. 2018;128(7):3198. <https://doi.org/10.1172/JCI122740>.

During the preparation of this manuscript, incorrect labels were inadvertently introduced into Figure 3, B and G, and Figure 5H. The correct figure labels are provided below.

Figure 3B:

The label for the black bars should read 344SQ.

Figure 3G:

The lower band of the PARP blot should read cleaved PARP.

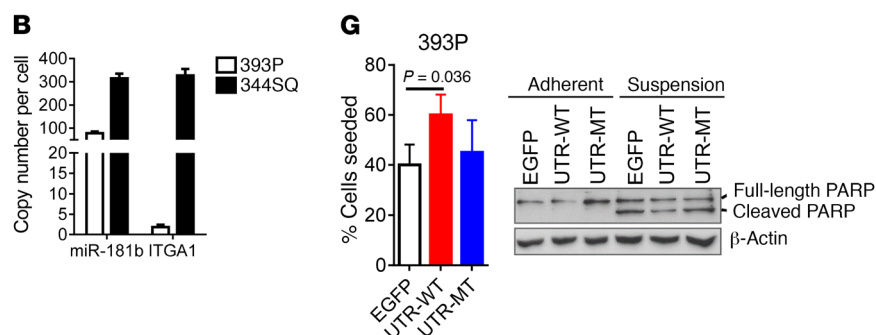
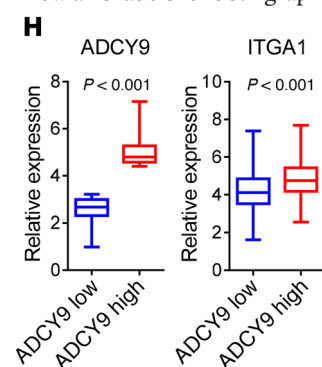


Figure 5H:

The x axis labels for both graphs should be ADCY9 low and ADCY9 high.



The HTML and PDF files have been updated to reflect these changes.

The *JCI* regrets the errors.