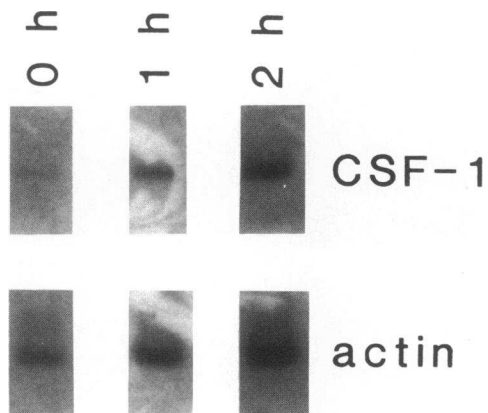


M. L. Sherman, B. L. Weber, R. Datta, and D. W. Kufe.  
*The Journal of Clinical Investigation*, Volume 85, No. 2, February 1990.

Page 443.

Due to a printer's error the bands in Fig. 2 were obliterated. The correctly printed figure appears below.



*Figure 2.* Effects of TNF on rates of CSF-1 gene transcription. HL-60 cell nuclei were isolated at the indicated times as described in Methods. Newly elongated  $^{32}\text{P}$ -labeled RNA transcripts were hybridized to 2  $\mu\text{g}$  CSF-1 or beta-actin DNA insert after restriction enzyme digestion and Southern blotting.